

**Sheila Hogan, Director**

**Children/Families**

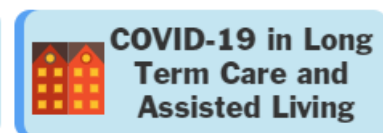
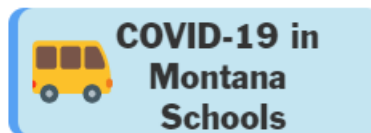
**Disabilities**

**Seniors**

**Health**

[Home](#) » [Public Health & Safety](#) » [Communicable Disease Epidemiology](#) » [Diseases A to Z](#) » [Coronavirus](#) » [Demographics](#)

## Coronavirus Disease 2019 (COVID-19)



### [Archive of Montana COVID-19 Epi Profiles](#)



## Demographic Information for Confirmed Cases

Data for the following tables are updated daily

COVID-19 Cases in Montana	
Total Number of Cases	38,948
- Number of Deaths	445

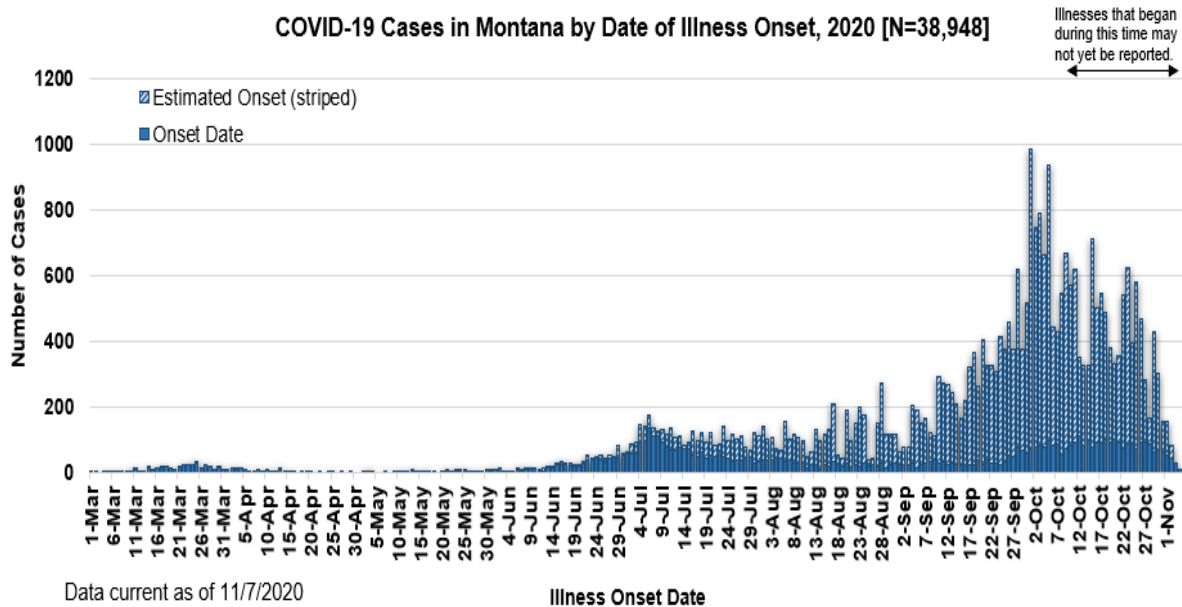
*\* Tables and charts are updated by 10 am every morning.*

County of Residence	Number of Cases	Number of Deaths	Community Transmission*
Beaverhead	332	2	Yes
Big Horn	1,534	40	Yes
Blaine	404	8	
Broadwater	111		

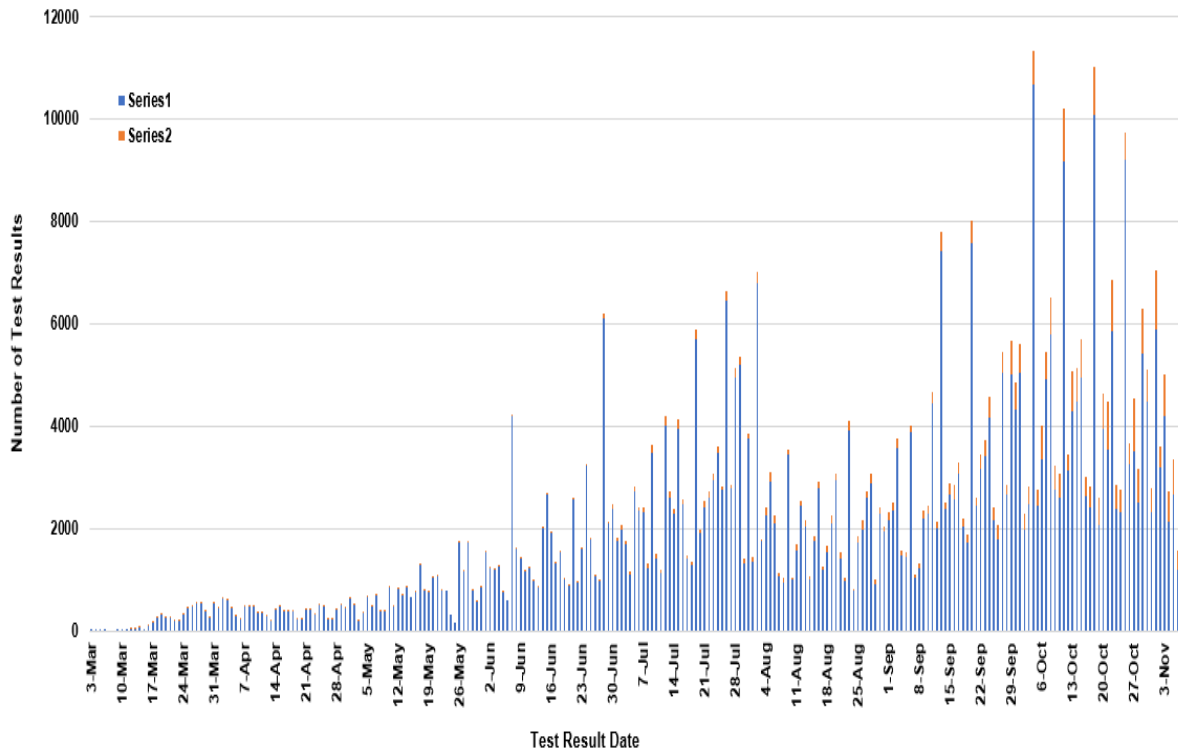
<b>County of Residence</b>	<b>Number of Cases</b>	<b>Number of Deaths</b>	<b>Community Transmission*</b>
Carbon	344	1	
Carter	86	2	
Cascade	2,844	34	Yes
Chouteau	160		
Custer	406	5	Yes
Daniels	57	3	
Dawson	341	7	
Deer Lodge	510	6	
Fallon	110		
Fergus	303	2	
Flathead	4,195	27	Yes
Gallatin	4,282	10	Yes
Garfield	31		
Glacier	1,103	17	Yes
Golden Valley	16		
Granite	83		
Hill	1,014	20	
Jefferson	231		
Judith Basin	21		
Lake	701	7	
Lewis and Clark	1,354	7	Yes
Liberty	40	1	
Lincoln	385	6	Yes
Madison	249	1	Yes
McCone	71		
Meagher	96	5	Yes
Mineral	17		
Missoula	2,873	27	Yes
Musselshell	150	2	
Park	324		
Petroleum	5		
Phillips	212	3	
Pondera	198	1	
Powder River	74	5	
Powell	313	1	
Prairie	36		
Ravalli	660	4	Yes

County of Residence	Number of Cases	Number of Deaths	Community Transmission*
Richland	384	6	
Roosevelt	1,085	31	
Rosebud	891	21	Yes
Sanders	118	2	
Sheridan	132		
Silver Bow	785	10	Yes
Stillwater	278	4	
Sweet Grass	136	2	
Teton	110	1	Yes
Toole	468	8	
Treasure	24	1	
Valley	446	5	
Wheatland	76	3	
Wibaux	47		
Yellowstone	7,688	97	Yes
Total	38,948	445	

\* Community transmission - a community has identified cases who are unable to be linked with other known cases or travel. This status has been determined after consultation between state and local health departments.



SARS-Cov-2 PCR Testing at Montana Public Health Laboratory and Reference Laboratories, Montana 2020 [n=525,176]



View your county's test positivity rate at the [Center for Medicare and Medicaid Services' \(CMS\) webpage](#).

Hospitalization Status	Number of Cases (percent of total)
Ever hospitalized	1,447 (4%)
Not Hospitalized	37,483 (96%)
Total	38,948

Age Group	Number of Cases (percent of total)
0-9 years	1,623 (4%)
10-19 years	4,463 (11%)
20-29 years	7,848 (20%)
30-39 years	6,318 (16%)
40-49 years	5,217 (13%)
50-59 years	5,093 (13%)
60-69 years	4,272 (11%)

Age Group	Number of Cases (percent of total)
70-79 years	2,503 (6%)
80-89 years	1,196 (3%)
90-99 years	390 (1%)
100+	24 (<1%)
Total	38,948

Sex	Number of Cases (percent of total)
Female	20,212 (52%)
Male	18,736 (48%)
Total	38,948

Race and Ethnicity	Number of Cases (percent of total)
White	15,211 (38%)
American Indian, Alaska Native, Native Hawaiian, and Pacific Islander	4,001 (11%)
Asian	75 (<1%)
Black or African American	129 (<1%)
Other Race	1,323 (3%)
Undetermined/Under investigation	18,209 (47%)
Total	38,948
<b>Ethnicity:</b>	
Hispanic/Latino	642 (2%)
Not Hispanic/Latino	15,859 (41%)
Undetermined/Under investigation	22,447 (58%)
Total	38,948

Current Status of Cases	Number of Cases (percent of total)
Hospitalized	446 (1%)
Deceased	445 (1%)
Recovering	14,232 (36%)

Current Status of Cases	Number of Cases (percent of total)
Recovered and released from isolation	23,825 (62%)
Total number of cases	38,948

**Location (at time of testing) of individuals diagnosed but not residing or counted in Montana:**

County	Number of Cases (percent of total)
Beaverhead	3 (1%)
Big Horn	1 (<1%)
Carbon	3 (1%)
Cascade	20 (9%)
Custer	4 (2%)
Dawson	3 (1%)
Deer Lodge	1 (<1%)
Fallon	1 (<1%)
Fergus	2 (1%)
Flathead	46 (19%)
Gallatin	49 (20%)
Glacier	1 (<1%)
Granite	1 (<1%)
Lake	10 (4%)
Lewis and Clark	6 (2%)
Lincoln	3 (1%)
Madison	27 (11%)
Meagher	1 (<1%)
Missoula	17 (7%)
Park	10 (3%)
Powell	1 (<1%)
Ravalli	8 (3%)
Silver Bow	5 (2%)
Stillwater	2 (1%)
Sweet Grass	3 (1%)
Toole	2 (1%)
Yellowstone	20 (9%)
Total	250

*Cases reported in the tables above include 13 residents of other states who were tested, isolated and/or hospitalized in Montana during the early phases of the pandemic. As COVID-19 is now widespread across the United States, data no longer include out-of-state residents who test positive in Montana in order to align with Council of State and Territorial Epidemiologists guidelines that classify cases by the individual's usual state of residence. This is standard practice for all communicable diseases to ensure accurate case reporting for Montana and the US. Additional individuals were diagnosed in Montana but are not included due to residency and/or*

the transient nature of their visit to the state: data for these individuals are reflected in the table immediately above.



## Communicable Disease Epidemiology Staff Listing



To submit a question or comment to the Communicable Disease Epidemiology Program, please click on the suggestion box to access our online form.

 [Diseases A-Z](#)

 [Disease Reporting](#)

 [Data and Reports](#)

 [Contact Us](#)

Other Program Areas

 [Tuberculosis \(TB\)](#)

 [Healthcare Associated Infections \(HAI\)](#)

 [Sexually Transmitted Diseases \(HIV/STD\)](#)

 [Antimicrobial Resistance](#)

 [Follow DPHHS](#)

*The DPHHS CDEpi Section mission is to create, maintain, support, and strengthen routine surveillance and detection systems and epidemiological investigation processes, as well as to expand these systems and processes in response to incidents of public health significance.*

[Nondiscrimination Notice/Policy](#)

[Notice of Use of Protected Health Information](#)

[Disclaimer](#)

[Contact Webmaster](#)

[Language Assistance Available](#)

[Español](#) | [Deutsch](#) | [繁體中文](#) | [日本語](#) | [Tagalog](#) | [Français](#) | [Русский](#) | [한국어](#) | [العربية](#) | [ไทย](#) | [Norsk](#) | [Tiếng Việt](#) | [український](#) | [Pennsilfaanisch Deitsch](#) | [Italiano](#)

