



Navajo Nation Dikos Ntsaaiǵí-19 (COVID-19)



Last Updated: May 7, 2021

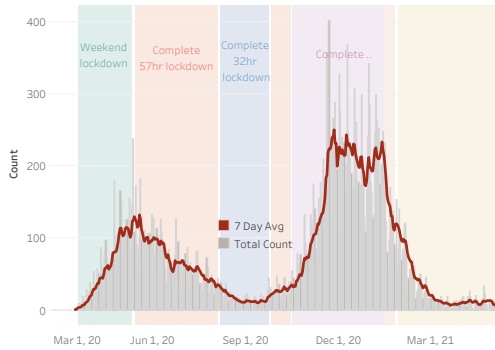
Navajo Nation Residents

Total Confirmed Cases¹ 30,578 New Cases from Last Update: 15	Total Recovered⁴ 29,225	Total Confirmed Deaths 1,283 New Death(s) Reported: 1
Total Tests Completed² 267,483	Total Positive Tests³ 39,024	Total Negative Tests 216,670

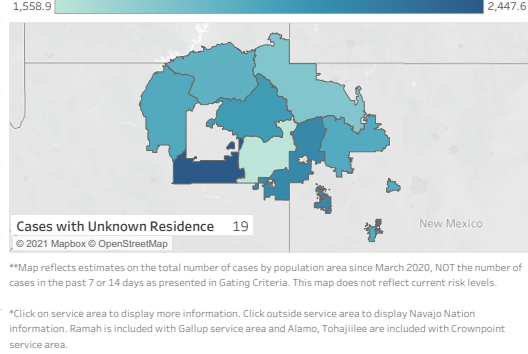
Service Area Confirmed Cases

Bordertown	Chinle	Crownpoint	Fort Defiance	Gallup	Kayenta	Shiprock	Tuba City	Winslow
8,518	5,583	2,940	3,635	4,848	2,716	5,144	3,719	1,974

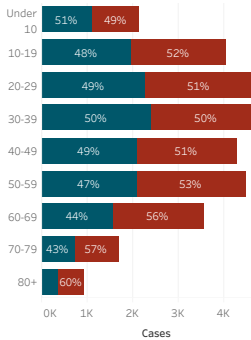
Daily Confirmed Cases on Navajo Nation in All



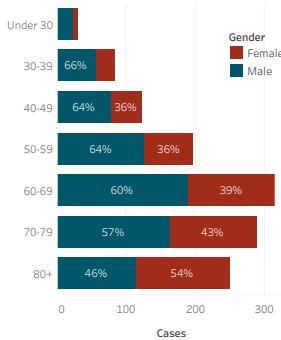
Navajo Nation Service Area Rates per 10,000 population



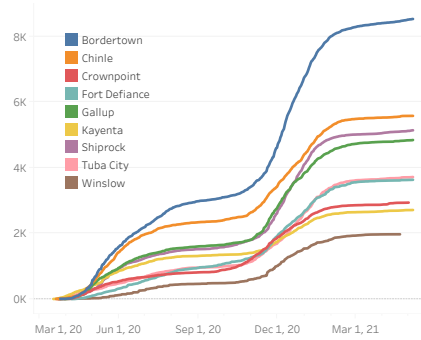
COVID-19 by Age Groups



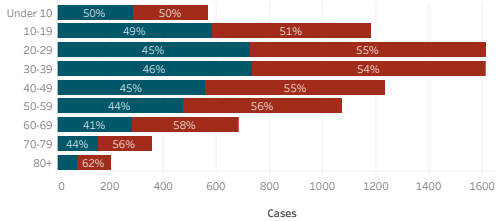
COVID-19 Deaths by Age Groups



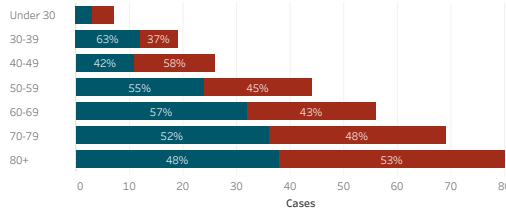
Total Count of Cases since March



Bordertown COVID-19 by Age Groups



Bordertown COVID-19 Deaths by Ages Groups



1. Some Cases are due to delayed reporting
 2. Multiple tests performed on same individuals have been de-duplicated.
 3. Includes bordertown
 4. The recovery number has been revised to improve estimates on the number of cases who survived the initial COVID-19 illness and are no longer contagious.
 Data is updated Monday - Friday

Data reflects cases reported of the previous day.

Data is reported by the Navajo Epidemiology Center at different times throughout the week. Please note the last updated date.

Cases - Meets confirmatory laboratory evidence

Date is based on notification by states.

This data is provided by the Navajo Department of Health (NDOH) and Navajo Epidemiology Center (NEC) for public information purposes only. Data is collected from various sources and NEC makes every attempt to ensure accuracy and reliability of the data, however, the data is provided "as is" without warranty of any kind. NDOH/NEC disclaims any responsibility as to the quality, accuracy, reliability, timeliness, usefulness or completeness of data or information as provided. Data should not be used as advice or be a substitute for specific advice from a professional. Please be aware that the data may contain errors in collection, analysis and representation and may not meet the needs or expectations of users. Errors may not always be corrected and any use of data is at the risk of the user.