

Contact Tracing Program Performance Over Time

Program Goals

90%

of all cases reached

75%

*of all cases
complete intake*

75%

*of all contacts
complete intake*

Cumulative Results

90%

of all cases reached

71%

*of all cases
complete intake*

60%

*of all contacts
complete intake*

Last Two Week Period (10/4-10/17)

90.9%

of all cases reached

77.5%

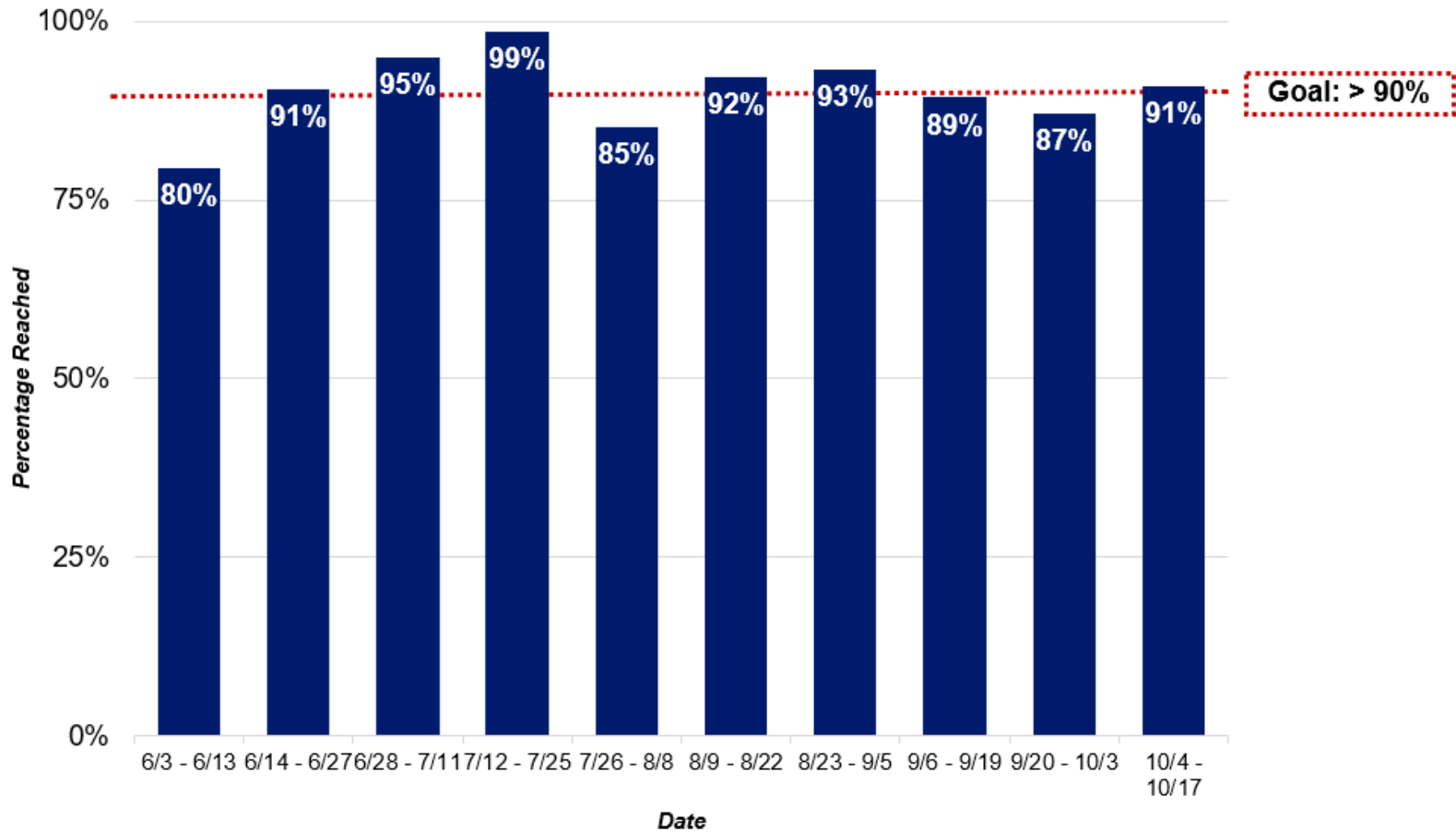
*of all cases
complete intake*

71.9%

*of all contacts
complete intake*

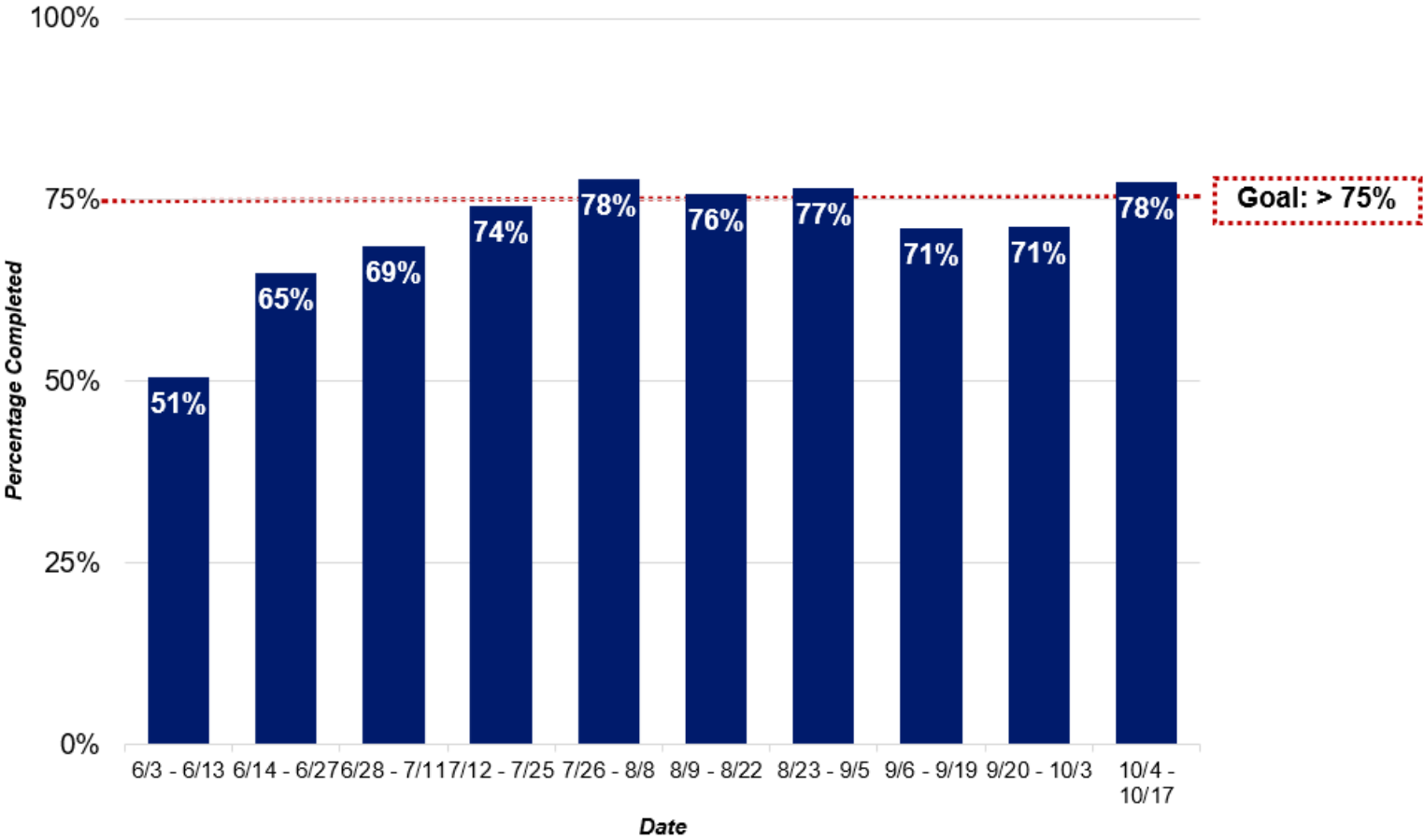
Program Notes: Over the course of the next few months, we will note key events and holidays that may impact the Contact Tracing Program.

Cases Reached*



**Includes symptomatic contacts in reported total cases number. Symptomatic contacts are identified through the process of following up on contacts, as opposed to regular testing. Percentage calculated as Total Cases Reached divided by Total New Cases during time two-week time period.*

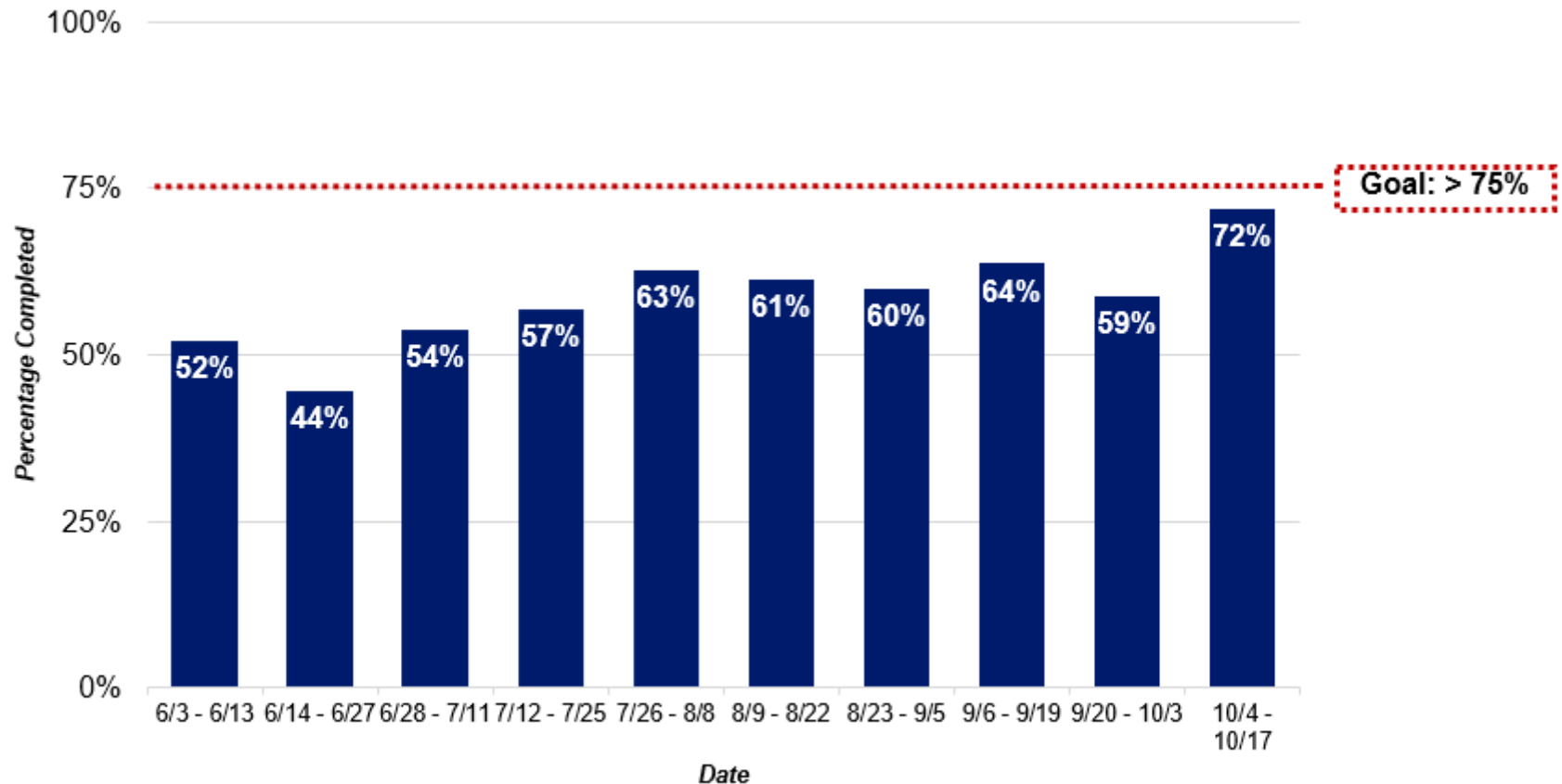
Intake Complete Among All Cases*



*Includes symptomatic contacts in reported total cases number.

Percentage calculated as Total Cases who Completed Intake divided by Total New Cases during two-week time period.

Intake Complete Among All Contacts*



*Contacts include only close contacts collected during the Contact Tracing process.
Percentage calculated as Total Contacts who Completed Intake divided by Total New Contacts during two-week time period.

Isolation and Quarantine Compliance*

Percentage of cases
who report having
NOT left their home
since last time they
spoke with us:**

98%

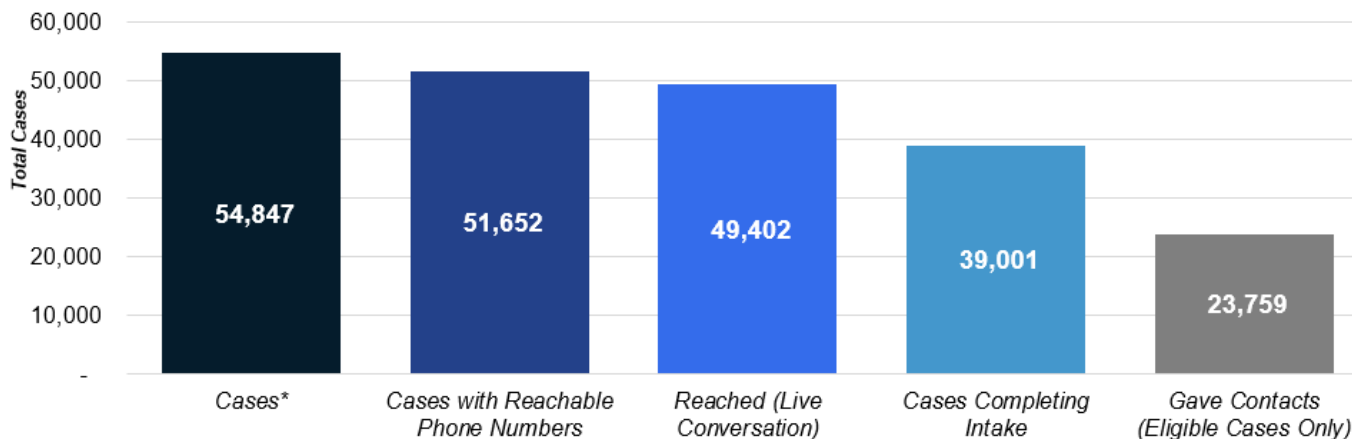
**Percentage of
contacts who report
having NOT left their
home since last time
they spoke with us:**

96%

**Data is from the two-week period from 10/4 – 10/17.*

*** Includes symptomatic contacts in reported total cases number.*

Cumulative Progress through New COVID-19 Cases*



Among cumulative cases as of this week...

54,847

Total Cases*

94%

of all cases had a reachable phone number.

90%

of all cases were reached for a live conversation.

71%

of all cases complete intake.

65%

of eligible cases completing intake gave contacts.

Among cumulative cases as of last week...

50,550

Total Cases*

94%

of all cases had a reachable phone number. (47,516)

90%

of all cases were reached for a live conversation. (45,403)

70%

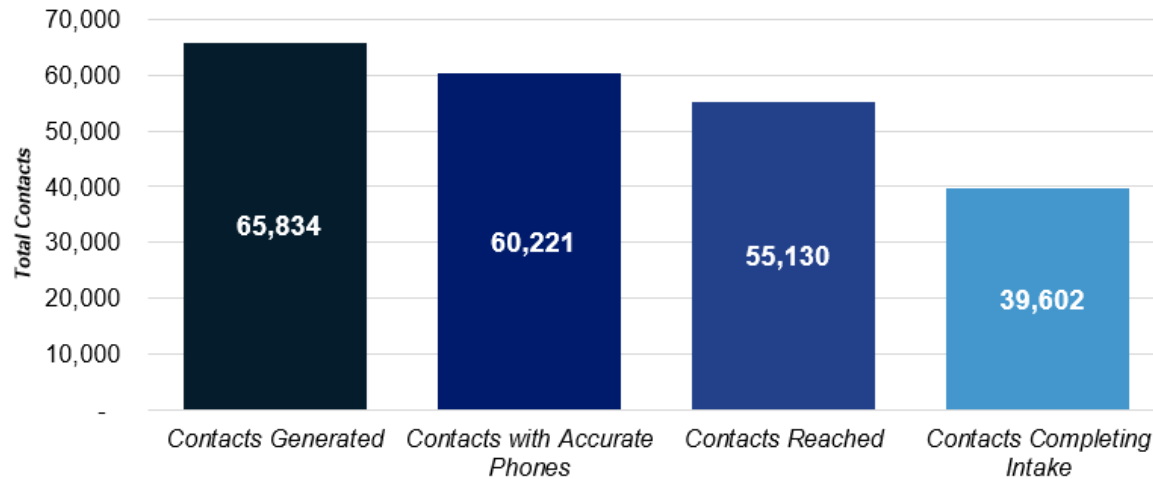
of all cases complete intake. (35,625)

66%

of eligible cases completing intake gave contacts. (22,025)

* Includes symptomatic contacts in reported total cases number.

Cumulative Progress through New COVID-19 Contacts



Among cumulative contacts as of this week...

65,834

Total Contacts

91%

of all contacts had a reachable phone number.

84%

of all contacts were reached for a live conversation.

60%

of all contacts complete intake.

Among cumulative contacts as of last week...

60,265

Total Contacts

91%

of all contacts had a reachable phone number. (54,977)

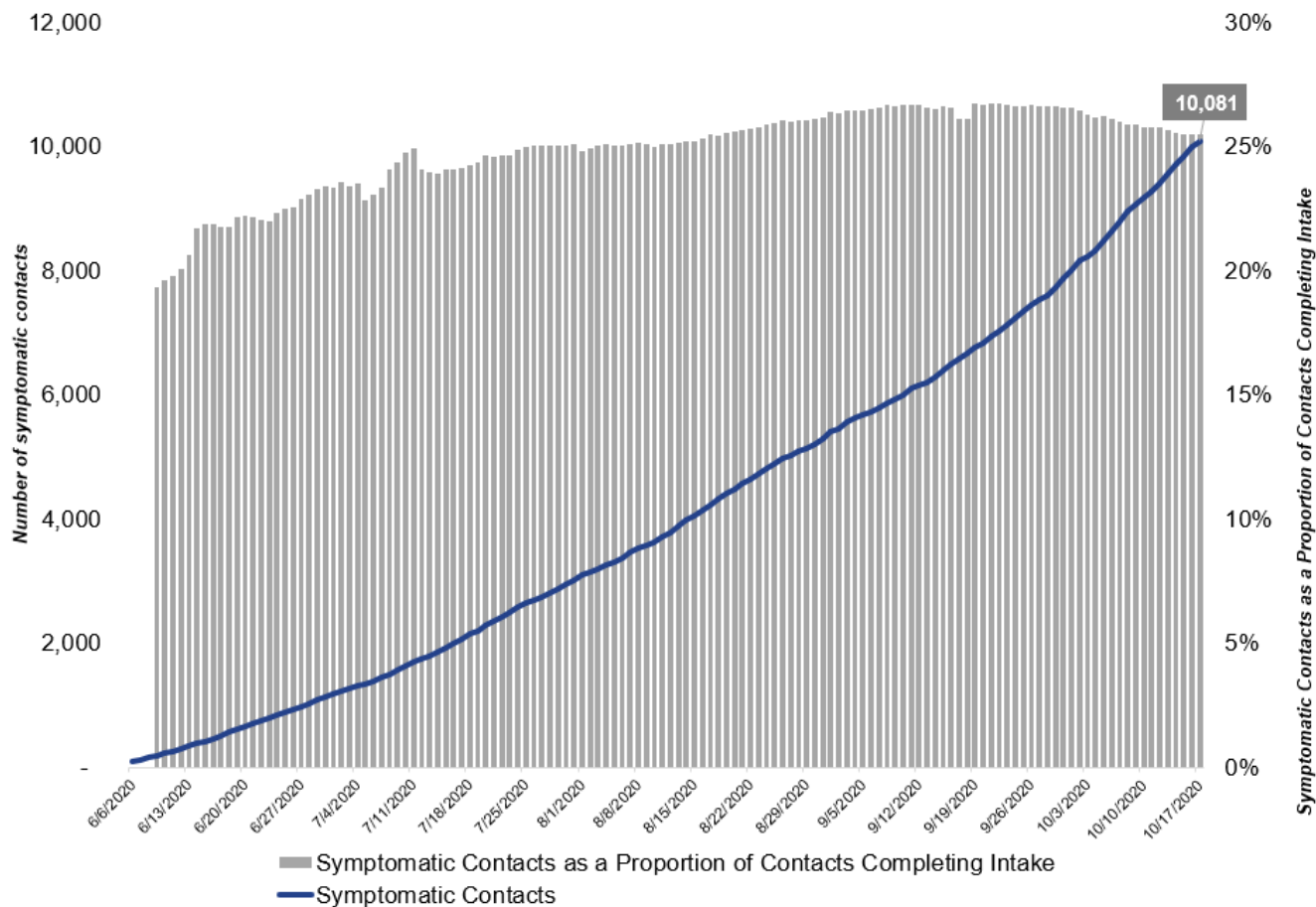
83%

of all contacts were reached for a live conversation. (50,232)

59%

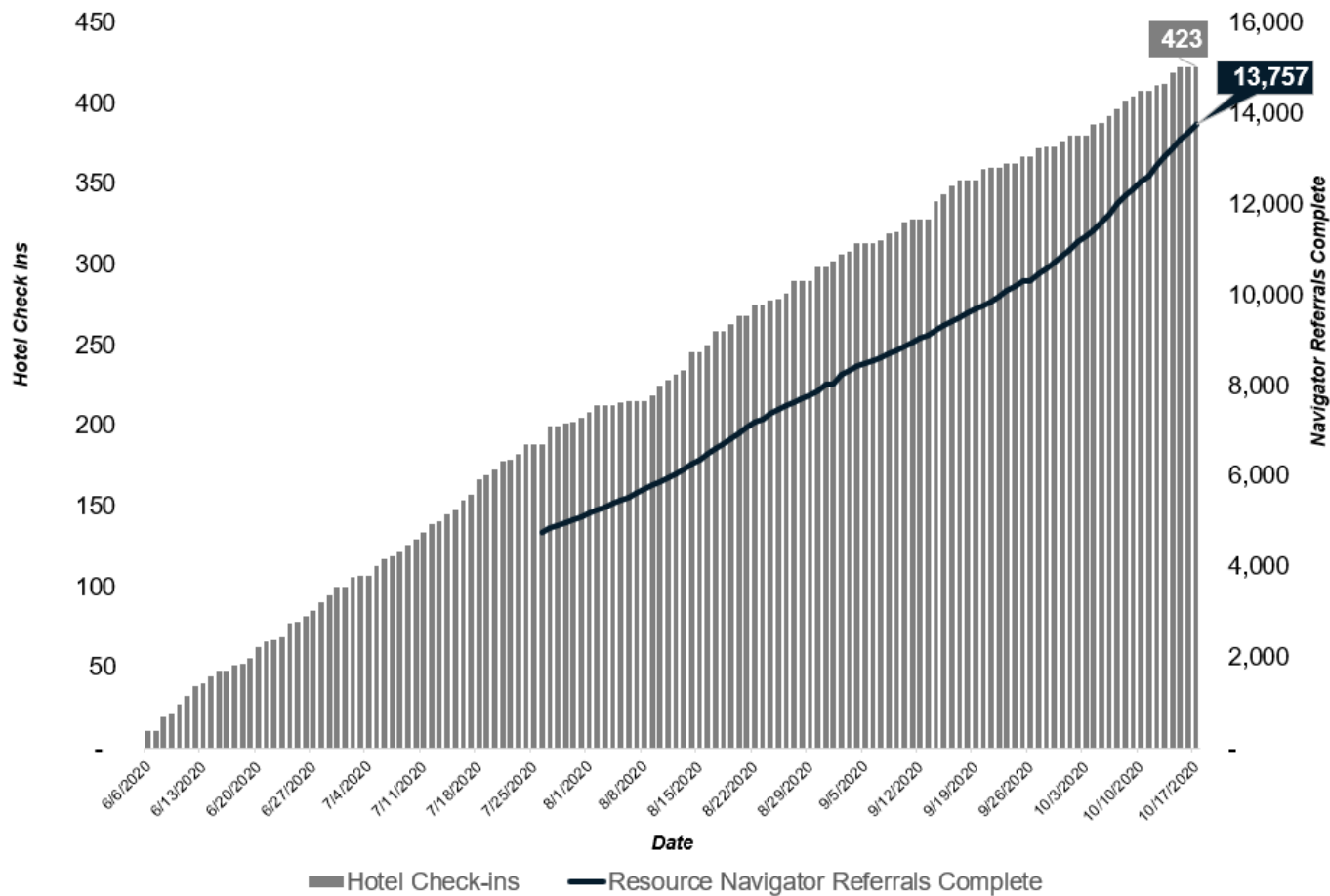
of all contacts complete intake. (35,564)

Cumulative Symptomatic Contacts



*Symptomatic contacts are identified through the process of following up on contacts, as opposed to regular testing.

Resource Navigator Referrals Complete* and Hotel Check-ins



* Tracking for Unique Resource Navigator Referrals Complete began on 7/23.