

# Contact Tracing Program Performance Over Time

## *Program Goals*

**90%**

*of all cases reached*

**75%**

*of all cases  
complete intake*

**75%**

*of all contacts  
complete intake*

## *Cumulative Results*

**90%**

*of all cases reached*

**72%**

*of all cases  
complete intake*

**61%**

*of all contacts  
complete intake*

## *Last Week Period (10/18-10/24)\**

**90.7%**

*of all cases reached*

**76.7%**

*of all cases  
complete intake*

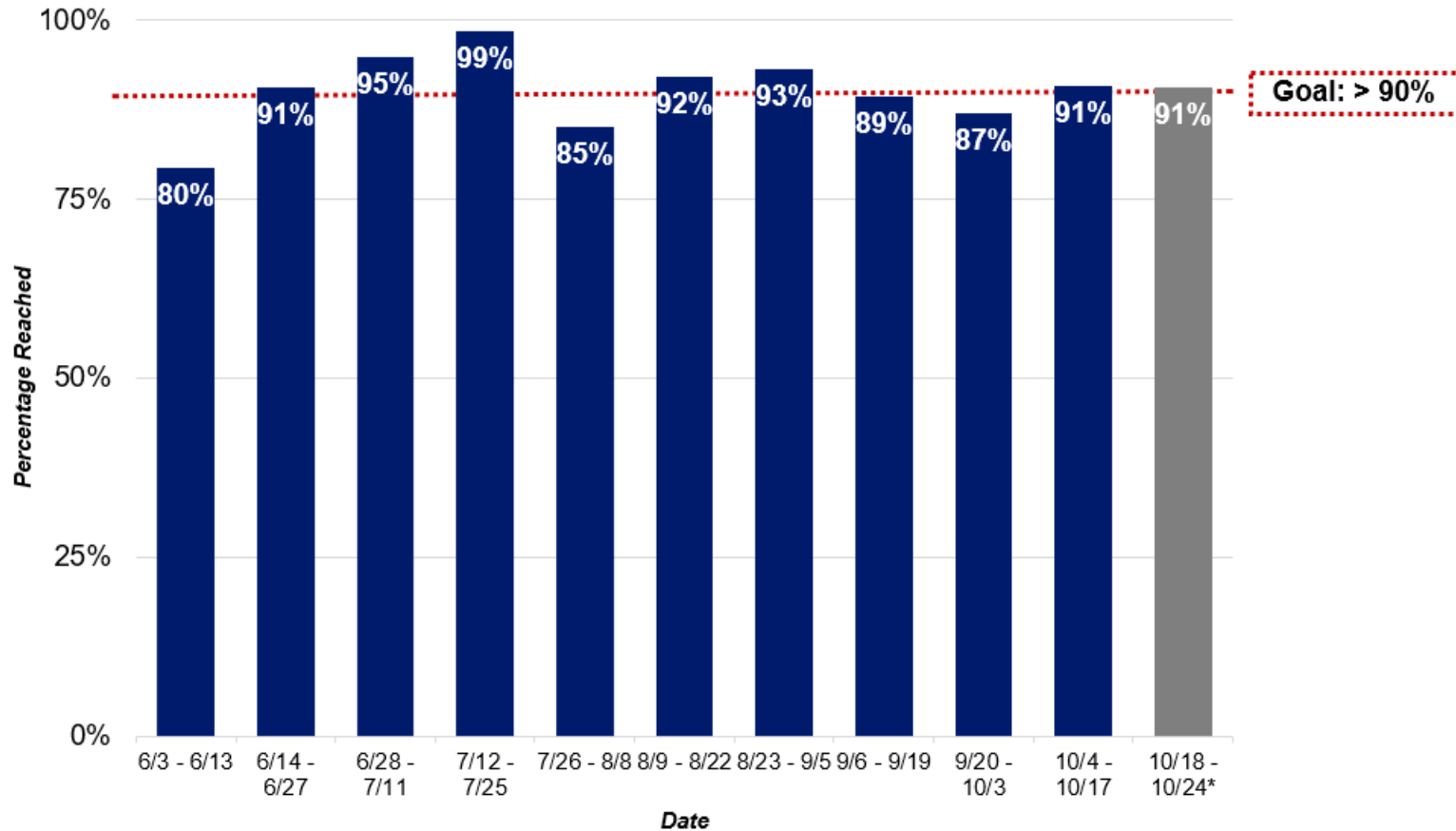
**68.5%**

*of all contacts  
complete intake*

**Program Notes:** Over the course of the next few months, we will note key events and holidays that may impact the Contact Tracing Program.

\*One Week Interval Reported.

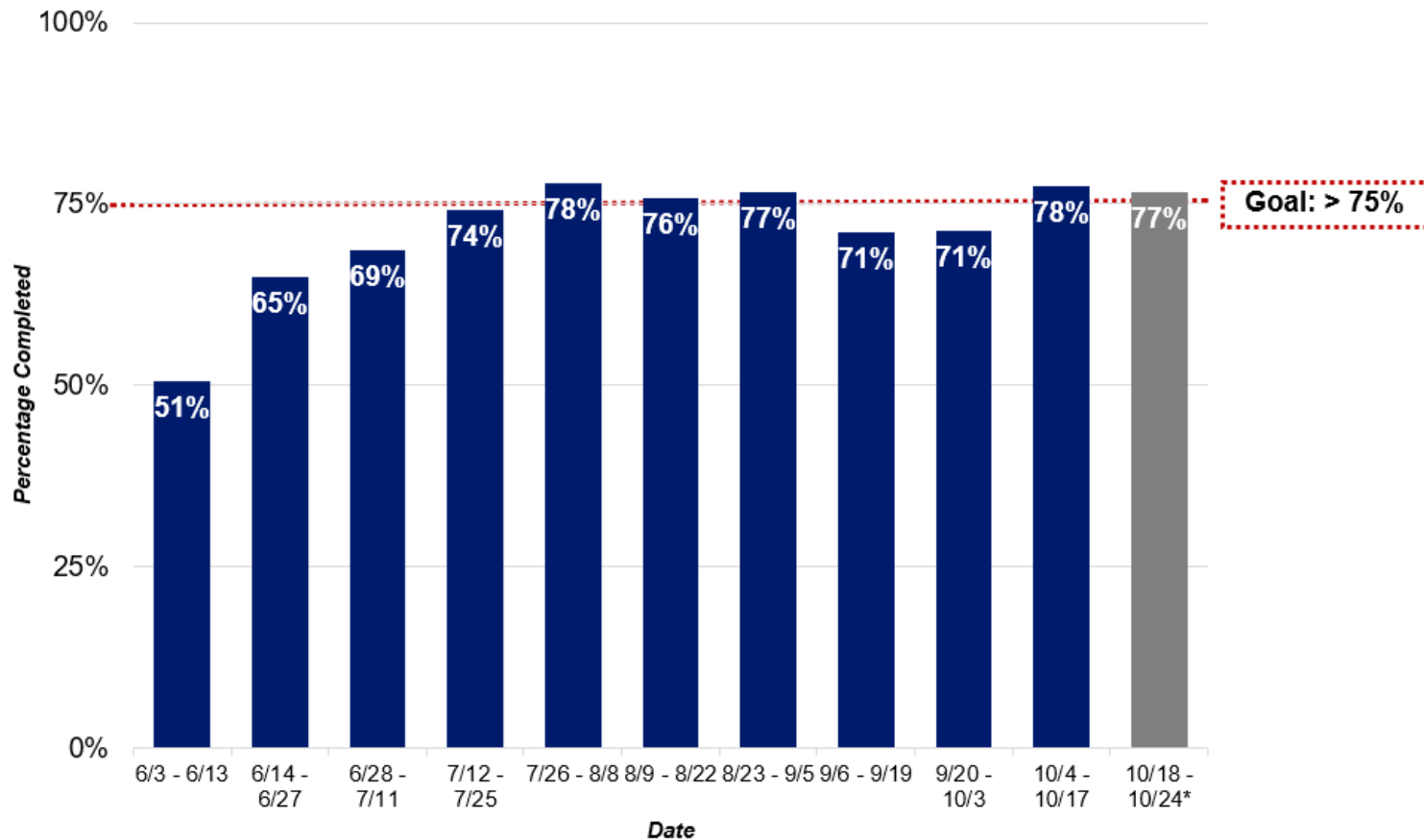
# Cases Reached\*



\*Percentage calculated as Total Cases Reached divided by Total New Cases during time two-week time period, except for 10/18 – 10/24, which is a one week period.

\*\*Includes symptomatic contacts in reported total cases number. Symptomatic contacts are identified through the process of following up on contacts, as opposed to regular testing.

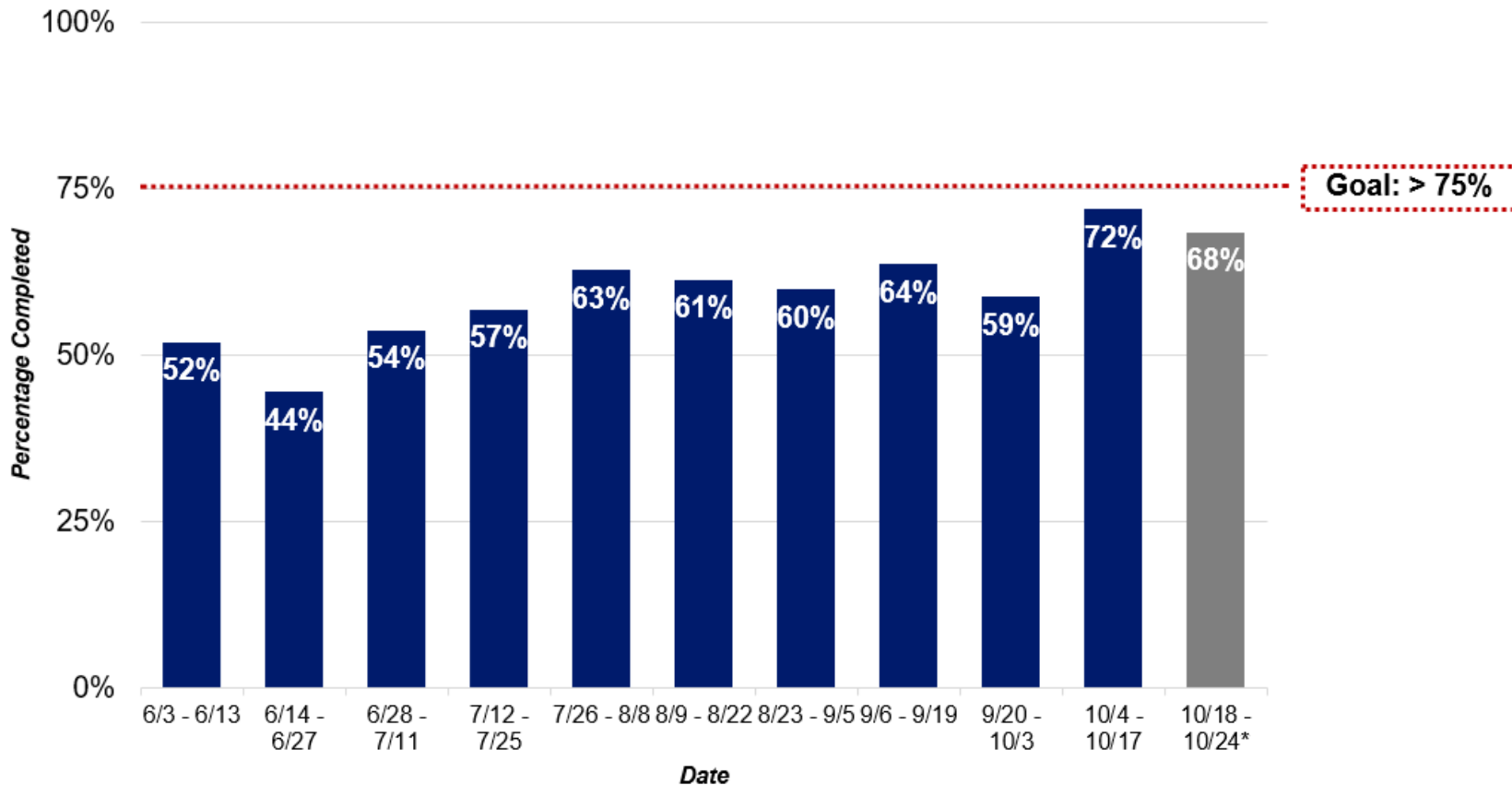
# Intake Complete Among All Cases\*



\*Percentage calculated as Total Cases Reached divided by Total New Cases during time two-week time period, except for 10/18 – 10/24, which is a one week period.

\*\*Includes symptomatic contacts in reported total cases number.

# Intake Complete Among All Contacts\*



\*Percentage calculated as Total Contacts who Completed Intake divided by Total New Contacts during two-week time period, except for 10/18 – 10/24, which is a one week period.

\*\*Contacts include only close contacts collected during the Contact Tracing process.

# Isolation and Quarantine Compliance\*

**Percentage of cases\*\*  
who report having  
NOT left their home  
since last time they  
spoke with us:**

**98%**

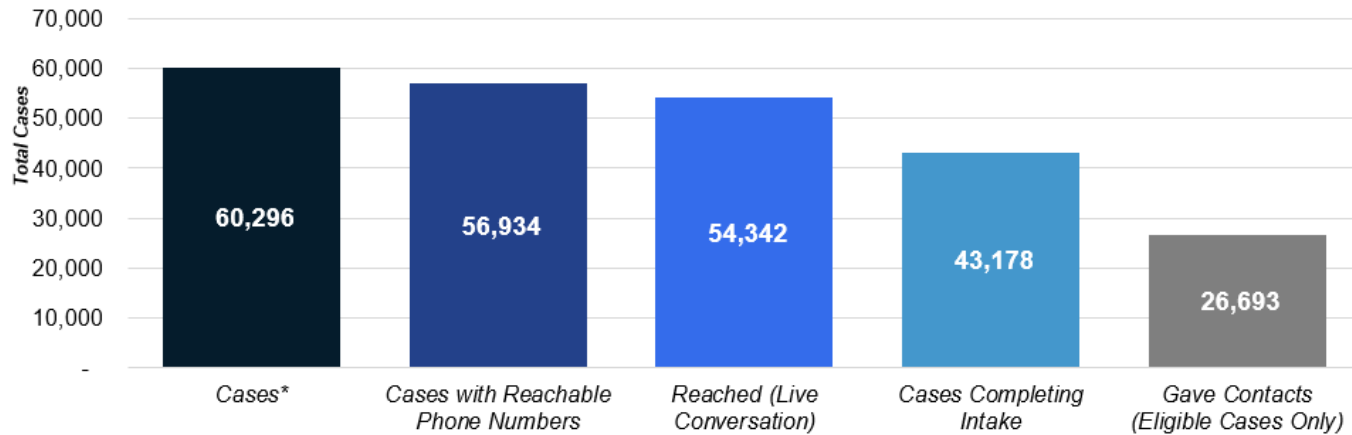
**Percentage of  
contacts who report  
having NOT left their  
home since last time  
they spoke with us:**

**96%**

*\*Data is from the one-week period from 10/18 – 10/24.*

*\*\* Includes symptomatic contacts in reported total cases number.*

# Cumulative Progress through New COVID-19 Cases\*



## Among cumulative cases as of this week...

**60,296**

Total Cases\*

**94%**

of all cases had a reachable phone number.

**90%**

of all cases were reached for a live conversation.

**72%**

of all cases complete intake.

**66%**

of eligible cases completing intake gave contacts.

## Among cumulative cases as of last week...

**54,847**

Total Cases\*

**94%**

of all cases had a reachable phone number. (51,652)

**90%**

of all cases were reached for a live conversation. (49,402)

**71%**

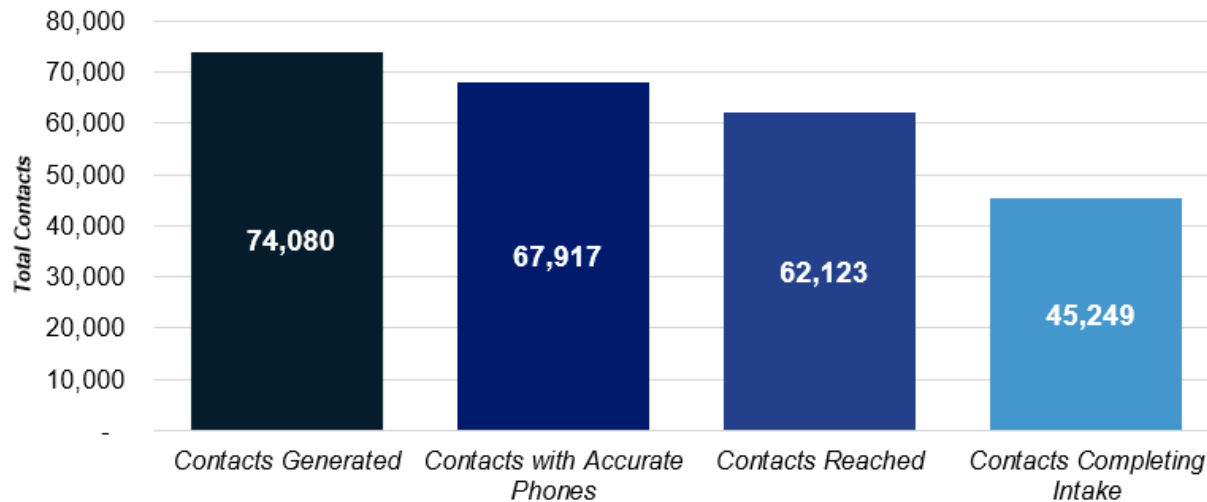
of all cases complete intake. (39,001)

**65%**

of eligible cases completing intake gave contacts. (23,759)

\* Includes symptomatic contacts in reported total cases number.

# Cumulative Progress through New COVID-19 Contacts



## *Among cumulative contacts as of this week...*

**74,080**

Total Contacts

**92%**

of all contacts had a reachable phone number.

**84%**

of all contacts were reached for a live conversation.

**61%**

of all contacts complete intake.

## *Among cumulative contacts as of last week...*

**65,834**

Total Contacts

**91%**

of all contacts had a reachable phone number. (60,221)

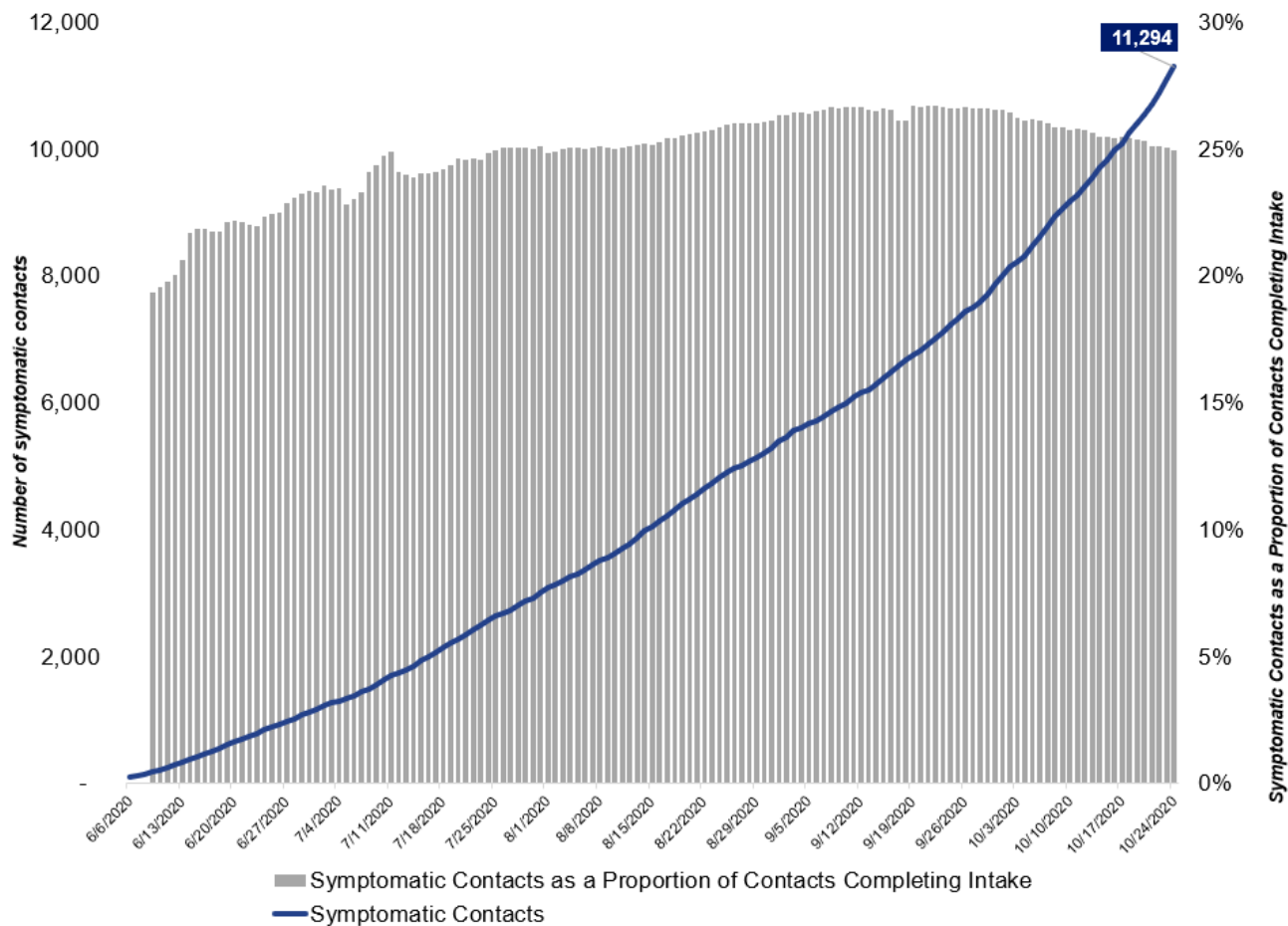
**84%**

of all contacts were reached for a live conversation. (55,130)

**60%**

of all contacts complete intake. (39,602)

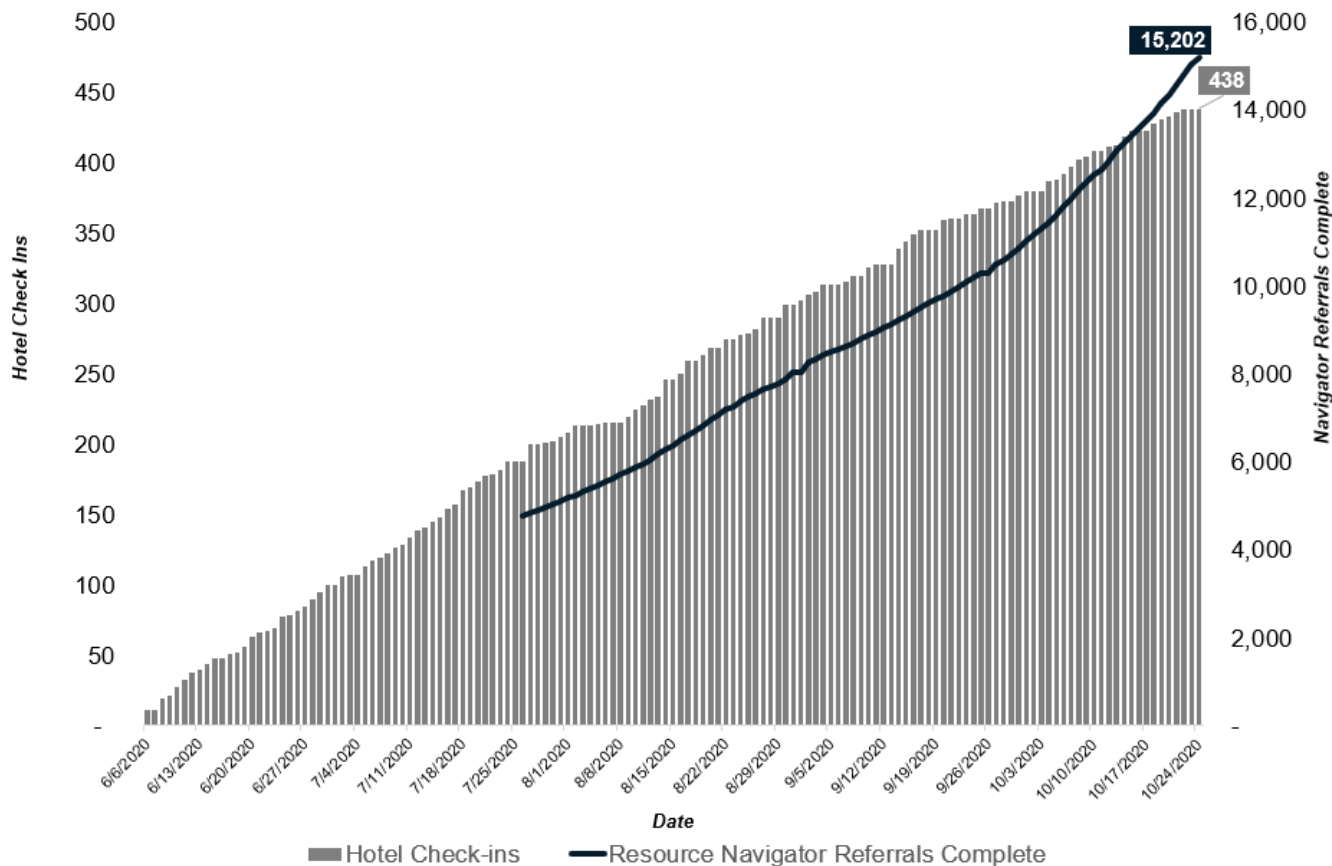
# Cumulative Symptomatic Contacts\*



\*Symptomatic contacts are identified through the process of following up on contacts, as opposed to regular testing.



# Resource Navigator Referrals Complete\* and Hotel Check-ins



\* Tracking for Unique Resource Navigator Referrals Complete began on 7/23.