

[Statewide](#)
[View County Data](#)
[View ZIP Code Data](#)

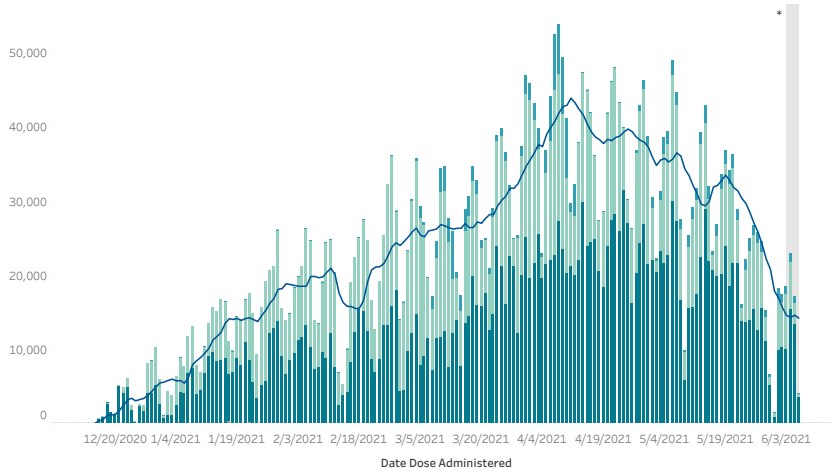
Data current as of 12:01 am 6/7/2021

Oregon's Vaccination Trend: Doses Administered by Day

This chart shows the total number of COVID-19 vaccine doses that have been reported to Oregon's ALERT IIS by day and manufacturer.

*Doses administered during this time may not yet be reported.

Change the date range:



Doses Administered	
2,293,598	Pfizer
1,641,377	Moderna
150,091	Johnson & Johns..
1,928	Unspecified
4,086,994	Total Doses Ad..
**People Vaccinated	
347,190	Series In Progress
1,939,623	Series Completet
2,286,813	Total People

People Vaccinated by Demographic Group

These tables show the number of people who have received COVID-19 vaccine as reported in Oregon's ALERT IIS by race, ethnicity, sex and age group. People are grouped by rarest racial and ethnic identity††. The order of racial and ethnic groups from rarest to most common for the vaccination data is: Native Hawaiian and Pacific Islander, Black or African American, American Indian and Alaska Native, Hispanic or Latino/a/x, Asian, White, then Other Race. Rarest race methodology does not have a multiracial group.

RACE/ETHNICITY††

Individuals contribute to the counts of only one racial/ethnic group.

	People Count	% of Total Persons Vaccinated
American Indian / Alaska Native	46,547	2.0%
Asian	123,891	5.4%
Black	44,735	2.0%
Hispanic	178,274	7.8%
Native Hawaiian / Pacific Islander	25,280	1.1%
White	1,567,811	68.6%
Other Race	106,140	4.6%
Unknown	194,135	8.5%

AGE GROUPS

	People Count	% of Total Persons Vaccinated
12 to 15	63,733	2.8%
16 to 19	95,332	4.2%
20 to 29	285,780	12.5%
30 to 39	348,938	15.3%
40 to 49	339,323	14.8%
50 to 59	340,890	14.9%
60 to 64	189,179	8.3%
65 to 69	200,759	8.8%
70 to 74	173,958	7.6%
75 to 79	113,428	5.0%
80+	135,490	5.9%

SEX

	People Count	% of Total Persons Vaccinated
Female	1,216,348	53.2%
Male	1,059,728	46.3%
Unknown	10,737	0.5%

[Check out Oregon Vaccination Rates ↗](#)

Data Source:

Oregon ALERT Immunization Information System (IIS) is a statewide, lifespan immunization registry.

Veterans Affairs, Department of Defense and Federal Bureau of Prisons do not report vaccinations to ALERT IIS. The data contained in this visualization does not include doses from these federal entities.

COVID-19 vaccination data are provisional and subject to change.

-On 4/9/2021, the data contained in this data visualization were refreshed with a new extract out of ALERT IIS, meaning the data is more accurate and representative of what is contained in the live system.

-On 5/10/2021 population estimates were updated from 2019 to 2020 data from Portland State University.

*COVID-19 vaccination providers must document vaccine administration in their medical record systems within 24 hours of administration, and use their best efforts to report administration data to ALERT IIS as soon as practicable and no later than 72 hours after administration.

Notes:

**Doses administered counts the number of vaccines administered; people vaccinated counts the number of unique individuals who received vaccine with valid dose numbers; doses with an invalid dose number, for example due to unresolved duplicate vaccination reports, data entry errors, dose spacing errors, or mixed manufacturers for first and second dose, will not show up in the count for persons vaccinated- It is anticipated that <1% of doses will have an invalid dose number.

† Series complete differs from fully vaccinated. Series complete refers to an individual that has received 2 doses of a 2-dose series (Moderna or Pfizer) or 1 dose of a 1-dose series (Johnson & Johnson); people are considered fully vaccinated 2 weeks after receiving their second dose of a 2-dose vaccine or 2 weeks after a single-dose vaccine. Per CDC's recommendation, individuals who have not passed the two week window after completing their series are NOT fully vaccinated and should continue taking all precautions until they are fully vaccinated.

†† Individuals contribute to only one race/ethnicity category. American Indian/Alaska Native may include data reported from the federally recognized Tribes of Oregon. Race and ethnicity is determined by rarest race methodology described in the REAL-D implementation guide from the Office of Equity and Inclusion at the Oregon Health Authority (<https://www.oregon.gov/oha/OEI/Pages/REALD.asp>; pg 10,94).