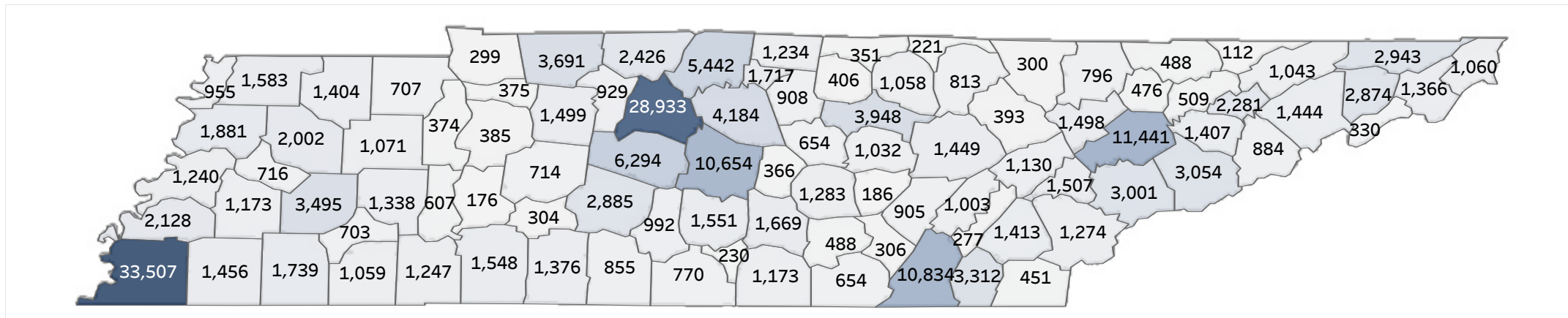
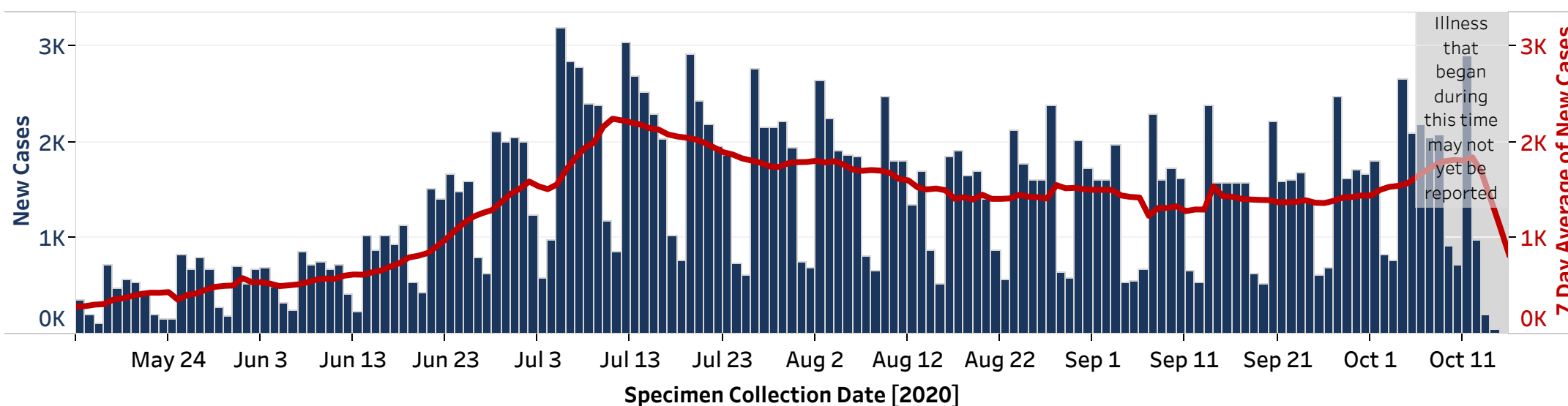


Total Cases: **223,493**    Confirmed Cases: **212,682**    Probable Cases: **10,811**    Inactive/Recovered Cases: **201,831**  
 Total Deaths: **2,871**    Confirmed Deaths: **2,738**    Probable Deaths: **133**

### Cases by County



### Daily Counts of Cases



### Demographics

Minimum Age	Average Age	Maximum Age
0	40	106

Age (years)	Cases	% of Cases	Deaths	% of Deaths
0-10	10,978	5%	4	0%
11-20	29,670	13%	1	0%
21-30	45,468	20%	19	1%
31-40	36,465	16%	43	1%
41-50	33,214	15%	115	4%
51-60	29,229	13%	286	10%
61-70	20,019	9%	568	20%
71-80	11,742	5%	856	30%
81+	6,384	3%	979	34%
Pending	324	0%	0	0%

Patient Sex	Cases	% of Cases	Deaths	% of Deaths
Female	114,879	51%	1,274	44%
Male	106,752	48%	1,597	56%
Pending	1,862	1%	0	0%

Race	Cases	% of Cases	Deaths	% of Deaths
American Indian or Alaska Native	284	0%	4	0%
White	126,119	56%	1,949	68%
Black or African American	38,757	17%	758	26%
Native Hawaiian or Other Pacific Islander	168	0%	2	0%
Asian	1,985	1%	25	1%
Other/Multiracial	25,479	11%	112	4%
Pending	30,701	14%	21	1%

Ethnicity	Cases	% of Cases	Deaths	% of Deaths
Not Hispanic or Latino	151,007	68%	2,691	94%
Hispanic or Latino	26,442	12%	153	5%
Pending	46,044	21%	27	1%

### Outcomes

Ever Hospitalized	Cases	% of Cases
Yes	9,489	4%
No	136,811	61%
Pending	77,193	35%

*Please note for hospitalizations:* Information about hospitalization status is gathered at the time of diagnosis, therefore this information may be incomplete. This number indicates the number of patients that were ever hospitalized during their illness, it does not indicate the number of patients currently hospitalized.

Inactive/Recovered	Cases	% of Cases
Yes	201,831	90%

*Please note for inactive/recovered:* TDH defines "inactive/recovered" as people who are (1) at least 14 days beyond their symptom onset date, or are at least 14 days beyond the first test confirming their illness if asymptomatic, and (2) are not deceased.

Deceased	Cases	% of Cases
Yes	2,871	1%
No	220,622	99%

*Please note for deaths:* Some deaths may be reported by health care providers, hospitals, medical examiners, local health departments, or others before they are included in the statewide count.

### Laboratory Testing

Results	Number of Tests
PCR Positive	258,427
PCR Negative	3,005,275
Total	3,263,702

*Please note, these data are meant to provide a rough estimate of testing volume. Due to different source data, numbers may differ slightly from day to day. Laboratory reports of positive cases are reported to metro and local health departments as soon as results are available. State numbers are updated at 2pm daily and there may be a lag in the reporting of cumulative numbers at the state level. Please note numbers within tables may not add up to total confirmed number of cases due to reporting delays and/or missing data. Percentages may not add up to 100.0% due to rounding.*

### Cases and Labs by County

County	Cases (Confirmed and Probable)	PCR Positive Tests	PCR Negative Tests	Active Cases	Deaths	Inactive/Recovered Cases
Anderson	1,498	1,682	28,966	174	13	1,311
Bedford	1,551	1,827	14,574	134	20	1,397
Benton	374	398	5,099	27	9	338
Bledsoe	905	952	8,412	29	4	872
Blount	3,001	3,432	32,808	279	31	2,691
Bradley	3,312	3,859	28,330	221	21	3,070
Campbell	796	802	13,060	254	6	536
Cannon	366	428	4,552	46	2	318
Carroll	1,071	1,102	12,192	80	24	967
Carter	1,366	1,486	17,923	115	32	1,219
Cheatham	929	1,092	12,223	74	11	844
Chester	703	782	6,047	38	13	652
Claiborne	488	538	11,666	29	6	453
Clay	351	356	3,243	83	7	261
Cocke	884	923	9,137	83	12	789
Coffee	1,669	1,892	22,018	261	19	1,389
Crockett	716	723	4,177	122	19	575
Cumberland	1,449	1,754	25,563	153	24	1,272
Davidson	28,933	36,155	398,757	1,373	324	27,236
Decatur	607	652	6,554	40	11	556
DeKalb	654	794	9,044	53	16	585
Dickson	1,499	1,795	16,011	141	18	1,340
Dyer	1,881	1,946	13,337	313	24	1,544
Fayette	1,456	1,796	17,470	157	21	1,278
Fentress	813	882	5,028	123	6	684
Franklin	1,173	1,416	16,876	114	14	1,045
Gibson	2,002	2,130	16,967	147	36	1,819
Giles	855	994	10,286	129	31	695
Grainger	509	560	6,943	69	4	436
Greene	1,444	1,647	17,918	193	48	1,203
Grundy	488	551	3,009	88	8	392
Hamblen	2,281	2,451	24,859	212	43	2,026
Hamilton	10,834	12,205	151,509	724	101	10,009
Hancock	112	121	2,120	2	3	107
Hardeman	1,739	1,977	15,442	97	32	1,610
Hardin	1,247	1,328	13,629	114	19	1,114
Hawkins	1,043	1,154	11,527	134	23	886
Haywood	1,173	1,275	7,519	92	25	1,056
Henderson	1,338	1,580	9,861	94	24	1,220
Henry	707	827	10,703	41	10	656
Hickman	714	850	8,341	55	13	646
Houston	375	399	2,967	48	14	313
Humphreys	385	399	6,210	74	4	307
Jackson	406	451	2,766	39	5	362
Jefferson	1,407	1,461	19,133	161	18	1,228
Johnson	1,060	1,128	7,261	266	6	788
Knox	11,441	12,370	148,680	972	85	10,384
Lake	955	1,156	6,604	20	3	932
Lauderdale	1,240	1,285	12,451	168	18	1,054
Lawrence	1,376	1,554	12,437	216	17	1,143
Lewis	304	336	5,100	69	2	233
Lincoln	770	896	9,004	93	2	675
Loudon	1,507	1,640	15,214	193	10	1,304
Macon	1,234	1,465	8,305	100	22	1,112
Madison	3,495	3,604	31,137	293	78	3,124
Marion	654	778	7,212	71	9	574
Marshall	992	1,124	10,481	154	8	830
Maury	2,885	3,270	30,009	309	35	2,541
McMinn	1,413	1,628	19,289	183	32	1,198
McNairy	1,059	1,188	8,779	79	24	956
Meigs	277	314	3,533	37	4	236
Monroe	1,274	1,425	12,471	143	22	1,109
Montgomery	3,691	4,038	46,312	375	51	3,265
Moore	230	255	2,773	32	2	196
Morgan	393	418	8,898	49	6	338
Obion	1,583	1,675	11,653	223	17	1,343
Overton	1,058	1,107	8,175	204	11	843
Perry	176	190	3,819	18	1	157
Pickett	221	212	1,253	62	4	155
Polk	451	515	4,258	26	13	412
Putnam	3,948	4,646	34,167	379	51	3,518
Rhea	1,003	1,186	12,067	74	16	913
Roane	1,130	1,280	20,050	157	6	967
Robertson	2,426	2,934	19,629	112	40	2,274
Rutherford	10,654	12,932	95,681	727	105	9,822
Scott	300	306	5,007	48	3	249
Sequatchie	306	337	5,670	45	4	257
Sevier	3,054	3,349	28,602	273	20	2,761
Shelby	33,507	41,401	415,155	1,570	548	31,389
Smith	908	1,156	6,438	97	12	799
Stewart	299	328	3,334	48	7	244
Stullivan	2,943	3,137	34,857	487	42	2,414
Sumner	5,442	6,462	51,896	311	106	5,025
Tipton	2,128	2,442	23,834	200	22	1,906
Trousdale	1,717	1,797	5,434	24	7	1,686
Unicoi	330	377	7,140	33	1	296
Union	476	489	5,450	47	2	427
Van Buren	186	204	2,405	17	1	168
Warren	1,283	1,430	14,908	145	9	1,129
Washington	2,874	3,274	35,313	310	42	2,522
Wayne	1,548	1,682	6,413	22	7	1,519
Weakley	1,404	1,512	12,406	101	23	1,280
White	1,032	1,287	11,619	97	14	921
Williamson	6,294	7,206	78,205	573	47	5,674
Wilson	4,184	4,889	42,931	363	52	3,769
Out of State	3,440	3,265	312,419	525	31	2,884
Pending	3,434	3,724	194,361	622	3	2,809