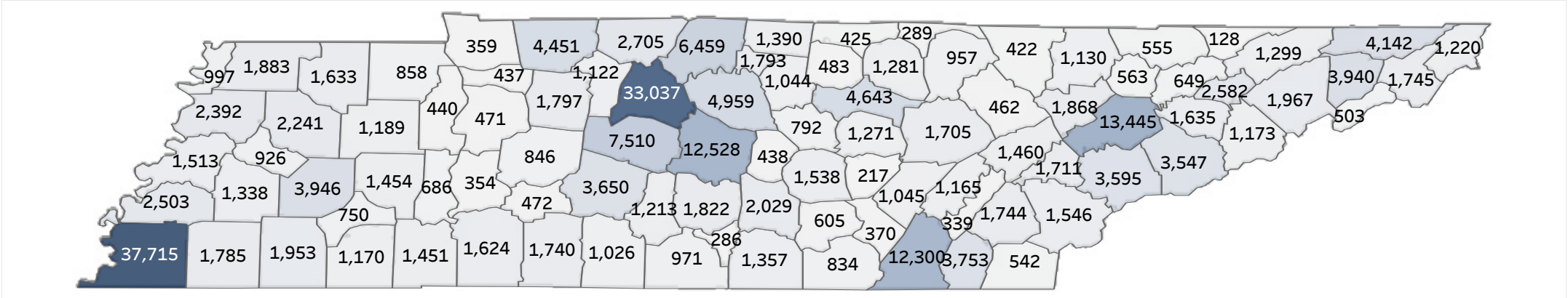
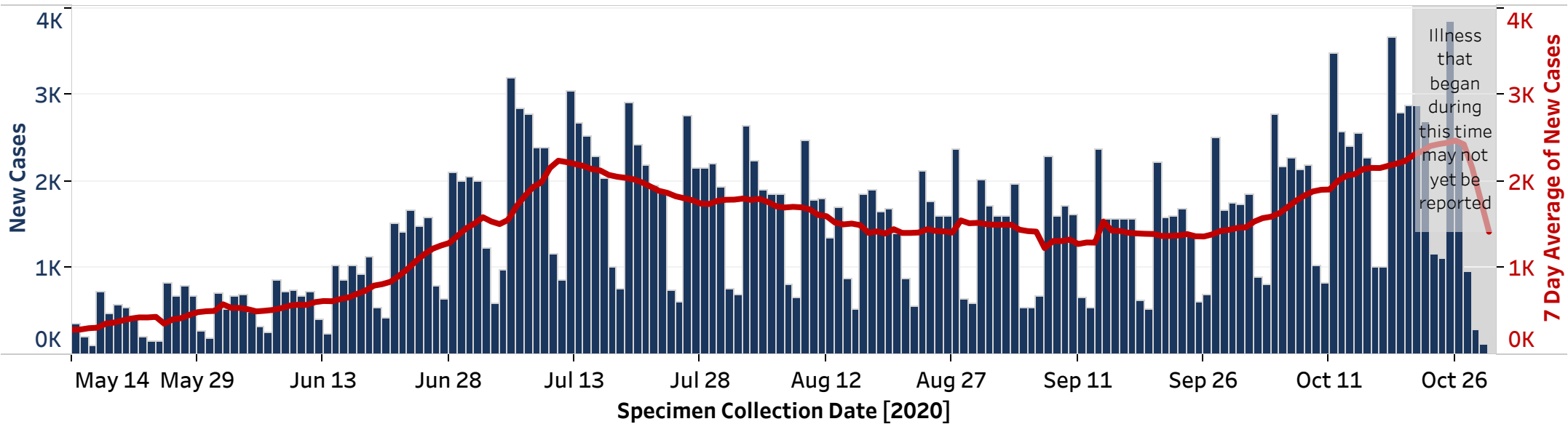


Total Cases: **260,672** Confirmed Cases: **245,904** Probable Cases: **14,768** Inactive/Recovered Cases: **231,887**
 Total Deaths: **3,353** Confirmed Deaths: **3,165** Probable Deaths: **188**

Cases by County



Daily Counts of Cases



Demographics

Minimum Age	Average Age	Maximum Age
0	40	106

Age (years)	Cases	% of Cases	Deaths	% of Deaths
0-10	12,733	5%	4	0%
11-20	34,477	13%	1	0%
21-30	51,959	20%	21	1%
31-40	41,866	16%	46	1%
41-50	38,639	15%	126	4%
51-60	34,644	13%	325	10%
61-70	24,004	9%	657	20%
71-80	14,264	5%	1,003	30%
81+	7,737	3%	1,170	35%
Pending	349	0%	0	0%

Patient Sex	Cases	% of Cases	Deaths	% of Deaths
Female	134,976	52%	1,480	44%
Male	123,646	47%	1,872	56%
Pending	2,050	1%	1	0%

Race	Cases	% of Cases	Deaths	% of Deaths
American Indian or Alaska Native	325	0%	4	0%
White	149,449	57%	2,338	70%
Black or African American	42,948	16%	798	24%
Native Hawaiian or Other Pacific Islander	187	0%	3	0%
Asian	2,253	1%	27	1%
Other/Multiracial	27,918	11%	133	4%
Pending	37,592	14%	50	1%

Ethnicity	Cases	% of Cases	Deaths	% of Deaths
Not Hispanic or Latino	175,050	67%	3,110	93%
Hispanic or Latino	27,922	11%	165	5%
Pending	57,700	22%	78	2%

Outcomes

Ever Hospitalized	Cases	% of Cases
Yes	10,306	4%
No	152,307	58%
Pending	98,059	38%

Please note for hospitalizations: Information about hospitalization status is gathered at the time of diagnosis, therefore this information may be incomplete. This number indicates the number of patients that were ever hospitalized during their illness, it does not indicate the number of patients currently hospitalized.

Inactive/Recovered	Cases	% of Cases
Yes	231,887	89%

Please note for inactive/recovered: TDH defines "inactive/recovered" as people who are (1) at least 14 days beyond their symptom onset date, or are at least 14 days beyond the first test confirming their illness if asymptomatic, and (2) are not deceased.

Deceased	Cases	% of Cases
Yes	3,353	1%
No	257,319	99%

Please note for deaths: Some deaths may be reported by health care providers, hospitals, medical examiners, local health departments, or others before they are included in the statewide count.

Laboratory Testing

Test Type	Positive	Negative	Total
PCR	295,923	3,361,082	3,657,005
Antigen	14,144	102,279	116,423

Please note, these data are meant to provide a rough estimate of testing volume. Due to different source data, numbers may differ slightly from day to day. Laboratory reports of positive cases are reported to metro and local health departments as soon as results are available. State numbers are updated at 2pm daily and there may be a lag in the reporting of cumulative numbers at the state level. Please note numbers within tables may not add up to total confirmed number of cases due to reporting delays and/or missing data. Percentages may not add up to 100.0% due to rounding.

Cases and Labs by County

County	Cases (Confirmed and Probable)	PCR Positive Tests	PCR Negative Tests	Active Cases	Deaths	Inactive/Recovered Cases
Anderson	1,868	2,060	32,307	272	16	1,580
Bedford	1,822	2,086	16,342	220	23	1,579
Benton	440	467	5,570	32	10	398
Bledsoe	1,045	1,091	9,289	45	4	996
Blount	3,595	4,052	37,033	427	41	3,127
Bradley	3,753	4,325	31,034	302	24	3,427
Campbell	1,130	1,081	14,908	204	13	913
Cannon	438	506	4,994	46	2	390
Carroll	1,189	1,222	13,029	83	27	1,079
Carter	1,745	1,874	20,181	280	36	1,429
Cheatham	1,122	1,287	13,632	123	12	987
Chester	750	829	6,485	35	16	699
Claiborne	555	592	12,544	51	8	496
Clay	425	395	3,524	41	16	368
Cocke	1,173	1,150	10,503	227	17	929
Coffee	2,029	2,200	24,725	247	28	1,754
Crockett	926	857	4,572	106	23	797
Cumberland	1,705	2,040	28,063	183	27	1,495
Davidson	33,037	40,939	456,098	2,334	352	30,351
Decatur	686	718	7,187	54	11	621
DeKalb	792	938	10,025	104	18	670
Dickson	1,797	2,047	17,761	227	20	1,550
Dyer	2,392	2,354	14,641	296	38	2,058
Fayette	1,785	2,180	19,602	178	27	1,580
Fentress	957	1,029	5,873	71	12	874
Franklin	1,357	1,625	18,381	131	25	1,201
Gibson	2,241	2,301	18,179	153	48	2,040
Giles	1,026	1,196	11,908	114	38	874
Grainger	649	693	7,789	105	4	540
Greene	1,967	2,160	20,999	365	55	1,547
Grundy	605	677	3,622	61	13	531
Hamblen	2,582	2,733	27,489	222	50	2,310
Hamilton	12,300	13,702	166,603	1,005	111	11,184
Hancock	128	133	2,236	12	3	113
Hardeman	1,953	2,177	16,969	113	33	1,807
Hardin	1,451	1,496	15,028	102	23	1,326
Hawkins	1,299	1,406	13,441	170	29	1,100
Haywood	1,338	1,430	8,367	104	28	1,206
Henderson	1,454	1,687	10,533	77	26	1,351
Henry	858	996	11,419	100	12	746
Hickman	846	978	9,056	88	15	743
Houston	437	454	3,695	38	17	382
Humphreys	471	479	6,704	58	4	409
Jackson	483	518	3,095	47	8	428
Jefferson	1,635	1,671	21,520	145	24	1,466
Johnson	1,220	1,247	8,390	113	8	1,099
Knox	13,445	14,490	164,958	1,225	96	12,124
Lake	997	1,204	6,965	22	4	971
Lauderdale	1,513	1,485	13,630	185	18	1,310
Lawrence	1,740	1,912	14,488	241	20	1,479
Lewis	472	512	5,949	117	6	349
Lincoln	971	1,093	9,764	136	4	831
Loudon	1,711	1,868	17,127	155	13	1,543
Macon	1,390	1,617	9,099	92	25	1,273
Madison	3,946	3,870	33,881	319	81	3,546
Marion	834	981	8,528	104	14	716
Marshall	1,213	1,377	12,050	153	12	1,048
Maury	3,650	4,066	35,725	538	39	3,073
McMinn	1,744	1,986	21,694	197	39	1,508
McNairy	1,170	1,284	9,617	62	30	1,078
Meigs	339	386	3,981	46	6	287
Monroe	1,546	1,723	14,165	189	29	1,328
Montgomery	4,451	4,687	52,192	488	61	3,902
Moore	286	306	2,960	34	2	250
Morgan	462	493	9,501	39	7	416
Obion	1,883	1,896	12,703	179	27	1,677
Overton	1,281	1,307	9,009	108	25	1,148
Perry	354	365	4,241	139	9	206
Pickett	289	263	1,601	17	9	263
Polk	542	604	4,684	53	13	476
Putnam	4,643	5,273	38,768	389	59	4,195
Rhea	1,165	1,361	13,612	106	21	1,038
Roane	1,460	1,632	23,026	240	4	1,212
Robertson	2,705	3,222	22,033	166	48	2,496
Rutherford	12,528	14,956	108,773	1,209	116	11,203
Scott	422	419	5,764	80	5	337
Sequatchie	370	405	6,411	42	2	326
Sevier	3,547	3,863	32,082	323	23	3,201
Shelby	37,715	46,258	460,146	2,596	571	34,548
Smith	1,044	1,313	7,057	82	14	948
Stewart	359	388	3,711	42	13	304
Sullivan	4,142	4,322	40,481	837	53	3,252
Sumner	6,459	7,574	59,105	637	117	5,705
Tipton	2,503	2,771	26,202	264	23	2,216
Trousdale	1,793	1,882	5,844	42	9	1,742
Unicoi	503	508	7,826	134	5	364
Union	563	581	5,967	51	4	508
Van Buren	217	235	2,812	18	2	197
Warren	1,538	1,684	16,947	172	11	1,355
Washington	3,940	4,313	40,728	756	59	3,125
Wayne	1,624	1,754	7,026	62	7	1,555
Weakley	1,633	1,713	13,351	142	26	1,465
White	1,271	1,543	13,180	152	15	1,104
Williamson	7,510	8,434	88,758	765	57	6,688
Wilson	4,212	5,746	48,187	472	34	4,423
Out of State	4,919	3,763	345,893	682	66	3,494
Pending	2,162	2,157	213,535	622	6	1,534