

Immunization Unit

The mission of the Wyoming Immunization Unit is to support and promote immunization services through collaboration, education, and resources to reduce vaccine-preventable diseases in Wyoming.

Contact Info:

Wyoming Department of Health
Immunization Unit
122 West 25th Street, 3rd Floor West
Cheyenne, WY 82002
Phone: (307) 777-7952
Fax: (307) 777-3615
[Email Us](#)

[Home](#) » [Public Health Division](#) » [Immunization Unit](#) » [Wyoming COVID-19 Vaccine Information](#)

Immunization Unit



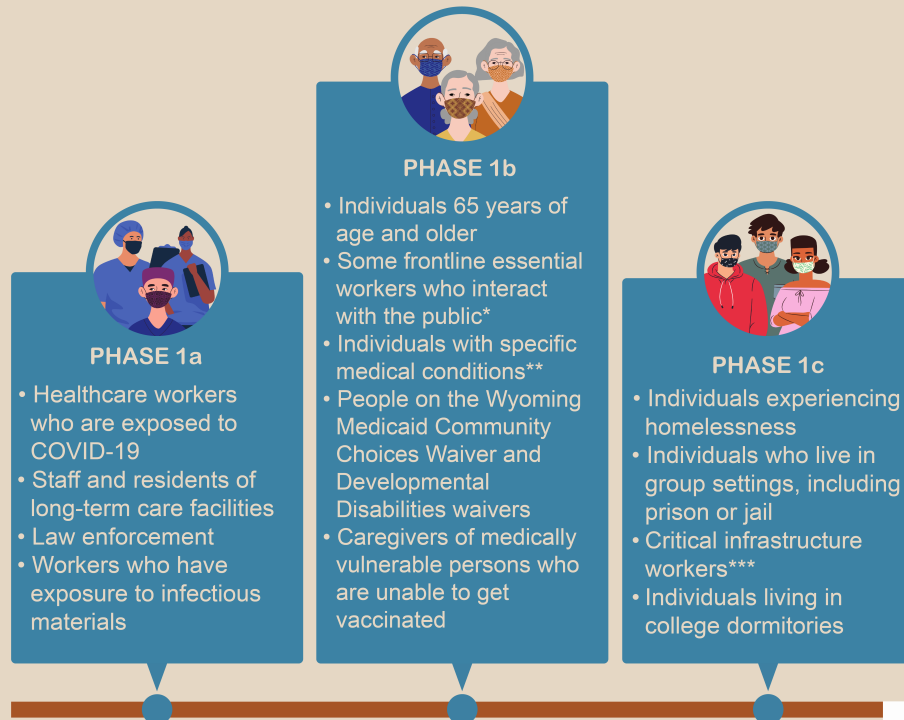
Wyoming COVID-19 Vaccine Information

Vaccine supplies continue to be limited. Because of this, Wyoming is administering the vaccine in a phased approach. We are currently in Phase 1.

The image below shows which priority populations are part of Phase 1. [Counties are administering the vaccine locally](#) and are working through Phases 1a-1c. Currently, most counties are vaccinating groups that fall into 1a and some groups in 1b.

Click on the image, or [here](#), to see more details for each priority designation. You can also view this [one-page snapshot](#) of progress through Phase 1.

Who is included in Phase 1 of Wyoming's COVID-19 vaccine distribution plan?



***Frontline essential workers** include police, firefighters, correctional staff, funeral service practitioners, congregate care employees, healthcare providers, healthcare facility surveyors, teachers, child service providers, public transit employees, food supply chain workers, veterinarians, court system employees, and custodial staff responsible for cleaning areas contaminated with COVID-19. The following workers are also eligible if they interact with the public for more than 15 minutes and are unable to physically distance: social workers, US postal service and delivery workers, security officers, and workforce center employees.

****Health conditions** include cancer, chronic kidney disease, chronic obstructive pulmonary disease, solid organ transplant, sickle cell disease, down syndrome, pregnancy, diabetes, heart conditions, obesity (BMI over 30), immunocompromised state, and severe neurologic conditions (stroke and dementia).

*****Critical infrastructure workers** defined by CISA guidance retrieved from <https://www.cisa.gov/>.



What You Need to Know

- Vaccines are currently available in **limited supply**.
 - Because of this, Wyoming counties are **vaccinating in phases**.

FIND YOUR COUNTY TO LEARN MORE

- The vaccine is **FREE**.
 - Your insurance status does not affect your ability to receive the vaccine for free.
- The vaccine is **SAFE**.
 - Learn more about the **benefits** and **facts** related to the COVID-19 vaccine.
 - CDC has **safety information and guidance** to help you prepare for your vaccine.
 - The authorized vaccines require two doses for maximum effectiveness.
- You can access more information on our **Vaccine FAQ**.

Wyoming Distribution

2/5/21

First Vaccine Doses Received: **66,000** (33,300 Pfizer/32,700 Moderna)

First Vaccine Doses Administered: **54,184**

Second Vaccine Doses Received: **32,200** (11,700 Pfizer/20,500 Moderna)

Second Vaccine Doses Administered: **13,416**

Reporting of administered doses is up to 72 hours behind. Counts do not include federal doses provided separately and directly for tribal, VA, and military facilities.

VIEW STATE AND COUNTY VACCINE DISTRIBUTION DATA

Access More Information

WYOMING'S CURRENT COVID-19 VACCINATION PRIORITY GROUP DETAILS

PROVIDER INFORMATION: COVID VACCINE

WYOMING'S ESTIMATED FEBRUARY VACCINE SHIPMENT INFORMATION

PROVIDER INFORMATION: OTHER VACCINES DURING PANDEMIC

Certificates

Medicaid and Kid Care CHIP

Diseases and Conditions

WDH Healthcare Facilities

News



Wyoming
Department
of Health

(307) 777-7656 | (866) 571-0944

[About Us](#) | [Contact Us](#) | [Careers](#)

[Privacy Policy](#)

[Notice of Privacy Practices](#)

[Non-Discrimination Notice](#)

[Map Disclaimer](#)

[Wyoming.gov](#) | [Citizen](#) | [Business](#) | [Government](#) | [Visitor](#)

© 2021, Wyoming Department of Health. All rights reserved.