



Search

[HOME](#) / [DISEASES & CONDITIONS](#) / [COVID-19](#)

## COVID-19



[COVID-19 Numbers](#) | [Alerts](#) | [Directives](#) | [Guidances](#) | [Resources](#) | [CDC Information](#) | [Recursos en Español](#)

### To protect yourself and others, the ADH recommends:

- Wash your hands often with soap and water for at least 20 seconds. Use hand sanitizer when soap and water are not available.
- Practice physical distancing. Avoid close contact with others, especially those who are sick, by keeping at least 6 feet between you and others.
- If you think you have been exposed to COVID-19 or develop a fever, cough, or shortness of breath, seek testing. [Testing is available in many locations](#), including ADH Local Health Units.
- Wear a face covering when you are exposed to non-household members and physical distancing cannot be assured. Click [here](#) to read the requirements.

### Alerts/Updates

Related: Click [here](#) for previous briefings.

- **NEW:** [Directive for Large Outdoor Venue and Large Indoor Venue Plans for School-Sponsored Team Sports](#)
- **NEW:** [COVID-19 Testing Primer](#)
- **NEW:** [Directive on Resuming Elective Procedures, Phase IV](#)
- **NEW:** [Masks are Required Signage](#) | [Spanish](#)
- **UPDATE:** [Directive for Community-School Sponsored Music and Theater Return to Play](#)
- **UPDATE:** [Directive for Community and School Sponsored Team Sports](#)
- **UPDATE:** [How long should quarantine or isolation last?](#)
- **ALERT:** [COVID-19 Guidance for Schools](#) | Resource Call Center 1-833-353-6050
- **ALERT:** [Click here to apply to be a contact tracer](#)
- **ALERT:** [Quarantine required after exposure to COVID-19 even with negative test](#)
- **ALERT:** [Rules Suspended Due to COVID-19 Public Health Emergency Under EO20-06](#)

## Arkansas Department of Health Directives & Orders

August 14: [Directive for Large Outdoor Venue and Large Indoor Venue Plans for School-Sponsored Team Sports](#)

August 5: [Directive for Community-School Sponsored Music and Theater Return to Play](#) (amended August 14, 2020)

August 1: [Directive on Resuming Elective Procedures, Phase IV](#)

July 20: [Directive on Face Coverings](#) | [Information on Executive Order 20-43](#)

June 15: [Directive for Reopening of Casinos Phase II](#)

June 15: [Directive for Gym, Fitness Center, Athletic Club and Weight Room Reopening Phase II](#) (amended June 22, 2020)

June 15: [Directive on Business Limitations Phase II](#)

June 15: [Directive on Resuming Restaurant Dine-in Operations Phase II](#)

June 15: [Directive on Resuming Bar or Club Operations Phase II](#)

June 15: [Directive for Barber Shops, Body Art Establishments, Cosmetology Establishments, Massage Therapy Clinics/Spas, and Medical Spas Phase II](#)

June 15: [Directive Regarding Large Indoor Venues Phase II](#) | To submit an increased capacity proposal for agriculture related events (rodeos, fairs, livestock shows, etc), please click [HERE](#), all other proposals click [HERE](#).

June 15: [Directive Regarding Large Outdoor Venues Phase II](#) | To submit an increased capacity proposal for agriculture related events (rodeos, fairs, livestock shows, etc), please click [HERE](#), all other proposals click [HERE](#).

June 15: [Directive on Resuming Elective Dental Services](#) (revised June 22, 2020)

## Arkansas Department of Health Directives & Orders

June 1: [Directive Regarding Community and School Team Sports](#) (amended Aug. 10, 2020)

May 21: [Directive Regarding Overnight Camps](#)

May 18: [Directive Regarding Summer Day Camps](#)

April 17: [Directive for Approval of Emergency Responder Activities](#)

April 16: [Directive Regarding the Use of Nucleic Acid Amplification Test for the Diagnosis of SARS-CoV-2 Infections in Physician Offices, Urgent Care Settings and Pharmacies](#)

March 26: [Directive for Limitations on Gatherings](#)

March 20: [Directive for Schools, Government, Hospitals, Clinics, Restaurants, Gyms, and More](#)

March 16: [Directive on Extension for EMS License Renewal](#)

March 13: [Directive for Limiting the Transmission of COVID-19 for Long-Term Care Facilities](#)

For a complete list of Directives, click [here](#).

## ADH Guidances

[Public](#)

[Community](#)

[Child Services](#)

[Boards](#)

[Business](#)

[Health Care](#)

## Resources



PPE



Lab Information



Testing Information  
For the Public



Request Testing  
Supplies

- [COVID-19 Fabric Mask Pattern](#)
- [COVID-19 Positive Test Support Groups](#)
- [COVID-19 information for the state of Arkansas](#)
- For immediate quarantine and isolation sheltering needs for homeless or displaced individuals, please call 501-661-2136.
- ADH COVID-19 Call Center: 1-800-803-7847
- [Email the ADH COVID-19 Team](#)
- [ADH news releases](#)
- Click [here](#) for more resources

## COVID-19 Numbers

Updated as of 8/20/2020, 2:08 p.m.

*\*these data are provisional and subject to change. Updates are made once a day.*

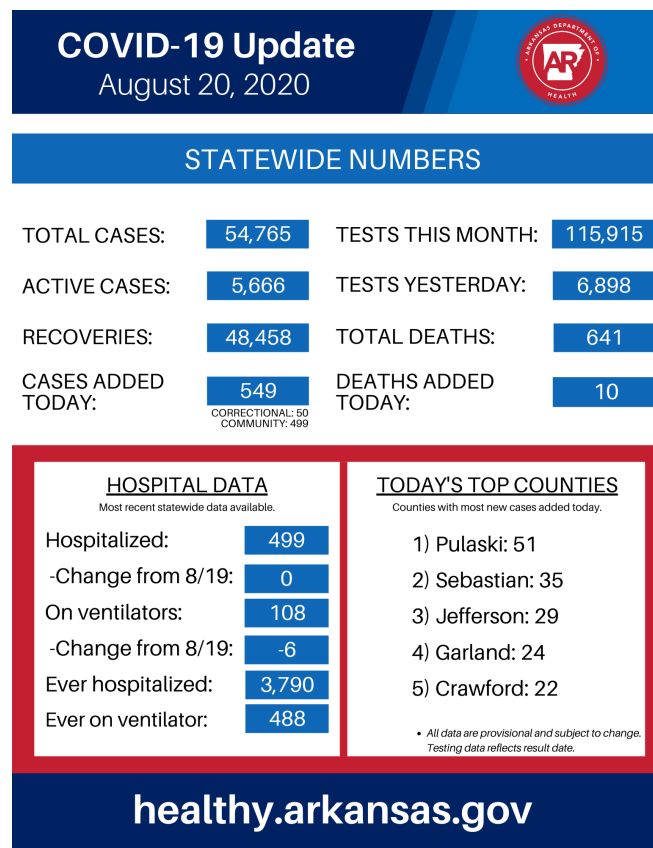
Click the Status Update Button Below for More Detailed Information

*\*These data are provisional and subject to change. Updates are made once a day.*

# ADH COVID-19 Status Updates

**\*\*For best performance, please avoid using Internet Explorer**

You need javascript enabled to view this content or go to [source URL](#).



## Charts

- [COVID-19 Weekly active cases report as of August 20, 2020](#)
- [COVID-19 Hospitalizations as of August 19, 2020](#)
- [COVID-19 Testing Data as of August 19, 2020](#)

ADH has activated a call center to answer questions from health care providers and the public about the novel coronavirus. During normal business hours (8:00am – 4:30pm), urgent and non-urgent calls, please call 1-800-803-7847 or [email us](#).

Click [here](#) for a list of Local Health Units that are partially or fully closed. All other health units not listed are fully open. The list is subject to change on a day to day basis.

You need javascript enabled to view this content or go to [source URL](#).

## DISEASES & CONDITIONS

### COVID-19 ▼

COVID-19 Contact Tracing

COVID-19 County Data

COVID-19 Directives, Orders, & Health Guidances

COVID-19 Recursos en Español

COVID-19 Guidance for Behavioral and Mental Health ▼

COVID-19 Guidance About Chloroquine

COVID-19 Guidance for Dentists

COVID-19 Guidance for Employers

COVID-19 Guidance for EMS

COVID-19 Guidance for Getting Tested

COVID-19 Guidance for Healthcare Providers

COVID-19 Guidance for High Risk Individuals

COVID-19 Guidance for Homeless Shelters and Services

COVID-19 Guidance for Orthotists, Prosthetists, and Pedorthists

COVID-19 Guidance for Pharmacies

COVID-19 Guidance for Places of Worship

COVID-19 Guidance for Self Home Quarantine

COVID-19 Guidance for Travelers

COVID-19 Media Library

COVID-19 Resources

### ARCHES Survey

Blood Pressure (Hypertension) ▼

Cancer ▼

Communicable Diseases ▼

Diabetes ▼

Diseases from Animals & Insects ▼

Epidemiology

Healthcare-Associated Infections (HAI) ▼

Heart Disease ▼

Infectious Disease ▼

Stroke ▼

Tuberculosis



Certificates & Records



Licensing, Permits & Plan Reviews



Public Health Safety



Community, Family & Child Health



Data, Statistics & Registries



Emergencies & Disasters



Prevention & Healthy Living



Boards & Committees



Diseases & Conditions



[ADH Home](#) [Accessibility Policy](#) [Privacy Policy](#) [Disclaimer](#) [ADH HIPAA](#)

© 2017 Arkansas Department of Health. All Rights Reserved. [www.healthy.arkansas.gov](http://www.healthy.arkansas.gov)

4815 W. Markham, Little Rock, AR 72205-3867

1-800-462-0599

For information, inquiries, feedback and comments contact  
us.