

Home

COVID-19 in Colorado

LPHAs & healthcare providers

Public health & executive orders

Case data

News

State recovery & assistance



Department of Public Health & Environment



COLORADO
State Emergency
Operations Center

Search

Information on the Outbreak of COVID- 19

The Colorado Department of Public Health and Environment is working closely with the Centers for Disease Control and Prevention (CDC), our Local Public Health Agencies (LPHA) and our communities to provide updated information about COVID-19 (Coronavirus Disease 2019).

[Cases in Colorado: Data Visualization](#)

Data is updated daily by about 4 p.m.

- [About COVID-19](#)
- [Telehealth & nurselines](#)
- [Testing](#)
- [Prevention & community spread](#)
- [Isolation & quarantine](#)
- [Recommendations for schools, workplaces, & the community](#)
- [Frequently asked questions](#)
- [Public health & executive orders explained](#)
- [Resources for local public health agencies & health care providers](#)

Do I need to isolate or quarantine?



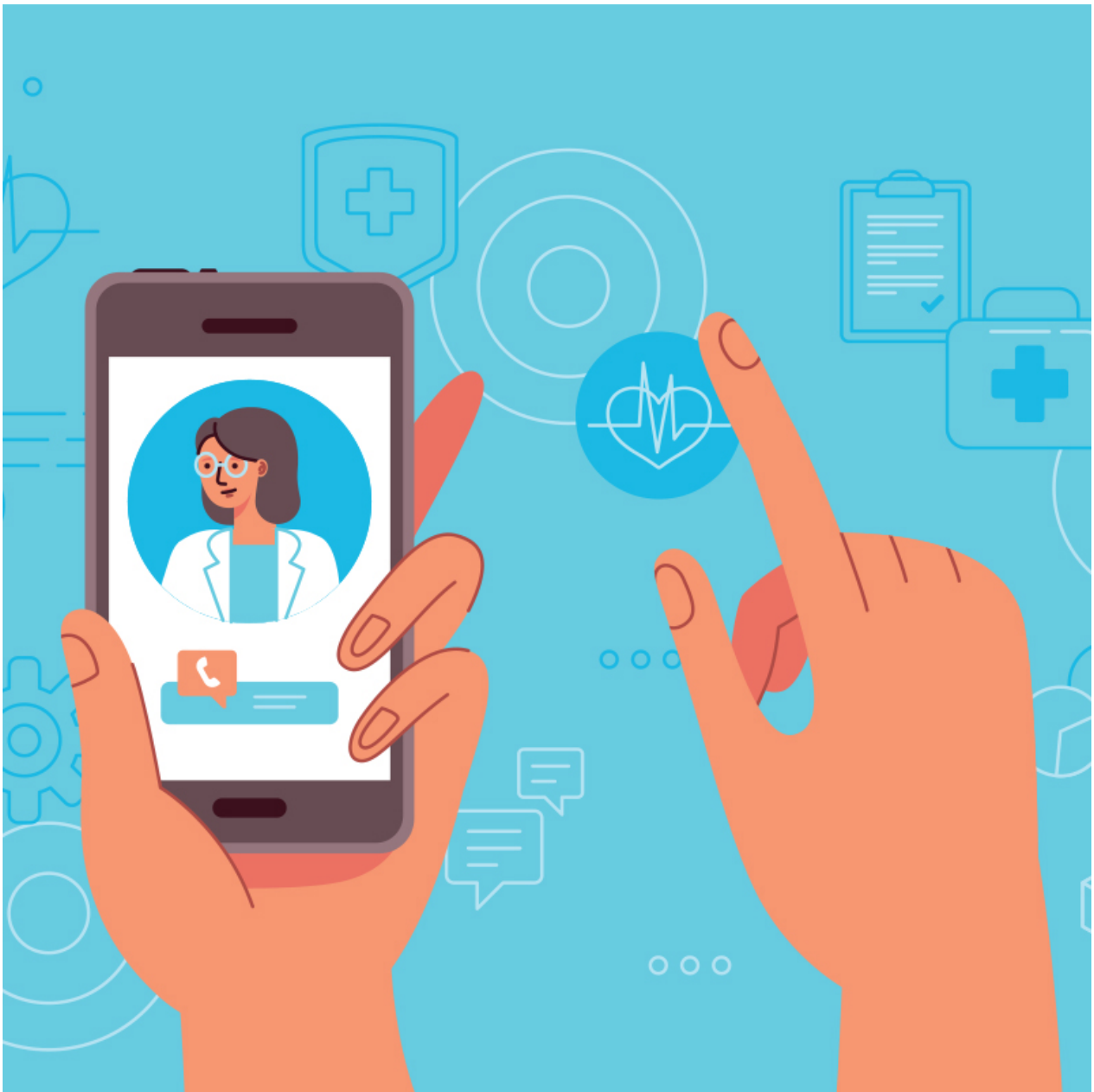
Should I call 911?

[Guidance on closures & cancellations](#)

[Do I need to be tested?](#)

[I have symptoms of COVID-19](#)

The latest



Telehealth

Why should you use telehealth?

If you have COVID-19 symptoms (fever, cough, shortness of breath), consider a telehealth visit or nurseline advice before seeking in-person care.



High risk populations

What older adults and families need to know about COVID-19

Learn how you can protect Colorado's most vulnerable populations at higher risk for serious illness from COVID-19, including people over age 60 and those with chronic medical conditions.



Stay-at-home order

What does the Stay-at-Home order mean for you and your business?

The order is intended to minimize contact between people and potentially contaminated surfaces as much as possible to slow the spread of disease, reduce the number of people who become severely ill or die, and protect our health care system.

Colorado is on a statewide Stay-at-Home order.

[Read the executive order](#) >

[Read the public health order](#) >

[Frequently asked questions](#) >

[Watch the press conference](#) >


[Learn about the order & exemptions](#)


[Critical business self-certification](#) 📄 (voluntary and is not required)

Contact

2-1-1 Colorado

2-1-1 is a confidential and multilingual service connecting people to vital resources across the state. No matter where you live in Colorado, you can find information about resources in your local community.


 [Live chat](#)

 Call 2-1-1 or (866) 760-6489

 Text your ZIP CODE to 898-211

CO-HELP

Colorado's call line for general questions about COVID-19, provides answers in many languages including English, Spanish (Español), Mandarin (普通话) and more. CO-HELP operators cannot recommend whether or where you get tested, provide medical advice or help you with your prescriptions. They cannot provide testing results. They cannot clear you to go to work. If you are seeking help for anything other than general questions, please try telehealth or health care provider.

 Call 303-389-1687 or (877)-462-2911

Looking for information in other languages?

We have fact sheets and public health guidance available for the following languages:

[Vietnamese](#) 

[Spanish](#) 

[Somali](#) 

[Simplified Chinese](#) 



Colorado Volunteer Mobilizer (CVM) for Medical and Public Health Professionals.

Your involvement as a volunteer will help ensure that people or animals affected by a disaster will receive the public health and medical care they need. Registration in the on-line database is your first step in meeting this

urgent need within Colorado and the nation.

[Register to volunteer >](#)

✓ Colorado COVID-19 Public Survey Results

MARCH 28, 2020

State health department releases survey results showing attitudes about COVID-19

DENVER, March 28, 2020: The Colorado Department of Public Health and Environment (CDPHE) released results from a survey asking Coloradans about their perceptions and attitudes related to the COVID-19 pandemic. Nearly 45,000 Coloradans completed the survey between March 22 and March 24, 2020.

MARCH 26, 2020

State health department distributes testing kits to Larimer, Mesa, and El Paso counties for health care workers and first responders

This testing strategy helps strengthen medical capacity through early identification of health care workers and first responders who may test positive for COVID-19.

MARCH 26, 2020

State health department enacts public health order as a critical measure to save lives

Colorado must act now to “flatten the curve” of increased cases, which will help hospitals to prepare for the expected surge of COVID-19 patients.

[View All](#)

Contact




Colorado Crisis Services

We provide free, confidential, professional and immediate support for any mental health, substance use or emotional concern, 24/7/365.

Call 1-844-493-TALK (8255) or text TALK to 38255 to speak to a trained professional.
coloradocrisiservices.org

211 Colorado

2-1-1 is a confidential and multilingual service connecting people to vital resources across the state.

 [Live chat](#)  Call 2-11 or (866) 760-6489  Text your ZIP CODE to 898-211

CO-HELP

Colorado's call line for general questions about the novel coronavirus (COVID-19), providing answers in many languages including English, Spanish (Español), Mandarin (普通话) and more.

 Call 303-389-1687 or (877) 462-2911

CDPHE Information

Media line (for media only): 303-900-2849

[CDPHE main website](#)

[Colorado Emergency Management](#)

[Register to volunteer](#)

[Help Colorado Now](#) 

[Request a website change](#)

If you have symptoms and think you have been exposed, call a health care provider.

Follow us

CDPHE



Colorado Emergency Management



Available languages

[Español](#) (Spanish) | [Tiếng Việt](#) (Vietnamese)

[Somali](#) | [中文](#) (Simplified Chinese)

[Transparency](#)

© 2019 State of Colorado |

[Online](#)

| [Accessibility](#)

| [Privacy Statement](#)

| [Security Statement](#)

