



COLORADO
Department of Public
Health & Environment



COLORADO
State Emergency
Operations Center

Search



[Colorado COVID-19 Updates](#) > [Case data](#)

Case data

Home	
About COVID-19	>
Do you have symptoms?	>
Prevent the spread of COVID-19	
Isolation & quarantine	>
Public health & executive orders	>
Reducing fear and stress	>
Guidance for schools, workplaces, & communities	
LPHAs and health care providers	>
General Questions and Answers	
Communication resources	>
Laboratory services (external link)	
State recovery & assistance	>
Blog	
Data	>

Data is updated daily by about 4 p.m. and includes cases reported through the previous day. This reporting gap gives our epidemiologists time to review the data and improve the accuracy. Due to this delay, our numbers may be different than what is being reported by local public health departments. As cases continue to be investigated the data in this report is subject to change.

10,447

Cases*

2,003

Hospitalized

56

Counties

48,704

People tested**

119

Outbreaks

486

Deaths

Last update: April 21, 2020 | 4 p.m.

Note: This summary only includes data through 4/20 and does not reflect cases since then.

*The number of cases includes people who have had a test that indicated they were positive for COVID-19. The number of cases also includes epidemiologically-linked cases -- or cases where public health epidemiologists have determined that infection is highly likely because a person exhibited symptoms and had close contact with someone who tested positive. The number of epidemiologically-linked cases represents a very small portion of the reported cases.

**The total number of people tested may not include all negative results.

[Find Colorado COVID-19 Data on CDPHE's Open Data Portal](#)

[Access the case summary data files](#)

[Learn more about our data](#)

[View our outbreak data](#)

[Case data](#)

[About the graphs](#)

COVID - 19 Colorado Case Summary



Data is updated daily by about 4 p.m. and includes cases reported through the previous day.

10,447
Cases

2,003
Hospitalized

56
Counties

48,704*
People Tested

486
Deaths

1
Outbreaks

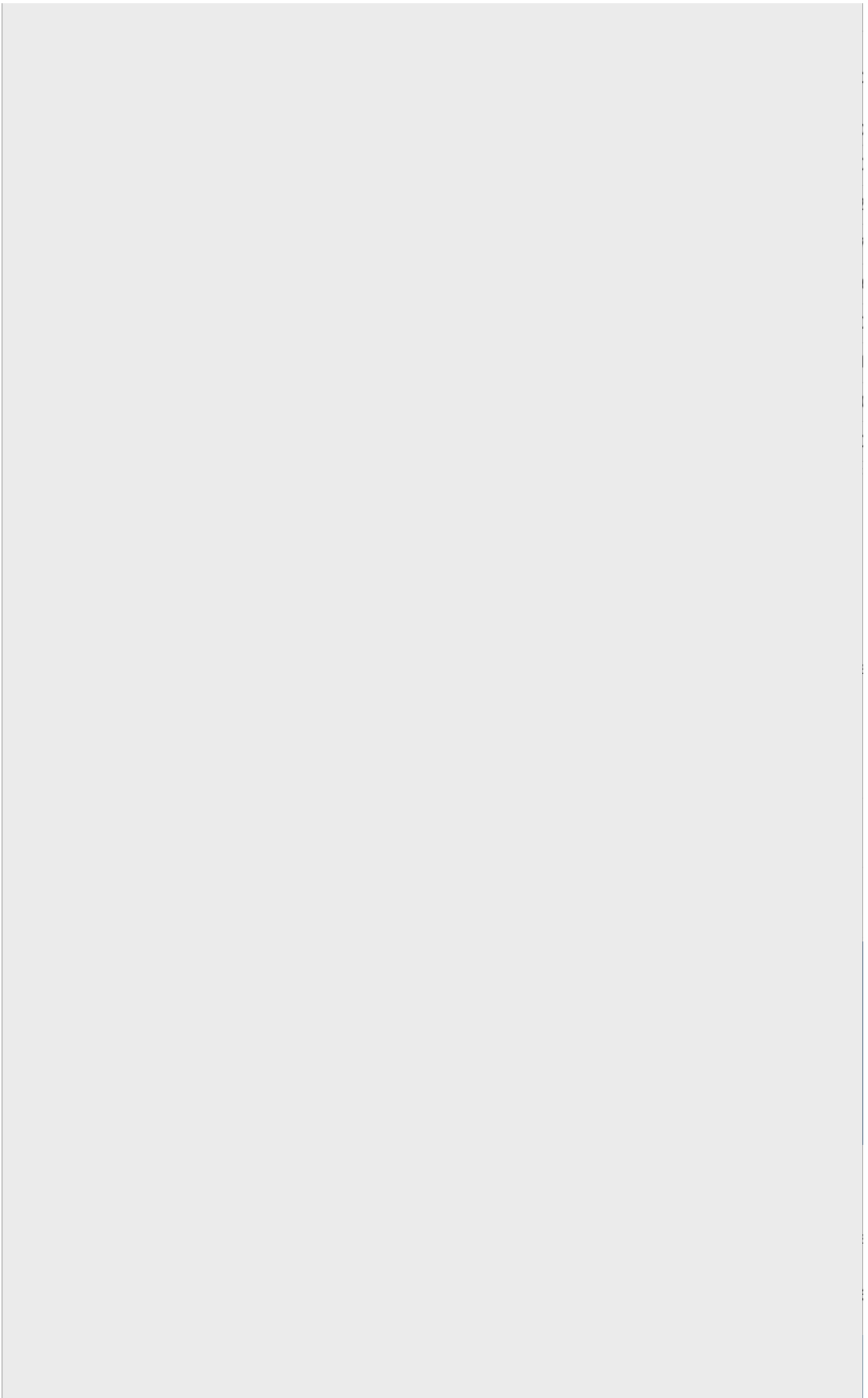
* May not include all negative results

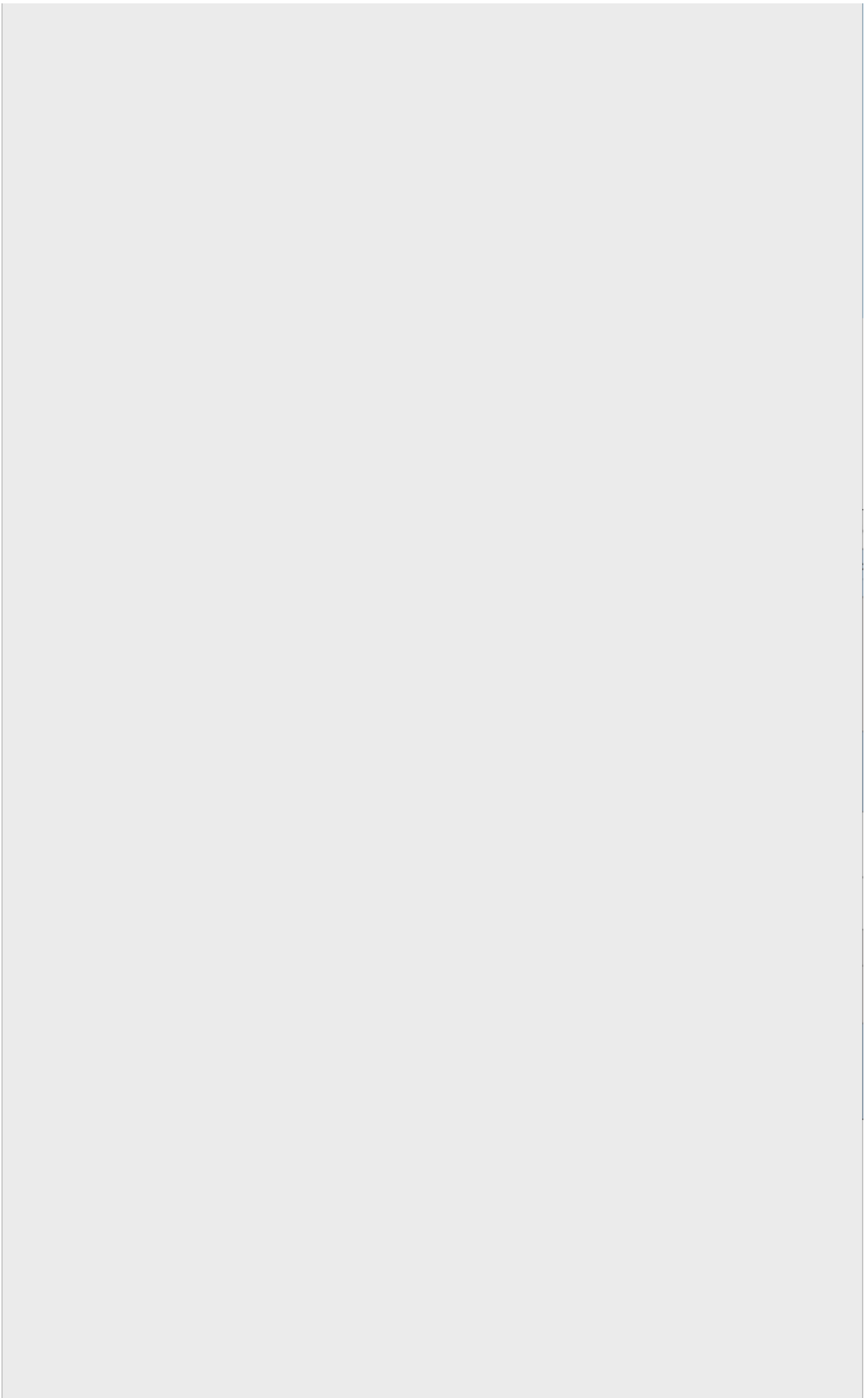
Colorado Case Counts by County

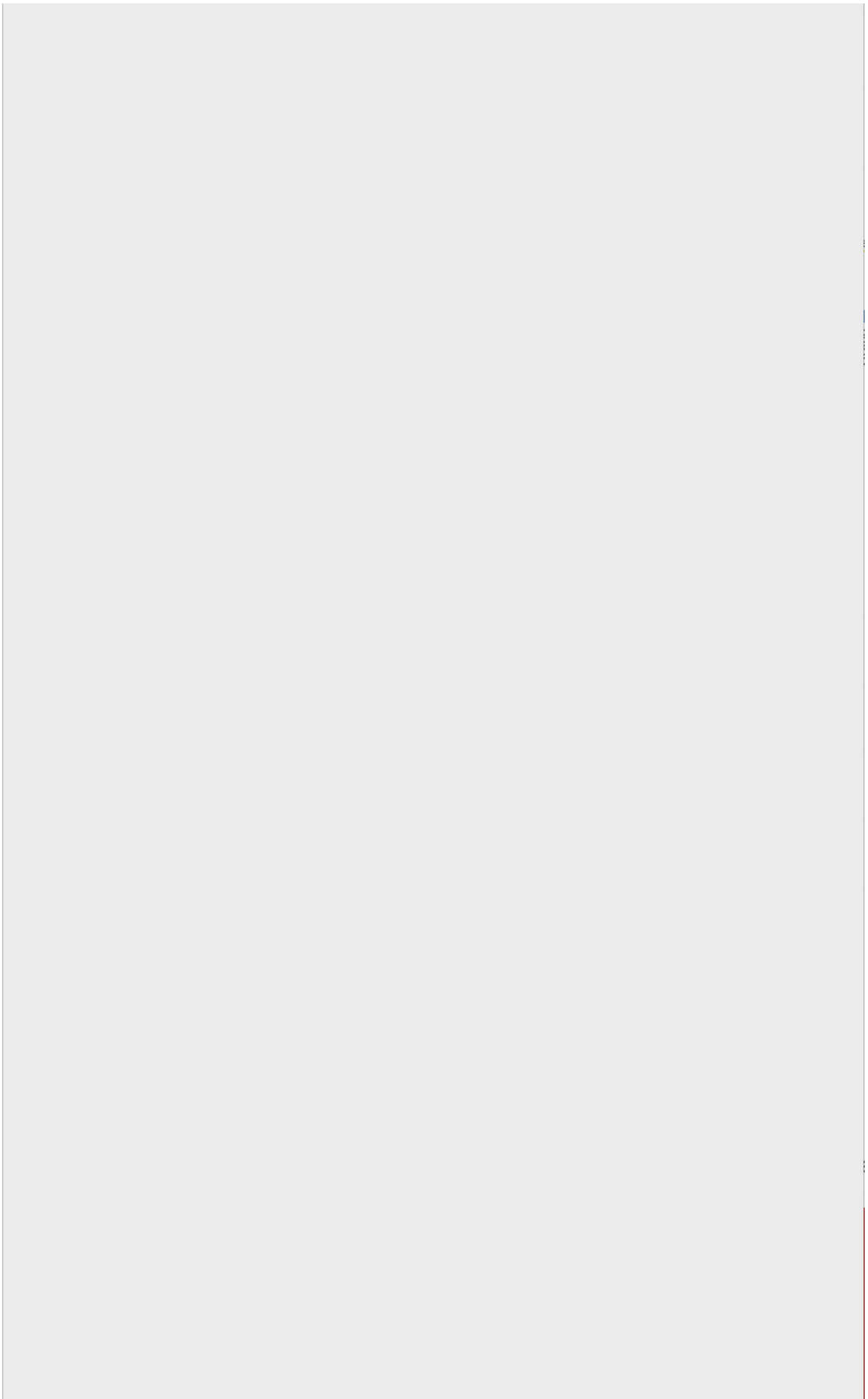
Adams	996	La Plata	51
Alamosa	9	Lake	8
Arapahoe	1,649	Larimer	250
Archuleta	7	Las Animas	3
Baca	10	Lincoln	3
Bent	0	Logan	23
Boulder	390	Mesa	35
Broomfield	106	Mineral	2
Chaffee	38	Moffat	6
Cheyenne	0	Montezuma	13
Clear Creek	11	Montrose	80
Conejos	0	Morgan	180
Costilla	3	Otero	7
Crowley	2	Ouray	5

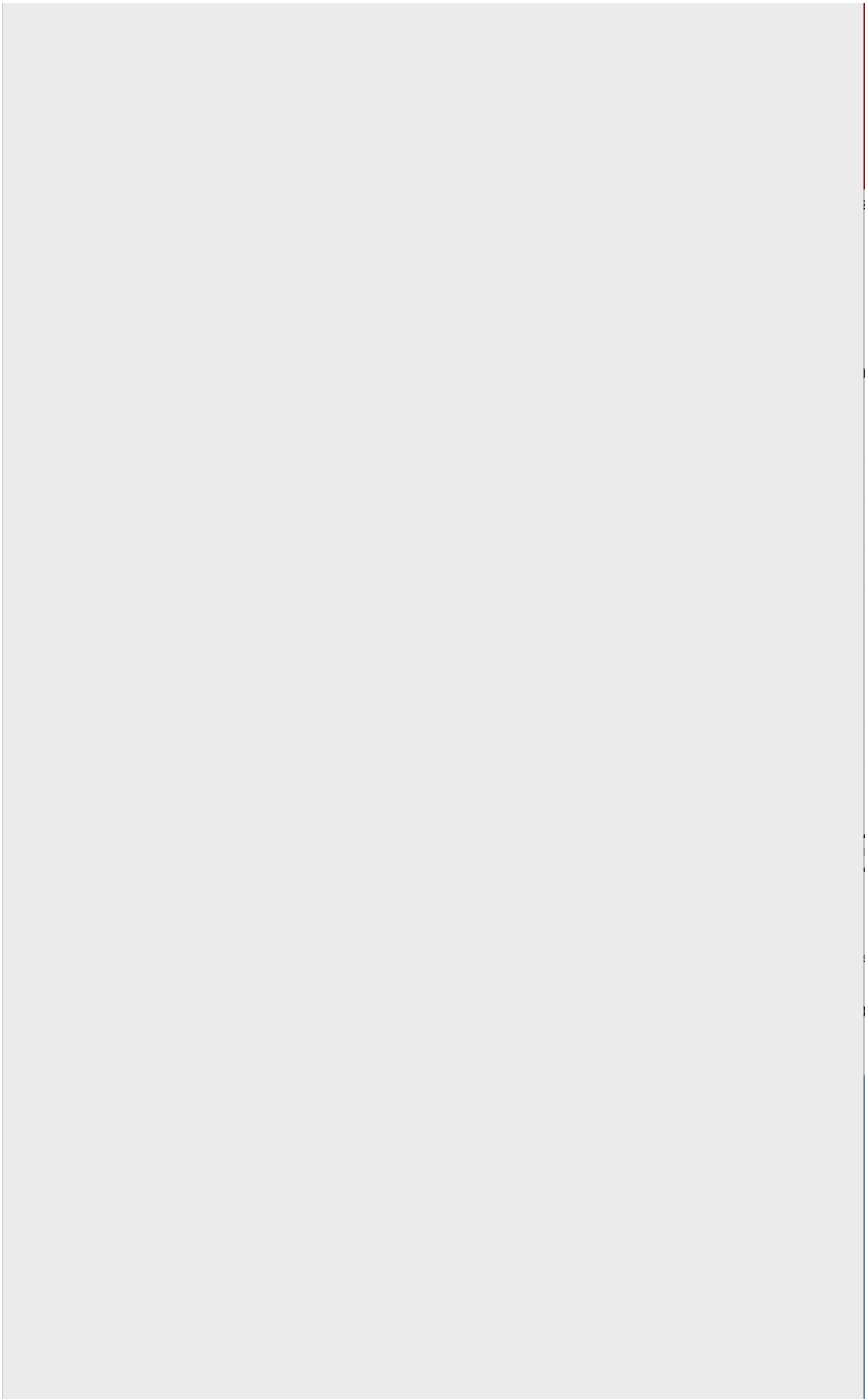
COVID-19 in Colorado by Age

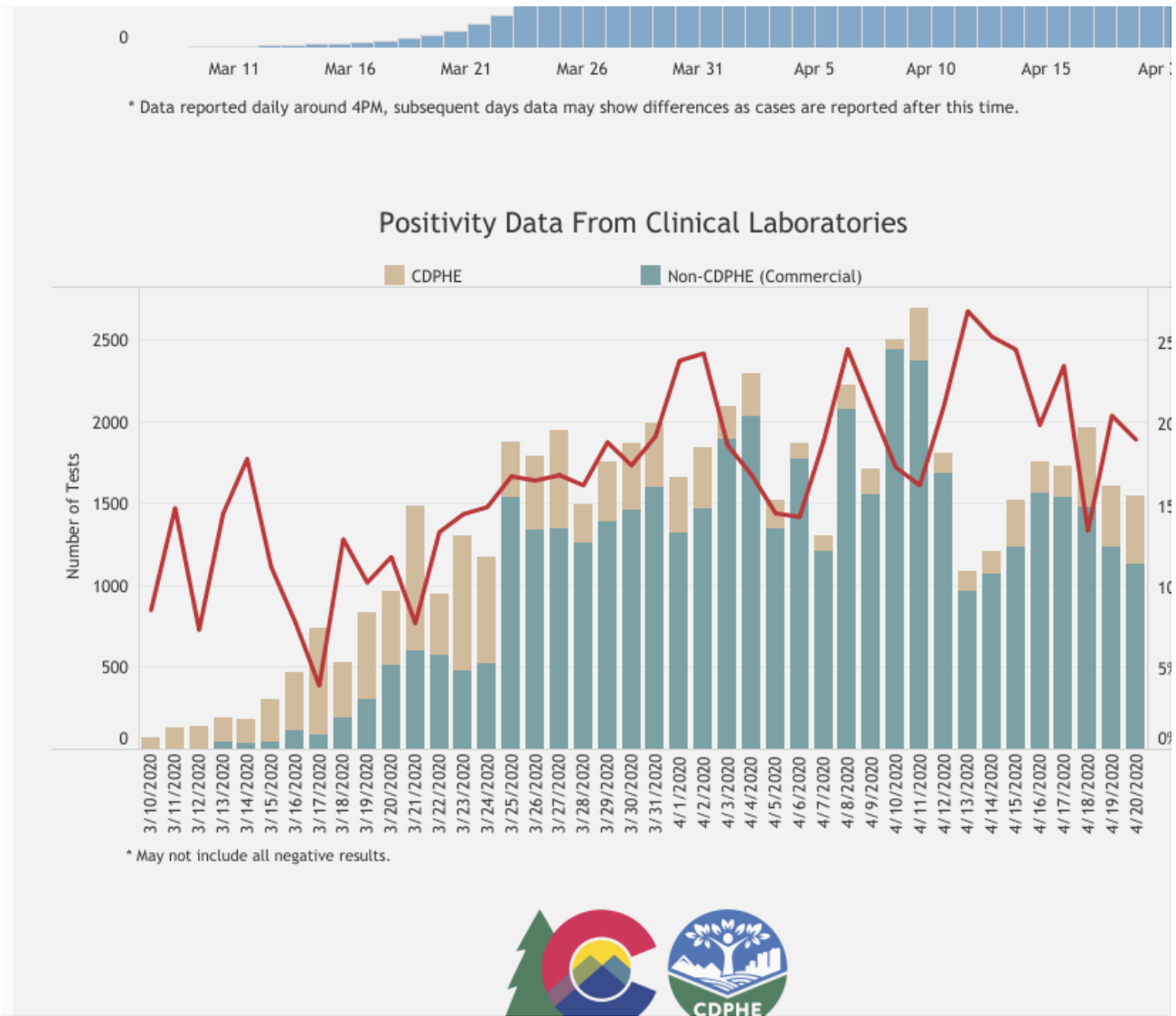
	Cases	Deaths
0-9	1.12%	0.00%
10-19	2.37%	0.00%
20-29	13.24%	0.82%
30-39	16.25%	0.41%
40-49	16.40%	3.09%
50-59	17.94%	5.76%
60-69	14.29%	13.37%
70-79	9.62%	25.10%
80+	8.39%	51.44%











Colorado cases & deaths by county

*People who tested positive for COVID-19 in Colorado while visiting are included in the county where they were identified

(Updated at 4 p.m. on 4/21)

County	Positive cases	Deaths
Adams	996	46
Alamosa	9	2
Arapahoe	1,649	80
Archuleta	7	
Baca	10	
Boulder	390	18
Broomfield	106	2
Chaffee	38	4
Clear Creek	11	1

Costilla	3	
Crowley	2	1
Custer	2	
Delta	25	1
Denver	2,004	91
Douglas	384	17
Eagle	487	7
El Paso	744	53
Elbert	24	1
Fremont	11	
Garfield	71	2
Gilpin	1	
Grand	5	
Gunnison	121	3
Hinsdale	3	
Huerfano	1	
Jefferson	1,011	40
Kit Carson	18	1
La Plata	51	
Lake	8	
Larimer	250	13
Las Animas	3	
Lincoln	3	
Logan	23	1
Mesa	35	
Mineral	2	
Moffat	6	
Montezuma	13	2
Montrose	80	9
Morgan	180	4
Otero	7	

Ouray	5	1
Park	6	
Philips	5	
Pitkin	58	2
Prowers	1	
Pueblo	92	7
Rio Blanco	1	
Rio Grande	7	
Routt	51	2
Saguache	3	
San Miguel	17	
Summit	88	1
Teller	25	2
Washington	6	
Weld	1,180	69
Yuma	3	
*Unknown or pending	105	1
Out of state		2
Total	10,447	449

Contact

Colorado Crisis Services

We provide free, confidential, professional and immediate support for any mental health, substance use or emotional concern, 24/7/365.

Call 1-844-493-TALK (8255) or text TALK to 38255 to speak to a trained professional.

211 Colorado

2-1-1 is a confidential and multilingual service connecting people to vital resources across the state.

☎️ Call 2-11 or (866) 760-6489 📱 Text your ZIP CODE to 898-211

CO-HELP

Colorado's call line for general questions about the novel coronavirus (COVID-19), providing answers in many languages including English, Spanish (Español), Mandarin (普通话) and more.

☎️ Call 303-389-1687 or (877) 462-2911

Media line (for media only): 303-900-2849

[CDPHE main website](#)

[Colorado Emergency Management](#)

[Stay at home Colorado guide](#)

[Help Colorado Now](#) - Volunteer, donate, contribute, apply for funding.

[State resource for COVID-19 information](#)

[OnwardCO.org](#) - One-stop resource for Coloradans impacted by job loss to connect with life essentials, training, and jobs.

[Request a website change](#)

If you have symptoms and think you have been exposed, call a health care provider.

Follow us

CDPHE



Colorado Emergency Management



Available languages

[Español](#) (Spanish) | [Tiếng Việt](#) (Vietnamese) |

[Soomaali](#) (Somali) | [中文](#) (Simplified Chinese) |

[العربية](#) (Arabic) | [नेपाली](#) (Nepali)

[Transparency](#)

© 2020 State of Colorado |

[Online](#)

| [Accessibility](#)

| [Privacy Statement](#)

| [Security Statement](#)



2.1k
Shares

