

COVID-19 Update April 1, 2020

As of **April 1, 2020**, a total of **3557** laboratory-confirmed cases of COVID-19 have been reported among Connecticut residents (Figure 1). **Seven hundred and sixty-six** patients are currently hospitalized. **Eighty-five** residents have died. All data in this report are preliminary; data for previous dates will be updated as new reports are received and data errors are corrected. Hospitalization data were collected by the Connecticut Hospital Association. Deaths reported to the either the OCME or DPH are included in the daily COVID-19 update.

OVERALL SUMMARY		
	Total	Change Since Yesterday
Laboratory-Confirmed COVID-19 Cases	3557	+429
Laboratory-Confirmed COVID-19 Deaths	85	+16
Patients Currently Hospitalized with COVID-19	766	+158
Patients tested for COVID-19	16600	+1000

Laboratory-Confirmed COVID-19 Cases and Deaths by County of Residence in Connecticut

As of 4/1/20 1:30PM. Includes patients tested at the State Public Health Laboratory, hospital, and commercial laboratories.

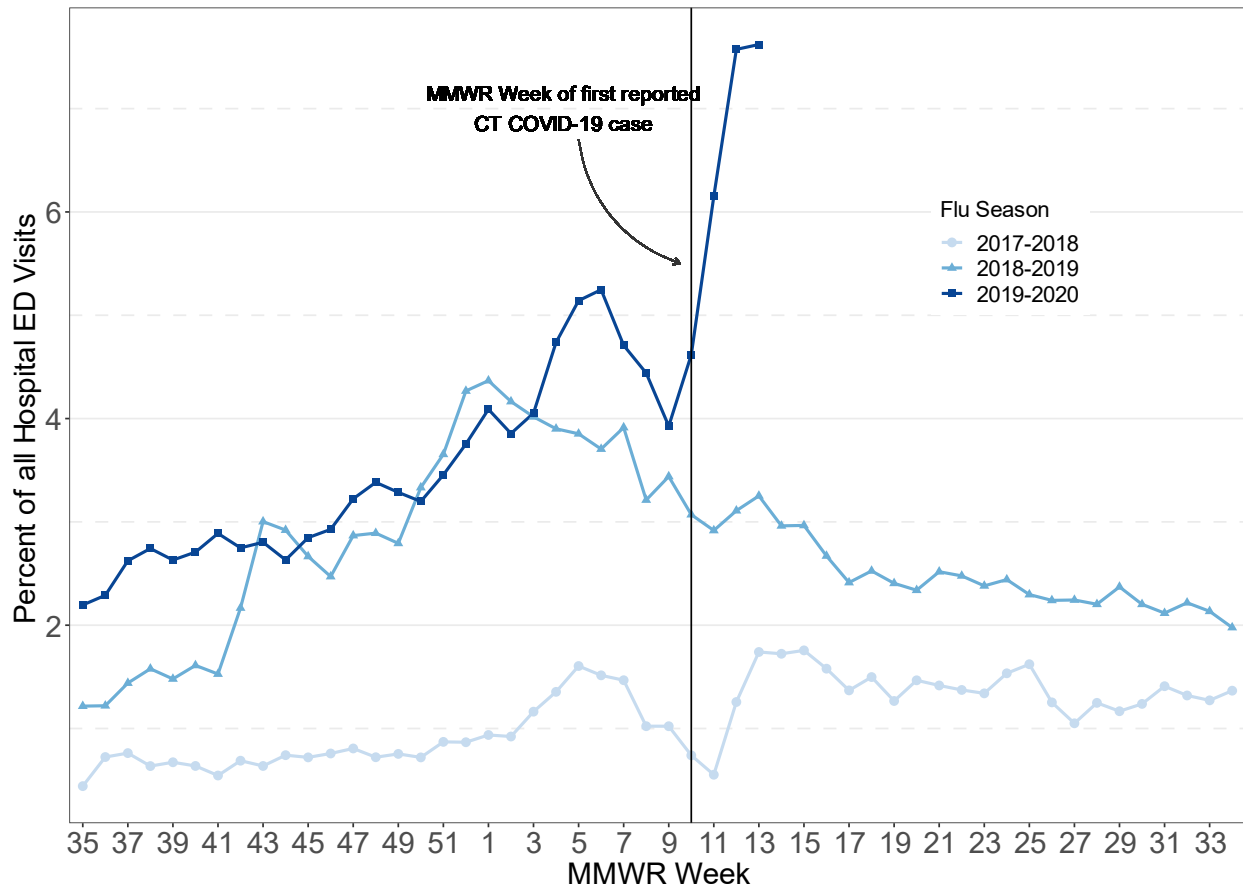
County	Laboratory Confirmed Cases	Deaths
Fairfield County	1986	46
Hartford County	469	11
Litchfield County	131	1
Middlesex County	66	2
New Haven County	611	15
New London County	29	1
Tolland County	61	7
Windham County	19	0
<i>Pending address validation</i>	<i>185</i>	<i>2</i>
Total	3557	85

[National COVID-19 statistics](#) and information about [preventing spread of COVID-19](#) are available from the Centers for Disease Control and Prevention.

A weekly report on seasonal influenza activity can be found on the [DPH website](#).

Syndromic Surveillance

The Department of Public Health EpiCenter hospital emergency department (ED) syndromic surveillance system receives near real-time information from all 38 licensed, hospital EDs in Connecticut. The percentage of individuals seeking care for “unexplained fever/flu” syndrome ED visits is monitored to identify individuals that may have symptoms consistent with COVID-19; this differs from the “fever/flu” syndrome in the weekly influenza report since patients with a known diagnosis (e.g., influenza, strep throat) are not included. **The syndromic surveillance systems suggest that many more people are seeking care for respiratory illnesses, including COVID-19, than usual at this time.**

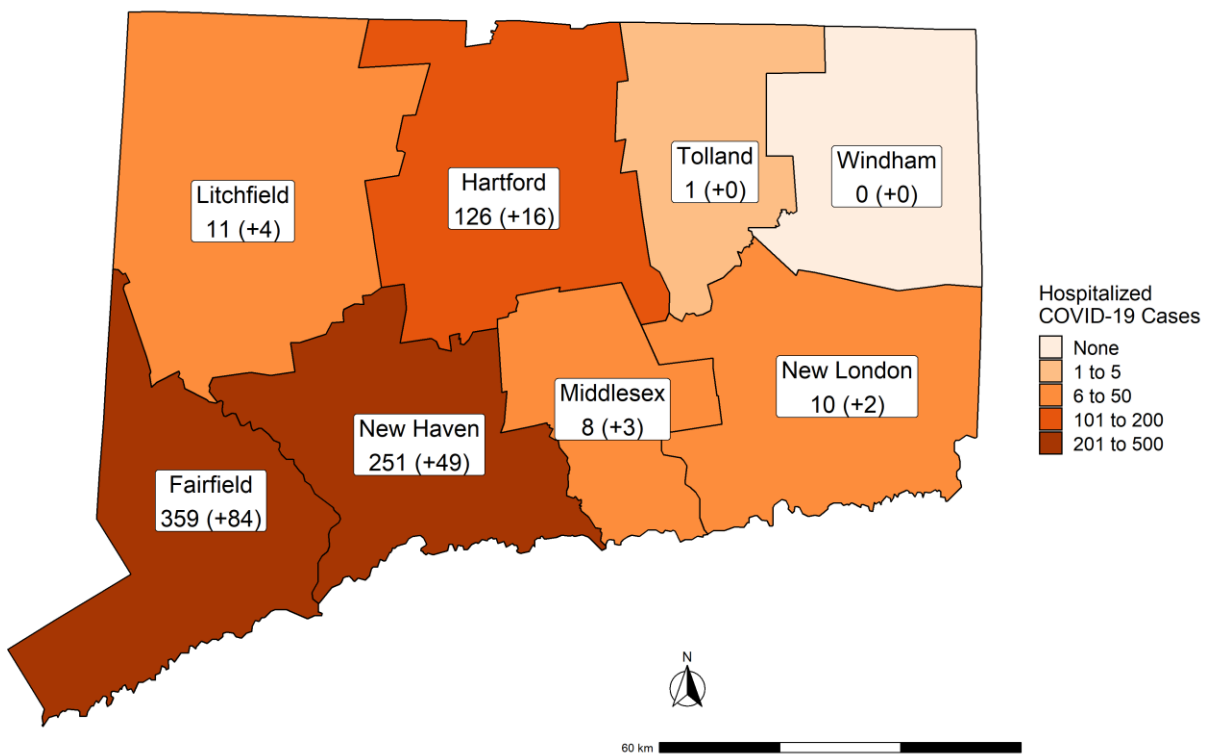


Hospitalization Surveillance

The map below shows the number of patients currently hospitalized with laboratory-confirmed COVID-19 by county based on data collected by the Connecticut Hospital Association. The distribution is by location of hospital, not patient residence. The labels indicate the number of patients currently hospitalized with the change since yesterday in parentheses.

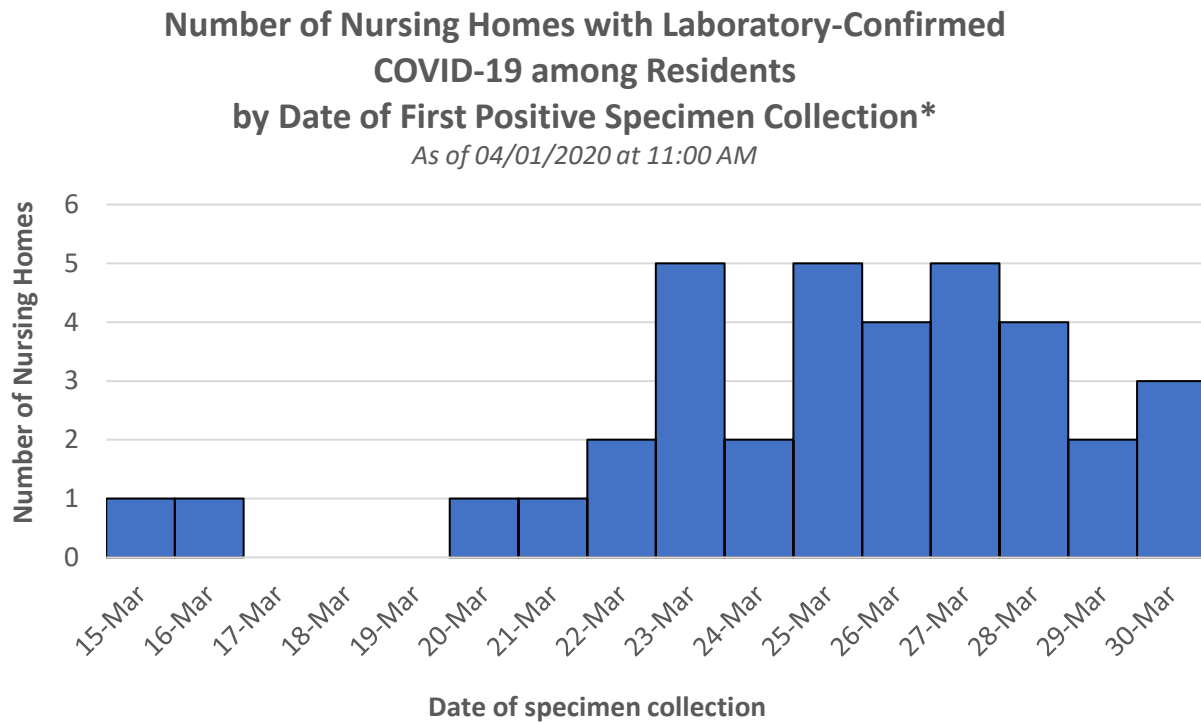
Patients Currently Hospitalized by Connecticut County

Distribution by location of hospital not patient residence. Data from the Connecticut Hospital Association.



Nursing Home Surveillance

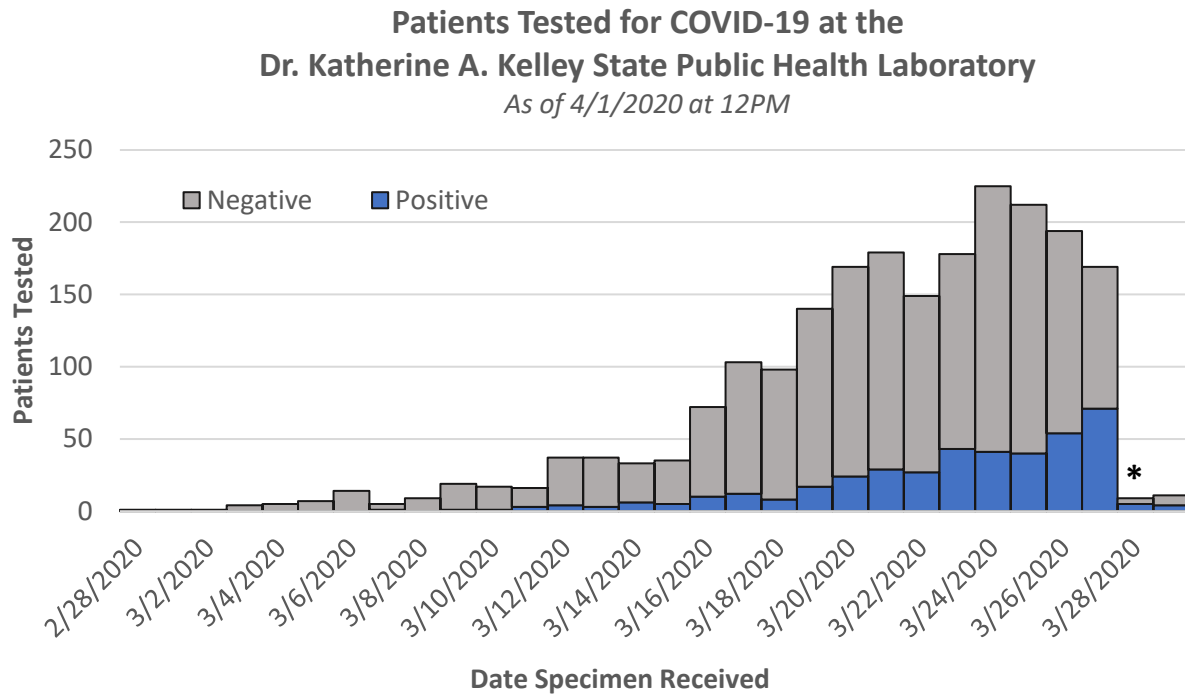
Among **216** nursing homes in CT, **36 (17%)** have had at least one confirmed case of COVID-19. A total of **124** nursing home residents with laboratory-confirmed COVID-19 have been identified of whom **52 (42%)** were hospitalized and **13 (11%)** have died. The graph below shows the number of nursing homes with laboratory confirmed COVID-19 cases by the first date a positive specimen was collected.



**Test results may be reported several days after the result. Data from previous days are routinely updated.*

Laboratory Surveillance

The Dr. Katherine A. Kelley State Public Health Laboratory has tested a total of **2116** patients for COVID19; **405 (19%)** patients tested positive. The graph below shows the number of patients tested by date specimens were received. Hospital and commercial laboratories also are offering testing for COVID-19 in Connecticut; in total, more than **16600** tests have been reported to date.

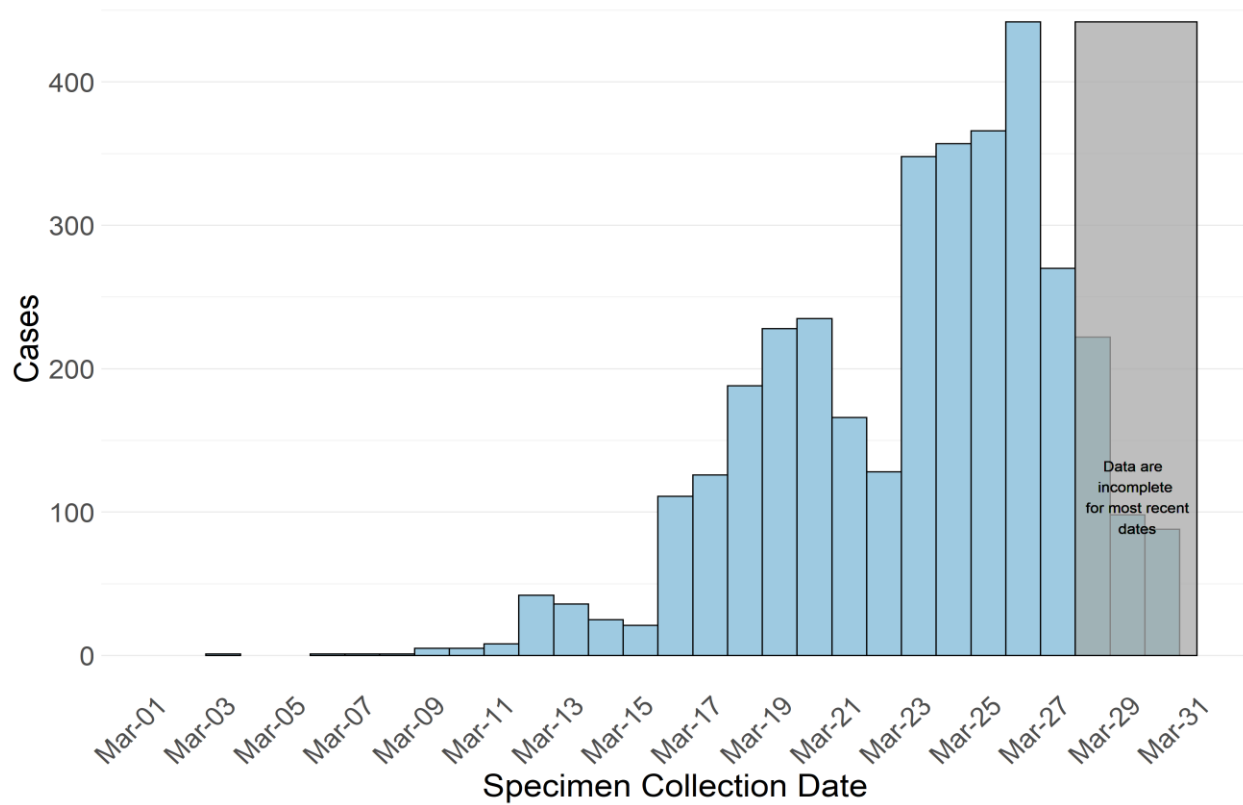


**Testing of specimens received since March 28 is on-going and does not reflect a decrease in testing.*

Characteristics of Laboratory-Confirmed COVID-19 Cases and Deaths

Number of Laboratory-confirmed COVID-19 Cases by Date of Specimen Collection

As of 04/01/2020 at 12:30pm

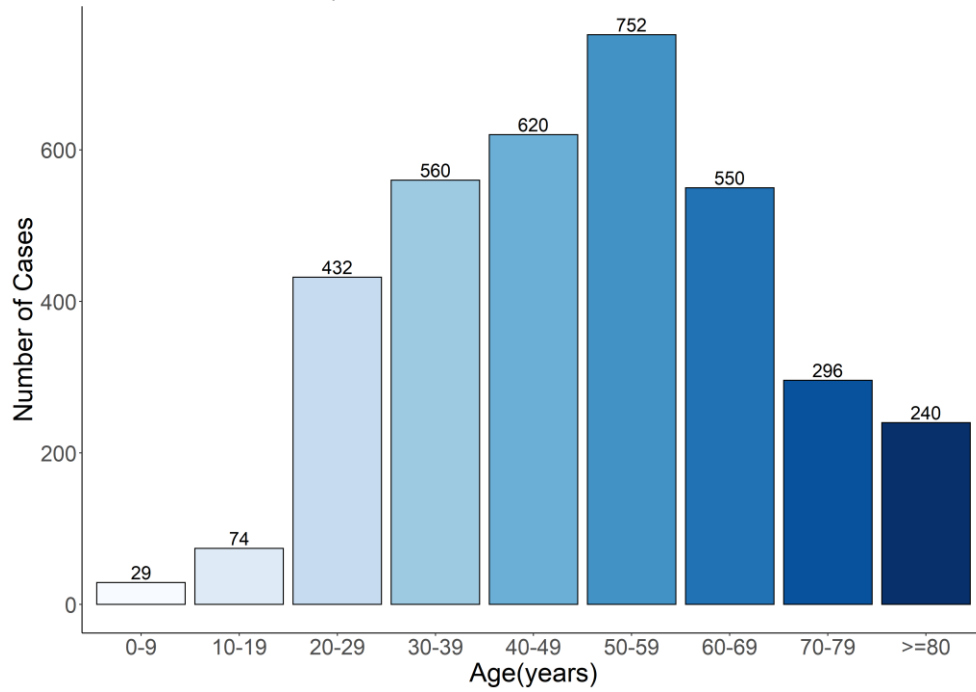


**Test results may be reported several days after the result. Data from previous days are routinely updated.*

Counts may not add up to total case count as demographic data may be missing.

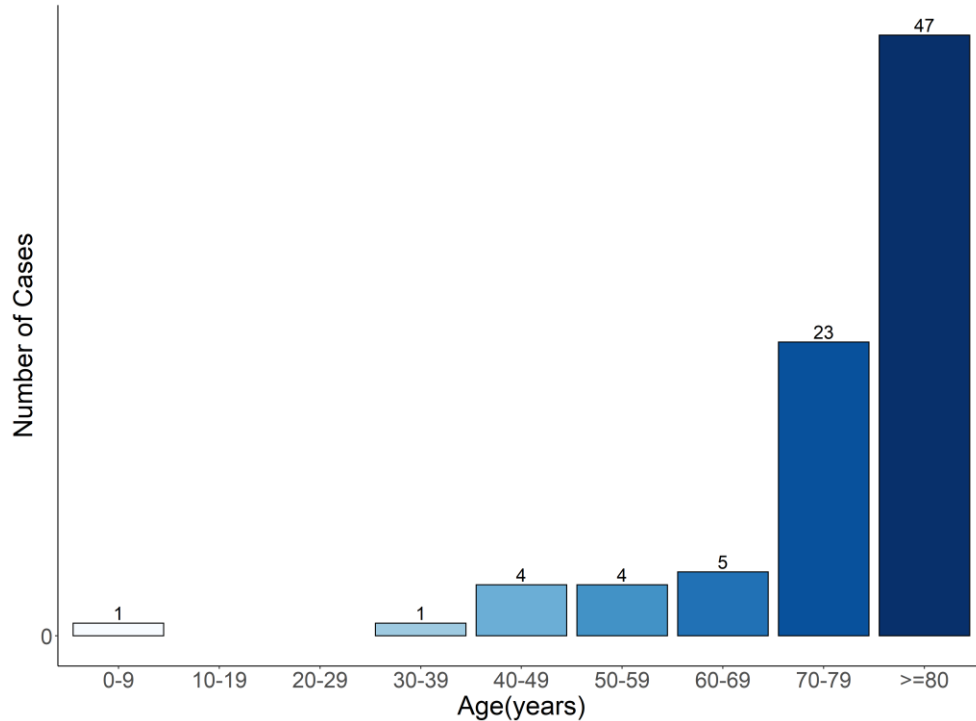
Number of Laboratory-Confirmed COVID-19 Cases per Age Group

As of 04/01/2020 at 12:30pm



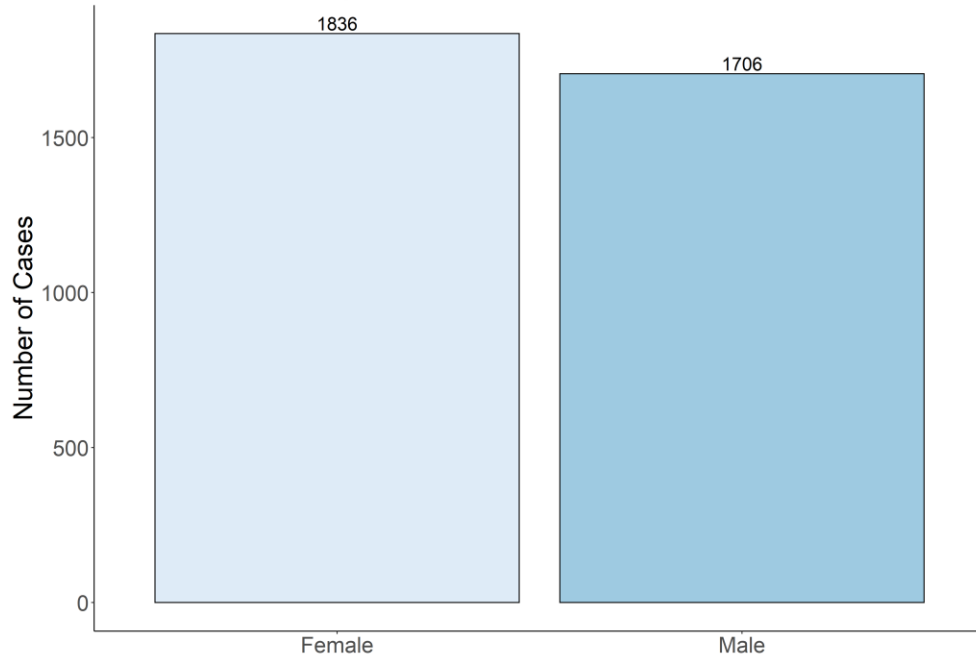
Number of Laboratory-Confirmed COVID-19 Deaths by Age Group

As of 04/01/2020 at 12:30pm



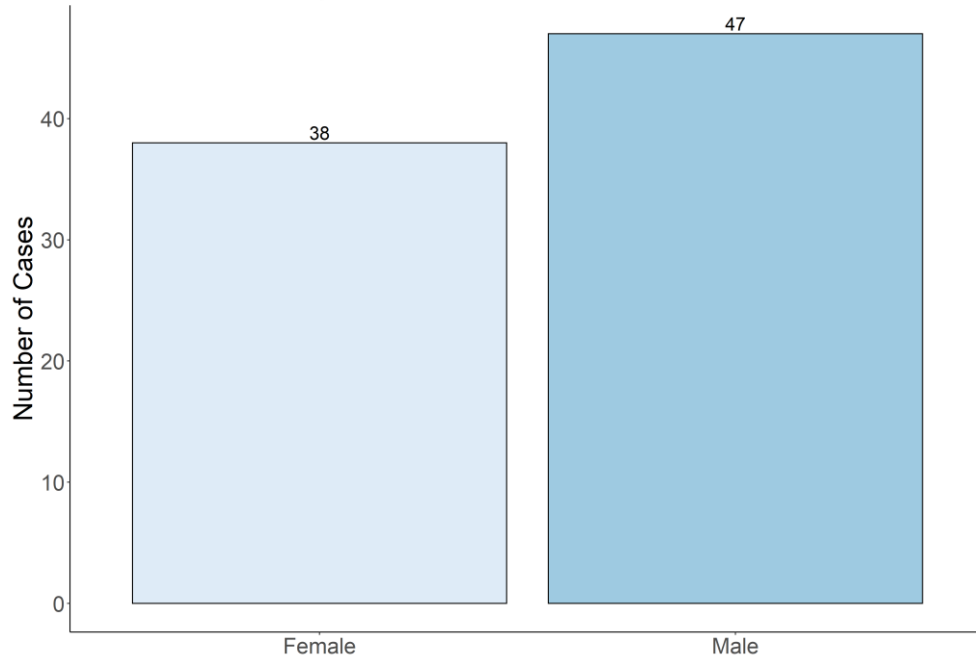
Number of Laboratory-Confirmed COVID-19 Cases by Gender

As of 04/01/2020 at 12:30pm



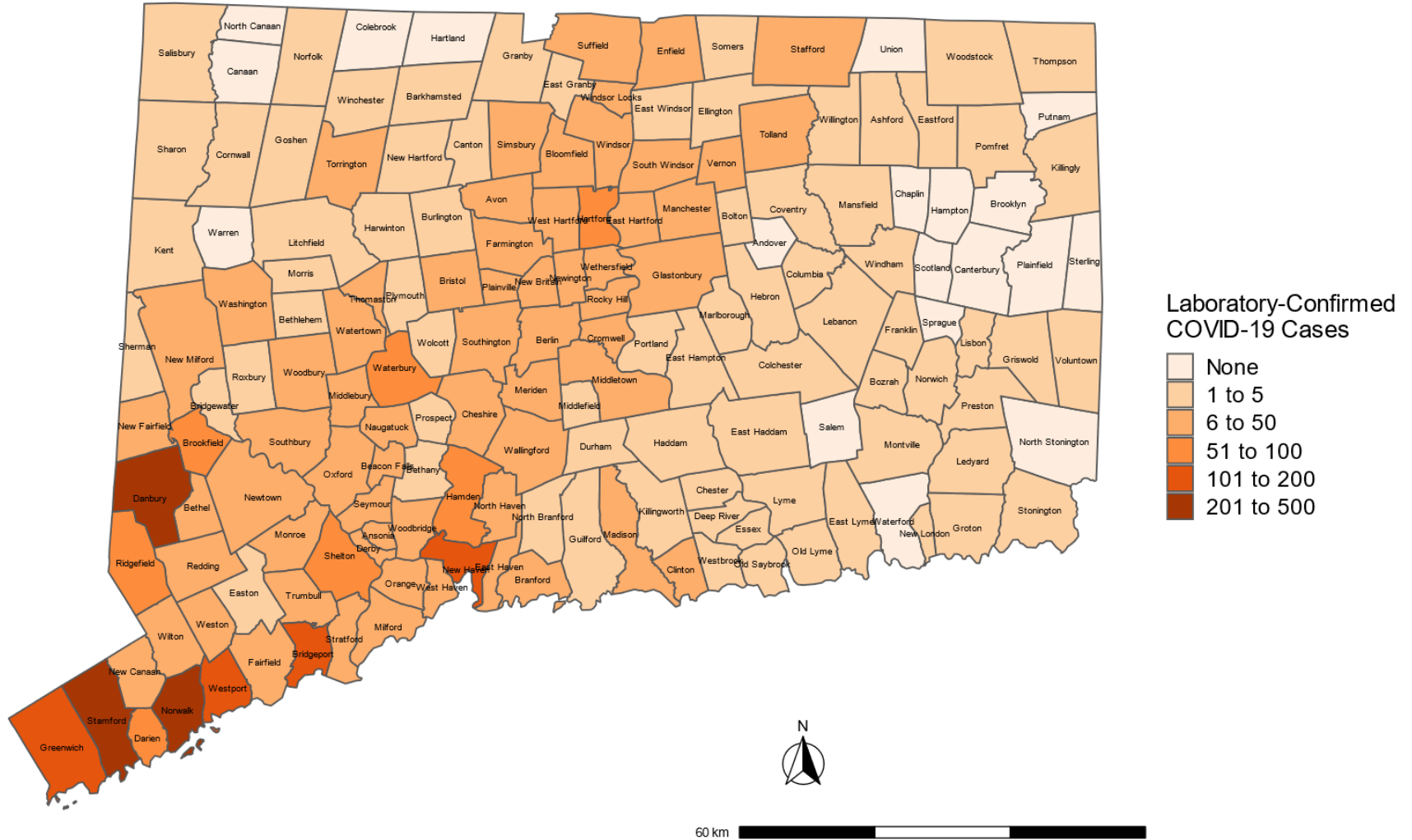
Number of Laboratory-Confirmed COVID-19 Deaths by Gender

As of 04/01/2020 at 12:30pm



Connecticut Towns with Confirmed Cases of COVID-19

Map does not include 185 cases pending address validation.



Last updated 4/1/20. All data are preliminary and subject to change.

APPENDIX A. Towns with Confirmed Cases of COVID-19
Table does not include 185 cases pending address validation.

Town	Cases
Andover	0
Ansonia	22
Ashford	3
Avon	10
Barkhamsted	1
Beacon Falls	6
Berlin	14
Bethany	1
Bethel	38
Bethlehem	4
Bloomfield	16
Bolton	2
Bozrah	1
Branford	22
Bridgeport	105
Bridgewater	3
Bristol	15
Brookfield	58
Brooklyn	0
Burlington	5
Canaan	0
Canterbury	0
Canton	2
Chaplin	0
Cheshire	20
Chester	1
Clinton	8
Colchester	3
Colebrook	0
Columbia	2
Cornwall	1
Coventry	4
Cromwell	7
Danbury	227
Darien	72
Deep River	3
Derby	14
Durham	2
East Granby	1
East Haddam	2
East Hampton	4
East Hartford	23
East Haven	16
East Lyme	2
East Windsor	2
Eastford	1
Easton	5
Ellington	4
Enfield	33
Essex	2
Fairfield	47
Farmington	15
Franklin	1
Glastonbury	13
Goshen	1
Granby	1
Greenwich	157

Town	Cases
Griswold	1
Groton	2
Guilford	5
Haddam	1
Hamden	56
Hampton	0
Hartford	74
Hartland	0
Harwinton	4
Hebron	4
Kent	5
Killingly	2
Killingworth	1
Lebanon	2
Ledyard	2
Lisbon	2
Litchfield	4
Lyme	1
Madison	12
Manchester	28
Mansfield	1
Marlborough	3
Meriden	31
Middlebury	7
Middlefield	1
Middletown	24
Milford	20
Monroe	9
Montville	3
Morris	1
Naugatuck	13
New Britain	32
New Canaan	43
New Fairfield	32
New Hartford	3
New Haven	135
New London	2
New Milford	35
Newington	28
Newtown	33
Norfolk	1
North Branford	5
North Canaan	0
North Haven	13
North Stonington	0
Norwalk	315
Norwich	2
Old Lyme	1
Old Saybrook	5
Orange	8
Oxford	12
Plainfield	0
Plainville	7
Plymouth	2
Pomfret	2
Portland	3
Preston	1

Town	Cases
Prospect	5
Putnam	0
Redding	16
Ridgefield	78
Rocky Hill	20
Roxbury	3
Salem	0
Salisbury	3
Scotland	0
Seymour	15
Sharon	3
Shelton	55
Sherman	4
Simsbury	9
Somers	4
South Windsor	10
Southbury	13
Southington	25
Sprague	0
Stafford	17
Stamford	437
Sterling	0
Stonington	2
Stratford	34
Suffield	14
Thomaston	7
Thompson	1
Tolland	9
Torrington	22
Trumbull	21
Union	0
Vernon	13
Voluntown	1
Wallingford	14
Warren	0
Washington	10
Waterbury	86
Waterford	0
Watertown	10
West Hartford	23
West Haven	49
Westbrook	2
Weston	29
Westport	122
Wethersfield	18
Willington	1
Wilton	49
Winchester	2
Windham	5
Windsor	21
Windsor Locks	7
Wolcott	5
Woodbridge	6
Woodbury	6
Woodstock	5

APPENDIX B. The following graphs show the rate of cases per 100,000 Connecticut residents in each age group and by gender. Population estimates from: <https://portal.ct.gov/DPH/Health-Information-Systems--Reporting/Population/Population-Statistics>.

