



# Guam COVID-19 Situation Report - 162

## March 12–October 7, 2020

COVID-19 Cases  
Primary Reported Residence

COVID-19 Case Count*	Total	Today	Past 7 days
COVID-19 Cases	<b>2,868</b>	<b>50</b>	<b>380</b>
Confirmed cases	2,864	50	378
Probable cases	4	0	2

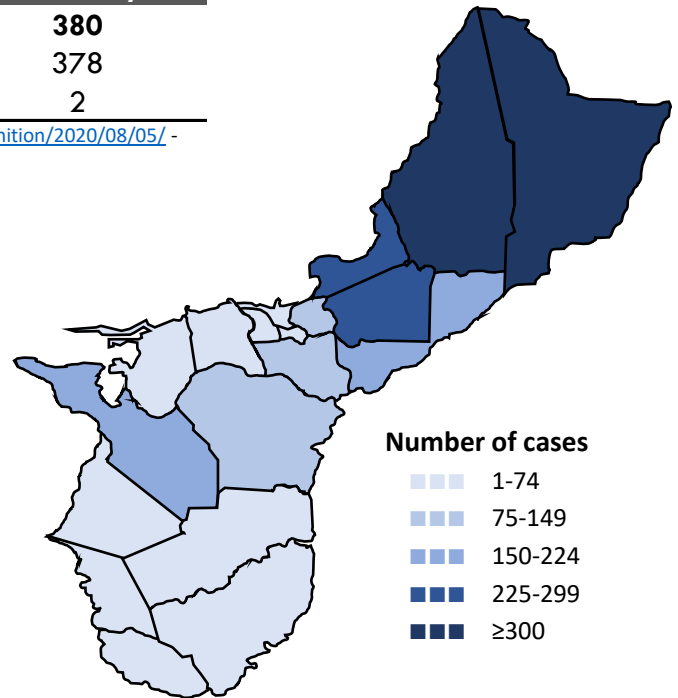
\*<https://www.cdc.gov/nndss/conditions/coronavirus-disease-2019-covid-19/case-definition/2020/08/05/> - CSTE/CDC COVID-19 case definition (August 5, 2020)

### Summary

As of October 7, 2020, there have been 2,868 cases of COVID-19 reported on Guam. Fifty (50) new confirmed cases of COVID-19 were reported to DPHSS on October 6. Two COVID-19 cases were reported deceased on October 7.

New confirmed cases reported today: 34 cases tested positive at GPLH, 6 tested positive at AMC, 4 tested positive at GMHA, 3 tested positive at DoD, and 3 tested positive at GRMC.

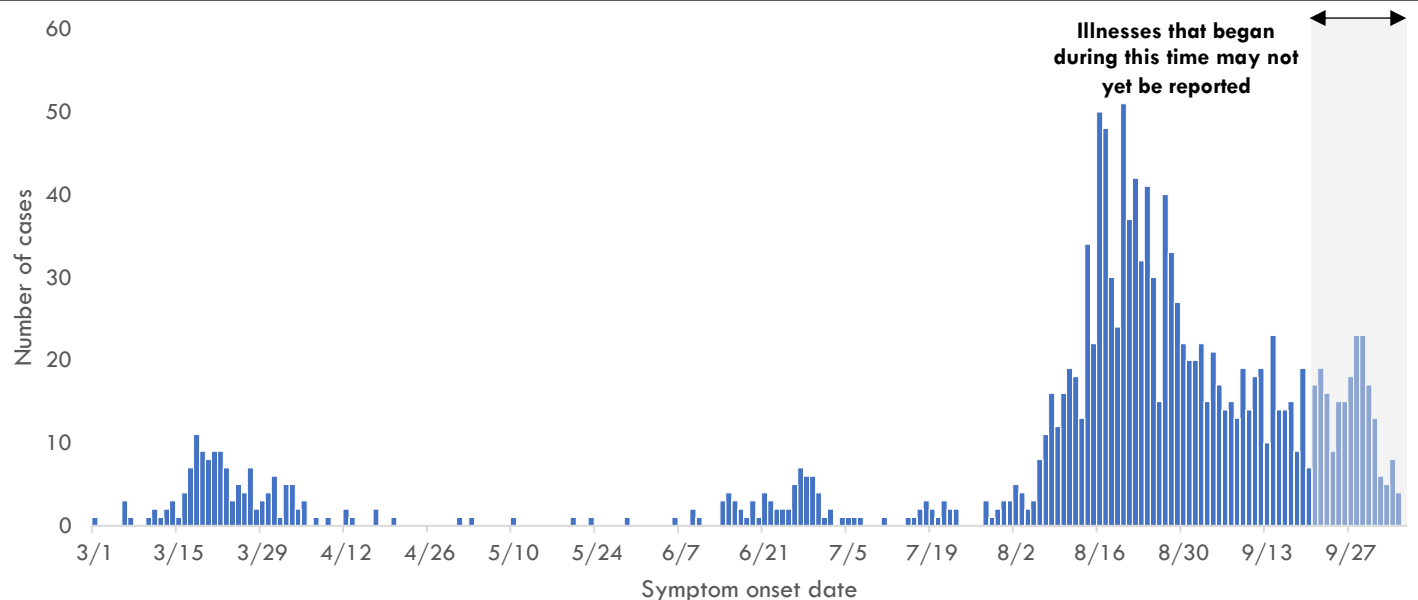
Twenty (20) cases were identified through contact tracing. Three cases reported recent travel from the US and were identified in quarantine. Two cases were reported released from isolation.



COVID-19 Testing on Guam**	Total	New tests reported today	Percent positive
COVID-19 Tests	53,677	472	5.3%
Molecular Tests	53,477	470	5.4%
Serology Tests	191	0	1.6%
Antigen Tests	9	2	44.4%

\*\*See COVID-19 Testing Breakdown for all testing definitions. New tests reported reflects the number of tests reported to DPHSS since the previous report and does not necessarily indicate the number of samples run in the same time frame. Complete test reporting is pending for antigen tests conducted on 9/29.

### COVID-19 cases by symptom onset date, Guam





# Guam COVID-19 Situation Report - 162

## March 12–October 7, 2020

### Case Breakdown

Status	Sex	Current isolation location
COVID-19 deaths	Female	Hospital
Cases in active isolation†	Male	Home
Cases not in isolation§	<b>Age Group</b>	Isolation facility
Civilian	0-9	Military
Military service member	10-19	<b>Epi-Link to COVID-19 case**</b>
<b>Travel History¶</b>	20-29	Household contact
US	30-39	Healthcare contact
Dubai	40-49	Community contact
Japan	50-59	Workplace contact
Mexico	60-69	<b>Residence</b>
Philippines	70-79	North
Singapore	80-89	Central
<b>Identified in quarantine</b>	90+	South
		Homeless
		Non-resident

Note: Data for recent cases are preliminary and are updated based on findings from case investigations. Residence under investigation for 62 cases.

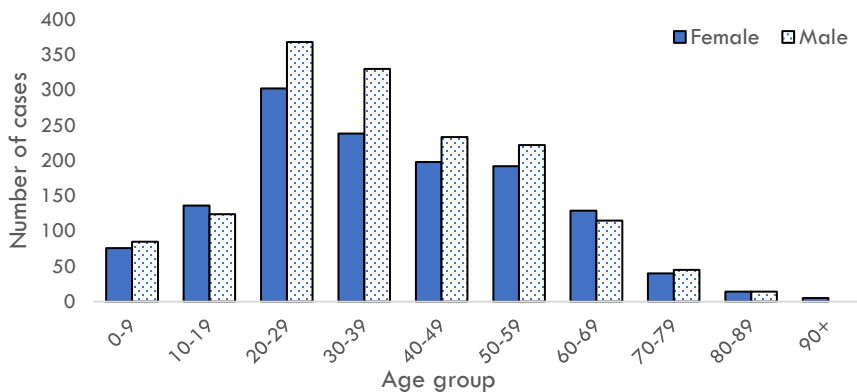
† Cases that test positive for COVID-19 through follow-up molecular testing return to active isolation.

§ Cases not in isolation indicates the number of COVID-19 cases that are no longer in active isolation based on criteria outlined on page 4. Generally, the criteria assess time since COVID-19 symptom resolution and the date of their most recent positive diagnostic test to qualify for release from isolation.

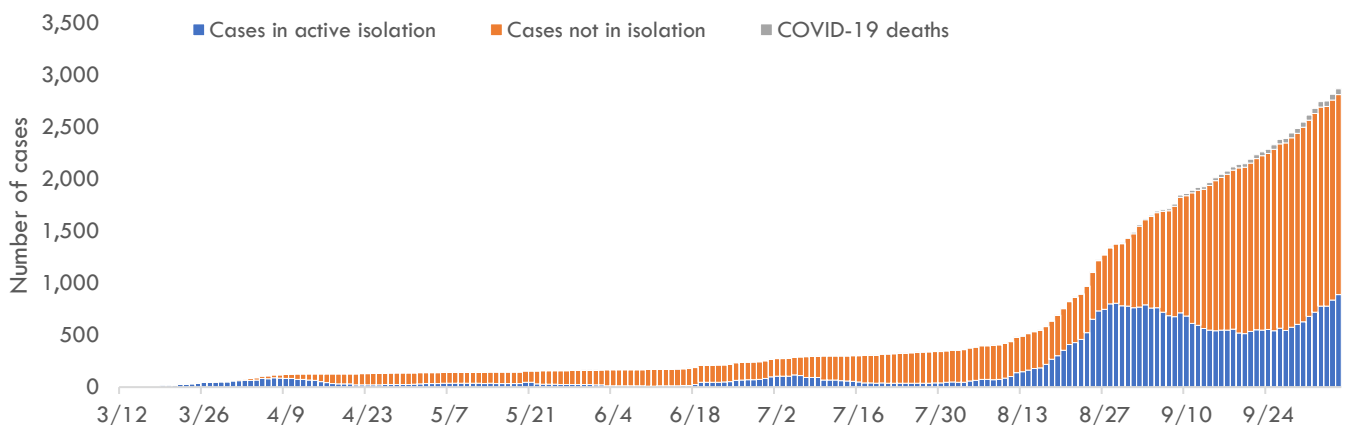
¶ In the 14 days before symptom onset. Some cases traveled to more than one country.

\*\* Some cases have more than one link to other COVID-19 cases.

### COVID-19 cases by age group and sex



### Number of cases in active isolation, cases not in isolation, and COVID-19 deaths, Guam





# Guam COVID-19 Situation Report - 162

## March 12–October 7, 2020

### COVID-19 TESTING BREAKDOWN

MOLECULAR TESTS	TOTAL	TOTAL POSITIVES*	NEW TESTS	NEW POSITIVES
<b>Guam Public Health Laboratory</b>	28,302	1,416	245	34
<b>Diagnostic Laboratory Services</b>	7,663	475	24	0
<b>Department of Defense</b>	7,500	476	55	3
<b>Guam Memorial Hospital Authority</b>	5,309	227	36	4
<b>Guam Regional Medical City</b>	3,152	144	46	3
<b>Private Clinics**</b>	1,534	124	64	6
<b>Guam National Guard Laboratory</b>	17	0	0	0

SEROLOGY TESTS	TOTAL	TOTAL POSITIVES	NEW TESTS	NEW POSITIVES
<b>Diagnostic Laboratory Services</b>	183	3	0	0
<b>Department of Defense</b>	8	0	0	0

ANTIGEN TESTS	TOTAL	TOTAL POSITIVES	NEW TESTS	NEW POSITIVES
<b>Private Clinics***</b>	9	4	2	0

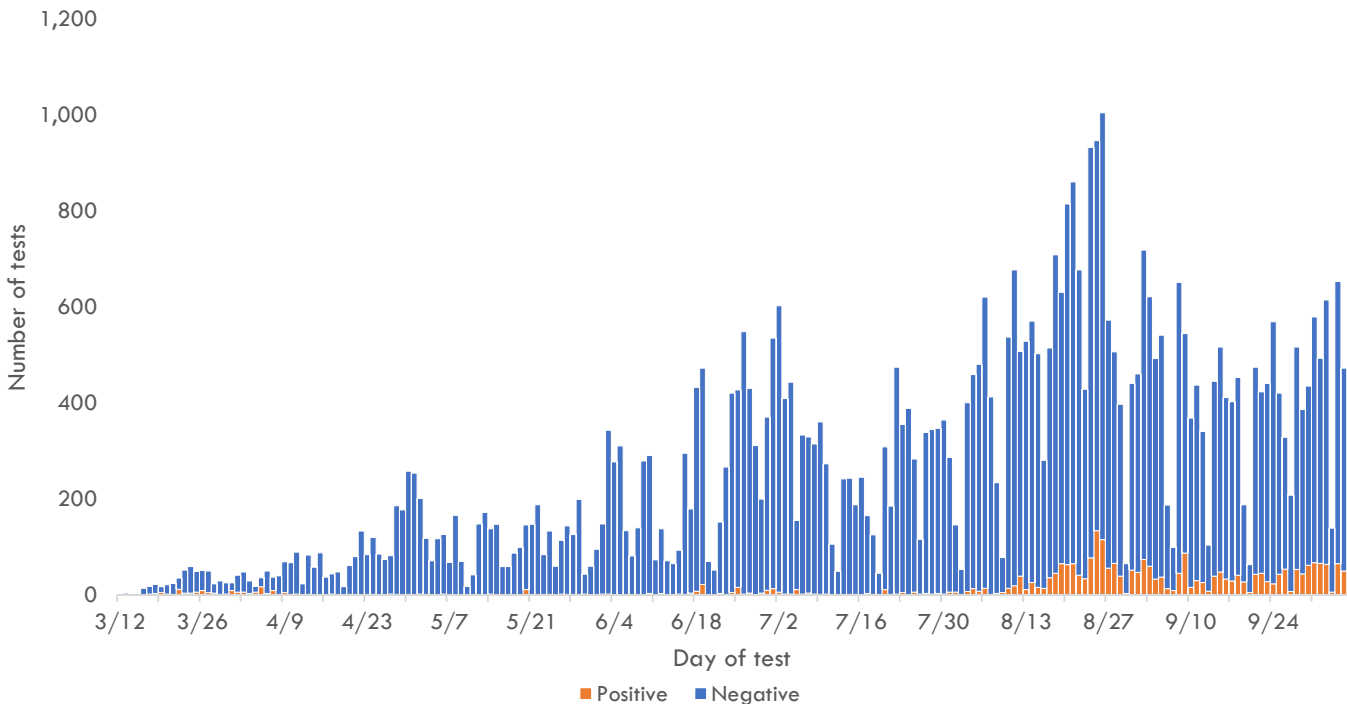
Total tests is defined as the number of tests with conclusive results not including follow-up testing for known COVID-19 cases. New tests reported today is defined as the total tests reported to DPHSS since the last Situation Report. Percent positive is defined as number of people with a positive test result, out of all people with COVID-19 testing. Total positives is defined as the number of people with a positive test result.

\*Two additional confirmed cases tested positive through molecular testing at an out-of-state laboratory.

\*\*Clinics included: American Medical Center, Guam Medical Care, Guam Radiology Consultants, and One Love Pediatrics.

\*\*\*Clinics included: Guam Medical Care and IHP Medical Group.

### COVID-19 testing by day of test, Guam



CONTACT INVESTIGATIONS	TOTAL	10/6/20
Contacts identified by DPHSS	8,999	57
Contacts tested by DPHSS	3,330	10
Cases identified through contact tracing	1,053	20

*Note: Data for recent cases are preliminary and are updated based on findings from case investigations.*

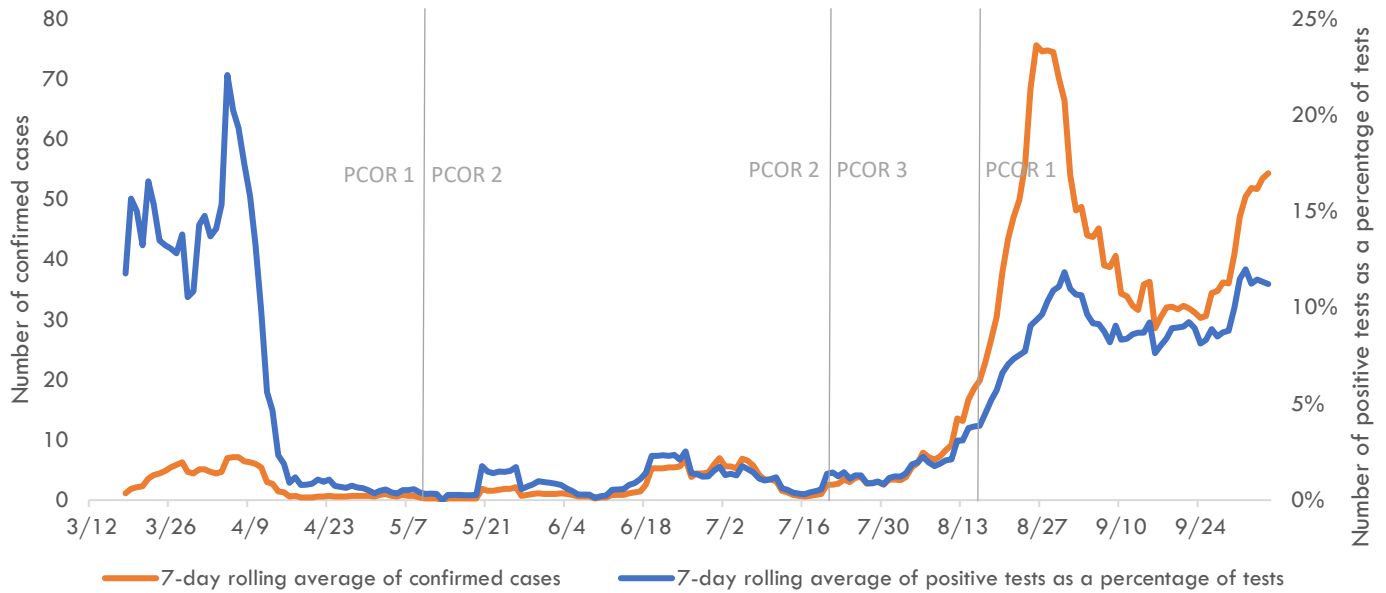


# Guam COVID-19 Situation Report - 162

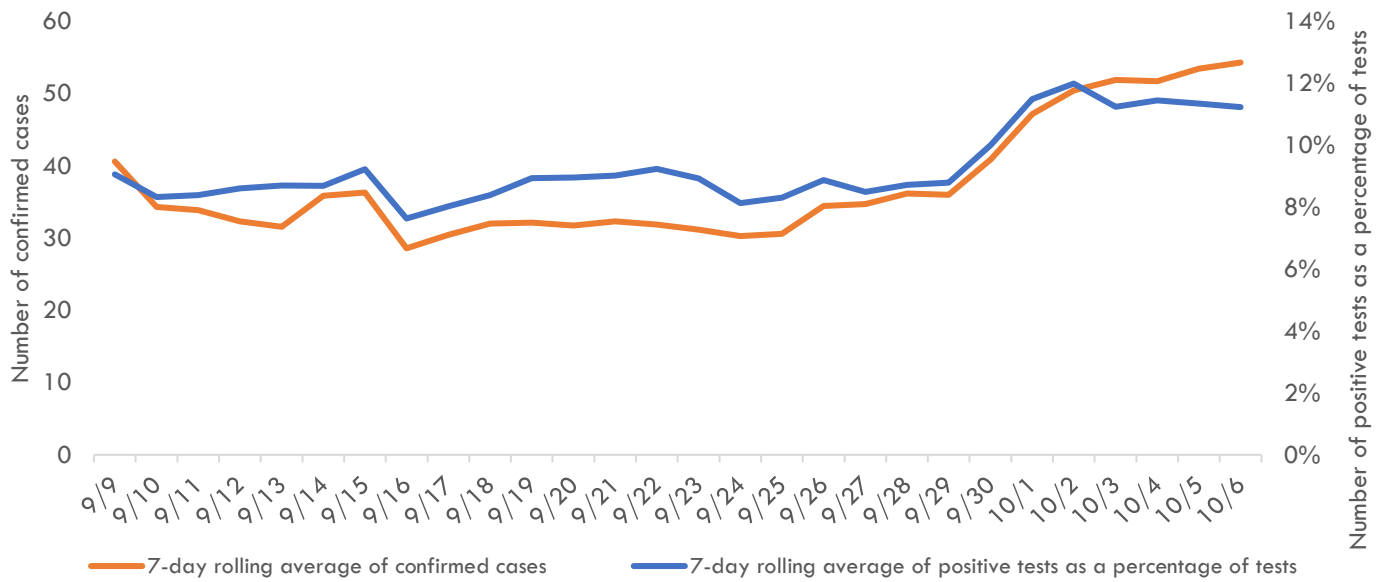
## March 12–October 7, 2020

### Pandemic Condition of Readiness Assessment

Triggers for PCOR - Cases, March 12–October 6, 2020



Triggers for PCOR - Cases, Previous 28 days



**† Criteria for release from isolation**

*For persons with mild to moderate illness who are not severely immunocompromised:*

For persons having symptoms: At least 3 days have passed since recovery defined as resolution of fever without the use of fever-reducing medications and improvement in respiratory symptoms (e.g., cough, shortness of breath) and any other symptoms attributed to COVID-19 AND at least 10 days have passed since symptoms first appeared—or since recurrent symptoms appeared—AND at least 10 days have passed since the date of their first (or most recent) positive COVID-19 diagnostic test.

For persons without symptoms: At least 10 days have passed since the date of their first (or most recent) positive COVID-19 diagnostic test assuming they have not subsequently developed symptoms since their positive test.

*For persons with severe to critical illness or who are severely immunocompromised:*

For persons having symptoms: At least 10 days have passed since symptoms first appeared, up to 20 days.

For persons without symptoms: At least 10 days have passed since the date of their first positive COVID-19 diagnostic test, up to 20 days.