

## 2019 Novel Coronavirus (COVID-19)

### Email Updates

To sign up for updates or to access your subscriber preferences, please enter your contact information below.

★ Email Address

Submit

The Indiana State Department of Health (ISDH) is closely monitoring an outbreak of the 2019 novel (new) coronavirus or COVID-19. This new respiratory virus was first identified in the city of Wuhan in China's Hubei Province and continues to infect people in China and around the world, including the United States. On March 6, ISDH [confirmed](#) the first case of COVID-19 in a Hoosier with recent travel. ISDH [reported](#) the second presumptive positive case of COVID-19 in the state on March 8.

ISDH is working with federal and local partners to respond to this evolving public health situation. The Centers for Disease Control and Prevention (CDC) reports that the risk of infection in the United States is low, as the virus has had limited person-to-person spread in the United States at this time. The CDC does not have any evidence to suggest that animals or animal products imported from China pose a risk for spreading COVID-19 in the United States.

Please consult this page for updated news and guidance on the COVID-19 outbreak. Updates will be made as new information becomes available. Please call the ISDH Epidemiology Resource Center at **317-233-7125 [317-233-1325 after hours]** or e-mail [epiresource@isdh.in.gov](mailto:epiresource@isdh.in.gov) if you experience symptoms such as fever, cough and shortness of breath and have a recent history of travel to China or contact with someone suspected of having COVID-19.

## Frequently asked questions and answers

- [CDC novel coronavirus \(COVID-19\) FAQs](#)
- [Frequently Asked Questions About Personal Protective Equipment](#)
- [Healthcare Professionals: Frequently Asked Questions and Answers](#)

General novel coronavirus (COVID-19) information and resources

Information for healthcare professionals

Information for laboratories

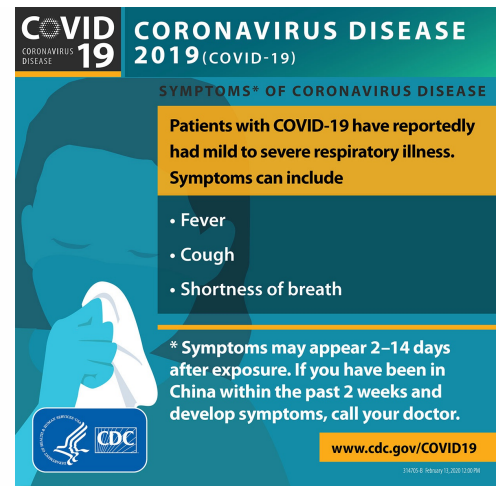
Guidance for healthcare workers and emergency responders

## General novel coronavirus (COVID-19) information and resources

### What you need to know

- [Coronavirus Infographic](#) (English)

- [Coronavirus Infographic](#) (Spanish)
- [Coronavirus Infographic](#) (Chinese)
- [2019 Novel Coronavirus \(COVID-19\) in the U.S.](#)
- [Novel Coronavirus: Prevention steps for close contacts \(infographic\)](#)
- [How COVID-19 spreads](#)
  - [Symptoms](#)
  - [Prevention & Treatment](#)
  - [What to do if you are sick with 2019 Novel Coronavirus](#)
- [Information for Travelers](#)
- [Preventing 2019 Novel Coronavirus \(COVID-2019\) from Spreading to Others in Homes and Communities](#)



## Community Organizations

- [Preventing COVID-19 Spread in Communities](#)
  - [Interim Guidance for Businesses and Employers to Plan and Respond to 2019 Novel Coronavirus, February 2020](#)
  - [Interim Guidance for Colleges and Universities](#)
  - [Interim Guidance for Administrators of US Childcare Programs and K-12 Schools](#)
  - [Novel Coronavirus \(COVID-19\) Guidance for Schools \(new\)](#)
- [Community Mitigation Guidance: Nonpharmaceutical Interventions for Community Preparedness and Outbreak Response](#)
- [COVID-19 Information for Public Facilities and Organizations](#)

## Information for healthcare professionals

- [Novel Coronavirus Case Definition](#)
- [CDC Resources for Healthcare Facilities](#)
  - [Steps Healthcare Facilities Can Take Now to Prepare for COVID-19](#)
  - [Interim Guidance for Healthcare Facilities: Preparing for Community Transmission of COVID-19](#)
- For local health departments: [Traveler Notification, Risk Assessment and Monitoring Guidance](#)
- [Caring for patients with Confirmed or Possible COVID-19 Infection](#)
- [Guideline for Isolation Precautions: Preventing Transmission of Infectious Agents in Health Care Settings](#)
- [Interim Guidance for Implementing Home Care of People Not Requiring Hospitalization for 2019 Novel Coronavirus \(COVID-19\) or as infographic](#)
- [COVID-19 Specimen Collection and Submission Guidelines](#)
- [Novel Coronavirus \(COVID-19\) Specimen Authorization Algorithm \(new\)](#)
- [COVID-19 Checklist for Healthcare Professionals](#)
- [COVID-19 Interim Recommendations for Outpatient Facilities](#)
- [COVID-19 Guidance for Nurse Lines and Schedulers](#)
- [COVID-19 Home Care Instructions for Novel Coronavirus](#)
- [Patient Travel Poster \(English and Chinese\)](#)
- [Flowchart to Identify and Assess 2019 Novel Coronavirus](#)
- [Healthcare Supply of Personal Protective Equipment](#)
- [Interim Considerations for Disposition of Hospitalized Patients with COVID-19 Infection](#)
- [Frequently Asked Questions about Respirators and Their Use](#)
- [Strategies for Optimizing the Supply of N95 Respirators](#)

## Long-term Care Facilities

- [COVID-19 Information for Long Term Care Facilities \(new\)](#)
- [Strategies to Prevent the Spread of COVID-19 in Long-Term Care Facilities \(LTCF\)](#)
- [COVID-19 Long Term Care Visitor Poster \(new\)](#)

## Information for laboratories

---

- [Interim Guidelines for Collecting, Handling, and Testing Clinical Specimens from Patients Under Investigation \(PUIs\) for 2019 Novel Coronavirus \(COVID-19\)](#)
  - [Interim Laboratory Biosafety Guidelines for Handling and Processing Specimens Associated with 2019 Novel Coronavirus \(COVID-19\)](#)
  - [LimsNet Sample Submission](#)
  - [ISDH Virology Paper Submission](#)
  - [10 Things You Should Know about SARS-CoV-2 and COVID-19](#)
  - [COVID-19 specimen submission and collection guidelines \(new\)](#)
- 

## Guidance for healthcare workers and emergency responders

---

- [Interim Infection Prevention and Control Recommendations for Patients Under Investigation for 2019 Novel Coronavirus](#)
- [Guideline for Isolation Precautions: Preventing Transmission of Infectious Agents in Health Care Settings](#)
- [Interim Guidance of Emergency Medical Services and 911 Public Safety Answering Points for COVID-19 in the U.S.](#)

Page last updated: March 8, 2020

---

### Get Help

[Live Chat with State Information Center](#)

---

[Email State Information Center](#)

---

[Find a Person](#)

---

[Find an Agency](#)

---

[Call: 1-800-457-8283](#)

---

[Text: 1-855-463-5292](#)

### Quick Information

[IN.gov User Survey](#)

---

[Advanced Search](#)

---

[Policies](#)

---

[Sitemap](#)

---

[IN.gov FAQs](#)

---

[State Employee Resources](#)

### State Information

[Maps & Information](#)

---

[IN.gov News & Events](#)

[Email Updates - GovDelivery](#)

[Indiana Code](#)

[Indiana Administrative Code](#)

[Awards](#)

## IN.gov Settings

### Contrast Setting

Default

Dark

### Text Setting

Normal

Large

### Accessibility Tools

[Browse Aloud](#)

[Text Only Version of IN.gov Website](#)

[Google Translate](#)

