

kycovid19.ky.gov



COVID-19 Hotline (800) 722-5725

The COVID-19 hotline is a service operated by the healthcare professionals at the KY Poison Control Center who can provide advice and answer questions.

FOR GENERAL INQUIRIES

Please send an email to KYcovid19@ky.gov.

Find a COVID-19 Testing Location

Filter by County

(select)

First Choice Immediate Care



Adair County

Adair Family Medical Center



Adair County

New Path Medical Center



Adair County

T.J. Health Columbia Primary Care



Adair County

Agape Health Center



Allen County

Family Care of the Bluegrass-



Complete the following form to have your COVID-19 testing site/information provided to the public.

[Submit a Location](#)

Kentucky Coronavirus Monitoring

Current as of May 27, 2020 at 5 p.m. Eastern time.

Total Tested

200,762

PCR: 181,948 - Serology: 18,814

Total Positive

9,077

Probable: 153 - Lab Confirmed: 8,924

Deaths

400

Probable: 1 - Lab Confirmed: 399

Recovered

3,124

Race of Cases Where Race Known (70.64% of total Known)

White	74.16
Black or African American	14.61%
Asian	5.58%
American Indian or Alaska Native	0.09%
Multiracial	5.46%

N.Hawaiian	0.09%
------------	-------

Ethnicity of Cases Where Ethnicity Known (67.89% of Total Known)

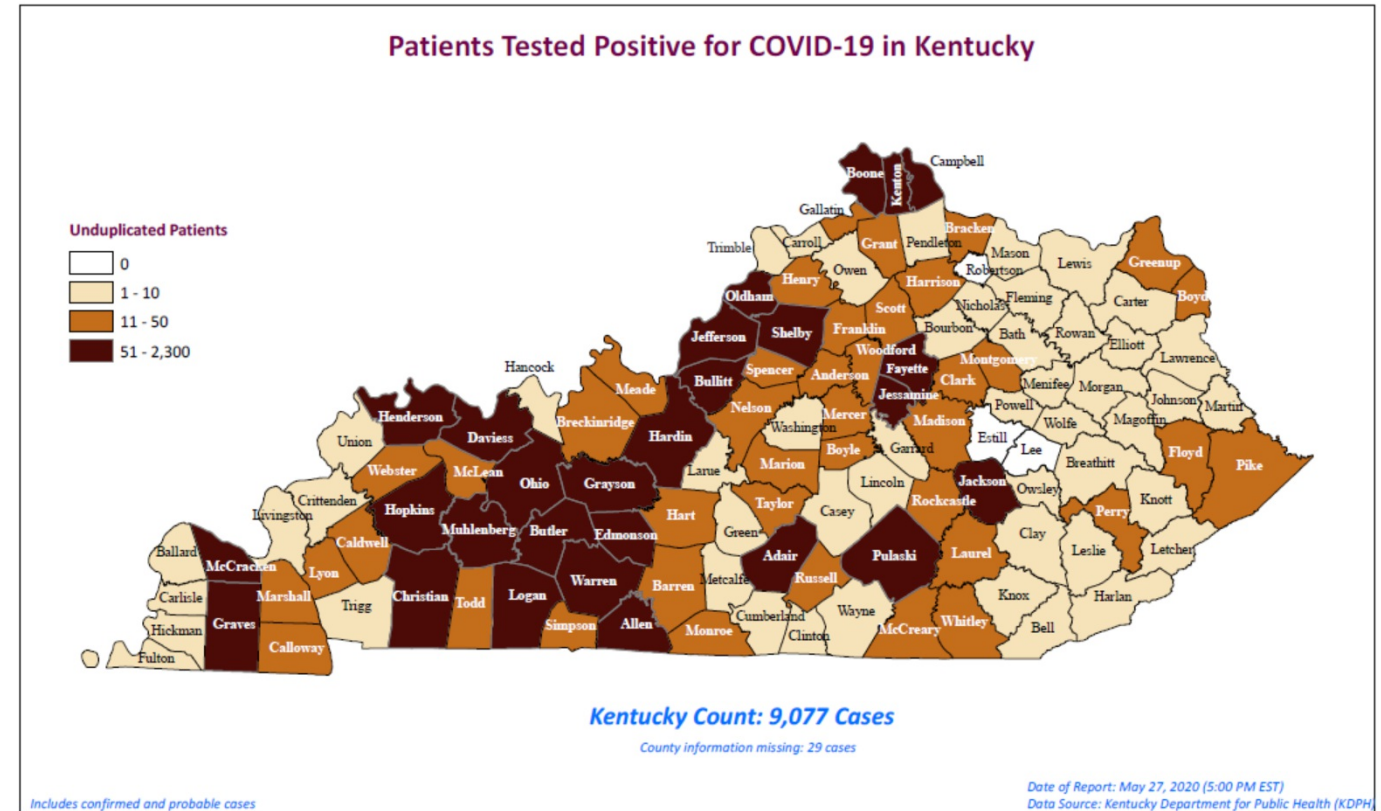
Hispanic	14.75%
Non-Hispanic	85.25%

Sex of Cases

Male	47.50%
Female	49.60%
Unknown	2.89%

Note: Data includes cases of COVID-19 reported to KDPH.

Long Term Care and other Congregate Facilities Update



Interactive Maps

View Confirmed Cases, Cases by County, Cases by Sex, Cases by Age Group, Confirmed Deaths, Deaths by Sex and Deaths by Age Group.

Desktop Dashboard

Mobile Dashboard

In the event of a discrepancy between case confirmations, please note kycovid19.ky.gov is reporting confirmed cases by the Kentucky Department of Public Health (KDPH). We are working diligently to

confirm cases as they are reported to KDPH.

Healthy at Work

Our phased approach to reopen Kentucky's economy

[LEARN MORE](#)

COVID-19 Related Actions taken by Gov. Andy Beshear

Daily actions and executive orders taken by the Governor

[Learn More](#)

Team Kentucky Fund

Governor Andy Beshear invites all Kentuckians to make a tax deductible donation to the Team Kentucky Fund. This fund provides assistance to Kentuckians who have been severely financially impacted by the COVID-19 emergency.

[DONATE](#)

Team Kentucky Fund Financial Assistance Application Portal

The Team Kentucky Fund is overseen by the Public Protection Cabinet. The program will be administered through a partnership with the Community Action Kentucky, Inc.

[Apply Here](#)

[Apply here](#)

Contact Tracing Jobs

Team Kentucky is hiring for COVID-19 Contact Tracing related jobs. Team Kentucky has partnered with vendors across the state.

[Learn More](#)

KYSAFER

Report observations of non-compliance with the restrictions on workplace and public gathering.

[View Reporting
Options](#)

TeleHealth

Promoting, advocating and supporting telehealth adoption across the Commonwealth

[Learn More](#)

Donate PPE

Please complete the form below if you have any supplies to support Kentucky's COVID-19 response.

[Donate Now!](#)

Price Gouging

Information regarding possible price gouging, contact the Office of the Attorney General Consumer Protection Branch.

[Report Online](#)

[888-432-9257](#)



The Kentucky Department for Public Health (KDPH) is responding actively to the COVID-19 situation. Our State Health Operations Center is operating at Level 1, its highest activation level. This respiratory disease was first detected in a Kentucky resident on March 6, 2020.

Resources

[Kentucky's Response to COVID-19](#)



[KDPH Guidance for Businesses](#)



[COVID-19 Graphics](#)



[Guidance by Topic](#)



[Newest KDPH Guidance](#)



[CDC Face Cover Tutorial](#)

[Guidance on Cloth Face Masks](#)

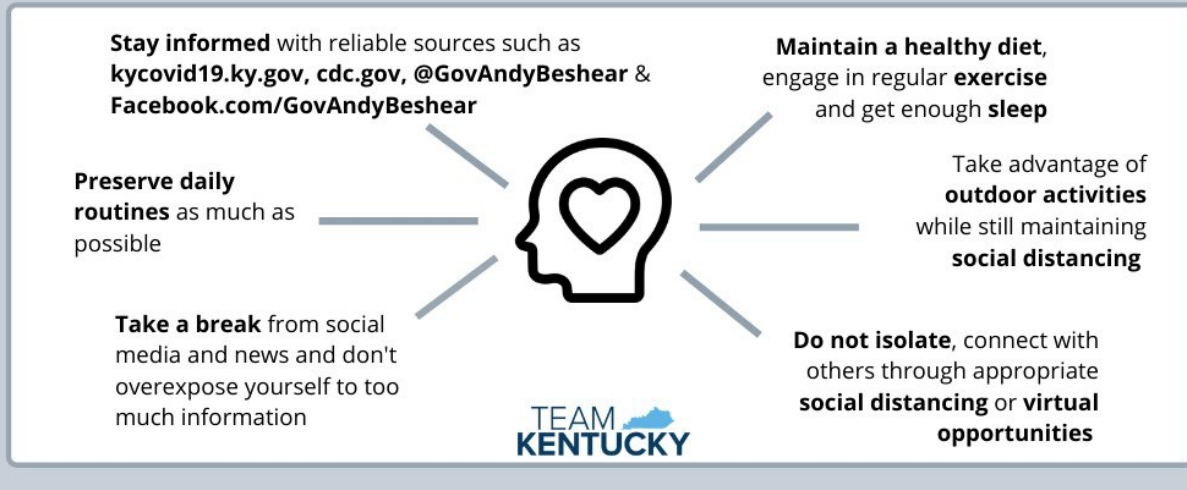
[Mental Health and Relieving Anxiety](#)



Uncertainty leads to anxiety. Follow these tips to maintain your mental health and reduce anxiety. Please seek professional help if needed. For more information, visit the CDC guidance for [managing anxiety and stress](#).

COVID-19 HEALTH TIPS

Mental Health & Relieving Anxiety



[CDC Mental Health and Coping during COVID-19](#)

[Parent/Caregiver Guide to helping families cope with the Coronavirus Disease 2019](#)

Services



During the COVID-19 State of Emergency, individuals who need special healthcare coverage should click here [Healthcare Coverage Application](#). This coverage is temporary and ends 2 months after the application month unless you submit an application for regular Medicaid. For application help, contact an application assister through the [Application Assister Web Page](#) or call the Kentucky Healthcare Customer Service line toll-free at (855) 459-6328. For a listing of participating medical providers please access the [Kentucky Medicaid Provider Directory](#). If you have questions or need more information about a participating provider, you can call 1-800-635-2570.

[How to file an unemployment insurance claim if you have lost a job or are sick due to COVID-19](#)

Individuals may apply for Medicaid by calling the Kentucky Healthcare Customer Service line toll-free at (855) 459-6328, contacting an application assister through the [Kentucky Health Benefit Exchange website](#), visiting the [Benefind website](#) or by calling the DCBS Call Center toll free at (855) 306-8959.

[KY Medicaid COVID - 19 Information](#)

Individuals may apply for the *Supplemental Nutrition Assistance Program (SNAP)*, formerly known as food stamps, by visiting the [Benefind website](#) or by calling the DCBS Call Center toll free at (855) 306-8959.

To see if you might be eligible for WIC, visit: [WIC Screening Tool](#). If you think you might be eligible, contact your [local health department](#) for more information on enrolling.

Healthcare Providers



Contact Tracing

A Confidential Public Health Resource

What is Contact Tracing?

Contact Tracing is a process used by the Kentucky Department for Public Health to help stop the spread of diseases like COVID-19.

GOAL: Stop the Spread and Save Lives



Public Health workers reach out to individuals who have contracted COVID-19 to assess their situation and track any recent in-person contacts.



Tracers reach out to identified contacts to provide instructions and connect them to local resources.



By following instructions provided by the Tracer, contacts help stop the spread of COVID-19 and save the lives of Kentuckians.

What if I am contacted?

Answer Contact Tracing calls

Report information clearly and completely

Work together with Public Health workers

Follow instructions provided

Contact Tracing Resources

[What is Contact Tracing](#)

[Contact Tracing Postcard](#)

[Contact Tracing Infographic](#)

[Frequently Asked Questions](#)

[Contact Tracing Public Service Announcement Toolkit](#)

KDPH Updates

Understanding antibody test is complicated. Please watch this video to learn more.

Face Covering Tutorial

Information on Face Coverings **UPDATED**

COVID-19 Prevention Tips in ASL

ASL Mental Health

[KDPH Archived Videos](#)

Kentucky State Agencies Respond to COVID-19

[Kentucky Department of Education](#)

[Finance and Administration Cabinet](#)

[Kentucky Labor Cabinet](#)

[Governor's Office of Agricultural Policy](#)

[Kentucky Commission on the Deaf and Hard of Hearing \(KCDHH\)](#)

[KCDHH COVID-19 Updates](#)

[KDPH Food Safety Branch](#)

Other Resources

[Healthy at Work sign](#)

[Healthy at Work sign - Spanish](#)

[Healthy at Work sign - French](#)

[Do not enter if sick sign](#)

[Do not enter if sick sign - Spanish](#)

[Grocery Store Signage for Customers](#)

[Grocery Store Social Distancing Signage](#)

[Grocery Store Signage for Staff](#)

[FDA: Food Safety and the Coronavirus Disease 2019](#)

For COVID-19 information in multiple languages, visit
[Resources in 150+ Languages \(Source: Endangered Language Project\)](#)

Updated on May 27th, 2020 05:15PM

[Cabinet for Health and Family Services](#)

[Policies](#) [Security](#) [Disclaimer](#) [Accessibility](#)