

TEAM KENTUCKY



COVID-19 Hotline (800) 722-5725

The COVID-19 hotline is a service operated by the healthcare professionals at the KY Poison Control Center who can provide advice and answer questions.

FOR GENERAL INQUIRIES

Please send an email to KYcovid19@ky.gov

If you are a lab providing COVID-19 services, please [complete this form](#).

[Labs providing COVID-19 services in KY](#)

Complete the following form to have your COVID-19 testing site/information provided to the public. [Submit a Location](#)
If you are a facility and need your information on the map updated, please [submit a map update](#).

Kentucky Coronavirus Monitoring

Current as of August 22, 2020

Total Positive

43,066

Probable: 3,311 - Confirmed: 39,755

Deaths

872

Probable: 6 - Confirmed: 866

Total Tested

819,265

PCR: 760,649 - Serology: 46,187 - Antigen: 12,429

Positivity Rate*

4.84

Recovered

9,502

Long Term Care

and other Congregate Facilities Update

KY COVID-19

Daily Report

*Based on a 7-day rolling average. Timing of reporting overall lab results versus positives, repeat testing of individuals, duplicate entries and lack of reporting by some labs, make the data imprecise and more appropriate or useful for trending.

[Learn more about how KDPH determines the positivity rate.](#)

Note: Data includes cases of COVID-19 reported to KDPH.

[KY COVID-19 Case Classification](#)

[COVID-19 Daily Reports beginning June 1, 2020](#)

Healthy at Work

Our phased approach to reopen Kentucky's economy

[LEARN MORE](#)

COVID-19 Related Actions taken by Gov. Andy Beshear

Daily actions and executive orders taken by the Governor

[Learn More](#)

Team Kentucky Fund

Governor Andy Beshear invites all Kentuckians to make a tax deductible donation to the Team Kentucky Fund. This fund provides assistance to Kentuckians who have been severely financially impacted by the COVID-19 emergency.

[DONATE](#)

TeleHealth

Promoting, advocating and supporting telehealth adoption across the Commonwealth

[Learn More](#)

KYSAFER

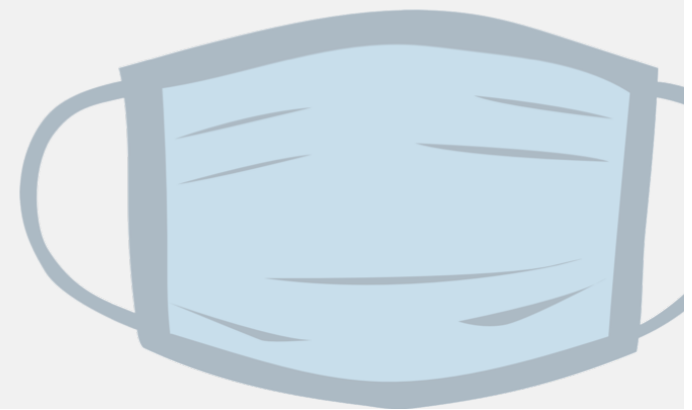
Report observations of non-compliance with rules that keep our fellow Kentuckians safe. 1-833-KYSAFER

The Team Kentucky Fund is overseen by the Public Protection Cabinet. The program will be administered through a partnership with the Community Action Kentucky, Inc.

[Apply Here](#)

Face Coverings FAQs

View a list of frequently asked questions about Governor Beshear's Executive Order related to face coverings.



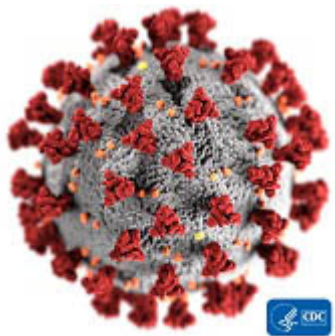
[Learn More](#)

Price Gouging

Information regarding possible price gouging, contact the Office of the Attorney General Consumer Protection Branch.

[Report Online](#)

[888-432-9257](tel:888-432-9257)



The Kentucky Department for Public Health (KDPH) is responding actively to the COVID-19 situation. Our State Health Operations Center is operating at Level 1, its highest activation level. This respiratory disease was first detected in a Kentucky resident on March 6, 2020.

Contact Tracing

A Confidential Public Health Resource

Presumptive Eligibility One Pager NEW				
Education Talking Points				
Contact Tracing: Myth vs. Fact				
Contact Tracing: Your Action Matters	Spanish	Burmese	Somali	Chinese
Contact Tracing: How It Works	Spanish	Burmese	Somali	Chinese
Contact Tracing One Pager	Spanish	Burmese	Somali	Chinese
What is Contact Tracing	Spanish	Burmese	Somali	Chinese
Contact Tracing Postcard	Spanish	Burmese	Somali	Chinese
Contact Tracing Infographic	Spanish	Burmese	Somali	Chinese
Frequently Asked Questions UPDATED	Spanish	Burmese	Somali	Chinese
Contact Tracing Public Service Announcement Toolkit	Spanish	Burmese	Somali	Chinese

When printing the above materials, please print the “Presumptive Eligibility One Pager” as well.

Contact Tracing Jobs

Team Kentucky is hiring for COVID-19 Contact Tracing related jobs. Team Kentucky has partnered with vendors across the state.

[Learn More](#)

Resources

Kentucky's Response to COVID-19

[↗](#)

KDPH Guidance for Businesses

[↗](#)

COVID-19 Graphics

[↗](#)

Guidance by Topic

[↗](#)

Newest KDPH Guidance

[↗](#)

Mental Health and Relieving Anxiety

[↗](#)

Services

[↗](#)

Become a volunteer- Learn More about [Medical Reserve Corps \(MRC\)](#) Sign up to volunteer [here](#).

The COVID-19 response in Kentucky involves stakeholders at every level of the healthcare system. The following documents and links reflect the most current guidance for healthcare providers, laboratories and local public health.

COVID-19 Case Reporting

[Person Under Investigation \(PUI\) Case Reporting Instructions and Form](#)

[EPID 200 Kentucky Reportable Disease Form](#)

Healthcare Providers and Lab (KDPH)

Learn More about [Battelle CCDS](#) services. [Letter from Dr. Stack](#) **Time Sensitive**

[Healthcare Provider/Testing Site Reporting Guidance](#) **New**

[Clinical Commercial Lab Covid Guidance](#) **New**

[COVID-19 Testing Services Contract](#)

[Blanket Test Order July 9, 2020](#)

[Lab Services Form](#) To be completed by labs offering COVID-19 services.

[Guidance for Release from Isolation/Return to Work](#) **Updated**

[Healthcare Final Phase Order](#)

[Healthcare Phase II Order](#)

[Healthcare Phase I Order](#)

[E-kit Order](#)

[COVID-19 PPE Request Fact Sheet](#)

[Optimization of PPE](#)

[CDC Guidance for Certifying COVID-19 Deaths](#)

[Video Guidance for Certification of COVID-19 Deaths](#)

[Rehabilitative Services and COVID-19](#)

[Controlled Substance Prescribing \(KBML\)](#)

[Elective Healthcare Services](#)

[Guidance for Acute Healthcare Facilities in response to COVID-19](#)

[COVID-19 Health Advisory Update and Clinical Guidance](#)

[Guideline for Conservation of Respiratory Protection Resources](#)

[KDPH Division of Laboratory Services](#)

Long Term Care Guidance

[Covid-19 Surveillance Testing for Long-Term Care Facility Staff and Residents](#) New

[Long Term Care Facilities Updates](#)

[COVID-19 PPE Request Fact Sheet](#)

[Guidance for Long-term Care Facilities in response to COVID-19](#)

Healthcare Providers and Laboratories

[COVID-19: Deaf and Hard of Hearing Communication Access Recommendations for the Hospital](#)

[SAMHSA OTP Guidance](#): SAMHSA issued guidance allowing states with and without emergency declarations to allow Opioid Treatment Programs (OTPs) to provide 28 days of take-home medication to stable patients and 15 days of medication to less stable patients whom the OTP believes can responsibly manage this amount of medication.

[SAMHSA 42 CFR Part 2 Guidance](#): SAMHSA issued guidance which allows providers to share patient SUD diagnosis information that would normally be protected under 42 CFR Part 2 in instances of a bona fide medical emergency. Usage of the medical emergency exception must be documented by providers.

[CMS Guidance to Catastrophic Coverage Plans](#): CMS issued an FAQ clarifying that catastrophic coverage plans must include coverage of COVID-19 diagnosis and treatment under the Essential Health Benefits. CMS will waive enforcement actions against any such plan which provides COVID-19 services before patients pay the plan's deductible, and encourages plans and states to provide such pre-deductible coverage.

[Update and Interim Guidance on Outbreak of COVID-19](#)

[Evaluating and Reporting Persons Under Investigation](#)

[Interim Infection Prevention and Control - Cases Confirmed or Under Investigation in Healthcare Settings](#)

[Interim Risk Assessment and Public Health Management - Travel-related or community transmission cases](#)

[COVID-19 Risk Assessment and Public Health Management Decision Making Flow Chart](#)

[Healthcare Infection Prevention and Control FAQs for COVID-19](#)

[Frequently Asked Questions About Personal Protective Equipment](#)

[Strategies for Optimizing Supply of N95 Respirators](#)

[Information for Laboratories](#)

[Interim U.S. Guidance for Risk Assessment and Public Health Management of Healthcare Personnel with Potential Exposure in a Healthcare Setting to Patients with COVID-19](#)

[Interim Guidance for Implementing Home Care of People Not Requiring Hospitalization for 2019 Novel Coronavirus \(2019-nCoV\)](#)

KDPH Updates

Face Covering Tutorial

Information on Face Coverings **UPDATED**

ASL Mental Health

[KDPH Archived Videos](#)

Kentucky State Agencies Respond to COVID-19

[Kentucky Department of Education](#)

[Finance and Administration Cabinet](#)

[Kentucky Labor Cabinet](#)

[Governor's Office of Agricultural Policy](#)

[Kentucky Commission on the Deaf and Hard of Hearing \(KCDHH\)](#)

[KCDHH COVID-19 Updates](#)

[KDPH Food Safety Branch](#)

Other Resources

[Wear masks properly sign](#)

[Wear masks properly sign - Spanish](#)

[Masks are required sign](#)

[Masks are required sign - Spanish](#)

[COVID-19 Survivor Support Information](#)

[Healthy at Work sign](#)

[Healthy at Work sign - Spanish](#)

[Healthy at Work sign - French](#)

[Do not enter if sick sign](#)

[Do not enter if sick sign - Spanish](#)

[Grocery Store Signage for Customers](#)

[Grocery Store Social Distancing Signage](#)

[Grocery Store Signage for Staff](#)

[FDA: Food Safety and the Coronavirus Disease 2019](#)

For COVID-19 information in multiple languages, visit [Resources in 150+ Languages \(Source: Endangered Language Project\)](#)

Updated on August 22nd, 2020 05:40PM

[Cabinet for Health and Family Services](#)

[Policies](#) [Security](#) [Disclaimer](#) [Accessibility](#)