

## Coronavirus Disease 2019 (COVID-19)

### What Michigan is Doing

On Feb. 3, the Michigan Department of Health and Human Services (MDHHS) activated the Community Health Emergency Coordination Center, and it has been working diligently with local health departments, health systems and medical providers to make sure appropriate screening and preparations for coronavirus disease 2019 (COVID-19) are being made.

[Read more about Michigan's response](#) >



[For Residents & Communities](#)



[For Health Care Professionals](#)



[For Childcare & School Admins](#)



[For Employers & Workers](#)

## MICHIGAN DATA

Date	3/8/2020
Meets PUI Criteria: Testing Approved	47
Negative for 2019-nCoV	36

<b>Positive for 2019-nCoV</b>	0
<b>Test Results Pending</b>	11
<b>Referred for Assessment and/or Monitoring to Date**</b>	440
<b>Total Assessment and/or Monitoring Referrals Under Active Monitoring</b>	88

*Test results will be updated daily; typically by 6 p.m.*

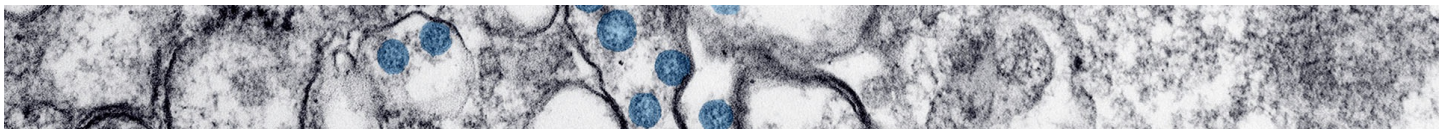
\*PUI - Persons Under Investigation

\*\*This includes referrals from CDC airport quarantine stations, self-referrals, close contacts of pending PUIs and healthcare provider referrals entered by local health departments.

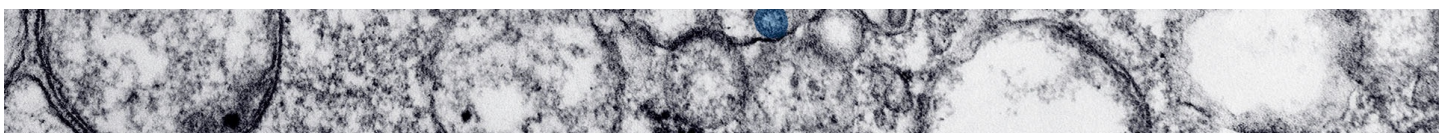
## LATEST MICHIGAN NEWS

- › [MDHHS Bureau of Laboratories obtains additional coronavirus testing kits, more than doubles the number of people possible for testing](#)
- › [AG Nessel Warns Businesses Seeking to Illegally Profit from Coronavirus Fears](#)
- › [Governor Whitmer Creates Task Forces to Combat Spread of Coronavirus](#)
- › [MDHHS state lab completes first in-state test for coronavirus disease 2019 \(COVID-19\), results come back negative](#)
- › [Governor Whitmer Activates State Emergency Operations Center to Coordinate State of Michigan Response to Coronavirus](#)
- › [AG Nessel, MDHHS Issue Warning to Consumers Regarding Coronavirus Scams](#)

### MORE CORONAVIRUS NEWS



**GET THE LATEST CORONAVIRUS UPDATES FROM CDC.GOV**



MICHIGAN.GOV HOME  
 ADA  
 MICHIGAN NEWS  
 POLICIES

COPYRIGHT 2020 STATE OF MICHIGAN