



Coronavirus Disease 2019 (COVID-19)

What Michigan is Doing

On Feb. 3, the Michigan Department of Health and Human Services (MDHHS) activated the Community Health Emergency Coordination Center, and it has been working diligently with local health departments, health systems and medical providers to make sure appropriate screening and preparations for coronavirus disease 2019 (COVID-19) are being made.

- Community Mitigation Strategies

[CLICK TO SUBSCRIBE TO NEWS UPDATES](#)

[Read more about Michigan's response](#) >



[For Residents & Communities](#)



[For Health Care Professionals](#)



[For Childcare & School Admins](#)



[For Employers & Workers](#)

MICHIGAN DATA

Date	3/14/2020
Meets PUI Criteria: Testing Approved	172
Negative for 2019-nCoV	205
Positive for 2019-nCoV	33
Test Results Pending	26
Referred for Assessment and/or Monitoring to Date**	661
Total Assessment and/or Monitoring Referrals Under Active Monitoring	255

Positive number has been updated. All other numbers are pending.

Test results will be updated daily; typically in the evening.

Testing data included in the chart reflects COVID-19 tests conducted by the MDHHS Bureau of Laboratories. Any additional testing underway by private lab companies is not reflected.

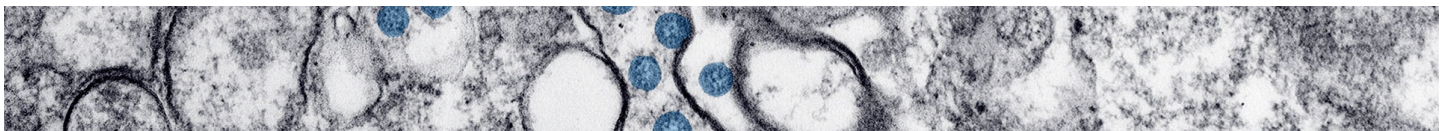
*PUI - Persons Under Investigation

**This includes referrals from CDC airport quarantine stations, self-referrals, close contacts of pending PUIs and healthcare provider referrals entered by local health departments.

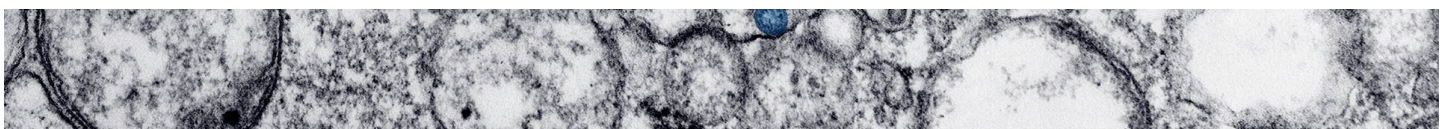
LATEST MICHIGAN NEWS

- › [AG Nessel, MSP Col. Gasper, MDHHS Director Gordon and Others Outline COVID-19 Capacity Restrictions, Efforts to Fight Price-gouging](#)
- › [Governor Whitmer Signs Executive Order to Impose Enhanced Restrictions on Price Gouging](#)
- › [Michigan announces 8 additional positive cases of COVID-19](#)
- › [Governor Whitmer Signs Executive Order Clarifying Restrictions on Entry into Care Facilities, Juvenile Justice Facilities](#)
- › [Michigan announces 9 additional presumptive positive cases of COVID-19](#)
- › [MDE Granted Federal Waiver for Meals to be Served During Closure](#)
- › [Michigan Career & Technical Institute to Close to Protect Against COVID-19](#)
- › [Governor Whitmer Orders Temporary Restrictions on Entry into Care Facilities and Juvenile Justice Facilities](#)

MORE CORONAVIRUS NEWS



GET THE LATEST CORONAVIRUS UPDATES FROM CDC.GOV





[MICHIGAN.GOV HOME](#)

[ADA](#)

[MICHIGAN NEWS](#)

[POLICIES](#)

COPYRIGHT 2020 STATE OF MICHIGAN