

Coronavirus Disease 2019 (COVID-19)

What Michigan is Doing

On Tuesday, March 10, Michigan's Governor Whitmer declared a state of emergency as the state's first positive cases of COVID-19 were identified. The emergency declaration enables the state to quickly deploy resources (equipment, supplies and/or personnel) to local jurisdictions to support their response efforts in combatting the spread of COVID-19. The declaration places Michigan at a heightened state of preparedness for response. All Michiganders are encouraged to follow the recommendations from MDHHS and the CDC to protect themselves and slow the spread of COVID-19.

- [Community Mitigation Strategies](#)
- [Executive Orders, Directives & FAQs](#)

[Read more about Michigan's response >](#)

CLICK TO SUBSCRIBE TO NEWS UPDATES:

- [COVID-19 Updates from MDHHS](#)
- [News Releases from the State Emergency Operations Center](#)
- [News Releases from the Executive Office of the Governor](#)

Questions About COVID-19?



Call the COVID-19 Hotline at 888-535-6136,
7 days a week from 8 a.m. to 5 p.m.



Email COVID19@michigan.gov 24/7. Emails
will be answered 7 days a week, 8 a.m. to 5 p.m.



Subscribe to e-newsletter updates
at Michigan.gov/Coronavirus.



For Residents & Communities



For Health Care Professionals



For Childcare & School Admins



For Employers & Workers

MICHIGAN DATA

Today's numbers will be delayed and posted as soon as available.

LATEST MICHIGAN NEWS

- › [Vital Funding for State's Small Businesses Gains Michigan Strategic Fund Support](#)
- › [AG Nessel: Scammers Are Spoofing Health Department Phone Numbers Seeking Medicaid, Medicare Information](#)
- › [DNR Closes Shooting Ranges, Restricts Access at Offices to Appointment Only](#)
- › [Nessel Takes Action Against Online Retailer as COVID-19 Price-gouging Complaints Rise](#)
- › [Michigan National Guard assisting in getting out COVID-19 supplies](#)
- › [Pure Michigan Business Connect offering virtual, statewide matchmaking platform for suppliers, buyers providing critical response to COVID-19](#)
- › [State Provides Guidance to Employers Contemplating Potential Layoffs](#)
- › [Blue Water Bridge and International Bridge Remain Open to Traffic](#)

MORE CORONAVIRUS NEWS

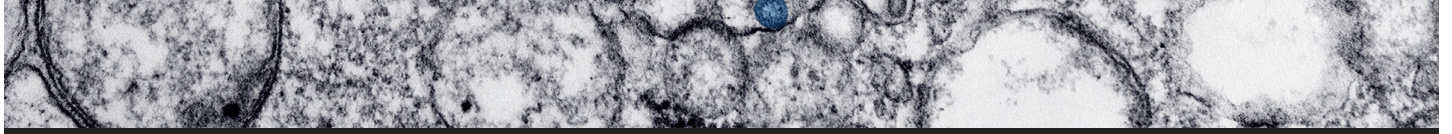


GET THE LATEST CORONAVIRUS UPDATES FROM CDC.GOV

Content below is provided and maintained by the

US Centers for Disease Control and
Prevention

(CDC).



[MICHIGAN.GOV HOME](#)

[ADA](#)

[MICHIGAN NEWS](#)

[POLICIES](#)

COPYRIGHT 2020 STATE OF MICHIGAN