

## Coronavirus Disease 2019 (COVID-19)

### What Michigan is Doing

On Tuesday, March 10, Michigan's Governor Whitmer declared a state of emergency as the state's first positive cases of COVID-19 were identified. The emergency declaration enables the state to quickly deploy resources (equipment, supplies and/or personnel) to local jurisdictions to support their response efforts in combatting the spread of COVID-19. The declaration places Michigan at a heightened state of preparedness for response. All Michiganders are encouraged to follow the recommendations from MDHHS and the CDC to protect themselves and slow the spread of COVID-19.

- [Community Mitigation Strategies](#)
- [Executive Orders, Directives & FAQs](#)

[Read more about Michigan's response >](#)

### CLICK TO SUBSCRIBE TO NEWS UPDATES:

- [COVID-19 Updates from MDHHS](#)
- [News Releases from the State Emergency Operations Center](#)
- [News Releases from the Executive Office of the Governor](#)

### Questions About COVID-19?



Call the COVID-19 Hotline at 888-535-6136,  
7 days a week from 8 a.m. to 5 p.m.



Email [COVID19@michigan.gov](mailto:COVID19@michigan.gov) 24/7. Emails  
will be answered 7 days a week, 8 a.m. to 5 p.m.



Subscribe to e-newsletter updates  
at [Michigan.gov/Coronavirus](https://Michigan.gov/Coronavirus).



For Residents & Communities



For Health Care Professionals



For Childcare



For Employers & Workers

## MICHIGAN DATA

### Daily Confirmed COVID-19 Cases by County

| County       | Cases      | Deaths   |
|--------------|------------|----------|
| Detroit City | 74         | 2        |
| Genesee      | 1          |          |
| Ingham       | 1          |          |
| Kent         | 5          |          |
| Livingston   | 2          |          |
| Macomb       | 31         |          |
| Midland      | 2          |          |
| Monroe       | 1          |          |
| Oakland      | 79         |          |
| St. Clair    | 3          |          |
| Washtenaw    | 2          |          |
| Wayne        | 23         |          |
| Out of State | 1          |          |
| <b>Total</b> | <b>225</b> | <b>2</b> |

*City of Detroit and Wayne County are reported separately.*

**This information is updated daily at 2 p.m.**, with COVID-19 positive results as of 10 a.m. To view overall totals click on the cumulative data button below.

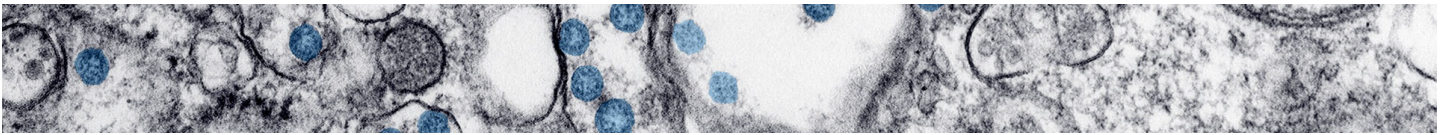
[SEE CUMULATIVE DATA](#)

## LATEST MICHIGAN NEWS

› [Blue Water Bridge and International Bridge Travel Restrictions in Effect Beginning at Midnight](#)

- › [Treasury: Michiganders Unemployed Due to COVID-19 Eligible for Collections Assistance](#)
- › [Governor Whitmer Signs Executive Order Temporarily Suspending Evictions](#)
- › [Governor Whitmer Signs Executive Order Clarifying Restrictions on Price Gouging](#)
- › [Governor Whitmer Orders Temporary Restrictions on Non-Essential Medical and Dental Procedures](#)
- › [UPDATED: MDHHS Announces Additional Test Results from Commercial and Clinical Labs in Today's Case Count](#)
- › [Michigan Distillers Cleared to Produce Hand Sanitizer to Help with COVID-19 Response](#)
- › [AG's Office Receives New COVID-19 Scam Report, More Than 800 Price-gouging Complaints](#)

## MORE CORONAVIRUS NEWS

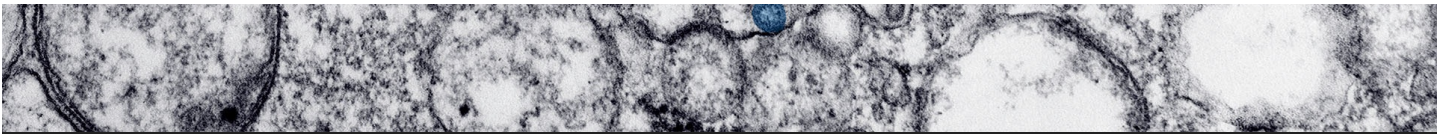


## GET THE LATEST CORONAVIRUS UPDATES FROM CDC.GOV

Content below is provided and maintained by the

US Centers for Disease Control and  
Prevention

(CDC).



MICHIGAN.GOV HOME  
ADA  
MICHIGAN NEWS  
POLICIES

COPYRIGHT 2020 STATE OF MICHIGAN