

Coronavirus Disease 2019 (COVID-19)

What Michigan is Doing

On Tuesday, March 10, Michigan's Governor Whitmer declared a state of emergency as the state's first positive cases of COVID-19 were identified. The emergency declaration enables the state to quickly deploy resources (equipment, supplies and/or personnel) to local jurisdictions to support their response efforts in combatting the spread of COVID-19. The declaration places Michigan at a heightened state of preparedness for response. All Michiganders are encouraged to follow the recommendations from MDHHS and the CDC to protect themselves and slow the spread of COVID-19.

- [Community Mitigation Strategies](#)
- [Executive Orders, Directives & FAQs](#)

[Read more about Michigan's response >](#)

CLICK TO SUBSCRIBE TO NEWS UPDATES:

- [COVID-19 Updates from MDHHS](#)
- [News Releases from the State Emergency Operations Center](#)
- [News Releases from the Executive Office of the Governor](#)

Questions About COVID-19?



Call the COVID-19 Hotline at 888-535-6136,
7 days a week from 8 a.m. to 5 p.m.



Email COVID19@michigan.gov 24/7. Emails
will be answered 7 days a week, 8 a.m. to 5 p.m.



Subscribe to e-newsletter updates
at Michigan.gov/Coronavirus.



For Residents & Communities



For Health Care Professionals



For Childcare



For Employers & Workers

MICHIGAN DATA

Daily Confirmed COVID-19 Cases by County

County	Cases	Deaths
Barry	1	
Berrien	2	
Calhoun	1	
Clare	1	
Clinton	1	
Detroit City	99	1
Genesee	6	
Ingham	4	
Kent	9	
Livingston	3	
Macomb	15	
Oakland	45	1
Ottawa	1	
Saginaw	1	
Tuscola	1	
Washtenaw	13	
Wayne	34	
Wexford	1	
Total	238	2

City of Detroit and Wayne County are reported separately.

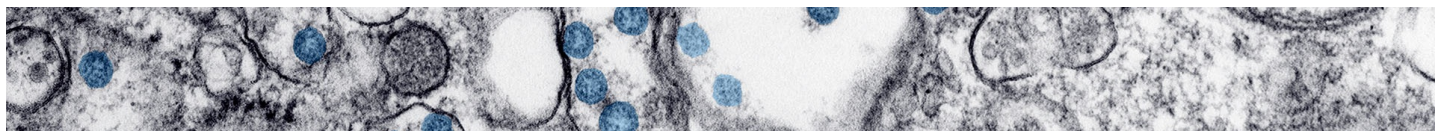
This information is updated daily at 2 p.m, with COVID-19 results as of 10 a.m. To view overall totals click on the cumulative data button below.

[SEE CUMULATIVE DATA](#)

LATEST MICHIGAN NEWS

- › [Secretary of State offices returning to regular weekday hours; further streamlining critical services](#)
- › [Blue Water Bridge and International Bridge Travel Restrictions in Effect Beginning at Midnight](#)
- › [Treasury: Michiganders Unemployed Due to COVID-19 Eligible for Collections Assistance](#)
- › [Governor Whitmer Orders Temporary Restrictions on Non-Essential Medical and Dental Procedures](#)
- › [Governor Whitmer Signs Executive Order Temporarily Suspending Evictions](#)
- › [Governor Whitmer Signs Executive Order Clarifying Restrictions on Price Gouging](#)
- › [Governor Whitmer, DeWine Urge President Trump, Congress to Support Auto Industry, Protect Jobs](#)
- › [UPDATED: MDHHS Announces Additional Test Results from Commercial and Clinical Labs in Today's Case Count](#)

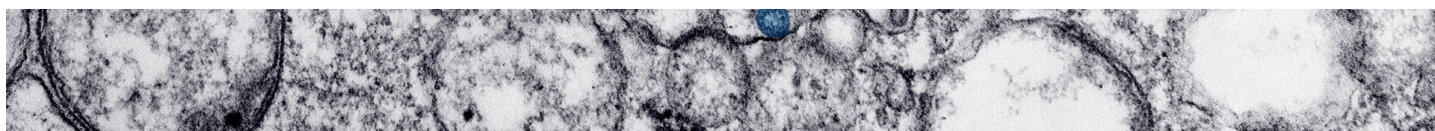
MORE CORONAVIRUS NEWS



GET THE LATEST CORONAVIRUS UPDATES FROM CDC.GOV

Content below is provided and maintained by the

[US Centers for Disease Control and Prevention](#) (CDC).



[MICHIGAN.GOV HOME](#)
[ADA](#)
[MICHIGAN NEWS](#)
[POLICIES](#)

COPYRIGHT 2020 STATE OF MICHIGAN