

Coronavirus Disease 2019 (COVID-19)

What Michigan is Doing

On Tuesday, March 10, Michigan's Governor Whitmer declared a state of emergency as the state's first positive cases of COVID-19 were identified. The emergency declaration enables the state to quickly deploy resources (equipment, supplies and/or personnel) to local jurisdictions to support their response efforts in combatting the spread of COVID-19. The declaration places Michigan at a heightened state of preparedness for response. All Michiganders are encouraged to follow the recommendations from MDHHS and the CDC to protect themselves and slow the spread of COVID-19.

- [Community Mitigation Strategies](#)
- [Executive Orders, Directives & FAQs](#)

[Read more about Michigan's response >](#)

CLICK TO SUBSCRIBE TO NEWS UPDATES:

- [COVID-19 Updates from MDHHS](#)
- [News Releases from the State Emergency Operations Center](#)
- [News Releases from the Executive Office of the Governor](#)

Questions About COVID-19?



Call the COVID-19 Hotline at 888-535-6136,
7 days a week from 8 a.m. to 5 p.m.



Email COVID19@michigan.gov 24/7. Emails
will be answered 7 days a week, 8 a.m. to 5 p.m.



Subscribe to e-newsletter updates
at Michigan.gov/Coronavirus.



For Residents & Communities



For Health Care Professionals



For Childcare



For Employers & Workers

MICHIGAN DATA

Daily Confirmed COVID-19 Cases by County

County	Cases	Deaths
Barry	1	
Berrien	2	
Calhoun	1	
Clare	1	
Clinton	1	
Detroit City	99	1
Genesee	6	
Ingham	4	
Kent	9	
Livingston	3	
Macomb	15	
Oakland	45	1
Ottawa	1	
Saginaw	1	
Tuscola	1	
Washtenaw	13	
Wayne	34	
Wexford	1	
Total	238	2

City of Detroit and Wayne County are reported separately.

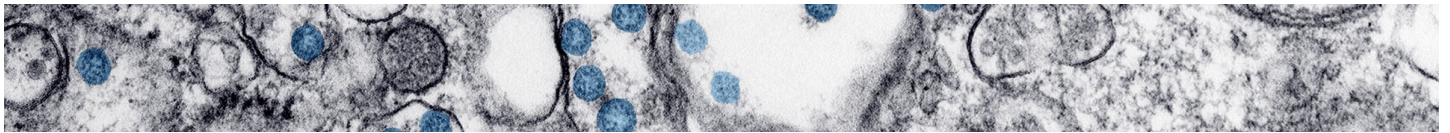
This information is updated daily at 2 p.m, with COVID-19 results as of 10 a.m. To view overall totals click on the cumulative data button below.

[SEE CUMULATIVE DATA](#)

LATEST MICHIGAN NEWS

- › Secretary of State offices returning to regular weekday hours; further streamlining critical services
- › Blue Water Bridge and International Bridge Travel Restrictions in Effect Beginning at Midnight
- › Treasury: Michiganders Unemployed Due to COVID-19 Eligible for Collections Assistance
- › Governor Whitmer Orders Temporary Restrictions on Non-Essential Medical and Dental Procedures
- › Governor Whitmer Signs Executive Order Temporarily Suspending Evictions
- › Governor Whitmer Signs Executive Order Clarifying Restrictions on Price Gouging
- › Governor Whitmer, DeWine Urge President Trump, Congress to Support Auto Industry, Protect Jobs
- › UPDATED: MDHHS Announces Additional Test Results from Commercial and Clinical Labs in Today's Case Count

MORE CORONAVIRUS NEWS

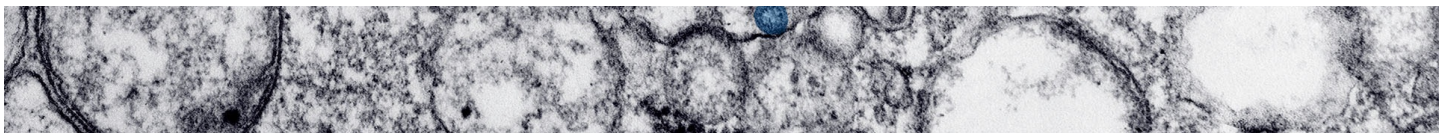


GET THE LATEST CORONAVIRUS UPDATES FROM CDC.GOV

Content below is provided and maintained by the

US Centers for Disease Control and
Prevention

(CDC).



MICHIGAN.GOV HOME
ADA
MICHIGAN NEWS
POLICIES

COPYRIGHT 2020 STATE OF MICHIGAN