

## Coronavirus Disease 2019 (COVID-19)

A graphic with a dark blue background. The text "STAY HOME." is in large white letters, with a white house icon containing a silhouette of Michigan. Below it, "STAY SAFE. SAVE LIVES." is written in white on a white rectangular background.

**STAY HOME.**  
**STAY SAFE. SAVE LIVES.**

[Click here for a summary of the Stay Home, Stay Safe order](#)

[Guidance for Business](#)

- [Executive Orders, Directives & FAQs](#)

[Read more about Michigan's response >](#)

### **CLICK TO SUBSCRIBE TO NEWS UPDATES:**

- [COVID-19 Updates from MDHHS](#)
- [News Releases from the State Emergency Operations Center](#)
- [News Releases from the Executive Office of the Governor](#)

### **Quick links**

- [Apply for unemployment benefits](#)
- [Apply for assistance with health insurance, food, and other needs](#)
- [Find resources in your local community](#)
- [Locate your local school meal pickup site](#)
- [Resources for small businesses](#)
- [Contact the U.S. Disaster Distress Hotline for 24/7 crisis counseling](#)



**For Residents & Communities**



**For Health Care Professionals**



**For Childcare**



**For Employers & Workers**

Posted 3/26/2020

**Daily Confirmed COVID-19 Cases by County**

<b>County</b>	<b>Cases</b>	<b>Deaths</b>
Bay	1	
Berrien	1	
Calhoun	1	
Cass	1	
Clinton	1	
Detroit City	146	3
Eaton	1	
Genesee	17	1
Hillsdale	3	
Ingham	4	
Ionia	2	
Isabella	1	
Jackson	5	
Kalamazoo	5	
Kent	5	
Lapeer	2	
Lenawee	2	
Livingston	5	
Macomb	66	4
Mecosta	1	1

County	Cases	Deaths
Missaukee	1	
Monroe	3	
Montcalm	1	
Oakland	125	5
Oceana	1	
Ogema	1	
Otsego	1	
Ottawa	2	
Saginaw	1	
Shiawassee	1	
St. Clair	3	
Tuscola		1
Washtenaw	20	
Wayne	121	2
Other*	13	
<b>Total</b>	<b>564</b>	<b>17</b>

City of Detroit and Wayne County are reported separately.

\*MDOC cases

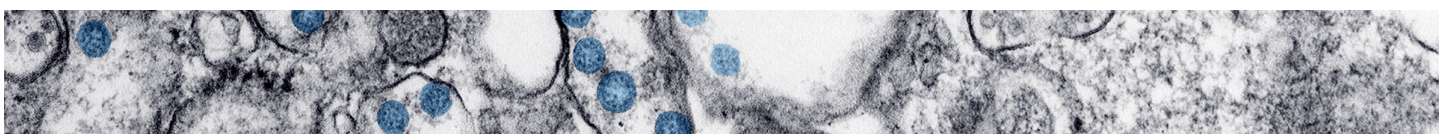
**The daily totals are updated each day at 2 p.m.**, with single day COVID-19 results as of 10 a.m. To view overall totals click on the cumulative data button below.

[SEE CUMULATIVE DATA](#)

## LATEST MICHIGAN NEWS

- › [During Covid-19 Emergency Response, Food Workers and Inspectors Continue Critical Work](#)
- › [Effective March 27, MDOT Will Not Accept Cash Transactions for Eastbound Blue Water Bridge Customers](#)
- › [AG Nessel Provides Guidance on Executive Orders Violations](#)
- › [Pure Michigan Invites Fans to Experience the State Virtually](#)
- › [Pure Michigan Business Connect Updates Virtual, Statewide Matchmaking Platform for Critical COVID-19 Response Efforts](#)
- › [MDE to Request Federal Waiver for Child Nutrition Programs](#)
- › [Food Service to Children Continues Through the "Stay Home" Order](#)
- › [UIA Offers Update on Unemployment System, Provides Tips to Get Help as Soon as Possible](#)

## MORE CORONAVIRUS NEWS

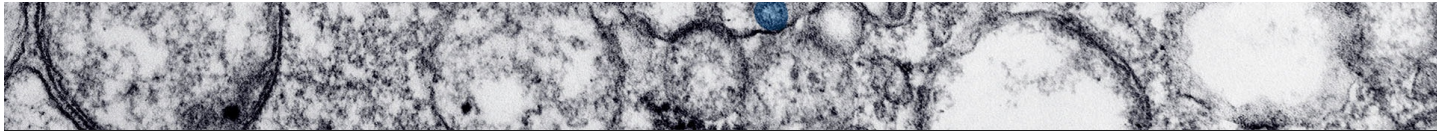


**GET THE LATEST CORONAVIRUS UPDATES FROM CDC.GOV**

Content below is provided and maintained by the

US Centers for Disease Control and  
Prevention

(CDC).



[MICHIGAN.GOV HOME](#)

[ADA](#)

[MICHIGAN NEWS](#)

[POLICIES](#)

**COPYRIGHT 2020 STATE OF MICHIGAN**