

## Coronavirus Disease 2019 (COVID-19)

**STAY HOME.**  
**STAY SAFE. SAVE LIVES.**

[Click here for a summary of the Stay Home, Stay Safe order](#)

[Guidance for Business](#)

- [Executive Orders, Directives & FAQs](#)

[Read more about Michigan's response >](#)

### CLICK TO SUBSCRIBE TO NEWS UPDATES:

- [COVID-19 Updates from MDHHS](#)
- [News Releases from the State Emergency Operations Center](#)
- [News Releases from the Executive Office of the Governor](#)



[For Residents & Communities](#)



[For Health Care Professionals](#)



[For Childcare](#)



For Employers & Workers

### Quick links

- [COVID-19 Volunteering and Donations](#)
- [Apply for unemployment benefits](#)
- [Apply for assistance with health insurance, food, and other needs](#)
- [Find resources in your local community](#)
- [Locate your local school meal pickup site](#)
- [Resources for small businesses](#)
- [Contact the U.S. Disaster Distress Hotline for 24/7 crisis counseling](#)

## LATEST MICHIGAN NEWS

- › [Seniors can get meals safely in Michigan during COVID-19 outbreak; State wants to increase public awareness of meals program](#)
- › [AG's Office, Kalamazoo County Prosecutor Send Cease and Desist Letter to Car Wash Violating Executive Order](#)
- › [State Expands Support Services Available for Startups, Entrepreneurs in Response to COVID-19](#)
- › [MILogin Unavailable Friday Evening for Maintenance and Upgrades, Will be Back Up Saturday Morning](#)
- › [Nessel's Office Tells Businesses to Stop Selling Fake COVID-19 Test Kits](#)
- › [Governor Whitmer Signs Executive Order Protecting Workers Who Stay Home, Stay Safe When They or Their Close Contacts Are Sick](#)
- › [MDHHS issues Emergency Order requiring compliance with Executive Orders under penalty of civil fines up to \\$1,000 and referral to licensing agencies for enforcement](#)
- › [Three U.P. Businesses Comply with Stay Home, Stay Safe Order After AG's Office Sends Cease and Desist Letters](#)
- › [Governor Whitmer Signs Executive Order Suspending Face-to-Face Learning at K-12 Schools for Remainder of School Year](#)

[MORE CORONAVIRUS NEWS](#)

## WHERE WE STAND WITH COVID-19

The State of Michigan is working around the clock to test and treat COVID-19 patients. Below is the most recent data healthcare experts across the state have compiled. It is updated daily.

Total Confirmed Cases

**12,744**

Total COVID-19 Deaths

**479**

Daily Confirmed Cases

**1,953**

Daily COVID-19 Deaths

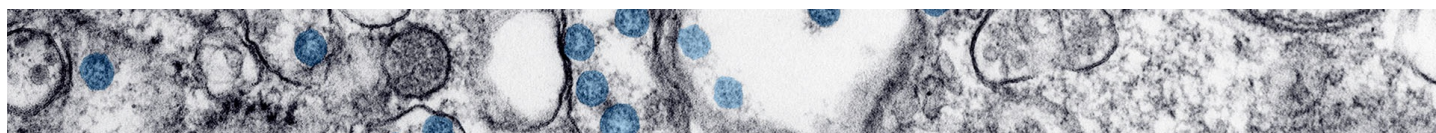
**62**

*Updated 4/3/2020*

City of Detroit and Wayne County are reported separately.

\*MDOC Cases

[SEE CUMULATIVE DATA](#)

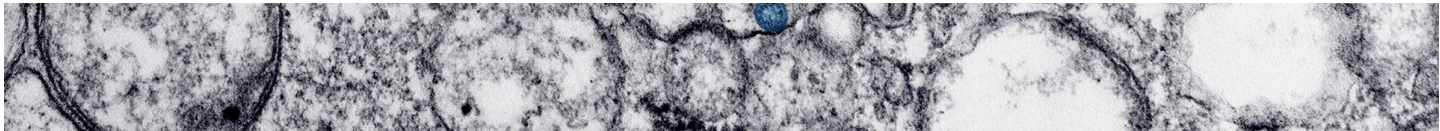


**GET THE LATEST CORONAVIRUS UPDATES FROM CDC.GOV**

Content below is provided and maintained by the

US Centers for Disease Control and  
Prevention

(CDC).



[MICHIGAN.GOV HOME](#)

[ADA](#)

[MICHIGAN NEWS](#)

[POLICIES](#)

**COPYRIGHT 2020 STATE OF MICHIGAN**