

[Subscribe: COVID-19 updates](#)

Sign up to receive email or mobile alerts when this data is updated, as well as other periodic COVID-19 updates.

Data is for cases that were tested and returned positive. Numbers are cumulative since Jan. 20, 2020. All data are preliminary and may change as cases are investigated. Many data points are collected during case interviews. Data presented below are for all cases, regardless of interview status. Data for cases pending interview may be listed as “unknown/missing”.

Not all suspected cases of COVID-19 are tested, so this data is not representative of the total number of people in Minnesota who have or had COVID-19.

Updated May 8, 2020.
Updated daily at 11 a.m., with data current as of 4 p.m. the previous day.
Data for April 12 was as of 8 p.m. the previous day.

Dates provided are those when the case, hospitalization, or death was first posted in this situation report.

- On this page:
- [Testing](#)
 - [Minnesota Case Overview](#)
 - [Hospitalization](#)
 - [Case Demographics](#)
 - [Likely Exposure](#)
 - [Residence](#)
 - [Care Facilities](#)

[Expand All](#) [Contract All](#)

Testing

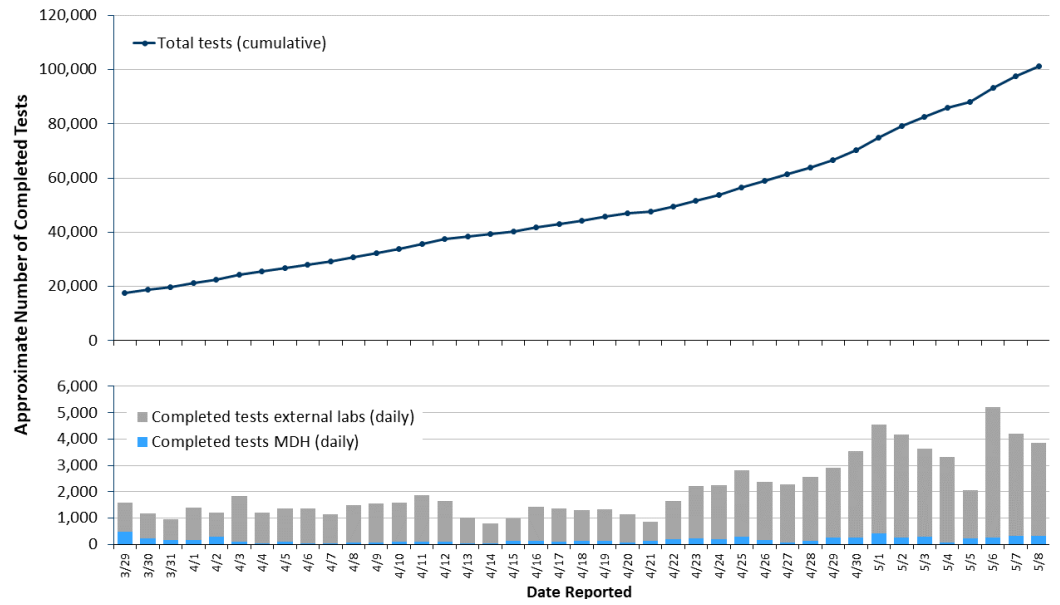
Guidance Library

Total approximate number of completed tests: 101,270

Related Topics

Supporting Mental Well-being During COVID-19 Research Studies in Minnesota Infectious Respirator

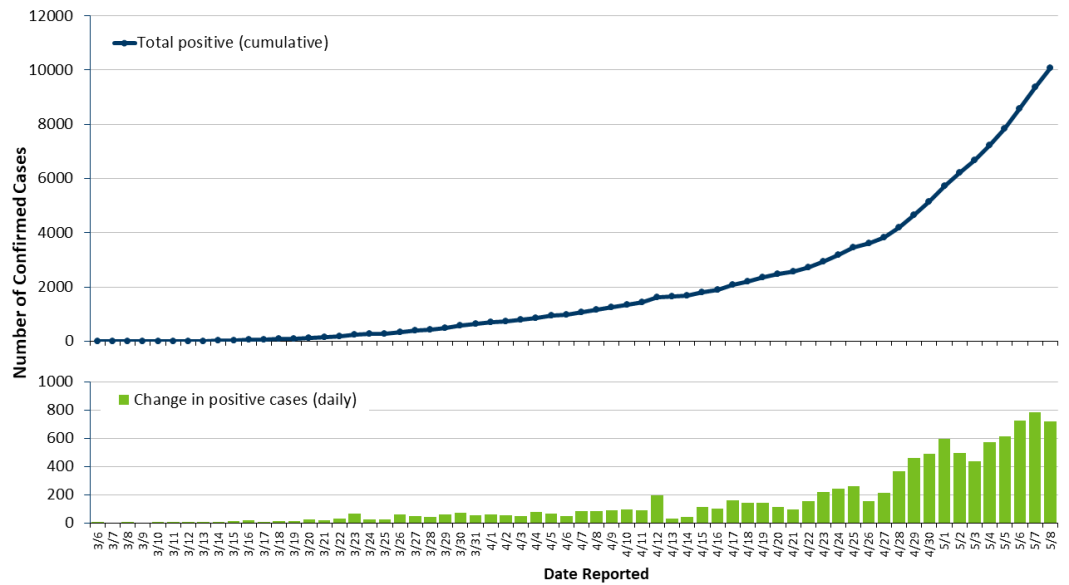
- Total approximate number of completed tests from the MDH Public Health Lab: 14,397
- Total approximate number of completed tests from external laboratories: 86,873



[Testing data table](#)

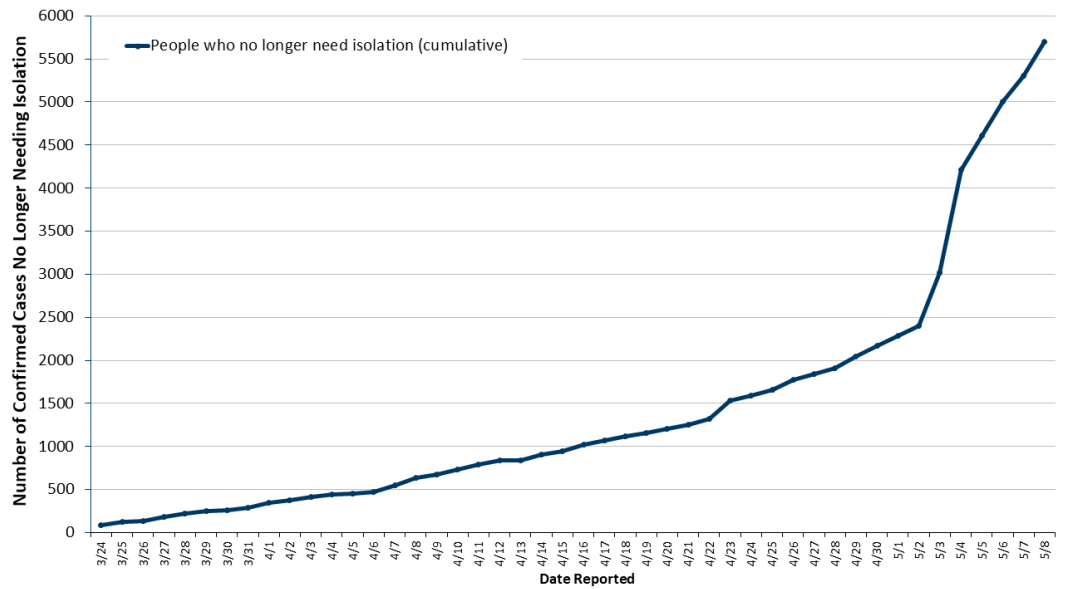
Minnesota Case Overview

- Total positive: 10,088
 - Number of health care workers: 1,270



[Positive case data table](#)

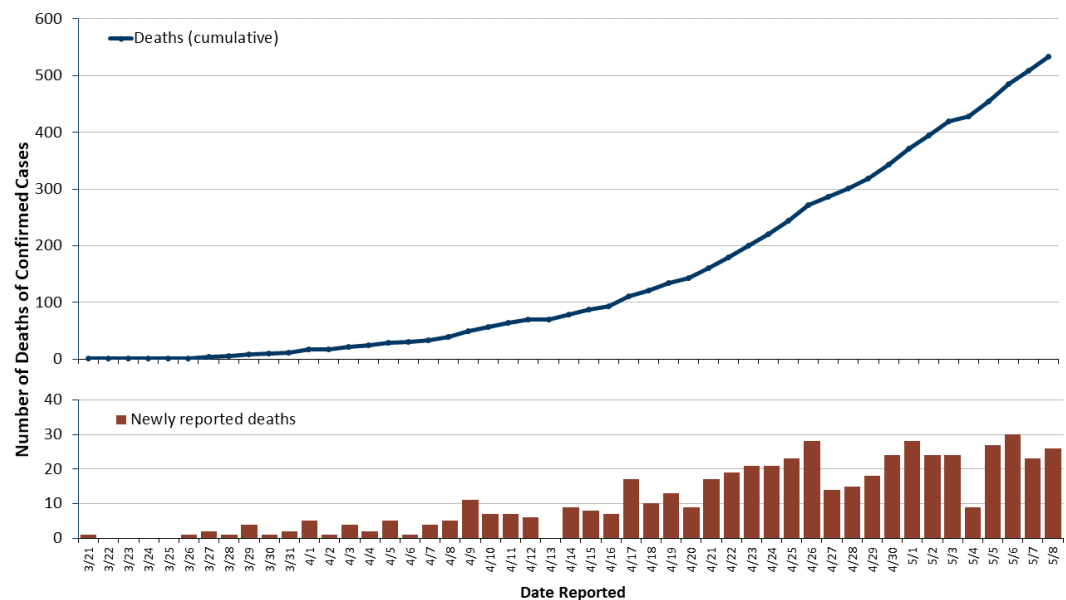
- Patients no longer needing isolation: 5,697



[No longer needing isolation data table](#)

Patients no longer needing isolation represents individuals with confirmed COVID-19 who no longer need to self-isolate, including those who have died.

- Deaths: 534
 - Deaths among cases that resided in long-term care or assisted living facilities: 434



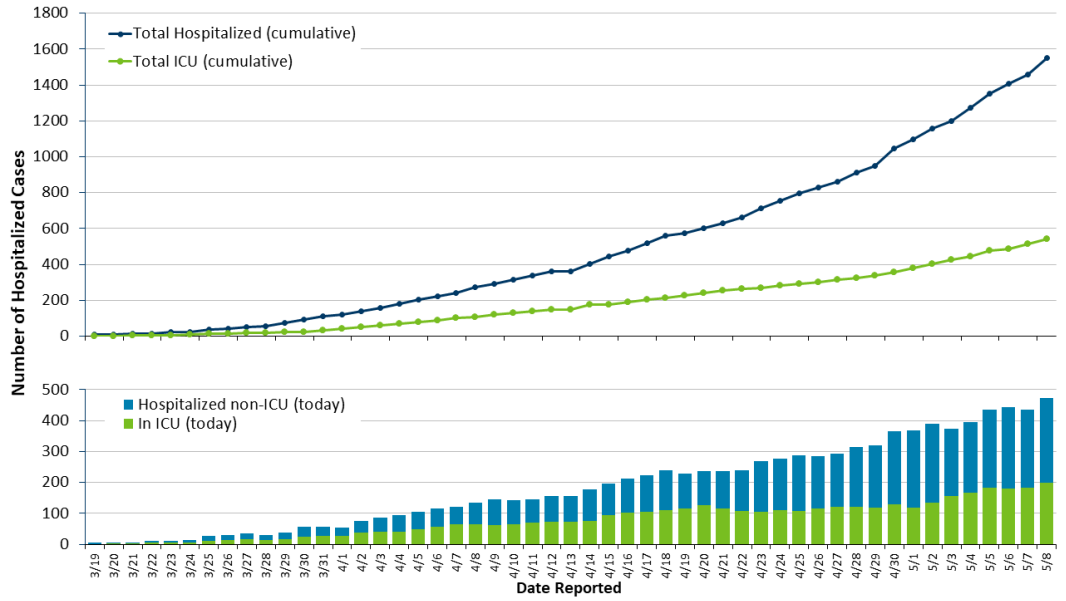
[Deaths data table](#)

[Detail on newly reported deaths](#)

Hospitalization

Total cases requiring hospitalization: 1,549

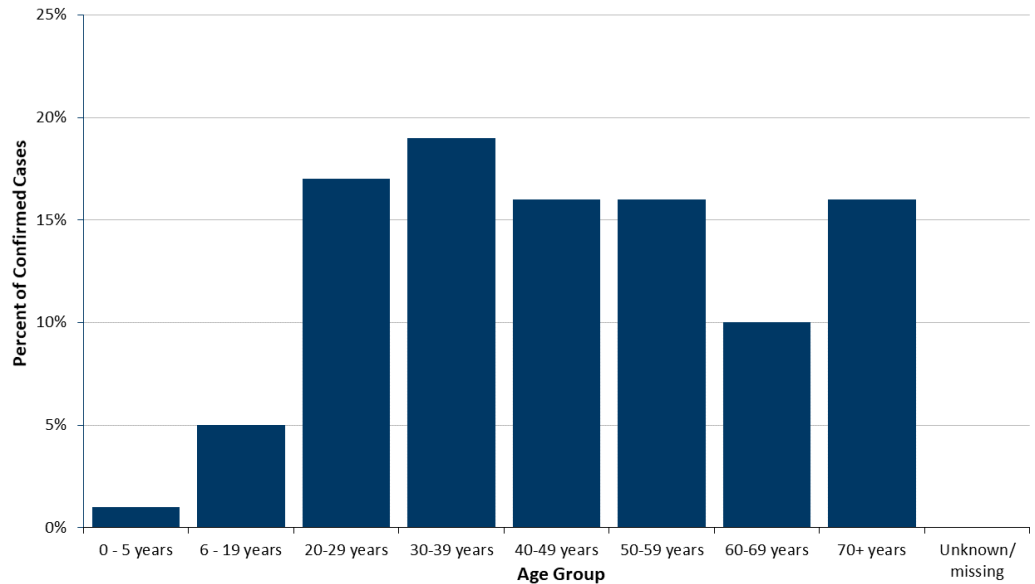
- Hospitalized as of today: 473
 - Hospitalized in ICU as of today: 198



[Hospitalization data table](#)

Case Demographics

Age



[Age group data table:](#)

[Including age group of deaths](#)

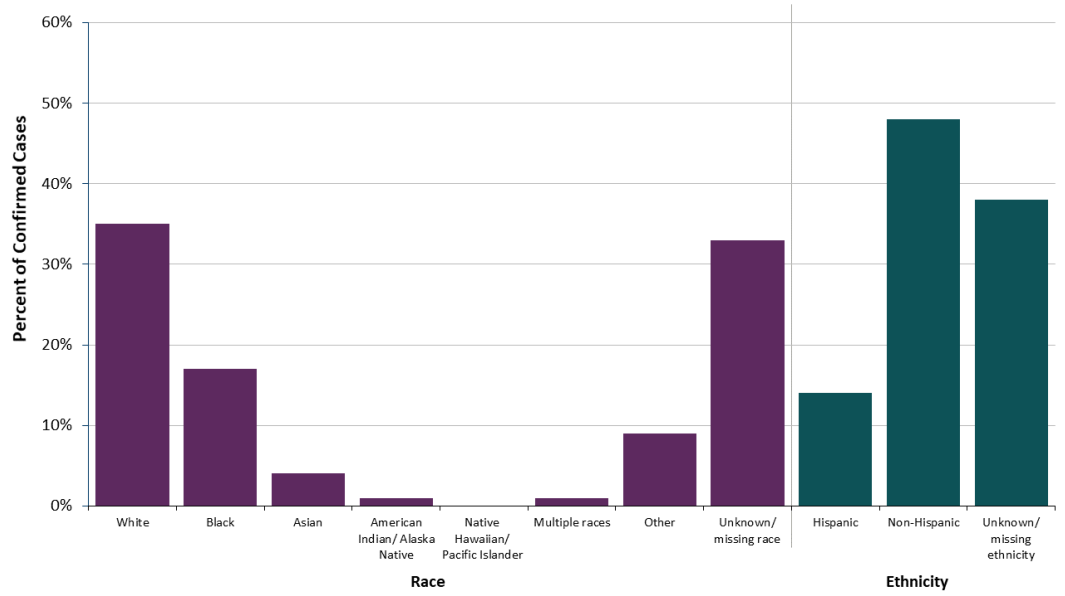
[More age data: Age median and range \(all cases, non-hospitalized, hospitalized and deaths\)](#)

Gender

- 49% female, 49% male, <1% other, 2% unknown/missing

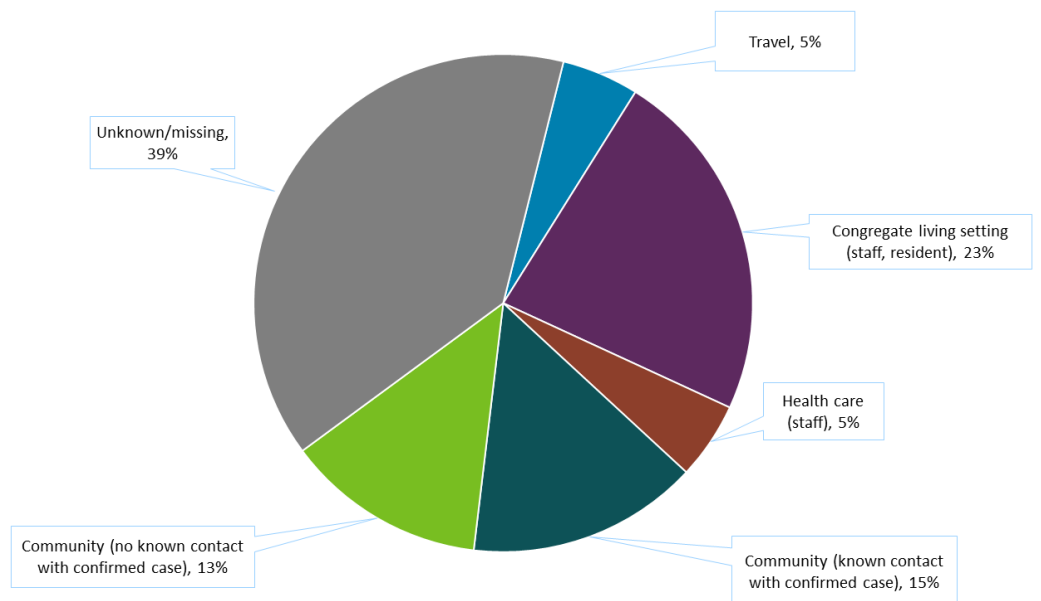
Percentages have been rounded.

Race & Ethnicity



[Race and ethnicity data table:](#)
[Including race and ethnicity of deaths](#)

Likely Exposure



[Likely exposure data table](#)

Not all cases among health care workers have a likely exposure as health care staff.

Residence

Cases by County of Residence

County of residence is confirmed during the case interview. At the time of this posting not all interviews have been completed. The county residence data may not equal the total number of reported positive cases.

[County of residence data table:
Including county of residence of deaths](#)



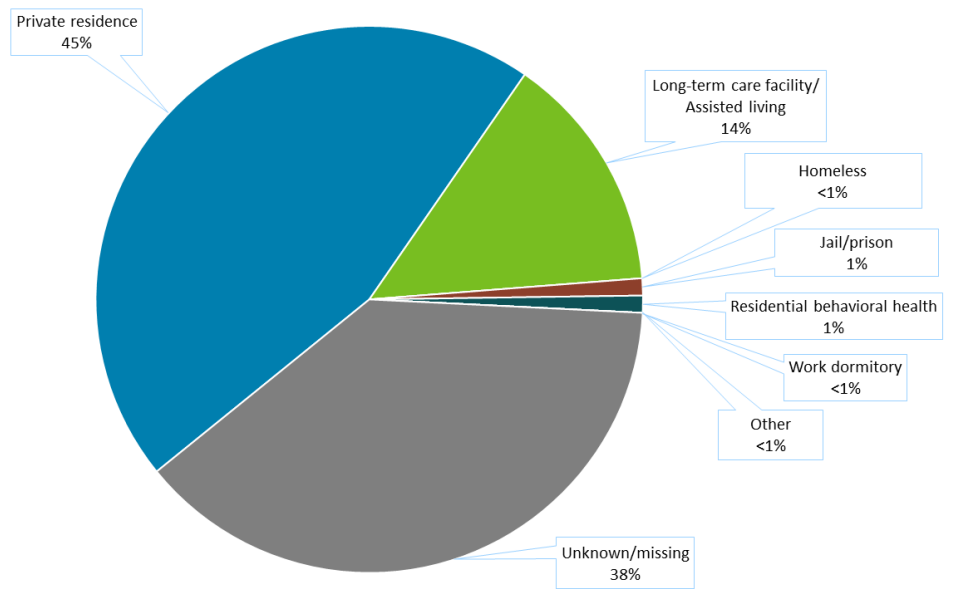
[More about location data](#)



[How to use the interactive map](#)



Residence Type



[Residence type data table](#)

- [MN DOC: COVID-19 Testing of People Incarcerated in MN Prisons](#)

Care Facilities

[Congregate Care Facilities with Exposures, by County](#)

- [Minnesota COVID-19 Public Dashboard](#)
- [Minnesota's COVID-19 Response and Preparation Capacity](#)
- [CDC: Coronavirus Disease 2019 \(COVID-19\) Cases in the U.S.](#)
- [Minnesota COVID-19 Modeling](#)

Facemasks
and
Personal Protective
Equipment

Symptoms
and
Testing
for COVID-19

**Surgeries and
Procedures**
During COVID-19

COVID-19 Hotlines:
 Interpreters available
 Health questions:

651-201-3920 or 1-800-657-3903

8 a.m. to 6 p.m.

Schools and child care questions:

651-297-1304 or 1-800-657-3504

Weekdays: 8 a.m. to 6 p.m.

Weekend: 8 a.m. to 4 p.m.

COVID-19 information in other languages:

2019 Novel Coronavirus (Hmong)

Koronafayraska Cusub ee 2019 (Somali)

Enfermedad del Coronavirus 2019 (COVID-19) (Spanish)

American Sign Language (ASL) Videos

Contact us:

If you have questions or comments about this page, use our [IDEPC Comment Form](#) or call 651-201-5414 for the MDH [Infectious Disease Epidemiology, Prevention and Control Division](#).

[Individual & Family Health](#)

[Health Care Facilities, Providers
& Insurance](#)

[Data, Statistics and Legislation](#)

[Diseases & Conditions](#)

[Healthy Communities, Environment
& Workplaces](#)

[About MDH](#)

[Locations & Directions](#)

[Comments & Questions](#)

[Privacy Statement & Disclaimer](#)

[Equal Opportunity](#)

651-201-5000 Phone
888-345-0823 Toll-free

Information on this website is available in alternative formats upon request.

