

Sheila Hogan, Director

Children/Families

Disabilities

Seniors

Health

[Home](#) » [Public Health & Safety](#) » [Communicable Disease Epidemiology](#) » [Diseases A to Z](#) » [Coronavirus](#) » [Demographics](#)

Coronavirus Disease 2019 (COVID-19)

[Analysis of COVID-19 Cases in Montana as of 5/1/2020](#)

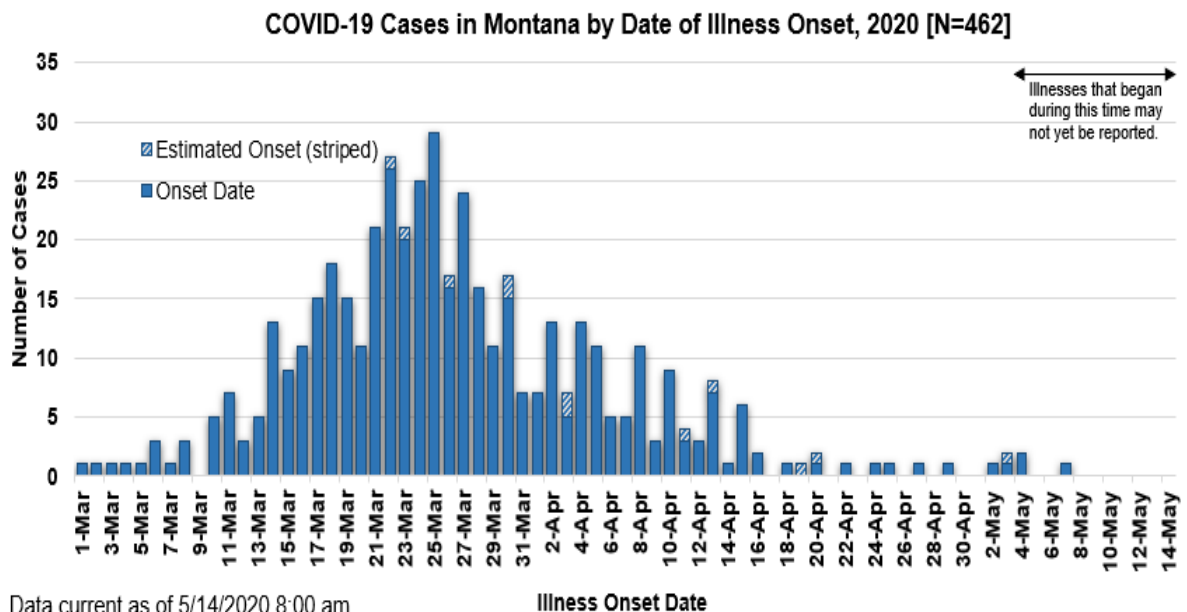
[Archive of COVID-19 Montana Analyses](#)



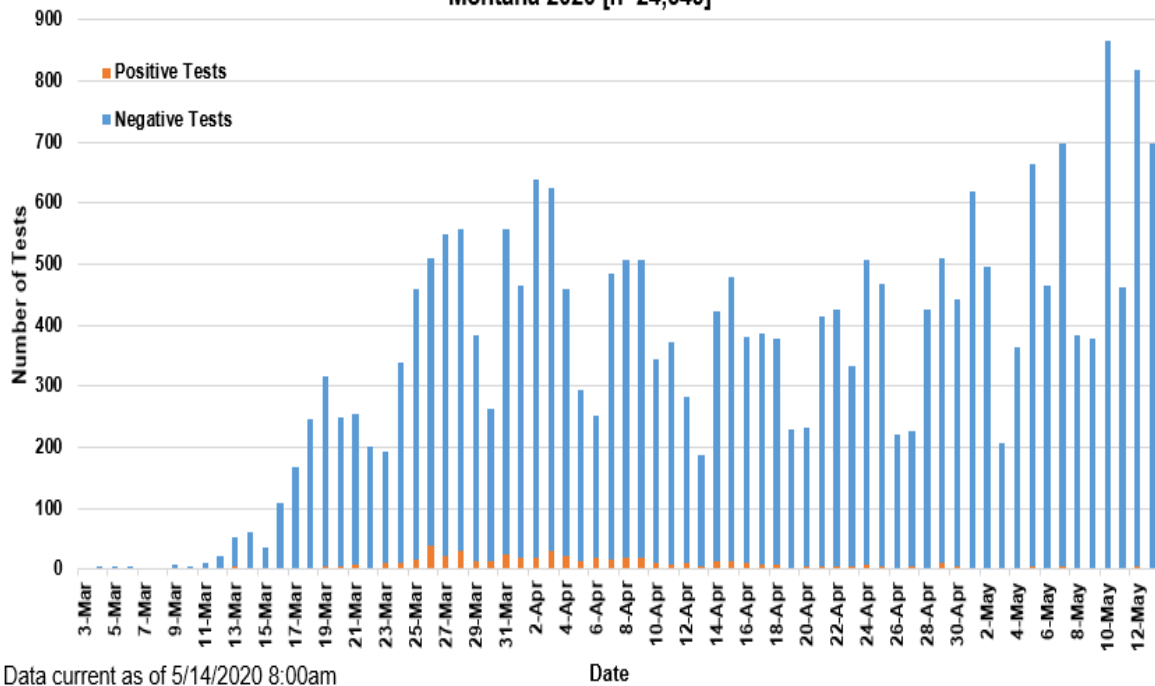
Demographic Information on Confirmed Cases

| COVID-19 Cases in Montana | |
|---------------------------|-----|
| Total Number of Cases | 462 |
| - Number of Deaths | 16 |

** Tables are updated by 10 am every morning.*



**SARS-Cov-2 Testing at Montana Public Health Laboratory and Reference Laboratories,
Montana 2020 [n=24,549]**



| County of Residence | Number of Cases | Number of Deaths | Community Transmission* |
|---------------------|-----------------|------------------|-------------------------|
| Beaverhead | 1 | | |
| Big Horn | 4 | | |
| Broadwater | 4 | | |
| Carbon | 6 | | |
| Cascade | 17 | 2 | |
| Deer Lodge | 3 | | |
| Flathead | 37 | 2 | Yes |
| Gallatin | 149 | 1 | Yes |
| Glacier | 6 | | |
| Golden Valley | 3 | | |
| Hill | 1 | | |
| Jefferson | 3 | | |
| Lake | 5 | | |
| Lewis and Clark | 16 | | Yes |
| Liberty | 1 | | |
| Lincoln | 7 | 1 | |
| Madison | 8 | 1 | |
| Meagher | 1 | | |
| Missoula | 39 | 1 | Yes |
| Musselshell | 1 | | |
| Park | 8 | | |
| Pondera | 2 | | |
| Ravalli | 5 | | |

| County of Residence | Number of Cases | Number of Deaths | Community Transmission* |
|---------------------|-----------------|------------------|-------------------------|
| Richland | 3 | | |
| Roosevelt | 7 | | |
| Silver Bow | 11 | | |
| Stillwater | 1 | | |
| Toole | 29 | 6 | |
| Wheatland | 1 | | |
| Yellowstone | 83 | 2 | Yes |
| Total | 462 | 16 | |

* Community transmission - a community has identified cases who are unable to be linked with other known cases or travel. This status has been determined after consultation between state and local health departments.

| Hospitalization Status | Number of Cases (percent of total) |
|------------------------|------------------------------------|
| Ever hospitalized | 63 (14%) |
| Not hospitalized | 399 (86%) |
| Total | 462 |

| Age Group | Number of Cases (percent of total) |
|-------------|------------------------------------|
| 0-9 years | 3 (<1%) |
| 10-19 | 13 (3%) |
| 20-29 years | 92 (20%) |
| 30-39 years | 76 (16%) |
| 40-49 years | 67 (15%) |
| 50-59 years | 85 (18%) |
| 60-69 years | 74 (16%) |
| 70-79 years | 35 (8%) |
| 80+ years | 17 (4%) |
| Total | 462 |

| Sex | Number of Cases (percent of total) |
|--------|------------------------------------|
| Female | 240 (52%) |
| Male | 222 (48%) |
| Total | 462 |

| Race and Ethnicity | Number of Cases (percent of total) |
|---|------------------------------------|
| White | 425 (92%) |
| American Indian, Alaska Native, Native Hawaiian, and Pacific Islander | 25 (5%) |
| Asian | 1 (<1%) |
| Black or African American | 2 (<1%) |
| Other Race | 4 (<1%) |
| Undetermined/Under investigation | 5 (<2%) |
| Total | 462 |
| Among those with ethnicity specified: | |
| Hispanic/Latino | 11 (<3%) |
| Not Hispanic/Latino | 430 (97%) |
| Total | 441 |

| Current Status of Cases | Number of Cases (percent of total) |
|---------------------------------------|------------------------------------|
| Hospitalized | 3 (<1%) |
| Deceased | 16 (<4%) |
| Recovering | 12 (3%) |
| Recovered and released from isolation | 431 (93%) |
| Total number of cases | 462 |

These tables include out-of-state cases who were diagnosed in Montana, as well as Montana residents whether they were diagnosed in MT or another state.



MONTANA
COMMUNICABLE
DISEASE EPIDEMIOLOGY

Communicable Disease Epidemiology Staff Listing



To submit a question or comment to the Communicable Disease Epidemiology Program, please click on the suggestion box to access our online form.

 Disease Reporting

 Data and Reports

 Contact Us

Other Program Areas

 Tuberculosis (TB)

 Healthcare Associated Infections (HAI)

 Sexually Transmitted Diseases (HIV/STD)

 Antimicrobial Resistance

 Follow DPHHS

The DPHHS CDEpi Section mission is to create, maintain, support, and strengthen routine surveillance and detection systems and epidemiological investigation processes, as well as to expand these systems and processes in response to incidents of public health significance.

Nondiscrimination Notice/Policy

Notice of Use of Protected Health Information

Disclaimer

Contact Webmaster

Language Assistance Available

**Español | Deutsch | 繁體中文 | 日本語 | Tagalog | Français | Русский | 한국어 | العربية | ไทย | Norsk |
Tiếng Việt | український | Pennsilfaanisch Deitsch | Italiano**