

Sheila Hogan, Director

Children/Families

Disabilities

Seniors

Health

[Home](#) » [Public Health & Safety](#) » [Communicable Disease Epidemiology](#) » [Diseases A to Z](#) » [Coronavirus](#) » [Demographics](#)

Coronavirus Disease 2019 (COVID-19)

[Analysis of COVID-19 Cases in Montana as of 5/1/2020](#)

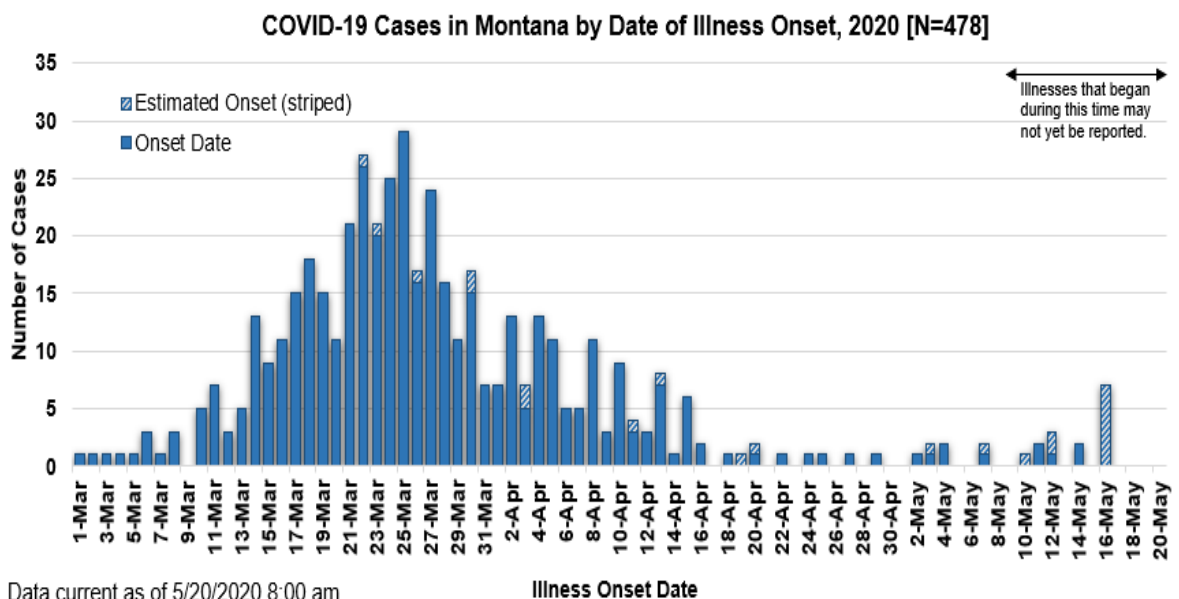
[Archive of COVID-19 Montana Analyses](#)



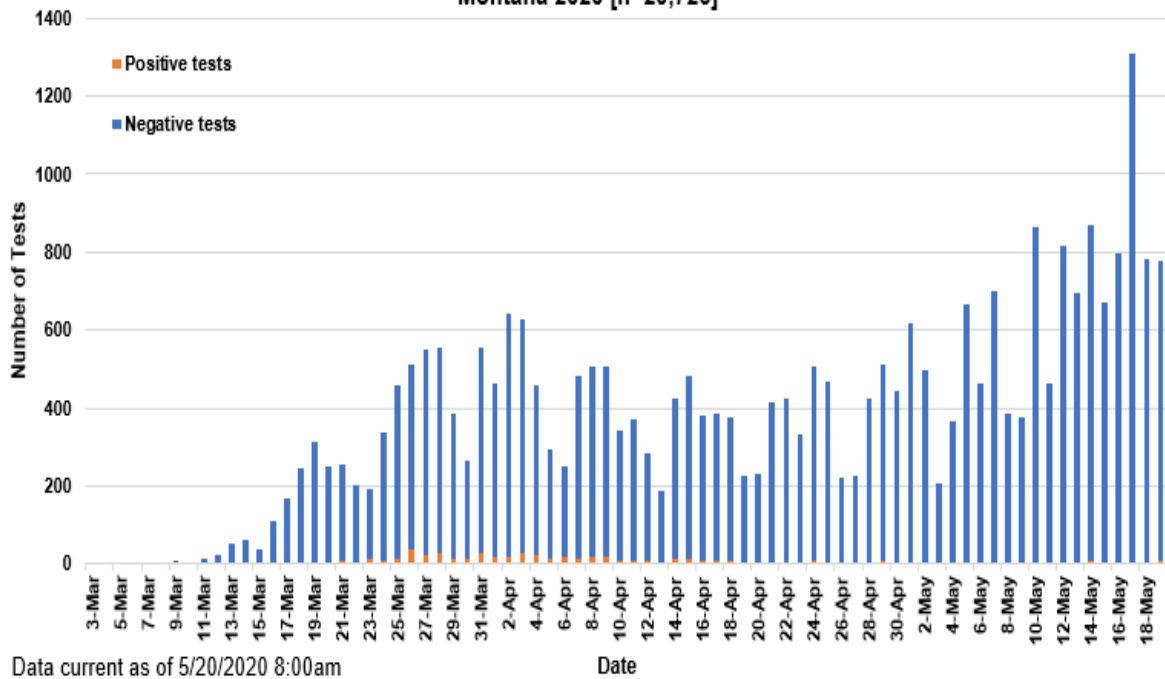
Demographic Information on Confirmed Cases

COVID-19 Cases in Montana	
Total Number of Cases	478
- Number of Deaths	16

** Tables are updated by 10 am every morning.*



**SARS-Cov-2 Testing at Montana Public Health Laboratory and Reference Laboratories,
Montana 2020 [n=29,726]**



County of Residence	Number of Cases	Number of Deaths	Community Transmission*
Beaverhead	1		
Big Horn	8		
Broadwater	4		
Carbon	6		
Cascade	17	2	
Deer Lodge	3		
Flathead	37	2	Yes
Gallatin	149	1	Yes
Glacier	6		
Golden Valley	3		
Hill	1		
Jefferson	3		
Lake	5		
Lewis and Clark	16		Yes
Liberty	1		
Lincoln	7	1	
Madison	8	1	
Meagher	1		
Missoula	39	1	Yes
Musselshell	1		
Park	8		
Pondera	2		
Ravalli	13		

County of Residence	Number of Cases	Number of Deaths	Community Transmission*
Richland	3		
Roosevelt	7		
Silver Bow	11		
Stillwater	1		
Toole	29	6	
Wheatland	1		
Yellowstone	87	2	Yes
Total	478	16	

* Community transmission - a community has identified cases who are unable to be linked with other known cases or travel. This status has been determined after consultation between state and local health departments.

Hospitalization Status	Number of Cases (percent of total)
Ever hospitalized	65 (14%)
Not hospitalized	413 (86%)
Total	478

Age Group	Number of Cases (percent of total)
0-9 years	3 (<1%)
10-19	20 (4%)
20-29 years	94 (20%)
30-39 years	77 (16%)
40-49 years	67 (14%)
50-59 years	86 (18%)
60-69 years	76 (16%)
70-79 years	37 (8%)
80+ years	18 (4%)
Total	478

Sex	Number of Cases (percent of total)
Female	244 (51%)
Male	234 (49%)
Total	478

Race and Ethnicity	Number of Cases (percent of total)
White	429 (90%)
American Indian, Alaska Native, Native Hawaiian, and Pacific Islander	29 (6%)
Asian	1 (<1%)
Black or African American	2 (<1%)
Other Race	5 (1%)
Undetermined/Under investigation	12 (<3%)
Total	478
Among those with ethnicity specified:	
Hispanic/Latino	18 (4%)
Not Hispanic/Latino	440 (96%)
Total	458

Current Status of Cases	Number of Cases (percent of total)
Hospitalized	3 (<1%)
Deceased	16 (3%)
Recovering	19 (3%)
Recovered and released from isolation	440 (92%)
Total number of cases	478

These tables include out-of-state cases who were diagnosed in Montana, as well as Montana residents whether they were diagnosed in MT or another state.



MONTANA
COMMUNICABLE
DISEASE EPIDEMIOLOGY

Communicable Disease Epidemiology Staff Listing



To submit a question or comment to the Communicable Disease Epidemiology Program, please click on the suggestion box to access our online form.

 Disease Reporting

 Data and Reports

 Contact Us

Other Program Areas

 Tuberculosis (TB)

 Healthcare Associated Infections (HAI)

 Sexually Transmitted Diseases (HIV/STD)

 Antimicrobial Resistance

 Follow DPHHS

The DPHHS CDEpi Section mission is to create, maintain, support, and strengthen routine surveillance and detection systems and epidemiological investigation processes, as well as to expand these systems and processes in response to incidents of public health significance.

Nondiscrimination Notice/Policy

Notice of Use of Protected Health Information

Disclaimer

Contact Webmaster

Language Assistance Available

**Español | Deutsch | 繁體中文 | 日本語 | Tagalog | Français | Русский | 한국어 | العربية | ไทย | Norsk |
Tiếng Việt | український | Pennsilfaanisch Deitsch | Italiano**