

**Sheila Hogan, Director**

**Children/Families**

**Disabilities**

**Seniors**

**Health**

[Home](#) » [Public Health & Safety](#) » [Communicable Disease Epidemiology](#) » [Diseases A to Z](#) » [Coronavirus](#) » [Demographics](#)

## Coronavirus Disease 2019 (COVID-19)

### [Analysis of COVID-19 Cases in Montana as of 5/1/2020](#)

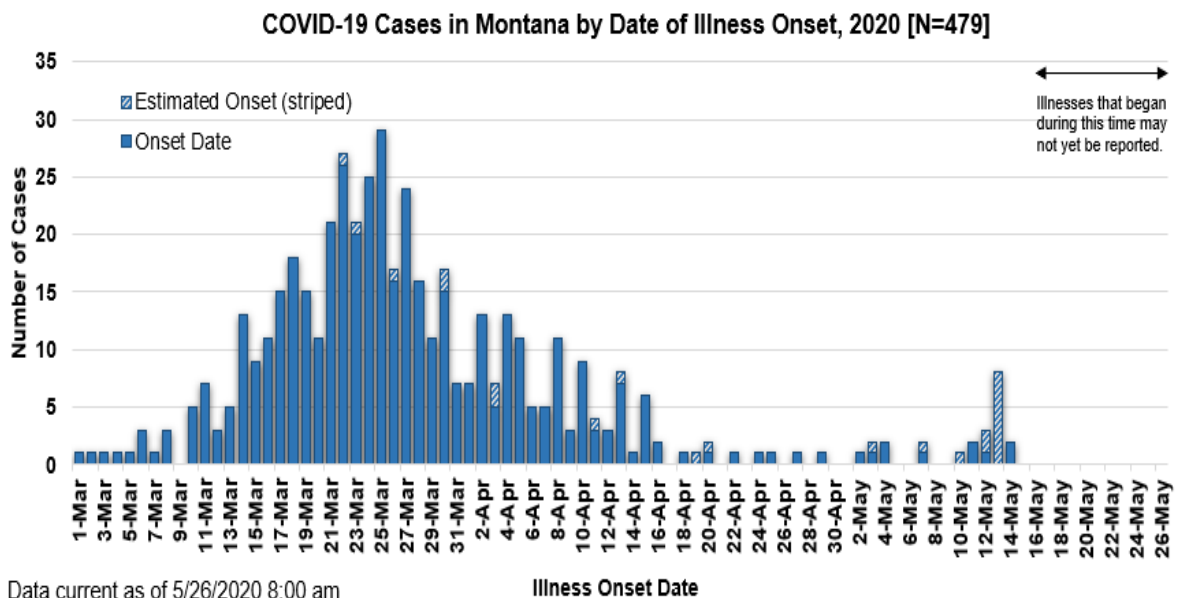
#### [Archive of COVID-19 Montana Analyses](#)



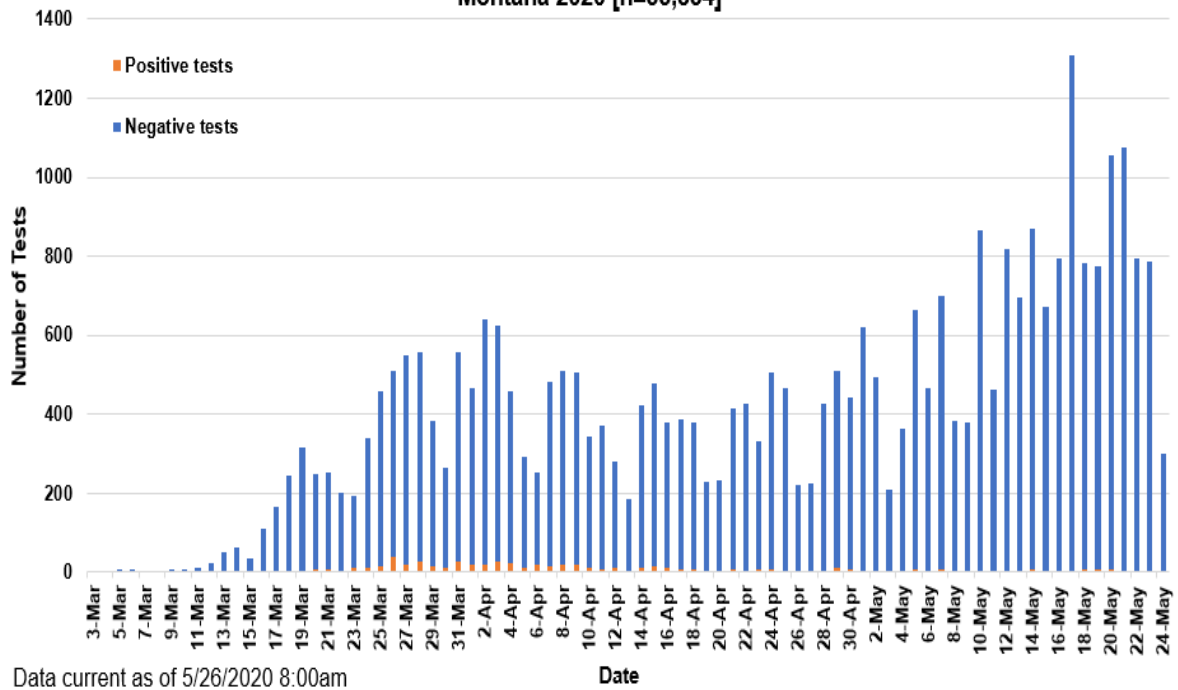
### Demographic Information on Confirmed Cases

COVID-19 Cases in Montana	
Total Number of Cases	479
- Number of Deaths	17

*\* Tables and charts are updated by 10 am every morning.*



**SARS-Cov-2 Testing at Montana Public Health Laboratory and Reference Laboratories,  
Montana 2020 [n=33,834]**



County of Residence	Number of Cases	Number of Deaths	Community Transmission*
Beaverhead	1		
Big Horn	8		
Broadwater	4		
Carbon	6		
Cascade	17	2	
Deer Lodge	3		
Flathead	37	2	Yes
Gallatin	149	1	Yes
Glacier	6		
Golden Valley	3		
Hill	1		
Jefferson	3		
Lake	5		
Lewis and Clark	16		Yes
Liberty	1		
Lincoln	7	1	
Madison	8	1	
Meagher	1		
Missoula	39	1	Yes
Musselshell	1		
Park	8		

County of Residence	Number of Cases	Number of Deaths	Community Transmission*
Pondera	2		
Ravalli	13		
Richland	3		
Roosevelt	7		
Silver Bow	11		
Stillwater	1		
Toole	29	6	
Wheatland	1		
Yellowstone	88	2	Yes
Total	479	16	

\* Community transmission - a community has identified cases who are unable to be linked with other known cases or travel. This status has been determined after consultation between state and local health departments.

Hospitalization Status	Number of Cases (percent of total)
Ever hospitalized	65 (14%)
Not hospitalized	414 (86%)
Total	479

Age Group	Number of Cases (percent of total)
0-9 years	3 (<1%)
10-19	20 (4%)
20-29 years	93 (20%)
30-39 years	77 (16%)
40-49 years	68 (14%)
50-59 years	87 (18%)
60-69 years	76 (16%)
70-79 years	37 (8%)
80+ years	18 (4%)
Total	479

Sex	Number of Cases (percent of total)
Female	244 (51%)
Male	235 (49%)

Sex	Number of Cases (percent of total)
Total	479

Race and Ethnicity	Number of Cases (percent of total)
White	437 (91%)
American Indian, Alaska Native, Native Hawaiian, and Pacific Islander	30 (6%)
Asian	1 (<1%)
Black or African American	2 (<1%)
Other Race	4 (1%)
Undetermined/Under investigation	5 (1%)
Total	479
<b>Among those with ethnicity specified:</b>	
Hispanic/Latino	19 (4%)
Not Hispanic/Latino	441 (96%)
Total	460

Current Status of Cases	Number of Cases (percent of total)
Hospitalized	2 (<1%)
Deceased	17 (3%)
Recovering	19 (4%)
Recovered and released from isolation	441 (92%)
Total number of cases	479

These tables include out-of-state cases who were diagnosed in Montana, as well as Montana residents whether they were diagnosed in MT or another state.



## Communicable Disease Epidemiology

### Staff Listing



To submit a question or comment to the Communicable Disease Epidemiology Program,

please click on the suggestion box to access our online form.

 [Diseases A-Z](#)

 [Disease Reporting](#)

 [Data and Reports](#)

 [Contact Us](#)

Other Program Areas

 [Tuberculosis \(TB\)](#)

 [Healthcare Associated Infections \(HAI\)](#)

 [Sexually Transmitted Diseases \(HIV/STD\)](#)

 [Antimicrobial Resistance](#)

 [Follow DPHHS](#)

*The DPHHS CDEpi Section mission is to create, maintain, support, and strengthen routine surveillance and detection systems and epidemiological investigation processes, as well as to expand these systems and processes in response to incidents of public health significance.*

[Nondiscrimination Notice/Policy](#)

[Notice of Use of Protected Health Information](#)

[Disclaimer](#)

[Contact Webmaster](#)

[Language Assistance Available](#)

[Español](#) | [Deutsch](#) | [繁體中文](#) | [日本語](#) | [Tagalog](#) | [Français](#) | [Русский](#) | [한국어](#) | [العربية](#) | [ไทย](#) | [Norsk](#) | [Tiếng Việt](#) | [український](#) | [Pennsilfaanisch Deutsch](#) | [Italiano](#)