

Sheila Hogan, Director

Children/Families

Disabilities

Seniors

Health

[Home](#) » [Public Health & Safety](#) » [Communicable Disease Epidemiology](#) » [Diseases A to Z](#) » [Coronavirus](#) » [Demographics](#)

Coronavirus Disease 2019 (COVID-19)

Analysis of COVID-19 Cases in Montana as of 5/29/2020

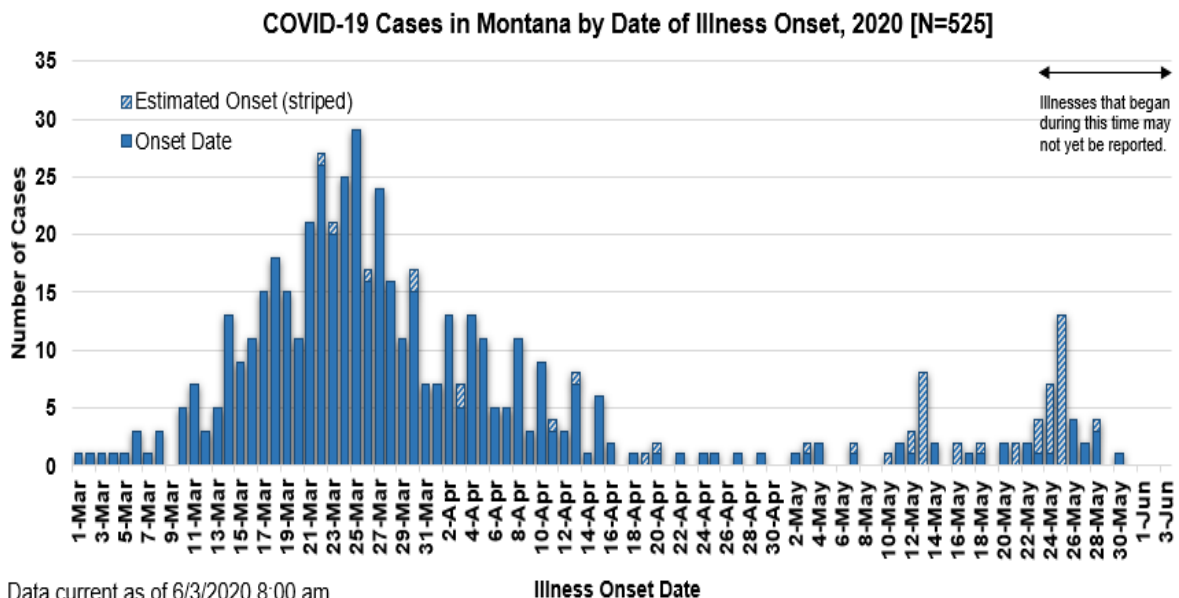
[Archive of COVID-19 Montana Analyses](#)



Demographic Information on Confirmed Cases

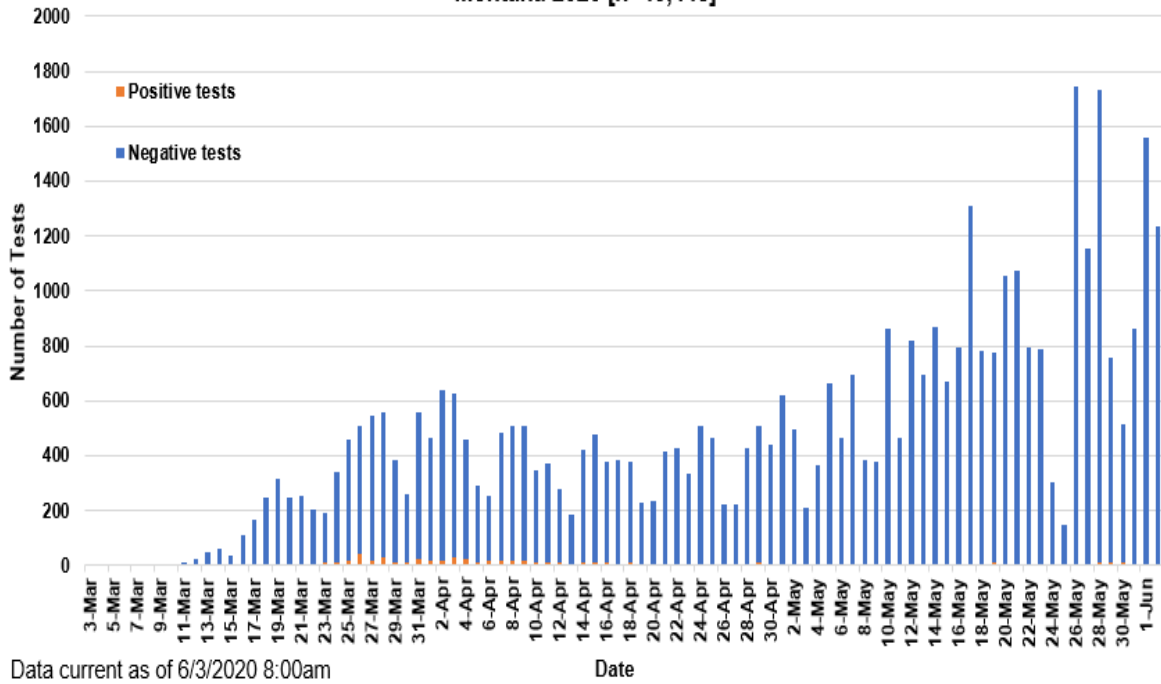
COVID-19 Cases in Montana	
Total Number of Cases	525
- Number of Deaths	17

** Tables and charts are updated by 10 am every morning.*



Data current as of 6/3/2020 8:00 am

**SARS-Cov-2 Testing at Montana Public Health Laboratory and Reference Laboratories,
Montana 2020 [n=43,448]**



Data current as of 6/3/2020 8:00am

Date

County of Residence	Number of Cases	Number of Deaths	Community Transmission*
Beaverhead	1		
Big Horn	31		
Broadwater	4		
Carbon	6		
Cascade	17	2	
Deer Lodge	3		
Flathead	37	2	Yes
Gallatin	155	1	Yes
Glacier	6		
Golden Valley	3		
Hill	1		
Jefferson	3		
Lake	5		
Lewis and Clark	16		Yes
Liberty	1		
Lincoln	7	1	
Madison	8	1	
Meagher	1		
Missoula	40	1	Yes
Musselshell	1		
Park	8		
Pondera	2		

County of Residence	Number of Cases	Number of Deaths	Community Transmission*
Ravalli	14		
Richland	3		
Roosevelt	7		
Rosebud	1		
Silver Bow	11		
Stillwater	1		
Toole	29	6	
Wheatland	1		
Yellowstone	102	3	Yes
Total	525	17	

* Community transmission - a community has identified cases who are unable to be linked with other known cases or travel. This status has been determined after consultation between state and local health departments.

Hospitalization Status	Number of Cases (percent of total)
Ever hospitalized	67 (13%)
Not hospitalized	457 (87%)
Under Investigation	1 (<1%)
Total	525

Age Group	Number of Cases (percent of total)
0-9 years	8 (1%)
10-19	29 (6%)
20-29 years	101 (19%)
30-39 years	88 (17%)
40-49 years	71 (14%)
50-59 years	91 (17%)
60-69 years	82 (16%)
70-79 years	37 (7%)
80+ years	18 (3%)
Total	525

Sex	Number of Cases (percent of total)
Female	270 (51%)

Sex	Number of Cases (percent of total)
Male	255 (49%)
Total	525

Race and Ethnicity	Number of Cases (percent of total)
White	446 (85%)
American Indian, Alaska Native, Native Hawaiian, and Pacific Islander	58 (11%)
Asian	1 (<1%)
Black or African American	2 (<1%)
Other Race	4 (<1%)
Undetermined/Under investigation	14 (3%)
Total	525
Among those with ethnicity specified:	
Hispanic/Latino	25 (5%)
Not Hispanic/Latino	470 (95%)
Total	495

Current Status of Cases	Number of Cases (percent of total)
Hospitalized	1 (<1%)
Deceased	17 (3%)
Recovering	43 (8%)
Recovered and released from isolation	464 (88%)
Total number of cases	525

These tables include out-of-state cases who were diagnosed in Montana, as well as Montana residents whether they were diagnosed in MT or another state.



MONTANA
COMMUNICABLE
DISEASE EPIDEMIOLOGY

Communicable Disease Epidemiology Staff Listing



To submit a question or comment to the Communicable Disease Epidemiology Program, please click on the suggestion box to access our online form.

 [Diseases A-Z](#)

 [Disease Reporting](#)

 [Data and Reports](#)

 [Contact Us](#)

Other Program Areas

 [Tuberculosis \(TB\)](#)

 [Healthcare Associated Infections \(HAI\)](#)

 [Sexually Transmitted Diseases \(HIV/STD\)](#)

 [Antimicrobial Resistance](#)

 [Follow DPHHS](#)

The DPHHS CDEpi Section mission is to create, maintain, support, and strengthen routine surveillance and detection systems and epidemiological investigation processes, as well as to expand these systems and processes in response to incidents of public health significance.

[Nondiscrimination Notice/Policy](#)

[Notice of Use of Protected Health Information](#)

[Disclaimer](#)

[Contact Webmaster](#)

[Language Assistance Available](#)

[Español](#) | [Deutsch](#) | [繁體中文](#) | [日本語](#) | [Tagalog](#) | [Français](#) | [Русский](#) | [한국어](#) | [العربية](#) | [ไทย](#) | [Norsk](#) | [Tiếng Việt](#) | [український](#) | [Pennsilfaanisch Deitsch](#) | [Italiano](#)