

Coronavirus Disease 2019 (COVID-19)

[Analysis of COVID-19 Cases in Montana as of 5/29/2020](#)

[Archive of COVID-19 Montana Analyses](#)



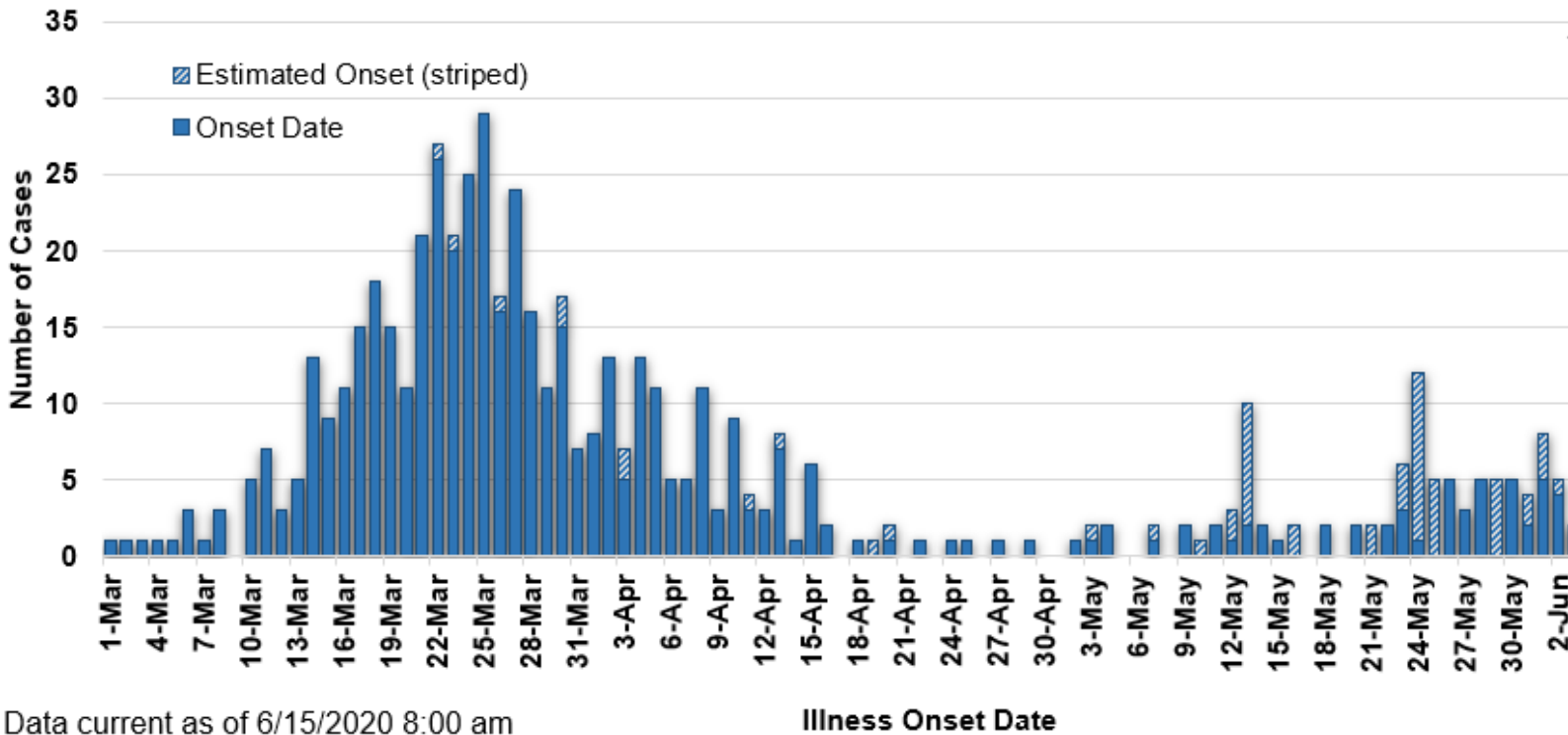
Demographic Information on Confirmed Cases

COVID-19 Cases in Montana	
Total Number of Cases	609
- Number of Deaths	19

*\* Tables and charts are updated by 10 am every morning.*

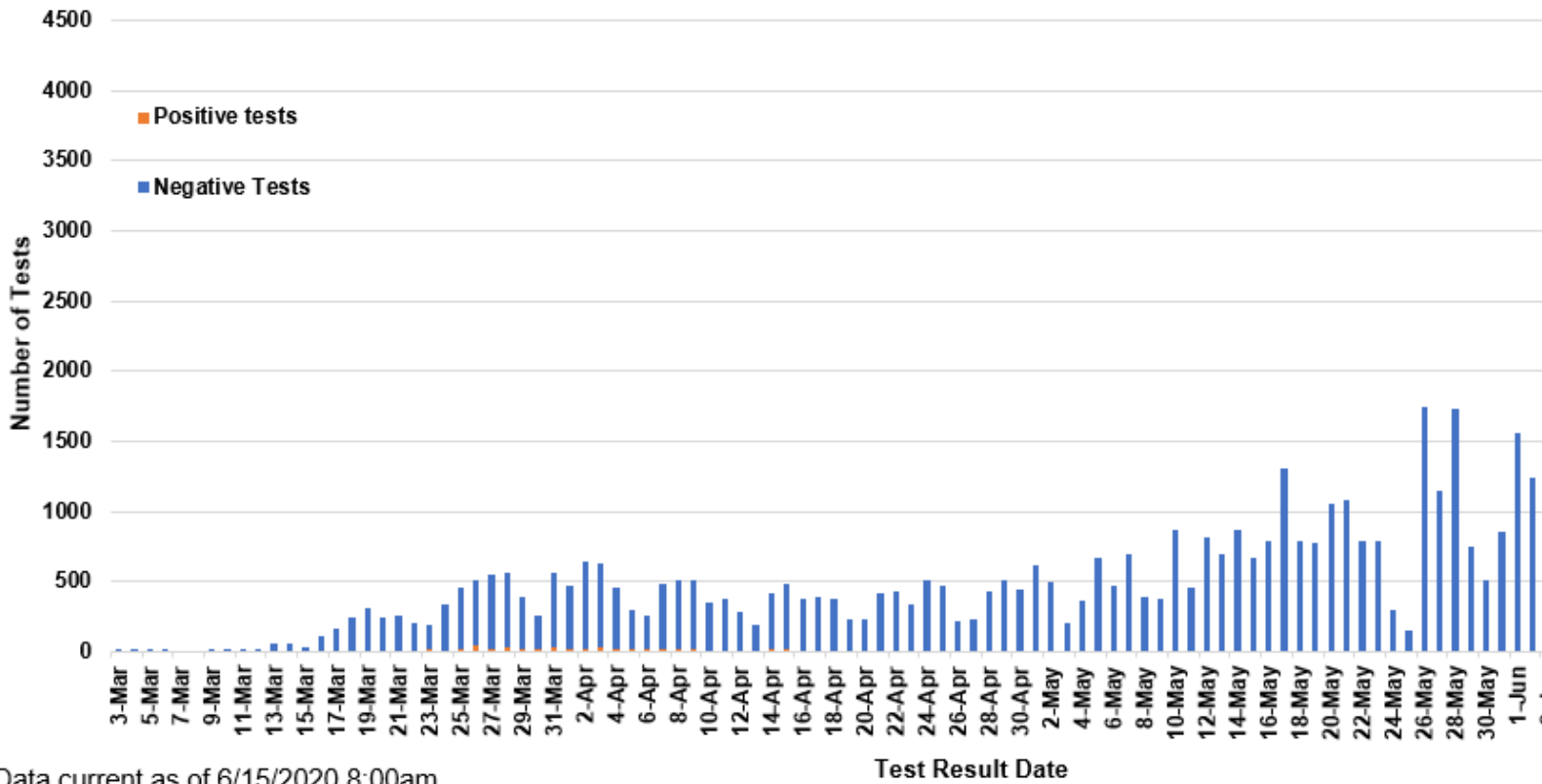


### COVID-19 Cases in Montana by Date of Illness Onset, 2020 [N=609]



Data current as of 6/15/2020 8:00 am

### SARS-Cov-2 Testing at Montana Public Health Laboratory and Reference Laboratories, Montana 2020 [n=60,937]



Data current as of 6/15/2020 8:00am

County of Residence	Number of Cases	Number of Deaths	Community Transmission*
Beaverhead	1		
Big Horn	47	2	
Broadwater	4		
Carbon	6		

County of Residence	Number of Cases	Number of Deaths	Community Transmission*
Cascade	19	2	
Custer	11		
Deer Lodge	3		
Flathead	39	2	Yes
Gallatin	188	1	Yes
Glacier	6		
Golden Valley	3		
Hill	1		
Jefferson	3		
Lake	9		
Lewis and Clark	20		Yes
Liberty	1		
Lincoln	7	1	
Madison	8	1	
Meagher	1		
Missoula	40	1	Yes
Musselshell	1		
Park	8		
Pondera	2		
Ravalli	18		
Richland	3		
Roosevelt	7		
Rosebud	1		
Silver Bow	11		
Stillwater	3		
Toole	29	6	
Wheatland	1		
Yellowstone	108	3	Yes
Total	609	19	

\* Community transmission - a community has identified cases who are unable to be linked with other known cases or travel. This status has been determined after consultation between state and local health departments.

Hospitalization Status	Number of Cases (percent of total)
Ever hospitalized	78 (13%)
Not hospitalized	522 (87%)
Under Investigation	9
Total	609

Age Group	Number of Cases (percent of total)
0-9 years	14 (2%)
10-19	41 (7%)
20-29 years	110 (18%)
30-39 years	105 (17%)
40-49 years	78 (13%)
50-59 years	101 (17%)
60-69 years	97 (15%)
70-79 years	42 (7%)
80+ years	21 (4%)
Total	609

Sex	Number of Cases (percent of total)
Female	308 (51%)
Male	301 (49%)
Total	609

Race and Ethnicity	Number of Cases (percent of total)
White	482 (80%)
American Indian, Alaska Native, Native Hawaiian, and Pacific Islander	80 (13%)
Asian	1 (<1%)

Race and Ethnicity	Number of Cases (percent of total)
Black or African American	2 (<1%)
Other Race	10 (<1%)
Undetermined/Under investigation	34 (6%)
Total	609
<b>Among those with ethnicity specified:</b>	
Hispanic/Latino	49 (7%)
Not Hispanic/Latino	506 (93%)
Total	555

Current Status of Cases	Number of Cases (percent of total)
Hospitalized	7 (1%)
Deceased	19 (3%)
Recovering	73 (12%)
Recovered and released from isolation	510 (84%)
Total number of cases	609

These tables include out-of-state cases who were diagnosed in Montana, as well as Montana residents whether they were diagnosed in MT or another state.