

Coronavirus Disease 2019 (COVID-19)

[Analysis of COVID-19 Cases in Montana as of 5/29/2020](#)

[Archive of COVID-19 Montana Analyses](#)



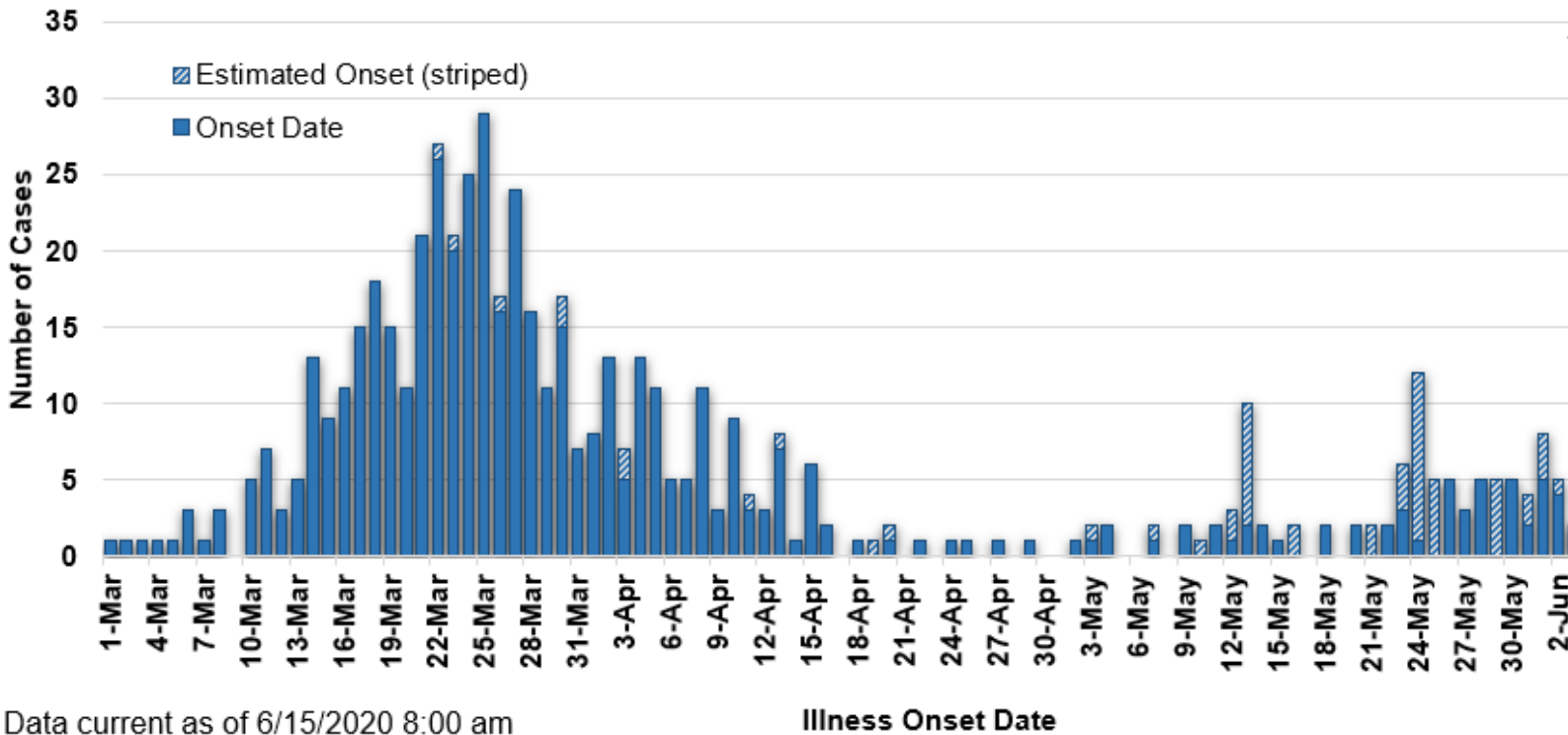
Demographic Information on Confirmed Cases

| | |
|---------------------------|-----|
| COVID-19 Cases in Montana | |
| Total Number of Cases | 609 |
| - Number of Deaths | 19 |

** Tables and charts are updated by 10 am every morning.*

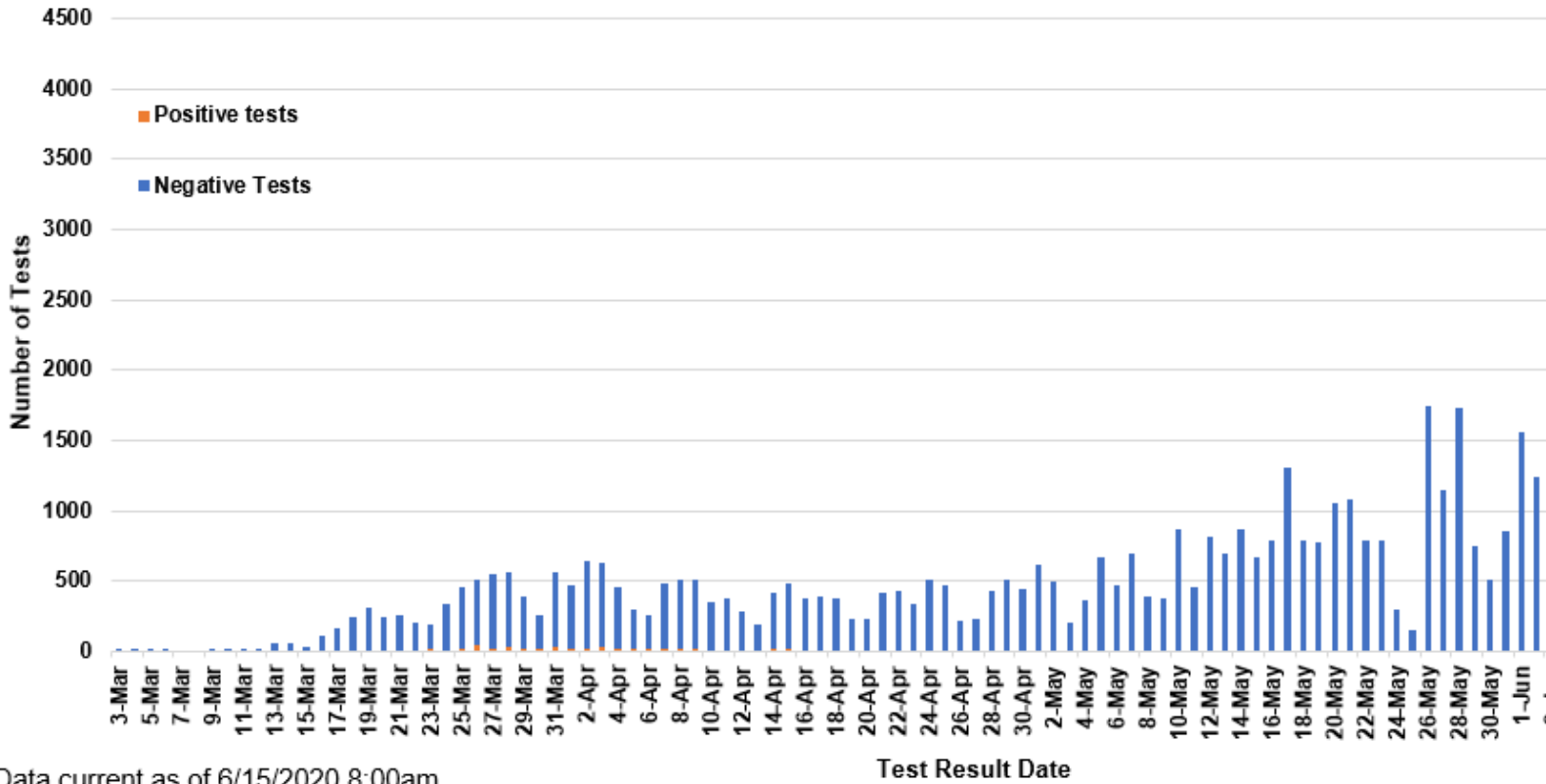


COVID-19 Cases in Montana by Date of Illness Onset, 2020 [N=609]



Data current as of 6/15/2020 8:00 am

SARS-Cov-2 Testing at Montana Public Health Laboratory and Reference Laboratories, Montana 2020 [n=60,937]



Data current as of 6/15/2020 8:00am

| County of Residence | Number of Cases | Number of Deaths | Community Transmission* |
|---------------------|-----------------|------------------|-------------------------|
| Beaverhead | 1 | | |
| Big Horn | 47 | 2 | |
| Broadwater | 4 | | |
| Carbon | 6 | | |

| County of Residence | Number of Cases | Number of Deaths | Community Transmission* |
|---------------------|-----------------|------------------|-------------------------|
| Cascade | 19 | 2 | |
| Custer | 11 | | |
| Deer Lodge | 3 | | |
| Flathead | 39 | 2 | Yes |
| Gallatin | 188 | 1 | Yes |
| Glacier | 6 | | |
| Golden Valley | 3 | | |
| Hill | 1 | | |
| Jefferson | 3 | | |
| Lake | 9 | | |
| Lewis and Clark | 20 | | Yes |
| Liberty | 1 | | |
| Lincoln | 7 | 1 | |
| Madison | 8 | 1 | |
| Meagher | 1 | | |
| Missoula | 40 | 1 | Yes |
| Musselshell | 1 | | |
| Park | 8 | | |
| Pondera | 2 | | |
| Ravalli | 18 | | |
| Richland | 3 | | |
| Roosevelt | 7 | | |
| Rosebud | 1 | | |
| Silver Bow | 11 | | |
| Stillwater | 3 | | |
| Toole | 29 | 6 | |
| Wheatland | 1 | | |
| Yellowstone | 108 | 3 | Yes |
| Total | 609 | 19 | |

* Community transmission - a community has identified cases who are unable to be linked with other known cases or travel. This status has been determined after consultation between state and local health departments.

| Hospitalization Status | Number of Cases (percent of total) |
|------------------------|------------------------------------|
| Ever hospitalized | 78 (13%) |
| Not hospitalized | 522 (87%) |
| Under Investigation | 9 |
| Total | 609 |

| Age Group | Number of Cases (percent of total) |
|-------------|------------------------------------|
| 0-9 years | 14 (2%) |
| 10-19 | 41 (7%) |
| 20-29 years | 110 (18%) |
| 30-39 years | 105 (17%) |
| 40-49 years | 78 (13%) |
| 50-59 years | 101 (17%) |
| 60-69 years | 97 (15%) |
| 70-79 years | 42 (7%) |
| 80+ years | 21 (4%) |
| Total | 609 |

| Sex | Number of Cases (percent of total) |
|--------|------------------------------------|
| Female | 308 (51%) |
| Male | 301 (49%) |
| Total | 609 |

| Race and Ethnicity | Number of Cases (percent of total) |
|---|------------------------------------|
| White | 482 (80%) |
| American Indian, Alaska Native, Native Hawaiian, and Pacific Islander | 80 (13%) |
| Asian | 1 (<1%) |

| Race and Ethnicity | Number of Cases (percent of total) |
|--|------------------------------------|
| Black or African American | 2 (<1%) |
| Other Race | 10 (<1%) |
| Undetermined/Under investigation | 34 (6%) |
| Total | 609 |
| Among those with ethnicity specified: | |
| Hispanic/Latino | 49 (7%) |
| Not Hispanic/Latino | 506 (93%) |
| Total | 555 |

| Current Status of Cases | Number of Cases (percent of total) |
|---------------------------------------|------------------------------------|
| Hospitalized | 7 (1%) |
| Deceased | 19 (3%) |
| Recovering | 73 (12%) |
| Recovered and released from isolation | 510 (84%) |
| Total number of cases | 609 |

These tables include out-of-state cases who were diagnosed in Montana, as well as Montana residents whether they were diagnosed in MT or another state.