

Sheila Hogan, Director

Children/Families

Disabilities

Seniors

Health

[Home](#) » [Public Health & Safety](#) » [Communicable Disease Epidemiology](#) » [Diseases A to Z](#) » [Coronavirus](#) » [Demographics](#)

Coronavirus Disease 2019 (COVID-19)

[Analysis of COVID-19 Cases in Montana as of 5/29/2020](#)

[Archive of COVID-19 Montana Analyses](#)

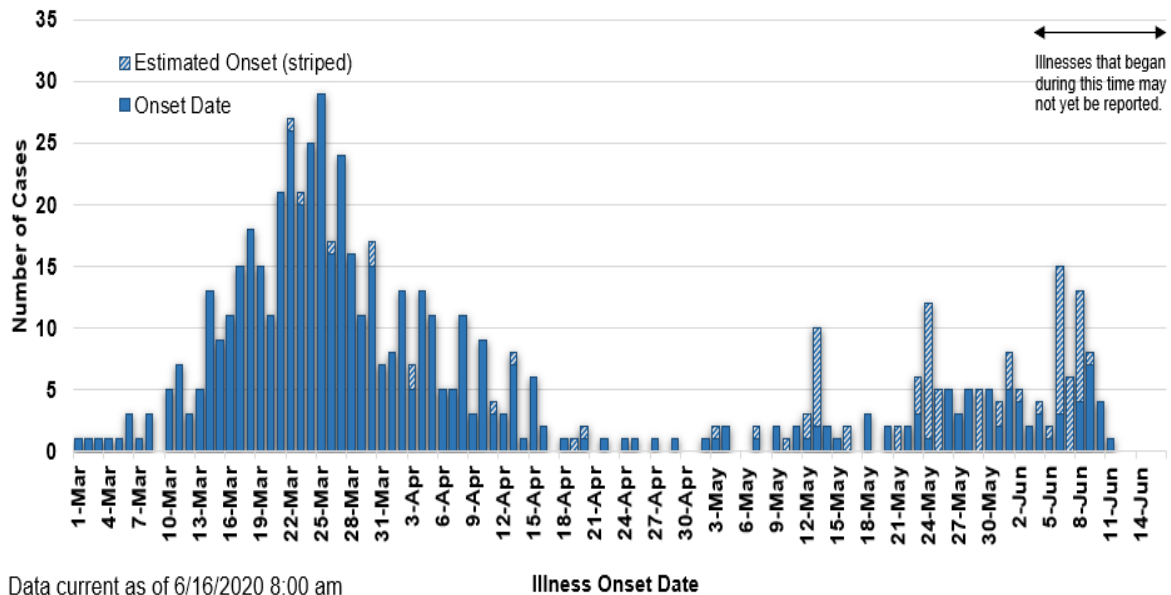


Demographic Information on Confirmed Cases

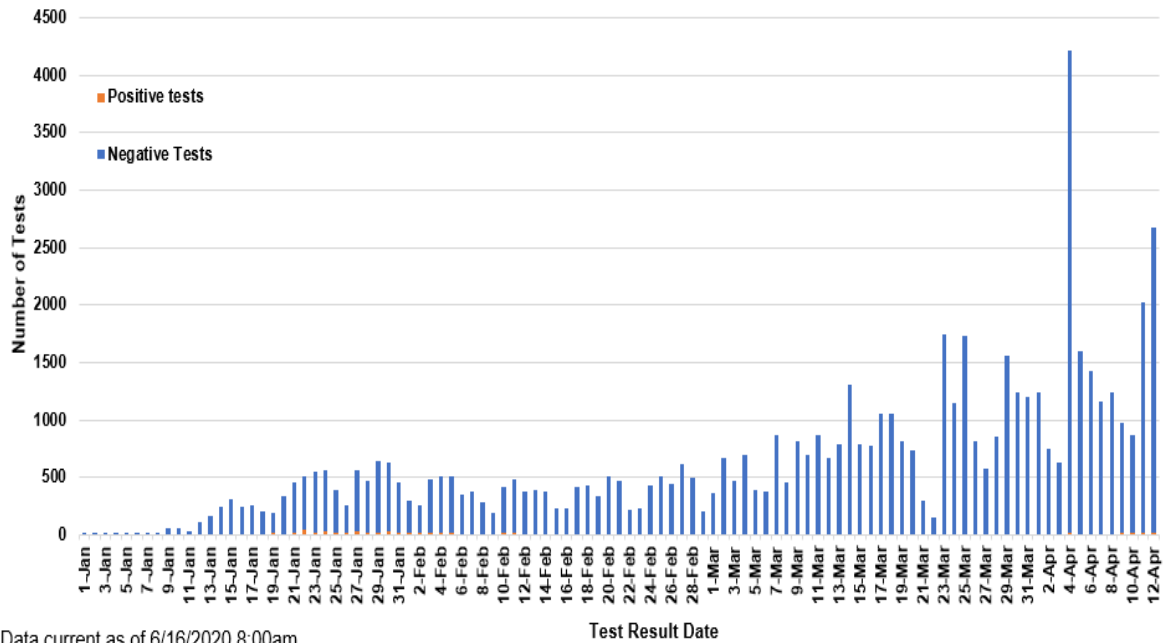
COVID-19 Cases in Montana	
Total Number of Cases	614
- Number of Deaths	19

** Tables and charts are updated by 10 am every morning.*

COVID-19 Cases in Montana by Date of Illness Onset, 2020 [N=614]



SARS-Cov-2 Testing at Montana Public Health Laboratory and Reference Laboratories, Montana 2020 [n=63,577]



County of Residence	Number of Cases	Number of Deaths	Community Transmission*
Beaverhead	1		
Big Horn	47	2	Yes
Broadwater	4		
Carbon	6		
Cascade	19	2	Yes
Custer	13		
Deer Lodge	3		
Flathead	39	2	Yes
Gallatin	188	1	Yes

County of Residence	Number of Cases	Number of Deaths	Community Transmission*
Glacier	6		
Golden Valley	3		
Hill	1		
Jefferson	3		
Lake	9		
Lewis and Clark	20		Yes
Liberty	1		
Lincoln	7	1	
Madison	8	1	
Meagher	1		
Missoula	42	1	Yes
Musselshell	1		
Park	8		
Pondera	2		
Ravalli	18		
Richland	3		
Roosevelt	7		
Rosebud	1		
Silver Bow	11		
Stillwater	3		
Toole	29	6	
Wheatland	1		
Yellowstone	109	3	Yes
Total	614	19	

* Community transmission - a community has identified cases who are unable to be linked with other known cases or travel. This status has been determined after consultation between state and local health departments.

Hospitalization Status	Number of Cases (percent of total)
Ever hospitalized	79 (13%)
Not hospitalized	532 (87%)
Under Investigation	3 (<1%)
Total	614

Age Group	Number of Cases (percent of total)
0-9 years	14 (2%)
10-19	41 (7%)

Age Group	Number of Cases (percent of total)
20-29 years	111 (18%)
30-39 years	105 (17%)
40-49 years	80 (13%)
50-59 years	101 (17%)
60-69 years	98 (15%)
70-79 years	43 (7%)
80+ years	21 (4%)
Total	614

Sex	Number of Cases (percent of total)
Female	309 (50%)
Male	305 (50%)
Total	614

Race and Ethnicity	Number of Cases (percent of total)
White	495 (80%)
American Indian, Alaska Native, Native Hawaiian, and Pacific Islander	81 (13%)
Asian	1 (<1%)
Black or African American	2 (<1%)
Other Race	10 (<1%)
Undetermined/Under investigation	25 (4%)
Total	614
Among those with ethnicity specified:	
Hispanic/Latino	49 (9%)
Not Hispanic/Latino	522 (91%)
Total	571

Current Status of Cases	Number of Cases (percent of total)
Hospitalized	7 (1%)

Current Status of Cases	Number of Cases (percent of total)
Deceased	19 (3%)
Recovering	53 (9%)
Recovered and released from isolation	535 (87%)
Total number of cases	614

These tables include out-of-state cases who were diagnosed in Montana, as well as Montana residents whether they were diagnosed in MT or another state.



Communicable Disease Epidemiology Staff Listing



To submit a question or comment to the Communicable Disease Epidemiology Program, please click on the suggestion box to access our online form.

 [Diseases A-Z](#)

 [Disease Reporting](#)

 [Data and Reports](#)

 [Contact Us](#)

Other Program Areas

 [Tuberculosis \(TB\)](#)

 [Healthcare Associated Infections \(HAI\)](#)

 [Sexually Transmitted Diseases \(HIV/STD\)](#)

 [Antimicrobial Resistance](#)

 [Follow DPHHS](#)

The DPHHS CDEpi Section mission is to create, maintain, support, and strengthen routine surveillance and detection systems and epidemiological investigation processes, as well as to expand these systems and processes in response to incidents of public health significance.

[Nondiscrimination Notice/Policy](#)

[Notice of Use of Protected Health Information](#)

[Disclaimer](#)

[Contact Webmaster](#)

Language Assistance Available

Español | Deutsch | 繁體中文 | 日本語 | Tagalog | Français | Русский | 한국어 | العربية | ไทย | Norsk |
Tiếng Việt | український | Pennsilfaanisch Deitsch | Italiano