

Coronavirus Disease 2019 (COVID-19)

[Analysis of COVID-19 Cases in Montana as of 06/12/2020](#)

[Archive of COVID-19 Montana Analyses](#)



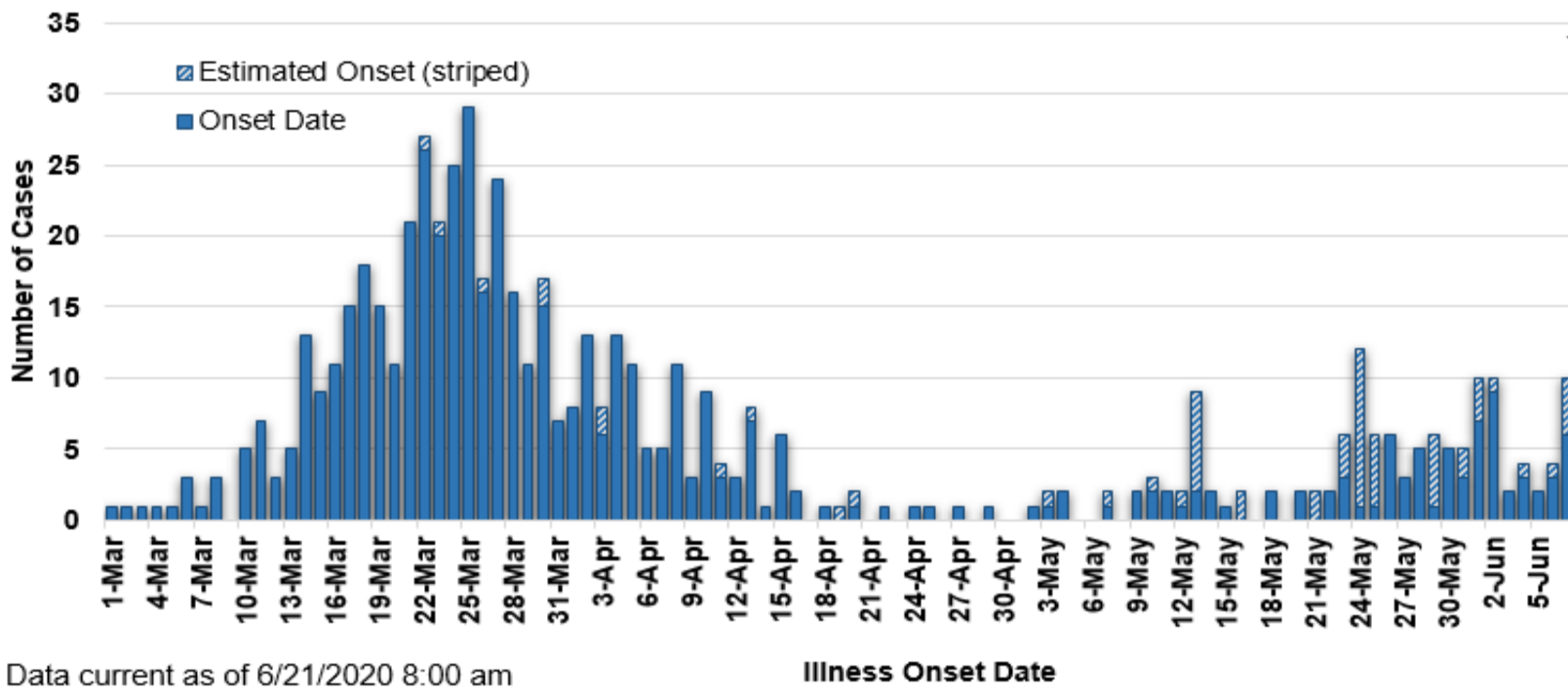
Demographic Information on Confirmed Cases

COVID-19 Cases in Montana	
Total Number of Cases	717
- Number of Deaths	20

*\* Tables and charts are updated by 10 am every morning.*

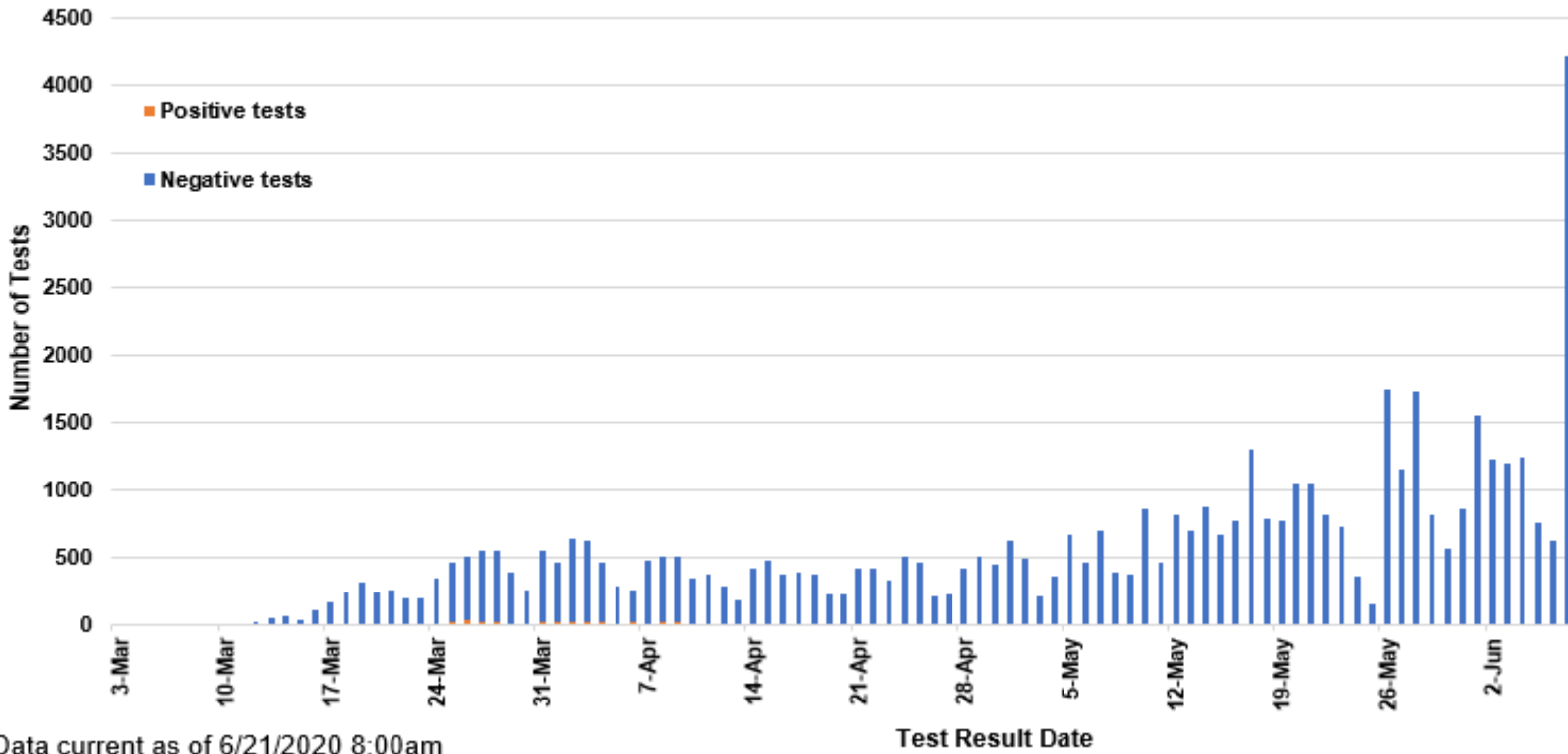


## COVID-19 Cases in Montana by Date of Illness Onset, 2020 [N=717]



Data current as of 6/21/2020 8:00 am

## SARS-Cov-2 Testing at Montana Public Health Laboratory and Reference Laboratories, Montana 2020 [n=70,357]



Data current as of 6/21/2020 8:00am

County of Residence	Number of Cases	Number of Deaths	Community Transmission*
Beaverhead	1		
Big Horn	59	3	Yes
Broadwater	5		
Carbon	13		
Cascade	22	2	Yes
Custer	22		
Dawson	1		

County of Residence	Number of Cases	Number of Deaths	Community Transmission*
Deer Lodge	3		
Fergus	2		
Flathead	46	2	Yes
Gallatin	209	1	Yes
Glacier	7		
Golden Valley	3		
Hill	1		
Jefferson	3		
Lake	11		
Lewis and Clark	22		Yes
Liberty	1		
Lincoln	7	1	
Madison	8	1	
Meagher	1		
Missoula	49	1	Yes
Musselshell	1		
Park	9		
Pondera	2		
Ravalli	17		
Richland	8		
Roosevelt	7		
Rosebud	7		
Silver Bow	11		
Stillwater	3		
Toole	31	6	
Valley	1		
Wheatland	1		
Yellowstone	123	3	Yes
Total	717	20	

\* Community transmission - a community has identified cases who are unable to be linked with other known cases or travel. This status has been determined after consultation between state and local health departments.

Hospitalization Status	Number of Cases (percent of total)
Ever hospitalized	89 (12%)
Not hospitalized	623 (87%)
Under Investigation	5 (<1%)
Total	717

Age Group	Number of Cases (percent of total)
0-9 years	22 (3%)
10-19	54 (7%)
20-29 years	128 (18%)
30-39 years	124 (17%)
40-49 years	91 (13%)
50-59 years	110 (15%)
60-69 years	112 (15%)
70-79 years	55 (8%)
80+ years	21 (3%)
Total	698
Sex	Number of Cases (percent of total)
Female	362 (50%)
Male	355 (50%)
Total	717

Race and Ethnicity	Number of Cases (percent of total)
White	554 (77%)
American Indian, Alaska Native, Native Hawaiian, and Pacific Islander	91 (13%)
Asian	1 (<1%)

Race and Ethnicity	Number of Cases (percent of total)
Black or African American	3 (<1%)
Other Race	11 (1%)
Undetermined/Under investigation	57 (8%)
Total	717
<b>Among those with ethnicity specified:</b>	
Hispanic/Latino	55 (8%)
Not Hispanic/Latino	596 (92%)
Total	651

Current Status of Cases	Number of Cases (percent of total)
Hospitalized	15 (2%)
Deceased	20 (3%)
Recovering	134 (19%)
Recovered and released from isolation	548 (76%)
Total number of cases	717

These tables include out-of-state cases who were diagnosed in Montana, as well as Montana residents whether they were diagnosed in MT or another state.