

Sheila Hogan, Director

Children/Families

Disabilities

Seniors

Health

[Home](#) » [Public Health & Safety](#) » [Communicable Disease Epidemiology](#) » [Diseases A to Z](#) » [Coronavirus](#) » [Demographics](#)

## Coronavirus Disease 2019 (COVID-19)

### [Analysis of COVID-19 Cases in Montana as of 06/12/2020](#)

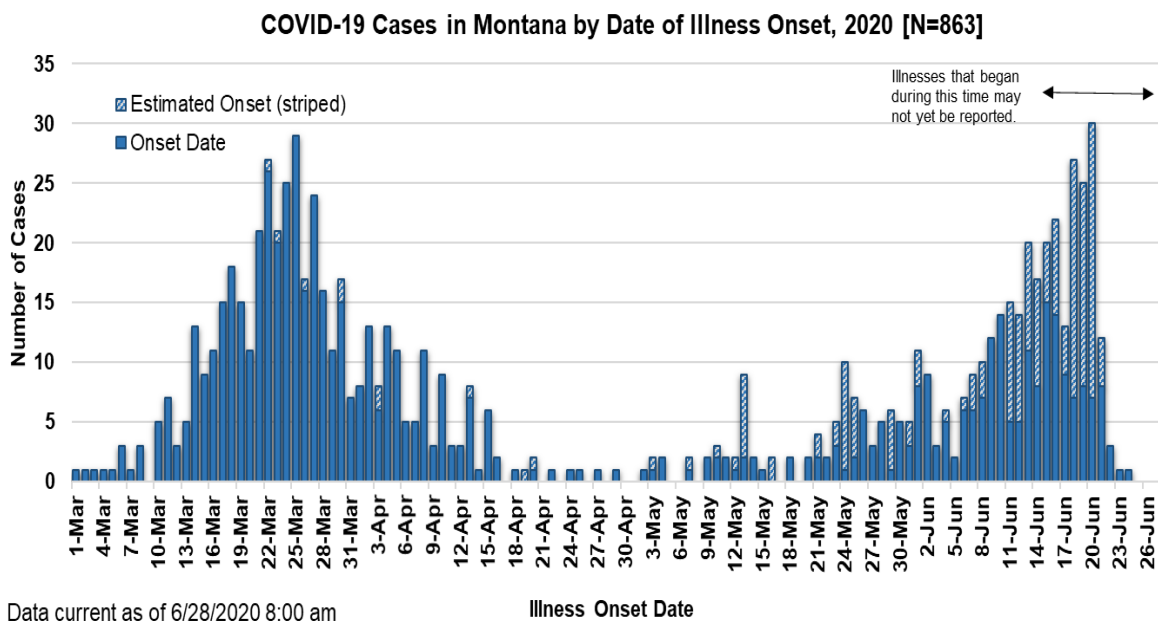
[Archive of COVID-19 Montana Analyses](#)



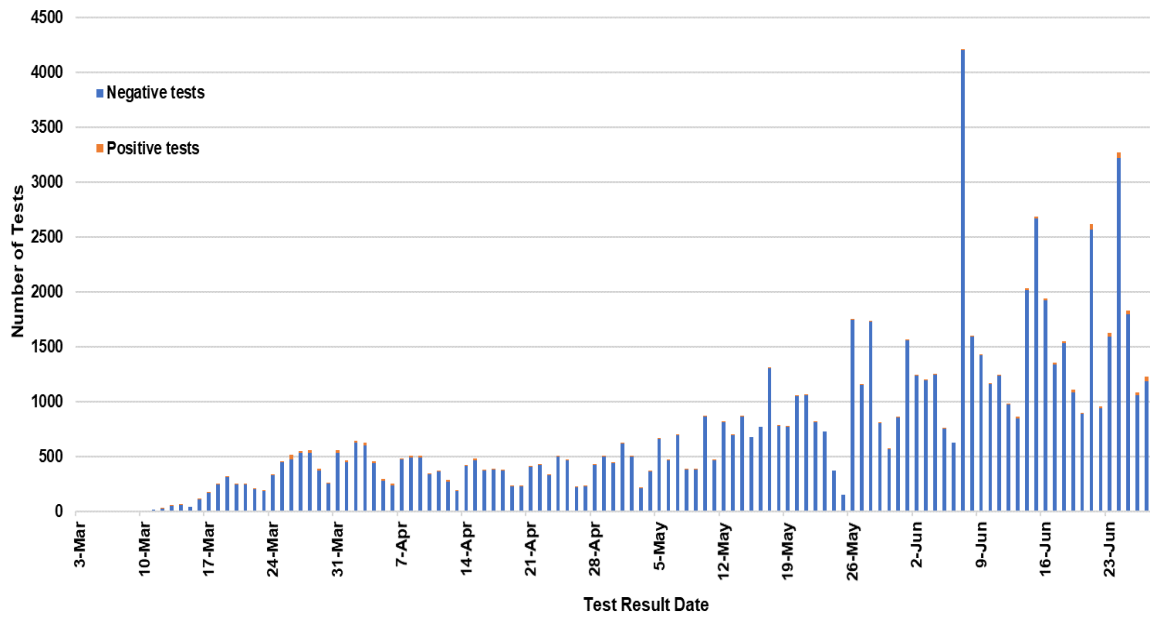
### Demographic Information on Confirmed Cases

COVID-19 Cases in Montana	
Total Number of Cases	863
- Number of Deaths	22

*\* Tables and charts are updated by 10 am every morning.*



**SARS-Cov-2 Testing at Montana Public Health Laboratory and Reference Laboratories, Montana 2020**  
[n=82,474]



County of Residence	Number of Cases	Number of Deaths	Community Transmission*
Beaverhead	1		
Big Horn	72	3	Yes
Broadwater	5		
Carbon	18		
Cascade	27	2	Yes
Custer	25		
Dawson	8		
Deer Lodge	3		
Fergus	2		
Flathead	53	2	Yes
Gallatin	240	1	Yes
Glacier	9		
Golden Valley	2		
Hill	1		
Jefferson	4		
Lake	16		
Lewis and Clark	25		Yes
Liberty	1		
Lincoln	7	1	
Madison	8	1	
Meagher	1		
Missoula	66	1	Yes
Musselshell	1		

County of Residence	Number of Cases	Number of Deaths	Community Transmission*
Park	9		
Pondera	2		
Ravalli	23		Yes
Richland	10		
Roosevelt	8		
Rosebud	9	1	
Silver Bow	14		
Stillwater	4		
Toole	31	6	
Treasure	2		
Valley	1		
Wheatland	1		
Yellowstone	151	4	Yes
Total	863	22	

\* Community transmission - a community has identified cases who are unable to be linked with other known cases or travel. This status has been determined after consultation between state and local health departments.

Hospitalization Status	Number of Cases (percent of total)
Ever hospitalized	97 (12%)
Not hospitalized	745 (86%)
Under Investigation	21 (2%)
Total	863

Age Group	Number of Cases (percent of total)
0-9 years	32 (4%)
10-19	67 (7%)
20-29 years	165 (19%)
30-39 years	153 (18%)
40-49 years	108 (13%)
50-59 years	128 (15%)
60-69 years	129 (15%)
70-79 years	59 (7%)

Age Group	Number of Cases (percent of total)
80+ years	22 (2%)
Total	863

Sex	Number of Cases (percent of total)
Female	433 (50%)
Male	430 (50%)
Total	863

Race and Ethnicity	Number of Cases (percent of total)
White	638 (74%)
American Indian, Alaska Native, Native Hawaiian, and Pacific Islander	112 (13%)
Asian	2 (<1%)
Black or African American	4 (<1%)
Other Race	14 (1%)
Undetermined/Under investigation	93 (11%)
Total	863
<b>Among those with ethnicity specified:</b>	
Hispanic/Latino	62 (8%)
Not Hispanic/Latino	698 (92%)
Total	760

Current Status of Cases	Number of Cases (percent of total)
Hospitalized	11 (1%)
Deceased	22 (3%)
Recovering	226 (26%)
Recovered and released from isolation	604 (70%)
Total number of cases	863

These tables include out-of-state cases who were diagnosed in Montana, as well as Montana residents whether they were diagnosed in MT or another state.

## Communicable Disease Epidemiology Staff Listing



To submit a question or comment to the Communicable Disease Epidemiology Program, please click on the suggestion box to access our online form.

 [Diseases A-Z](#)

 [Disease Reporting](#)

 [Data and Reports](#)

 [Contact Us](#)

Other Program Areas

 [Tuberculosis \(TB\)](#)

 [Healthcare Associated Infections \(HAI\)](#)

 [Sexually Transmitted Diseases \(HIV/STD\)](#)

 [Antimicrobial Resistance](#)

 [Follow DPHHS](#)

*The DPHHS CDEpi Section mission is to create, maintain, support, and strengthen routine surveillance and detection systems and epidemiological investigation processes, as well as to expand these systems and processes in response to incidents of public health significance.*

[Nondiscrimination Notice/Policy](#)

[Notice of Use of Protected Health Information](#)

[Disclaimer](#)

[Contact Webmaster](#)

[Language Assistance Available](#)

[Español](#) | [Deutsch](#) | [繁體中文](#) | [日本語](#) | [Tagalog](#) | [Français](#) | [Русский](#) | [한국어](#) | [العربية](#) | [ไทย](#) | [Norsk](#) | [Tiếng Việt](#) | [український](#) | [Pennsilfaanisch Deitsch](#) | [Italiano](#)