

### Coronavirus Disease 2019 (COVID-19)

### [Analysis of COVID-19 Cases in Montana as of 06/26/2020](#)

[Archive of COVID-19 Montana Analyses](#)



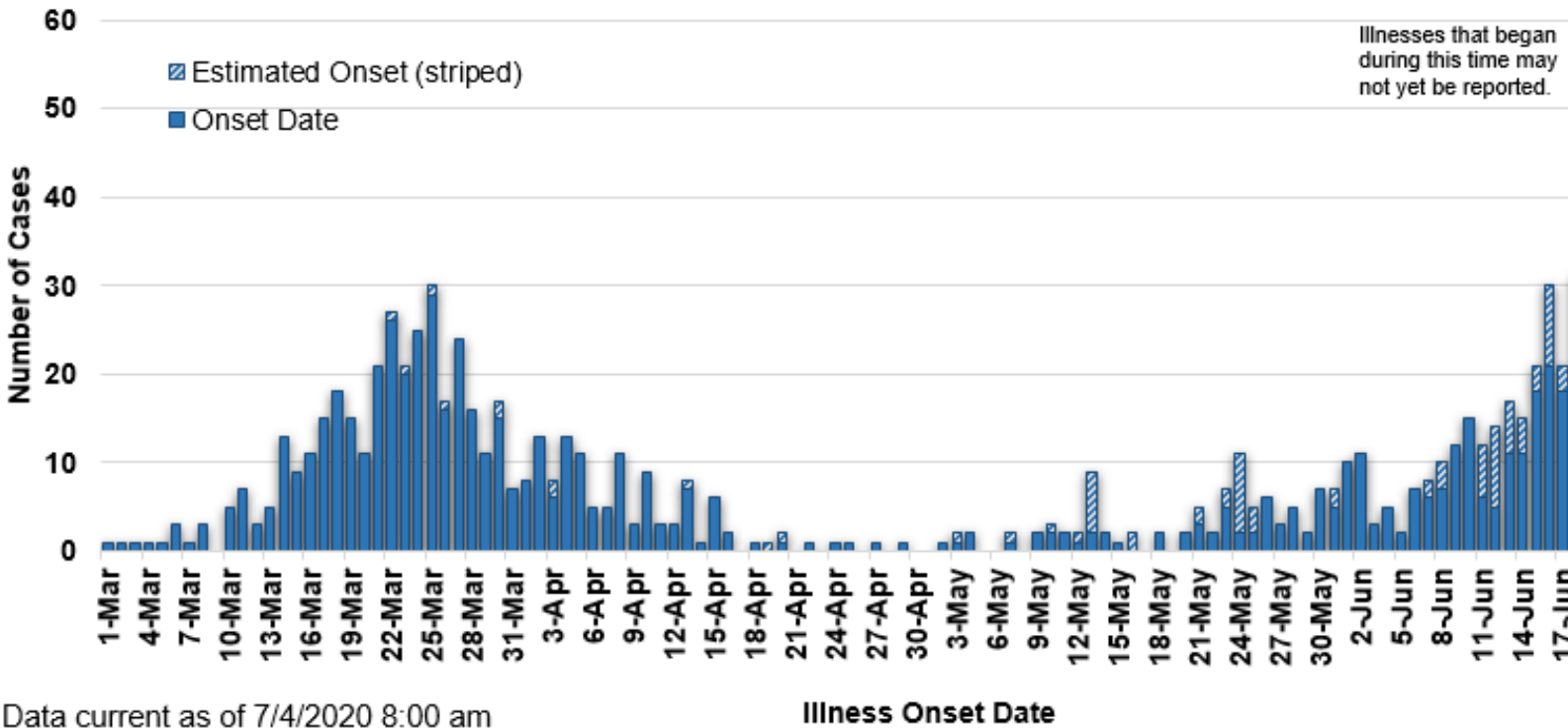
#### Demographic Information on Confirmed Cases

COVID-19 Cases in Montana	
Total Number of Cases	1212
- Number of Deaths	23

*\* Tables and charts are updated by 10 am every morning.*

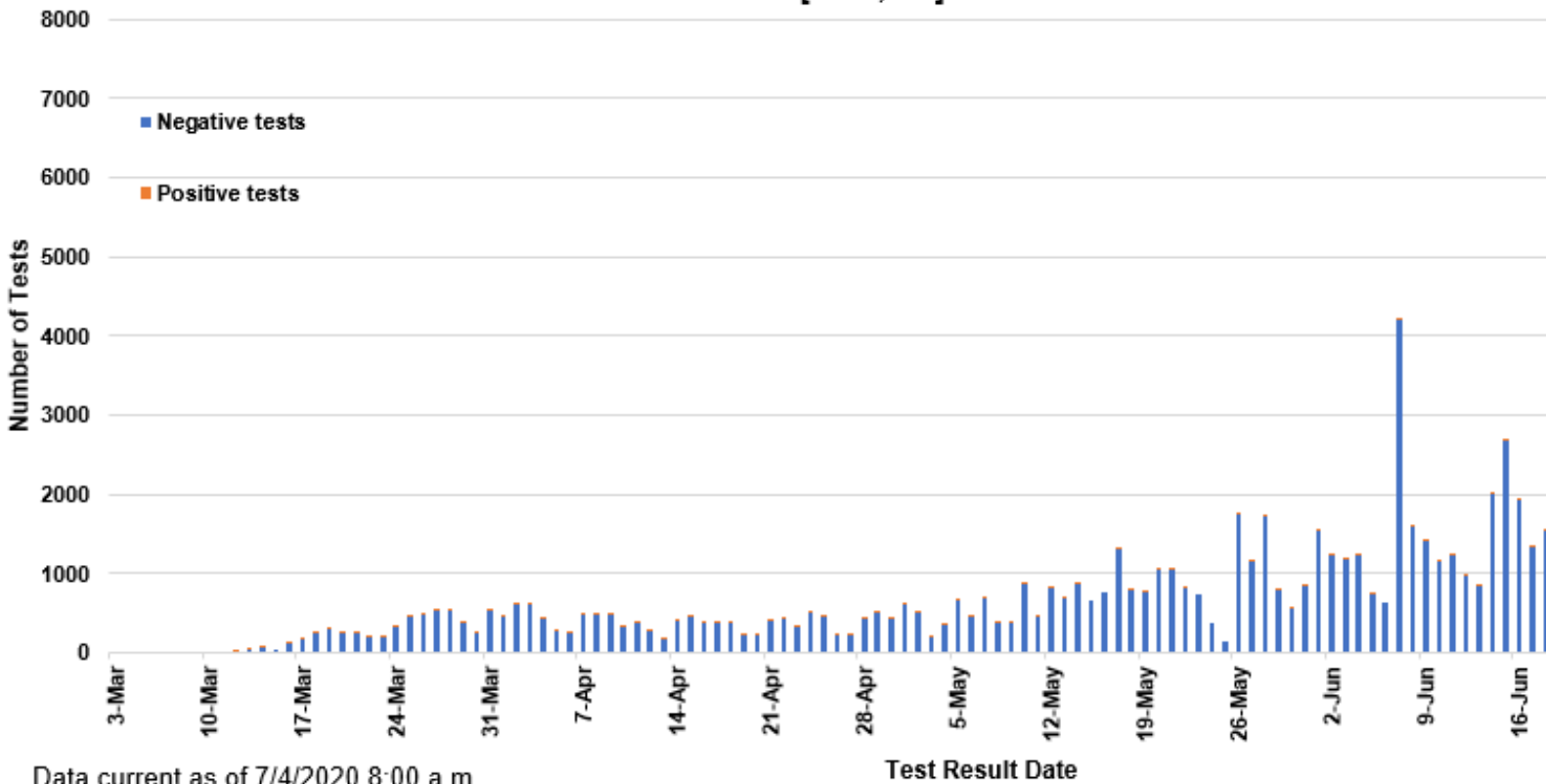


## COVID-19 Cases in Montana by Date of Illness Onset, 2020 [N=1,167]



Data current as of 7/4/2020 8:00 am

## SARS-Cov-2 Testing at Montana Public Health Laboratory and Reference Laboratories, Montana 2020 [n=98,950]



Data current as of 7/4/2020 8:00 a.m.

County of Residence	Number of Cases	Number of Deaths	Community Transmission*
Beaverhead	2		
Big Horn	89	4	Yes
Broadwater	5		
Carbon	27		

County of Residence	Number of Cases	Number of Deaths	Community Transmission*
Cascade	34	2	Yes
Custer	30		
Dawson	8		
Deer Lodge	4		
Fergus	2		
Flathead	64	2	Yes
Gallatin	298	1	Yes
Glacier	25		
Golden Valley	3		
Granite	4		
Hill	2		
Jefferson	3		
Lake	21		
Lewis and Clark	32		Yes
Liberty	1		
Lincoln	9	1	
Madison	17	1	
Meagher	2		
Missoula	107	1	Yes
Musselshell	1		
Park	13		
Pondera	2		
Ravalli	33		Yes
Richland	22		
Roosevelt	7		
Rosebud	10	1	
Sheridan	1		
Silver Bow	19		
Stillwater	6		
Teton	10		
Toole	31	6	
Treasure	2		
Valley	4		
Wheatland	1		
Yellowstone	261	4	Yes
Total	1212	23	

\* Community transmission - a community has identified cases who are unable to be linked with other known cases or travel. This status has been determined after consultation between state and local health departments.

Hospitalization Status	Number of Cases (percent of total)
Ever hospitalized	112 (9%)
Not hospitalized	1054 (87%)
Under Investigation	46 (4%)
Total	1212

Age Group	Number of Cases (percent of total)
0-9 years	46 (4%)
10-19	102 (8%)
20-29 years	266 (22%)
30-39 years	214 (18%)
40-49 years	156 (13%)
50-59 years	164 (13%)
60-69 years	157 (13%)
70-79 years	73 (6%)
80+ years	34 (3%)
Total	1212
Sex	Number of Cases (percent of total)
Female	592 (49%)
Male	620 (51%)

Sex	Number of Cases (percent of total)
Total	1212

Race and Ethnicity	Number of Cases (percent of total)
White	775 (64%)
American Indian, Alaska Native, Native Hawaiian, and Pacific Islander	136 (11%)
Asian	2 (<1%)
Black or African American	6 (<1%)
Other Race	18 (1%)
Undetermined/Under investigation	275 (23%)
Total	1212
<b>Among those with ethnicity specified:</b>	
Hispanic/Latino	77 (8%)
Not Hispanic/Latino	850 (92%)
Total	927

Current Status of Cases	Number of Cases (percent of total)
Hospitalized	20 (2%)
Deceased	23 (2%)
Recovering	491 (40%)
Recovered and released from isolation	678 (56%)
Total number of cases	1212

**Location (at time of testing) of individuals diagnosed but not residing or counted in Montana:**

County	Number of Cases (percent of total)
Carbon	1 (1%)
Cascade	6 (8%)
Custer	3 (4%)
Dawson	1 (1%)
Deer Lodge	1 (1%)
Fergus	2 (3%)
Flathead	9 (12%)
Gallatin	20 (26%)
Glacier	1 (1%)
Lake	5 (6%)
Lewis and Clark	3 (4%)
Lincoln	3 (4%)
Missoula	3 (4%)
Park	4 (5%)
Ravalli	7 (9%)
Silver Bow	3 (4%)
Toole	1 (1%)
Yellowstone	5 (6%)
Total	78

*Cases reported in the tables above include 13 residents of other states who were tested, isolated and/or hospitalized in Montana during the early phases of the pandemic. As COVID-19 is now widespread across the United States, data no longer include out-of-state residents who test positive in Montana in order to align with Council of State and Territorial Epidemiologists guidelines that classify cases by the individual's usual state of residence. This is standard practice for all communicable diseases to ensure accurate case reporting for Montana and the US. Additional individuals were diagnosed in Montana but are not included due to residency and/or the transient nature of their visit to the state: data for these individuals are reflected in the table immediately above.*