

Coronavirus Disease 2019 (COVID-19)

[Analysis of COVID-19 Cases in Montana as of 07/10/2020](#)

[Archive of COVID-19 Montana Analyses](#)



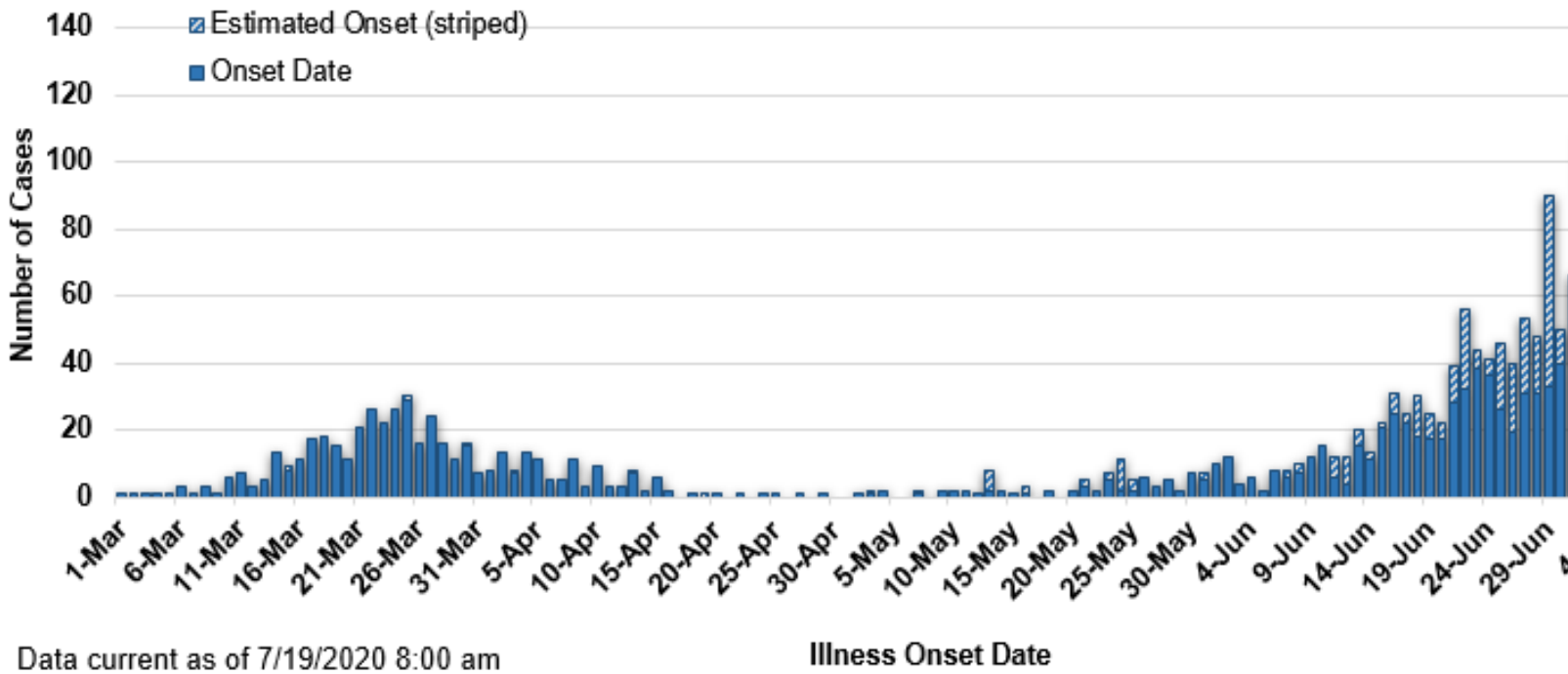
Demographic Information on Confirmed Cases

COVID-19 Cases in Montana	
Total Number of Cases	2471
- Number of Deaths	37

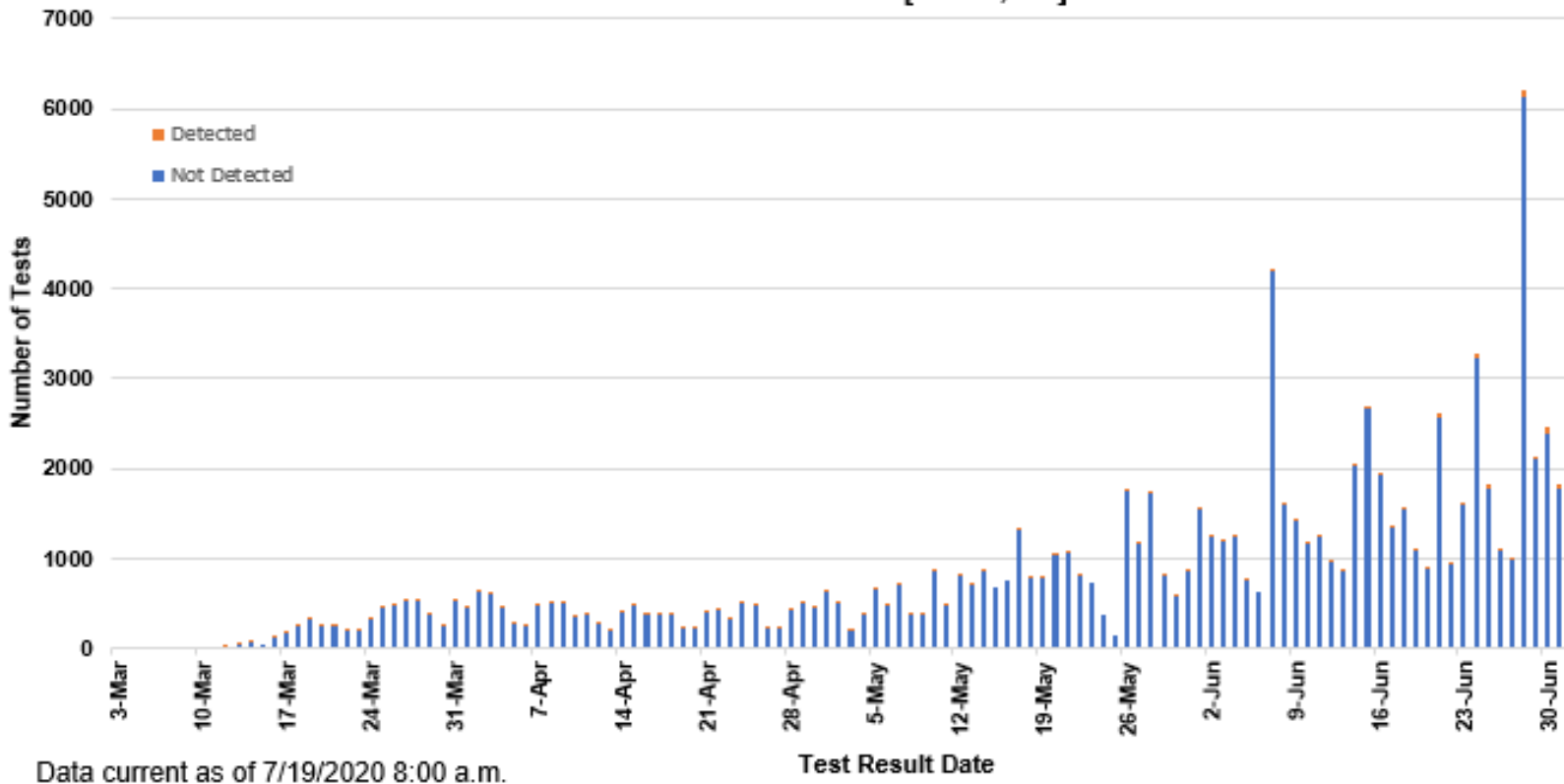
** Tables and charts are updated by 10 am every morning.*



COVID-19 Cases in Montana by Date of Illness Onset, 2020 [N=2,533]



SARS-Cov-2 PCR Testing at Montana Public Health Laboratory and Reference Laboratories, Montana 2020 [n=133,159]



County of Residence	Number of Cases	Number of Deaths	Community Transmission*
Beaverhead	9		
Big Horn	138	5	Yes
Blaine	4		
Broadwater	9		
Carbon	41		

County of Residence	Number of Cases	Number of Deaths	Community Transmission*
Cascade	69	2	Yes
Custer	41		
Dawson	8		
Deer Lodge	8		
Fallon	1		
Fergus	4		
Flathead	112	2	Yes
Gallatin	563	1	Yes
Garfield	10		
Glacier	34		
Golden Valley	3		
Granite	6		
Hill	34		
Jefferson	14		
Lake	100		
Lewis and Clark	77	1	Yes
Liberty	1		
Lincoln	44	1	
Madison	44	1	
Meagher	4		
Missoula	160	1	Yes
Musselshell	1		
Park	30		
Pondera	5		
Ravalli	50	1	Yes
Richland	34		
Roosevelt	9		
Rosebud	16	1	Yes
Sanders	4		
Sheridan	2		
Silver Bow	30		
Stillwater	13		
Sweet Grass	2		
Teton	15		
Toole	31	6	
Treasure	2		
Valley	4		
Wheatland	2		
Wibaux	1		
Yellowstone	682	15	Yes
Total	2471	37	

* Community transmission - a community has identified cases who are unable to be linked with other known cases or travel. This status has been determined after consultation between state and local health departments.

Hospitalization Status	Number of Cases (percent of total)
Ever hospitalized	164 (7%)
Not Hospitalized	2293 (93%)
Under Investigation	14 (<1%)
Total	2471

Age Group	Number of Cases (percent of total)
0-9 years	99 (4%)
10-19	193 (8%)
20-29 years	660 (27%)
30-39 years	425 (17%)
40-49 years	300 (12%)
50-59 years	290 (12%)
60-69 years	273 (11%)
70-79 years	134 (5%)
80+ years	97 (4%)

Age Group	Number of Cases (percent of total)
Total	2471
Sex	Number of Cases (percent of total)
Female	1250 (51%)
Male	1221 (49%)
Total	2471

Race and Ethnicity	Number of Cases (percent of total)
White	1457 (59%)
American Indian, Alaska Native, Native Hawaiian, and Pacific Islander	270 (11%)
Asian	5 (<1%)
Black or African American	13 (<1%)
Other Race	31 (1%)
Undetermined/Under investigation	695 (28%)
Total	2471
Among those with ethnicity specified:	
Hispanic/Latino	121 (7%)
Not Hispanic/Latino	1623 (93%)
Total	1744

Current Status of Cases	Number of Cases (percent of total)
Hospitalized	46 (2%)
Deceased	37 (1.5%)
Recovering	1313 (53%)
Recovered and released from isolation	1075 (44%)
Total number of cases	2471

Location (at time of testing) of individuals diagnosed but not residing or counted in Montana:

County	Number of Cases (percent of total)
Beaverhead	3 (2%)
Carbon	3 (2%)
Cascade	17 (12%)
Custer	3 (2%)
Dawson	1 (1%)
Deer Lodge	1 (1%)
Fergus	2 (1%)
Flathead	24 (17%)
Gallatin	36 (25%)
Glacier	1 (1%)
Lake	6 (4%)
Lewis and Clark	4 (3%)
Lincoln	3 (2%)
Madison	11 (8%)
Missoula	4 (3%)
Park	6 (4%)
Powell	1 (1%)
Ravalli	7 (5%)
Silver Bow	3 (2%)
Toole	1 (1%)
Yellowstone	8 (6%)
Total	145

Cases reported in the tables above include 13 residents of other states who were tested, isolated and/or hospitalized in Montana during the early phases of the pandemic. As COVID-19 is now widespread across the United States, data no longer include out-of-state residents who test positive in Montana in order to align with Council of State and Territorial

Epidemiologists guidelines that classify cases by the individual's usual state of residence. This is standard practice for all communicable diseases to ensure accurate case reporting for Montana and the US. Additional individuals were diagnosed in Montana but are not included due to residency and/or the transient nature of their visit to the state: data for these individuals are reflected in the table immediately above.