

**Sheila Hogan, Director**

**Children/Families**

**Disabilities**

**Seniors**

**Health**

[Home](#) » [Public Health & Safety](#) » [Communicable Disease Epidemiology](#) » [Diseases A to Z](#) » [Coronavirus](#) » [Demographics](#)

## Coronavirus Disease 2019 (COVID-19)

[Analysis of COVID-19 Cases in Montana as of 07/24/2020](#)

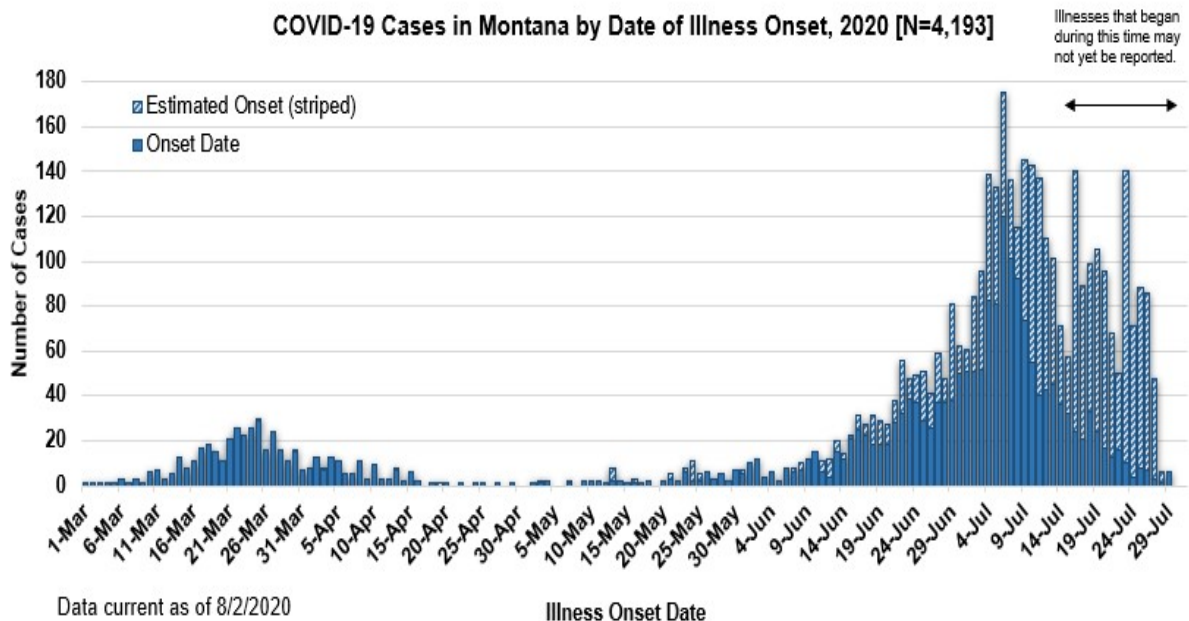
[Archive of COVID-19 Montana Analyses](#)



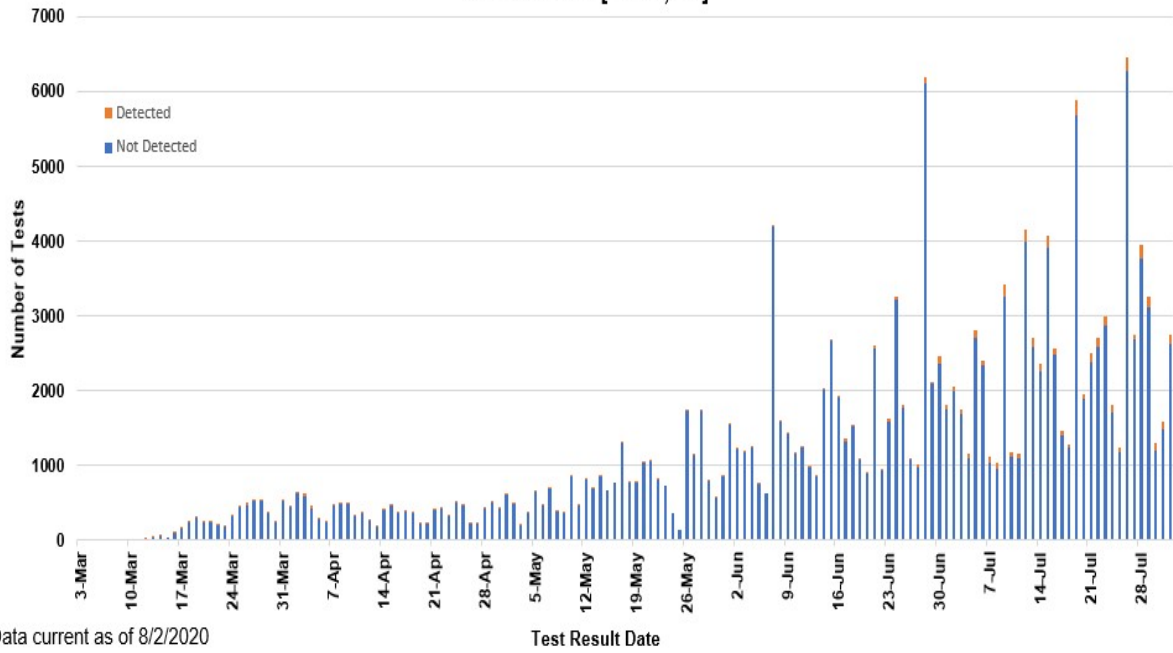
### Demographic Information on Confirmed Cases

COVID-19 Cases in Montana	
Total Number of Cases	4193
- Number of Deaths	61

*\* Tables and charts are updated by 10 am every morning.*



**SARS-Cov-2 PCR Testing at Montana Public Health Laboratory and Reference Laboratories,  
Montana 2020 [n=174,295]**



<b>County of Residence</b>	<b>Number of Cases</b>	<b>Number of Deaths</b>	<b>Community Transmission*</b>
Beaverhead	47		
Big Horn	338	9	Yes
Blaine	9		
Broadwater	10		
Carbon	58		
Cascade	146	2	Yes
Choteau	7		
Custer	52	2	
Daniels	2		
Dawson	16		
Deer Lodge	20		
Fallon	2		
Fergus	6		
Flathead	263	2	Yes
Gallatin	870	3	Yes
Garfield	12		
Glacier	56	1	
Golden Valley	3		
Granite	7		
Hill	40		
Jefferson	25		
Judith Basin	3		
Lake	166	1	

County of Residence	Number of Cases	Number of Deaths	Community Transmission*
Lewis and Clark	131	1	Yes
Liberty	1		
Lincoln	70	2	
Madison	75	1	
McCone	1		
Meagher	4		
Missoula	266	1	Yes
Musselshell	2		
Park	48		
Pondera	9		
Powder River	1		
Powell	2		
Ravalli	72	1	Yes
Richland	46	1	
Roosevelt	19		
Rosebud	22	1	Yes
Sanders	9		
Sheridan	3		
Silver Bow	66		
Stillwater	19		
Sweet Grass	4	1	
Teton	15		
Toole	31	6	
Treasure	2		
Valley	13		
Wheatland	3		
Wibaux	3		
Yellowstone	1098	26	Yes
Total	4193	61	

\* Community transmission - a community has identified cases who are unable to be linked with other known cases or travel. This status has been determined after consultation between state and local health departments.

Hospitalization Status	Number of Cases (percent of total)
Ever hospitalized	233 (4%)
Not Hospitalized	3947 (94%)
Under Investigation	13 (2%)
Total	4193

Age Group	Number of Cases (percent of total)
0-9 years	168 (4%)
10-19 years	333 (8%)
20-29 years	1109 (26%)
30-39 years	688 (16%)
40-49 years	510 (12%)
50-59 years	517 (12%)
60-69 years	461 (11%)
70-79 years	248 (6%)
80-89 years	123 (3%)
90-99 years	36 (1%)
Total	4193

Sex	Number of Cases (percent of total)
Female	2112 (50%)
Male	2081 (50%)
Total	4193

Race and Ethnicity	Number of Cases (percent of total)
White	2254 (54%)
American Indian, Alaska Native, Native Hawaiian, and Pacific Islander	466 (11%)
Asian	11 (<1%)
Black or African American	22 (<1%)
Other Race	34 (<1%)
Undetermined/Under investigation	1406 (33%)
Total	4193
<b>Among those with ethnicity specified:</b>	
Hispanic/Latino	173 (6%)

<b>Race and Ethnicity</b>	<b>Number of Cases (percent of total)</b>
Not Hispanic/Latino	2544 (94%)
Total	2717

<b>Current Status of Cases</b>	<b>Number of Cases (percent of total)</b>
Hospitalized	72 (2%)
Deceased	61 (1%)
Recovering	1594 (37%)
Recovered and released from isolation	2466 (60%)
Total number of cases	4193

**Location (at time of testing) of individuals diagnosed but not residing or counted in Montana:**

<b>County</b>	<b>Number of Cases (percent of total)</b>
Beaverhead	3 (2%)
Big Horn	1 (1%)
Carbon	3 (2%)
Cascade	18 (9%)
Custer	4 (2%)
Dawson	1 (1%)
Deer Lodge	1 (1%)
Fallon	1 (1%)
Fergus	2 (1%)
Flathead	44 (22%)
Gallatin	40 (20%)
Glacier	1 (1%)
Granite	1 (1%)
Lake	8 (4%)
Lewis and Clark	5 (3%)
Lincoln	3 (2%)
Madison	21 (11%)
Meagher	1 (1%)
Missoula	7 (4%)
Park	7 (4%)
Powell	1 (1%)
Ravalli	8 (4%)
Silver Bow	4 (3%)
Sweet Grass	1 (1%)

County	Number of Cases (percent of total)
Toole	2 (1%)
Yellowstone	13 (7%)
Total	201

Cases reported in the tables above include **13** residents of other states who were tested, isolated and/or hospitalized in Montana during the early phases of the pandemic. As COVID-19 is now widespread across the United States, data no longer include out-of-state residents who test positive in Montana in order to align with Council of State and Territorial Epidemiologists guidelines that classify cases by the individual's usual state of residence. This is standard practice for all communicable diseases to ensure accurate case reporting for Montana and the US. Additional individuals were diagnosed in Montana but are not included due to residency and/or the transient nature of their visit to the state: data for these individuals are reflected in the table immediately above.



## Communicable Disease Epidemiology

### Staff Listing



To submit a question or comment to the Communicable Disease Epidemiology Program, please click on the suggestion box to access our online form.

 [Diseases A-Z](#)

 [Disease Reporting](#)

 [Data and Reports](#)

 [Contact Us](#)

Other Program Areas

 [Tuberculosis \(TB\)](#)

 [Healthcare Associated Infections \(HAI\)](#)

 [Sexually Transmitted Diseases \(HIV/STD\)](#)

 [Antimicrobial Resistance](#)

 [Follow DPHHS](#)

*The DPHHS CDEpi Section mission is to create, maintain, support, and strengthen routine surveillance and detection systems and epidemiological investigation processes, as well as to expand these systems and processes in response to incidents of public health significance.*

---

[Nondiscrimination Notice/Policy](#)

[Notice of Use of Protected Health Information](#)

[Disclaimer](#)

[Contact Webmaster](#)

[Language Assistance Available](#)

[Español](#) | [Deutsch](#) | [繁體中文](#) | [日本語](#) | [Tagalog](#) | [Français](#) | [Русский](#) | [한국어](#) | [العربية](#) | [ไทย](#) | [Norsk](#) | [Tiếng Việt](#) | [український](#) | [Pennsilfaanisch Deitsch](#) | [Italiano](#)