

Sheila Hogan, Director

Children/Families

Disabilities

Seniors

Health

[Home](#) » [Public Health & Safety](#) » [Communicable Disease Epidemiology](#) » [Diseases A to Z](#) » [Coronavirus](#) » [Demographics](#)

## Coronavirus Disease 2019 (COVID-19)

[Analysis of COVID-19 Cases in Montana as of 07/24/2020](#)

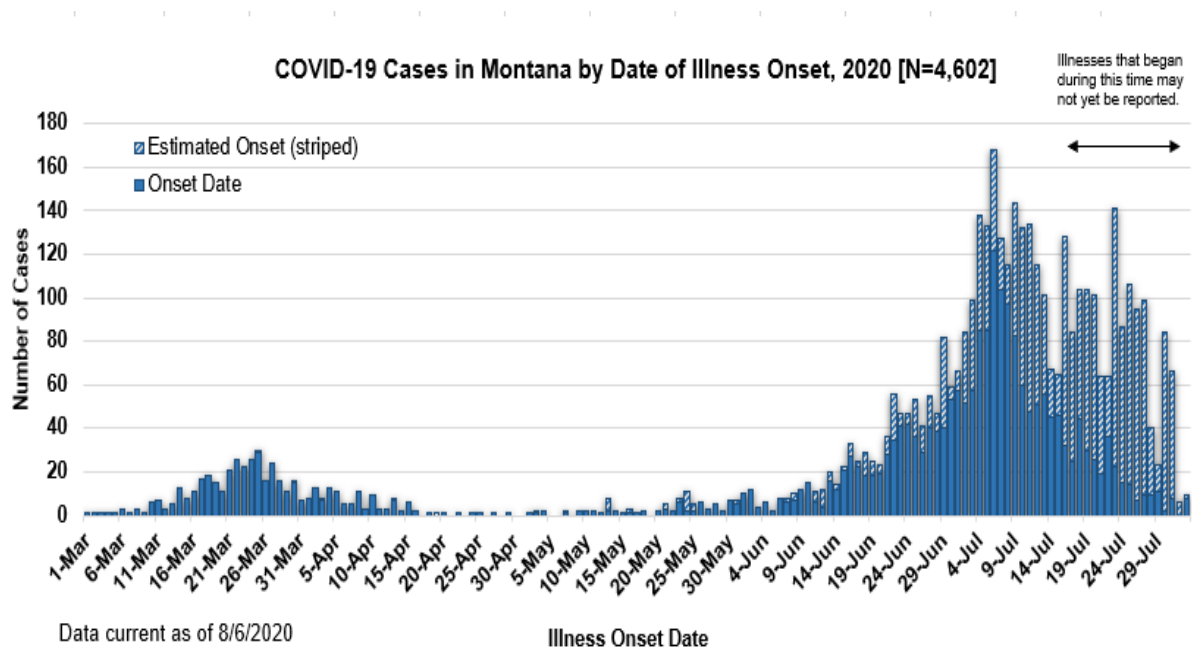
[Archive of COVID-19 Montana Analyses](#)



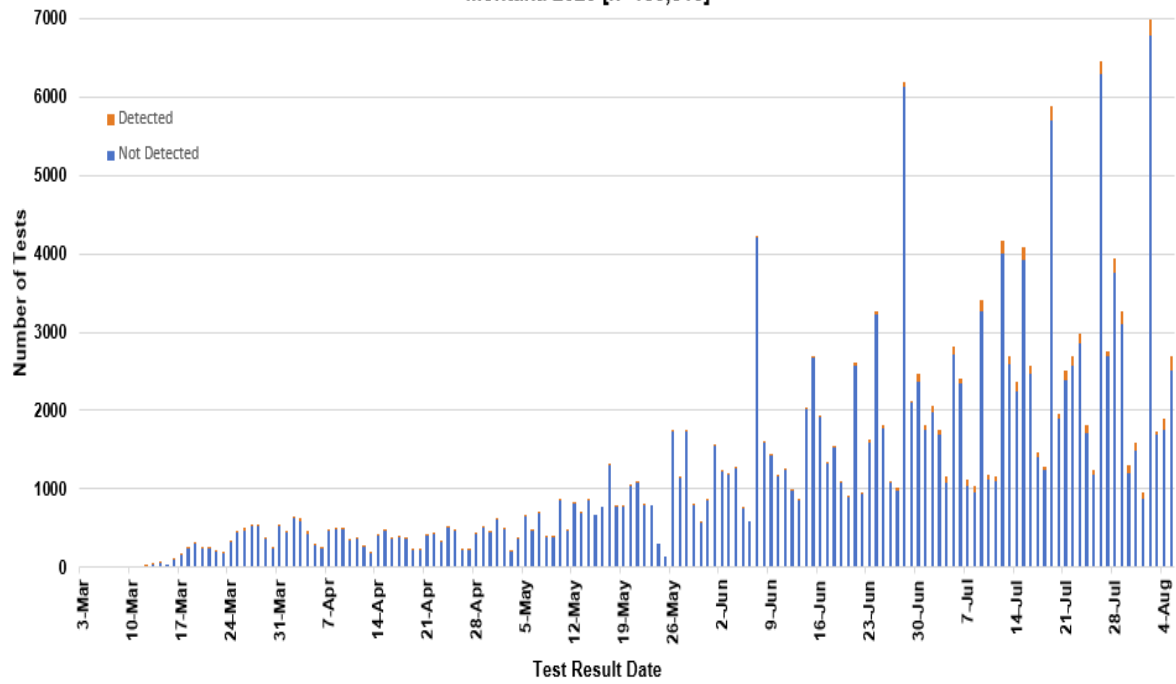
### Demographic Information on Confirmed Cases

COVID-19 Cases in Montana	
Total Number of Cases	4602
- Number of Deaths	65

*\* Tables and charts are updated by 10 am every morning.*



**SARS-Cov-2 PCR Testing at Montana Public Health Laboratory and Reference Laboratories,  
Montana 2020 [n=185,815]**



<b>County of Residence</b>	<b>Number of Cases</b>	<b>Number of Deaths</b>	<b>Community Transmission*</b>
Beaverhead	58		Yes
Big Horn	394	11	Yes
Blaine	10		
Broadwater	11		
Carbon	60		
Cascade	161	2	Yes
Choteau	7		
Custer	58	2	
Daniels	3		
Dawson	16		
Deer Lodge	23		
Fallon	2		
Fergus	9		
Flathead	301	2	Yes
Gallatin	908	3	Yes
Garfield	12		
Glacier	60	1	
Golden Valley	3		
Granite	13		
Hill	41		
Jefferson	27		
Judith Basin	3		

County of Residence	Number of Cases	Number of Deaths	Community Transmission*
Lake	176	1	
Lewis and Clark	151	1	Yes
Liberty	1		
Lincoln	73	2	
Madison	79	1	Yes
McCone	3		
Meagher	4		
Missoula	298	1	Yes
Musselshell	3		
Park	55		
Phillips	5		
Pondera	10		
Powder River	1		
Powell	2		
Prairie	1		
Ravalli	74	1	Yes
Richland	47	2	
Roosevelt	21		
Rosebud	32	1	Yes
Sanders	9		
Sheridan	4		
Silver Bow	75		
Stillwater	22		
Sweet Grass	5	1	
Teton	15		
Toole	40	6	
Treasure	2		
Valley	14		
Wheatland	3		
Wibaux	3		
Yellowstone	1191	27	Yes
Total	4602	65	

\* Community transmission - a community has identified cases who are unable to be linked with other known cases or travel. This status has been determined after consultation between state and local health departments.

Hospitalization Status	Number of Cases (percent of total)
Ever hospitalized	259 (6%)
Not Hospitalized	4311 (94%)

Hospitalization Status	Number of Cases (percent of total)
Under Investigation	32 (<1%)
Total	4602

Age Group	Number of Cases (percent of total)
0-9 years	175 (4%)
10-19 years	372 (8%)
20-29 years	1200 (26%)
30-39 years	767 (17%)
40-49 years	568 (12%)
50-59 years	571 (12%)
60-69 years	500 (11%)
70-79 years	277 (6%)
80-89 years	136 (3%)
90-99 years	36 (1%)
Total	4602

Sex	Number of Cases (percent of total)
Female	2309 (50%)
Male	2293 (50%)
Total	4602

Race and Ethnicity	Number of Cases (percent of total)
White	2388 (54%)
American Indian, Alaska Native, Native Hawaiian, and Pacific Islander	523 (12%)
Asian	12 (<1%)
Black or African American	22 (<1%)
Other Race	38 (1%)
Undetermined/Under investigation	1619 (33%)

<b>Race and Ethnicity</b>	<b>Number of Cases (percent of total)</b>
Total	4602
<b>Among those with ethnicity specified:</b>	
Hispanic/Latino	187 (6%)
Not Hispanic/Latino	2695 (94%)
Total	2882

<b>Current Status of Cases</b>	<b>Number of Cases (percent of total)</b>
Hospitalized	87 (2%)
Deceased	65 (1%)
Recovering	1494 (33%)
Recovered and released from isolation	2964 (64%)
Total number of cases	4602

**Location (at time of testing) of individuals diagnosed but not residing or counted in Montana:**

<b>County</b>	<b>Number of Cases (percent of total)</b>
Beaverhead	3 (1%)
Big Horn	1 (<1%)
Carbon	4 (2%)
Cascade	18 (9%)
Custer	4 (2%)
Dawson	1 (<1%)
Deer Lodge	1 (<1%)
Fallon	1 (<1%)
Fergus	2 (1%)
Flathead	46 (21%)
Gallatin	42 (20%)
Glacier	1 (<1%)
Granite	1 (<1%)
Lake	10 (5%)
Lewis and Clark	5 (2%)
Lincoln	3 (1%)
Madison	23 (11%)
Meagher	1 (<1%)
Missoula	7 (3%)
Park	8 (4%)

County	Number of Cases (percent of total)
Powell	1 (<1%)
Ravalli	8 (4%)
Silver Bow	4 (2%)
Stillwater	1 (<1%)
Sweet Grass	1 (<1%)
Toole	2 (1%)
Yellowstone	14 (7%)
Total	214

Cases reported in the tables above include **13** residents of other states who were tested, isolated and/or hospitalized in Montana during the early phases of the pandemic. As COVID-19 is now widespread across the United States, data no longer include out-of-state residents who test positive in Montana in order to align with Council of State and Territorial Epidemiologists guidelines that classify cases by the individual's usual state of residence. This is standard practice for all communicable diseases to ensure accurate case reporting for Montana and the US. Additional individuals were diagnosed in Montana but are not included due to residency and/or the transient nature of their visit to the state: data for these individuals are reflected in the table immediately above.



## Communicable Disease Epidemiology Staff Listing



To submit a question or comment to the Communicable Disease Epidemiology Program, please click on the suggestion box to access our online form.

 [Diseases A-Z](#)

 [Disease Reporting](#)

 [Data and Reports](#)

 [Contact Us](#)

Other Program Areas

 [Tuberculosis \(TB\)](#)

 [Healthcare Associated Infections \(HAI\)](#)

 [Sexually Transmitted Diseases \(HIV/STD\)](#)

 [Antimicrobial Resistance](#)



*The DPHHS CDEpi Section mission is to create, maintain, support, and strengthen routine surveillance and detection systems and epidemiological investigation processes, as well as to expand these systems and processes in response to incidents of public health significance.*

**Nondiscrimination Notice/Policy**

**Notice of Use of Protected Health Information**

**Disclaimer**

**Contact Webmaster**

**Language Assistance Available**

**Español | Deutsch | 繁體中文 | 日本語 | Tagalog | Français | Русский | 한국어 | العربية | ไทย | Norsk |  
Tiếng Việt | український | Pennsilfaanisch Deitsch | Italiano**