

Sheila Hogan, Director

Children/Families

Disabilities

Seniors

Health

[Home](#) » [Public Health & Safety](#) » [Communicable Disease Epidemiology](#) » [Diseases A to Z](#) » [Coronavirus](#) » [Demographics](#)

Coronavirus Disease 2019 (COVID-19)

[Analysis of COVID-19 Cases in Montana as of 07/24/2020](#)

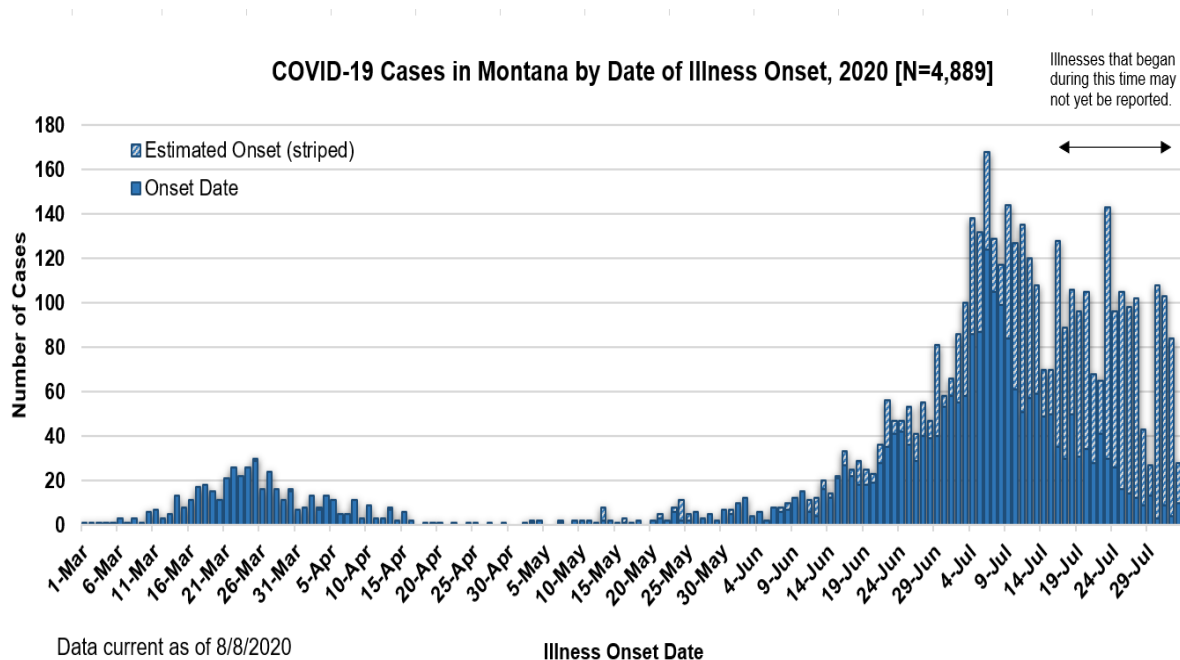
[Archive of COVID-19 Montana Analyses](#)



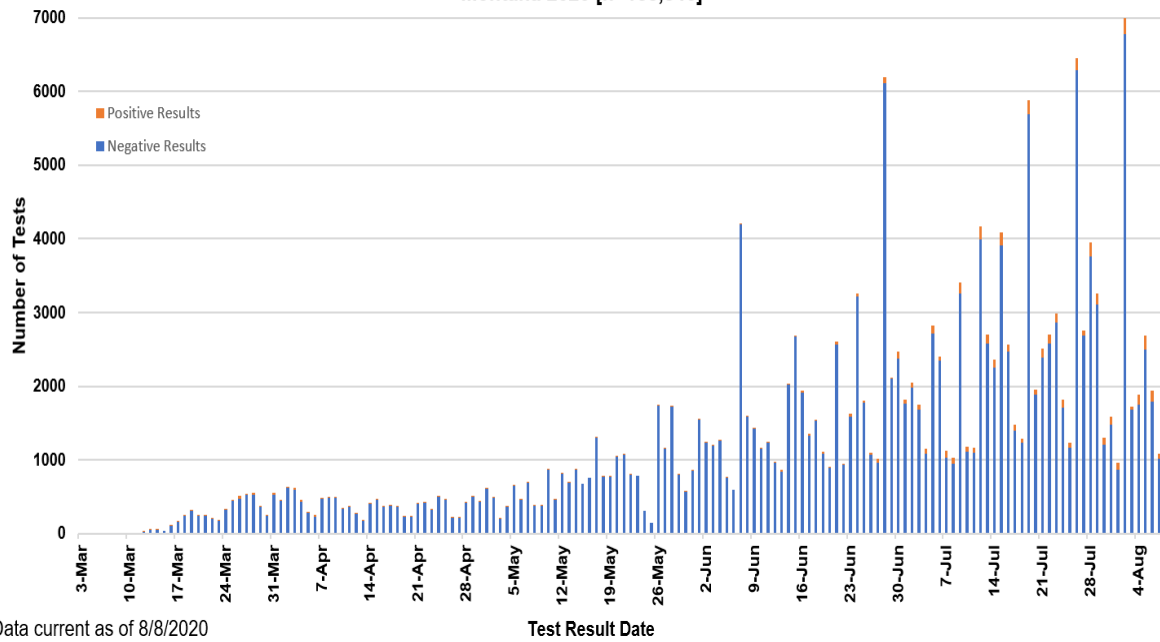
Demographic Information for Confirmed Cases

COVID-19 Cases in Montana	
Total Number of Cases	4889
- Number of Deaths	75

** Tables and charts are updated by 10 am every morning.*



**SARS-Cov-2 PCR Testing at Montana Public Health Laboratory and Reference Laboratories,
Montana 2020 [n=188,846]**



County of Residence	Number of Cases	Number of Deaths	Community Transmission*
Beaverhead	62		Yes
Big Horn	421	13	Yes
Blaine	10		
Broadwater	11		
Carbon	68		
Cascade	164	4	Yes
Choteau	10		
Custer	61	2	
Daniels	3		
Dawson	17		
Deer Lodge	25		
Fallon	2		
Fergus	9		
Flathead	330	2	Yes
Gallatin	930	3	Yes
Garfield	12		
Glacier	72	1	
Golden Valley	3		
Granite	16		
Hill	42	2	
Jefferson	28		
Judith Basin	3		
Lake	179	1	

County of Residence	Number of Cases	Number of Deaths	Community Transmission*
Lewis and Clark	156	1	Yes
Liberty	1		
Lincoln	76	2	
Madison	87	1	Yes
McCone	3		
Meagher	4		
Missoula	328	1	Yes
Musselshell	3		
Park	55		
Phillips	28		
Pondera	11		
Powder River	1		
Powell	2		
Prairie	1		
Ravalli	82	1	Yes
Richland	47	2	
Roosevelt	23		
Rosebud	33	1	Yes
Sanders	9		
Sheridan	5		
Silver Bow	85		
Stillwater	23	1	
Sweet Grass	5	1	
Teton	15		
Toole	45	6	
Treasure	2		
Valley	14		
Wheatland	3		
Wibaux	3		
Yellowstone	1261	30	Yes
Total	4889	75	

* Community transmission - a community has identified cases who are unable to be linked with other known cases or travel. This status has been determined after consultation between state and local health departments.

Hospitalization Status	Number of Cases (percent of total)
Ever hospitalized	268 (6%)
Not Hospitalized	4589 (94%)
Under Investigation	32 (<1%)

Hospitalization Status	Number of Cases (percent of total)
Total	4889

Age Group	Number of Cases (percent of total)
0-9 years	187 (4%)
10-19 years	407 (8%)
20-29 years	1260 (26%)
30-39 years	817 (17%)
40-49 years	612 (12%)
50-59 years	609 (12%)
60-69 years	523 (11%)
70-79 years	293 (6%)
80-89 years	141 (3%)
90-99 years	40 (1%)
Total	4889

Sex	Number of Cases (percent of total)
Female	2452 (50%)
Male	2437 (50%)
Total	4889

Race and Ethnicity	Number of Cases (percent of total)
White	2531 (52%)
American Indian, Alaska Native, Native Hawaiian, and Pacific Islander	559 (11%)
Asian	13 (<1%)
Black or African American	24 (<1%)
Other Race	40 (1%)
Undetermined/Under investigation	1722 (35%)
Total	4889

Race and Ethnicity	Number of Cases (percent of total)
Among those with ethnicity specified:	
Hispanic/Latino	193 (6%)
Not Hispanic/Latino	2850 (94%)
Total	3043

Current Status of Cases	Number of Cases (percent of total)
Hospitalized	81 (2%)
Deceased	75 (1.5%)
Recovering	1478 (30%)
Recovered and released from isolation	3255 (67%)
Total number of cases	4889

Location (at time of testing) of individuals diagnosed but not residing or counted in Montana:

County	Number of Cases (percent of total)
Beaverhead	3 (1%)
Big Horn	1 (<1%)
Carbon	3 (1%)
Cascade	18 (9%)
Custer	4 (2%)
Dawson	1 (<1%)
Deer Lodge	1 (<1%)
Fallon	1 (<1%)
Fergus	2 (1%)
Flathead	46 (21%)
Gallatin	42 (20%)
Glacier	1 (<1%)
Granite	1 (<1%)
Lake	10 (5%)
Lewis and Clark	5 (2%)
Lincoln	3 (1%)
Madison	23 (11%)
Meagher	1 (<1%)
Missoula	7 (3%)
Park	8 (4%)
Powell	1 (<1%)

County	Number of Cases (percent of total)
Ravalli	8 (4%)
Silver Bow	4 (2%)
Stillwater	1 (<1%)
Sweet Grass	1 (<1%)
Toole	2 (1%)
Yellowstone	14 (7%)
Total	213

Cases reported in the tables above include **13** residents of other states who were tested, isolated and/or hospitalized in Montana during the early phases of the pandemic. As COVID-19 is now widespread across the United States, data no longer include out-of-state residents who test positive in Montana in order to align with Council of State and Territorial Epidemiologists guidelines that classify cases by the individual's usual state of residence. This is standard practice for all communicable diseases to ensure accurate case reporting for Montana and the US. Additional individuals were diagnosed in Montana but are not included due to residency and/or the transient nature of their visit to the state: data for these individuals are reflected in the table immediately above.



Communicable Disease Epidemiology Staff Listing



To submit a question or comment to the Communicable Disease Epidemiology Program, please click on the suggestion box to access our online form.

 [Diseases A-Z](#)

 [Disease Reporting](#)

 [Data and Reports](#)

 [Contact Us](#)

Other Program Areas

 [Tuberculosis \(TB\)](#)

 [Healthcare Associated Infections \(HAI\)](#)

 [Sexually Transmitted Diseases \(HIV/STD\)](#)

 [Antimicrobial Resistance](#)



The DPHHS CDEpi Section mission is to create, maintain, support, and strengthen routine surveillance and detection systems and epidemiological investigation processes, as well as to expand these systems and processes in response to incidents of public health significance.

Nondiscrimination Notice/Policy

Notice of Use of Protected Health Information

Disclaimer

Contact Webmaster

Language Assistance Available

**Español | Deutsch | 繁體中文 | 日本語 | Tagalog | Français | Русский | 한국어 | العربية | ไทย | Norsk |
Tiếng Việt | український | Pennsilfaanisch Deitsch | Italiano**