

**Sheila Hogan, Director**

**Children/Families**

**Disabilities**

**Seniors**

**Health**

[Home](#) » [Public Health & Safety](#) » [Communicable Disease Epidemiology](#) » [Diseases A to Z](#) » [Coronavirus](#) » [Demographics](#)

## Coronavirus Disease 2019 (COVID-19)

[Analysis of COVID-19 Cases in Montana as of 8/7/2020](#)

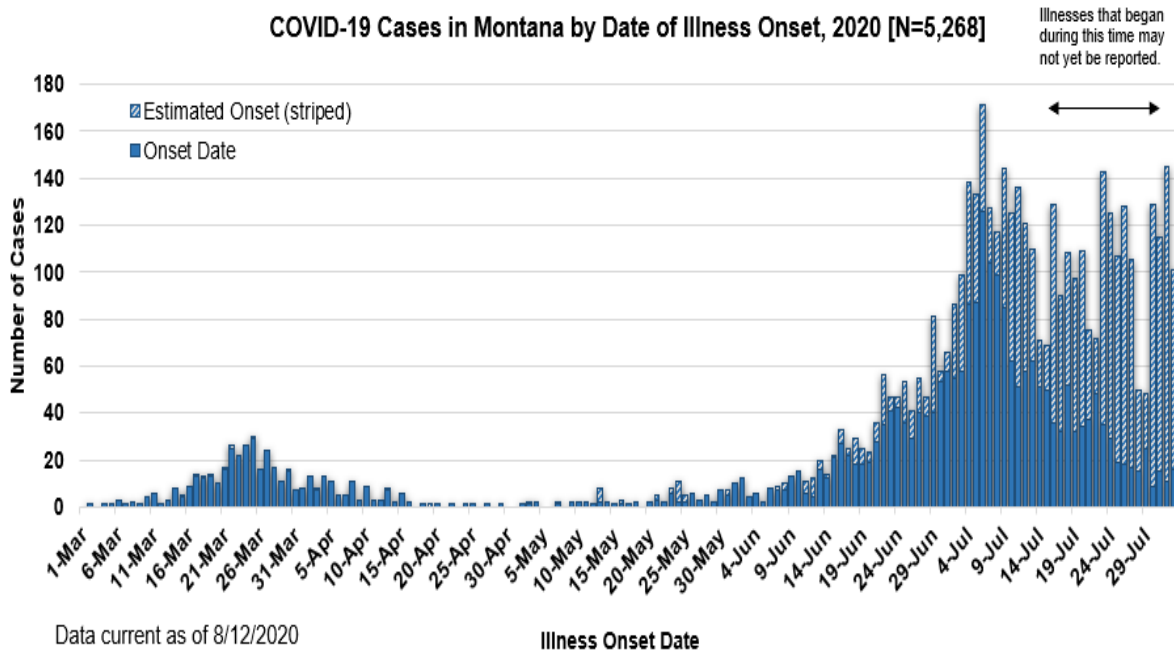
[Archive of COVID-19 Montana Analyses](#)



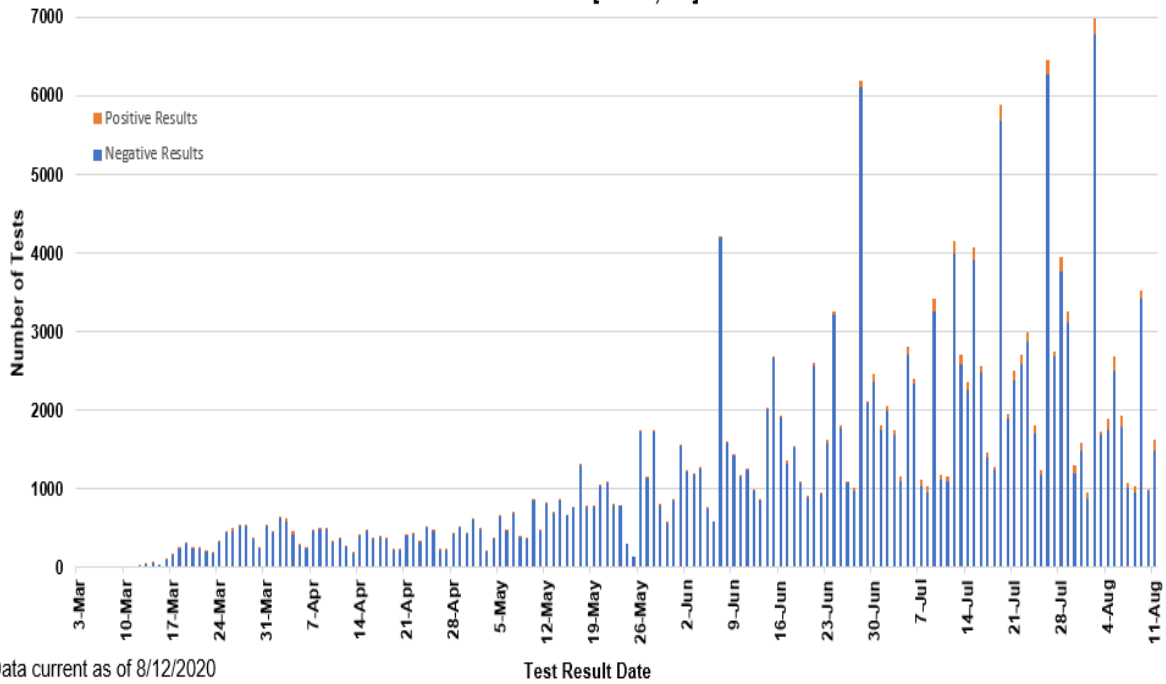
### Demographic Information for Confirmed Cases

COVID-19 Cases in Montana	
Total Number of Cases	5268
- Number of Deaths	80

*\* Tables and charts are updated by 10 am every morning.*



**SARS-Cov-2 PCR Testing at Montana Public Health Laboratory and Reference Laboratories,  
Montana 2020 [n=196,036]**



<b>County of Residence</b>	<b>Number of Cases</b>	<b>Number of Deaths</b>	<b>Community Transmission*</b>
Beaverhead	65		Yes
Big Horn	464	14	Yes
Blaine	13		
Broadwater	14		
Carbon	74		
Cascade	167	4	Yes
Choteau	10		
Custer	61	2	
Daniels	3		
Dawson	20		
Deer Lodge	26		
Fallon	2		
Fergus	14		
Flathead	357	3	Yes
Gallatin	959	3	Yes
Garfield	12		
Glacier	77	1	Yes
Golden Valley	3		
Granite	17		
Hill	46	2	
Jefferson	29		
Judith Basin	3		

County of Residence	Number of Cases	Number of Deaths	Community Transmission*
Lake	184	1	
Lewis and Clark	163	2	Yes
Liberty	1		
Lincoln	77	2	
Madison	83	1	Yes
McCone	5		
Meagher	4		
Mineral	2		
Missoula	336	1	Yes
Musselshell	3		
Park	57		
Phillips	68		
Pondera	11		
Powder River	1		
Powell	2		
Prairie	1		
Ravalli	83	2	Yes
Richland	47	2	
Roosevelt	24		
Rosebud	53	1	Yes
Sanders	10		
Sheridan	5		
Silver Bow	102		Yes
Stillwater	28	1	
Sweet Grass	5	1	
Teton	15		
Toole	44	6	
Treasure	2		
Valley	23		
Wheatland	3		
Wibaux	3		
Yellowstone	1387	31	Yes
Total	5268	80	

\* Community transmission - a community has identified cases who are unable to be linked with other known cases or travel. This status has been determined after consultation between state and local health departments.

Hospitalization Status	Number of Cases (percent of total)
Ever hospitalized	301 (6%)

Hospitalization Status	Number of Cases (percent of total)
Not Hospitalized	4936 (94%)
Under Investigation	31 (<1%)
Total	5268

Age Group	Number of Cases (percent of total)
0-9 years	211 (4%)
10-19 years	447 (8%)
20-29 years	1363 (26%)
30-39 years	877 (17%)
40-49 years	659 (12%)
50-59 years	659 (12%)
60-69 years	556 (11%)
70-79 years	308 (6%)
80-89 years	147 (3%)
90-99 years	41 (1%)
Total	5268

Sex	Number of Cases (percent of total)
Female	2648 (50%)
Male	2620 (50%)
Total	5268

Race and Ethnicity	Number of Cases (percent of total)
White	2725 (52%)
American Indian, Alaska Native, Native Hawaiian, and Pacific Islander	633 (12%)
Asian	16 (<1%)
Black or African American	25 (<1%)
Other Race	41 (1%)

<b>Race and Ethnicity</b>	<b>Number of Cases (percent of total)</b>
Undetermined/Under investigation	1828 (35%)
Total	5268
<b>Among those with ethnicity specified:</b>	
Hispanic/Latino	205 (6%)
Not Hispanic/Latino	3107 (94%)
Total	3312

<b>Current Status of Cases</b>	<b>Number of Cases (percent of total)</b>
Hospitalized	97 (2%)
Deceased	80 (1.5%)
Recovering	1493 (28%)
Recovered and released from isolation	3598 (68%)
Total number of cases	5268

**Location (at time of testing) of individuals diagnosed but not residing or counted in Montana:**

<b>County</b>	<b>Number of Cases (percent of total)</b>
Beaverhead	3 (1%)
Big Horn	1 (<1%)
Carbon	3 (1%)
Cascade	18 (9%)
Custer	4 (2%)
Dawson	1 (<1%)
Deer Lodge	1 (<1%)
Fallon	1 (<1%)
Fergus	2 (1%)
Flathead	46 (21%)
Gallatin	43 (20%)
Glacier	1 (<1%)
Granite	1 (<1%)
Lake	10 (5%)
Lewis and Clark	5 (2%)
Lincoln	3 (1%)
Madison	23 (11%)
Meagher	1 (<1%)
Missoula	7 (3%)

County	Number of Cases (percent of total)
Park	8 (4%)
Powell	1 (<1%)
Ravalli	8 (4%)
Silver Bow	5 (2%)
Stillwater	1 (<1%)
Sweet Grass	1 (<1%)
Toole	2 (1%)
Yellowstone	14 (7%)
Total	215

Cases reported in the tables above include **13** residents of other states who were tested, isolated and/or hospitalized in Montana during the early phases of the pandemic. As COVID-19 is now widespread across the United States, data no longer include out-of-state residents who test positive in Montana in order to align with Council of State and Territorial Epidemiologists guidelines that classify cases by the individual's usual state of residence. This is standard practice for all communicable diseases to ensure accurate case reporting for Montana and the US. Additional individuals were diagnosed in Montana but are not included due to residency and/or the transient nature of their visit to the state: data for these individuals are reflected in the table immediately above.



## Communicable Disease Epidemiology

### Staff Listing



To submit a question or comment to the Communicable Disease Epidemiology Program, please click on the suggestion box to access our online form.

 [Diseases A-Z](#)

 [Disease Reporting](#)

 [Data and Reports](#)

 [Contact Us](#)

Other Program Areas

 [Tuberculosis \(TB\)](#)

 [Healthcare Associated Infections \(HAI\)](#)

 [Sexually Transmitted Diseases \(HIV/STD\)](#)



*The DPHHS CDEpi Section mission is to create, maintain, support, and strengthen routine surveillance and detection systems and epidemiological investigation processes, as well as to expand these systems and processes in response to incidents of public health significance.*

**Nondiscrimination Notice/Policy**

**Notice of Use of Protected Health Information**

**Disclaimer**

**Contact Webmaster**

**Language Assistance Available**

**Español | Deutsch | 繁體中文 | 日本語 | Tagalog | Français | Русский | 한국어 | العربية | ไทย | Norsk |  
Tiếng Việt | український | Pennsilfaanisch Deitsch | Italiano**