

Sheila Hogan, Director

Children/Families

Disabilities

Seniors

Health

[Home](#) » [Public Health & Safety](#) » [Communicable Disease Epidemiology](#) » [Diseases A to Z](#) » [Coronavirus](#) » [Demographics](#)

Coronavirus Disease 2019 (COVID-19)

[Analysis of COVID-19 Cases in Montana as of 8/7/2020](#)

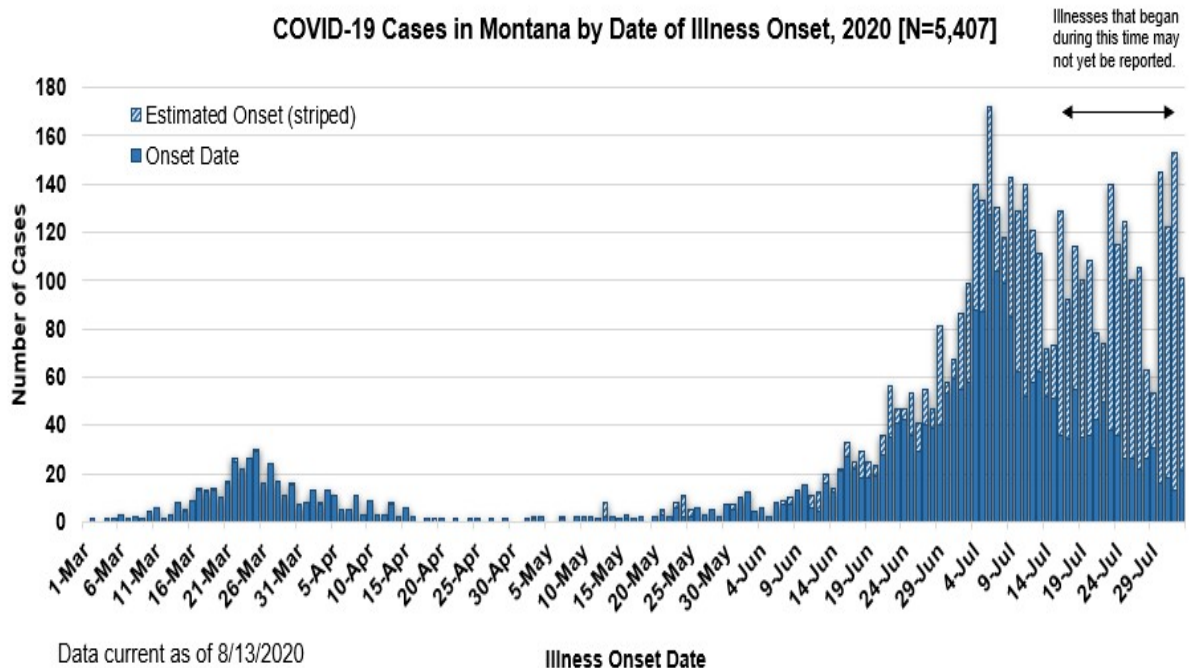
[Archive of COVID-19 Montana Analyses](#)



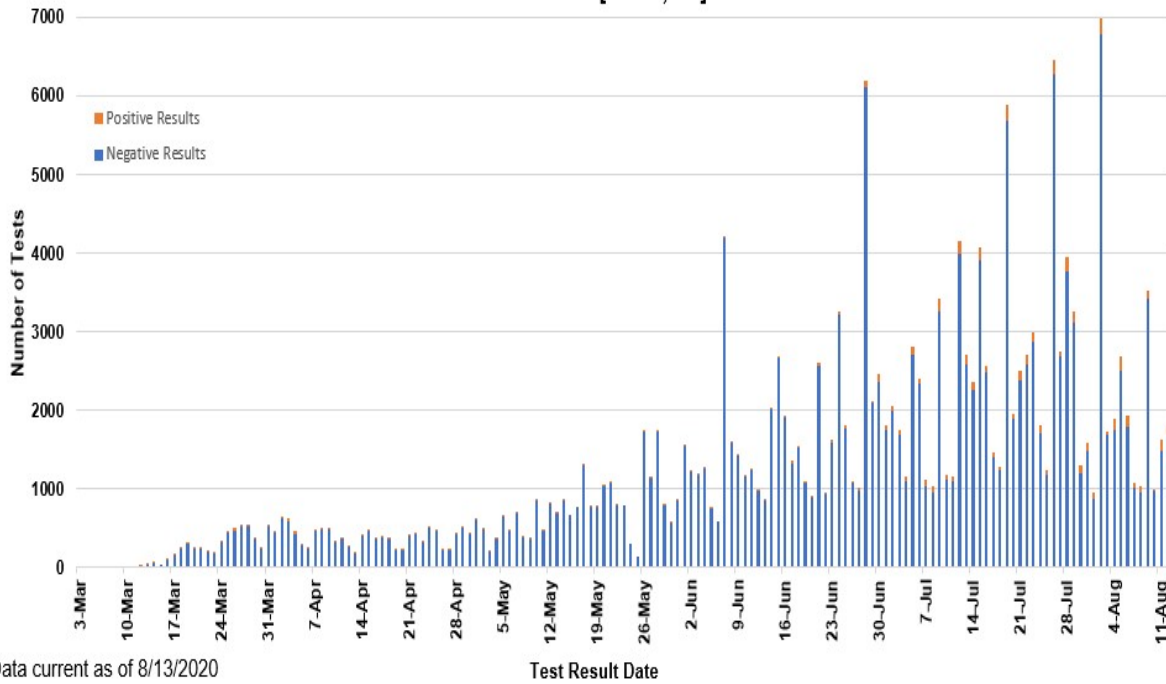
Demographic Information for Confirmed Cases

COVID-19 Cases in Montana	
Total Number of Cases	5407
- Number of Deaths	81

** Tables and charts are updated by 10 am every morning.*



**SARS-Cov-2 PCR Testing at Montana Public Health Laboratory and Reference Laboratories,
Montana 2020 [n=197,820]**



Data current as of 8/13/2020

County of Residence	Number of Cases	Number of Deaths	Community Transmission*
Beaverhead	68		Yes
Big Horn	477	14	Yes
Blaine	13		
Broadwater	14		
Carbon	75		
Cascade	170	4	Yes
Choteau	10		
Custer	61	2	
Daniels	3		
Dawson	27		
Deer Lodge	26		
Fallon	2		
Fergus	18		
Flathead	364	3	Yes
Gallatin	970	3	Yes
Garfield	12		
Glacier	82	1	Yes
Golden Valley	3		
Granite	18		
Hill	46	2	
Jefferson	29		
Judith Basin	3		

County of Residence	Number of Cases	Number of Deaths	Community Transmission*
Lake	184	1	
Lewis and Clark	168	2	Yes
Liberty	1		
Lincoln	78	2	
Madison	83	1	Yes
McCone	5		
Meagher	4		
Mineral	2		
Missoula	346	1	Yes
Musselshell	3		
Park	60		
Phillips	78		
Pondera	11		
Powder River	1		
Powell	2		
Prairie	1		
Ravalli	84	2	Yes
Richland	48	2	
Roosevelt	25		
Rosebud	58	1	Yes
Sanders	11		
Sheridan	5		
Silver Bow	103		Yes
Stillwater	29	1	
Sweet Grass	5	1	
Teton	15		
Toole	44	6	
Treasure	2		
Valley	30		
Wheatland	3		
Wibaux	3		
Yellowstone	1424	31	Yes
Total	5407	80	

* Community transmission - a community has identified cases who are unable to be linked with other known cases or travel. This status has been determined after consultation between state and local health departments.

Hospitalization Status	Number of Cases (percent of total)
Ever hospitalized	315 (5.8%)

Hospitalization Status	Number of Cases (percent of total)
Not Hospitalized	5061 (93.6%)
Under Investigation	31 (<1%)
Total	5407

Age Group	Number of Cases (percent of total)
0-9 years	2118 (4%)
10-19 years	465 (8.6%)
20-29 years	1397 (25.8%)
30-39 years	892 (16.5%)
40-49 years	679 (12.6%)
50-59 years	678 (12.5%)
60-69 years	574 (10.6%)
70-79 years	314 (5.8%)
80-89 years	148 (2.7%)
90-99 years	42 (<1%)
Total	5407

Sex	Number of Cases (percent of total)
Female	26720 (50.3%)
Male	2687 (49.7%)
Total	5407

Race and Ethnicity	Number of Cases (percent of total)
White	2914 (53.9%)
American Indian, Alaska Native, Native Hawaiian, and Pacific Islander	712 (13.1%)
Asian	17 (<1%)
Black or African American	29 (<1%)
Other Race	49 (1%)

Race and Ethnicity	Number of Cases (percent of total)
Undetermined/Under investigation	1686 (35%)
Total	5407
Among those with ethnicity specified:	
Hispanic/Latino	227 (6.3%)
Not Hispanic/Latino	3362 (93.7%)
Total	3589

Current Status of Cases	Number of Cases (percent of total)
Hospitalized	101 (1.9%)
Deceased	81 (1.5%)
Recovering	1288 (23.8%)
Recovered and released from isolation	3937 (72.8%)
Total number of cases	5407

Location (at time of testing) of individuals diagnosed but not residing or counted in Montana:

County	Number of Cases (percent of total)
Beaverhead	3 (1%)
Big Horn	1 (<1%)
Carbon	3 (1%)
Cascade	20 (9%)
Custer	4 (2%)
Dawson	1 (<1%)
Deer Lodge	1 (<1%)
Fallon	1 (<1%)
Fergus	2 (1%)
Flathead	46 (21%)
Gallatin	43 (20%)
Glacier	1 (<1%)
Granite	1 (<1%)
Lake	10 (5%)
Lewis and Clark	5 (2%)
Lincoln	3 (1%)
Madison	23 (11%)
Meagher	1 (<1%)
Missoula	7 (3%)

County	Number of Cases (percent of total)
Park	8 (4%)
Powell	1 (<1%)
Ravalli	8 (4%)
Silver Bow	5 (2%)
Stillwater	1 (<1%)
Sweet Grass	1 (<1%)
Toole	2 (1%)
Yellowstone	19 (9%)
Total	221

Cases reported in the tables above include **13** residents of other states who were tested, isolated and/or hospitalized in Montana during the early phases of the pandemic. As COVID-19 is now widespread across the United States, data no longer include out-of-state residents who test positive in Montana in order to align with Council of State and Territorial Epidemiologists guidelines that classify cases by the individual's usual state of residence. This is standard practice for all communicable diseases to ensure accurate case reporting for Montana and the US. Additional individuals were diagnosed in Montana but are not included due to residency and/or the transient nature of their visit to the state: data for these individuals are reflected in the table immediately above.



Communicable Disease Epidemiology

Staff Listing



To submit a question or comment to the Communicable Disease Epidemiology Program, please click on the suggestion box to access our online form.

 [Diseases A-Z](#)

 [Disease Reporting](#)

 [Data and Reports](#)

 [Contact Us](#)

Other Program Areas

 [Tuberculosis \(TB\)](#)

 [Healthcare Associated Infections \(HAI\)](#)

 [Sexually Transmitted Diseases \(HIV/STD\)](#)



The DPHHS CDEpi Section mission is to create, maintain, support, and strengthen routine surveillance and detection systems and epidemiological investigation processes, as well as to expand these systems and processes in response to incidents of public health significance.

Nondiscrimination Notice/Policy

Notice of Use of Protected Health Information

Disclaimer

Contact Webmaster

Language Assistance Available

**Español | Deutsch | 繁體中文 | 日本語 | Tagalog | Français | Русский | 한국어 | العربية | ไทย | Norsk |
Tiếng Việt | український | Pennsilfaanisch Deitsch | Italiano**