

**Sheila Hogan, Director**

**Children/Families**

**Disabilities**

**Seniors**

**Health**

[Home](#) » [Public Health & Safety](#) » [Communicable Disease Epidemiology](#) » [Diseases A to Z](#) » [Coronavirus](#) » [Demographics](#)

## Coronavirus Disease 2019 (COVID-19)

[Analysis of COVID-19 Cases in Montana as of 8/7/2020](#)

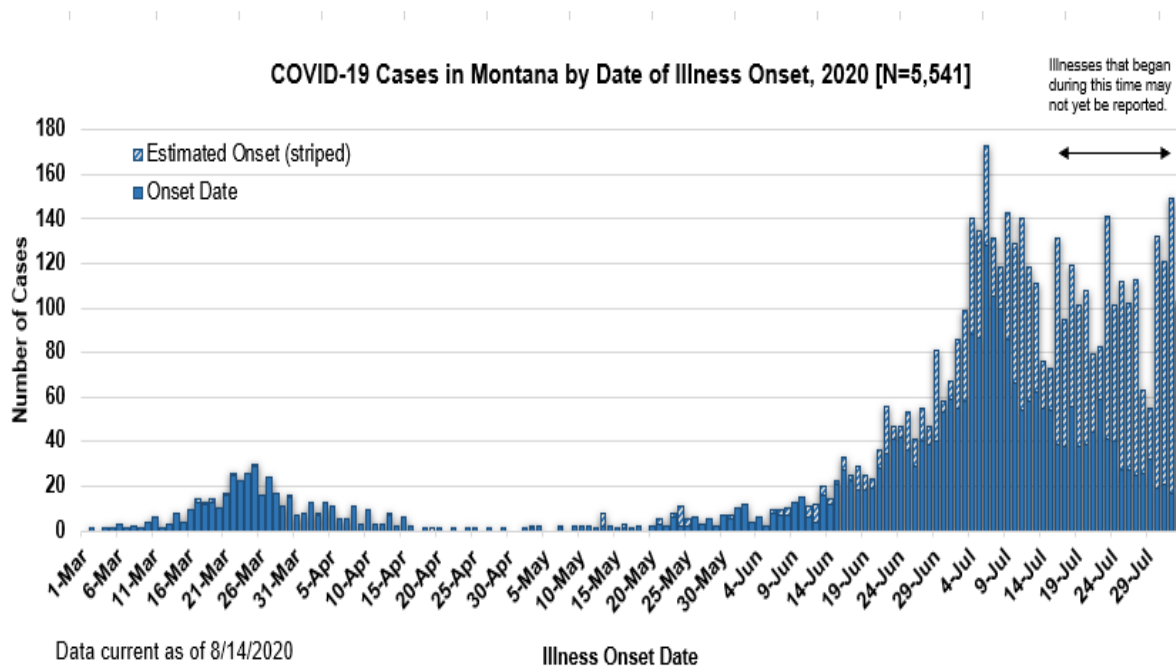
[Archive of COVID-19 Montana Analyses](#)



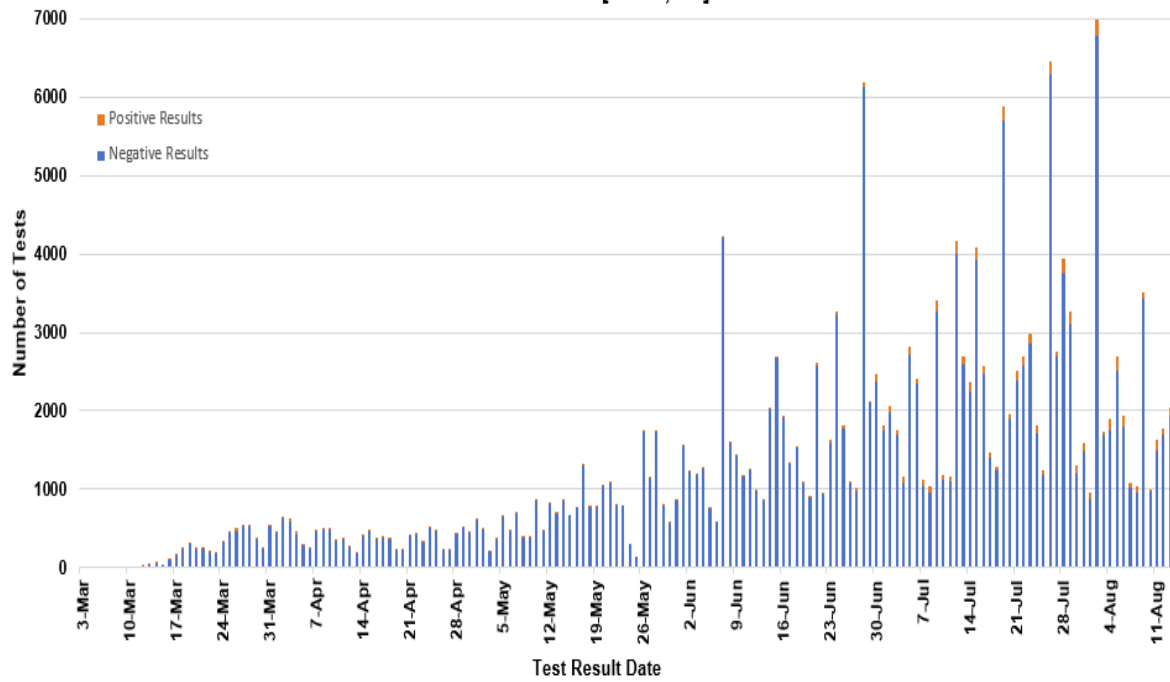
### Demographic Information for Confirmed Cases

COVID-19 Cases in Montana	
Total Number of Cases	5541
- Number of Deaths	81

*\* Tables and charts are updated by 10 am every morning.*



**SARS-Cov-2 PCR Testing at Montana Public Health Laboratory and Reference Laboratories,  
Montana 2020 [n=199,861]**



<b>County of Residence</b>	<b>Number of Cases</b>	<b>Number of Deaths</b>	<b>Community Transmission*</b>
Beaverhead	68		Yes
Big Horn	492	14	Yes
Blaine	14		
Broadwater	14		
Carbon	75		
Cascade	179	4	Yes
Choteau	10		
Custer	61	2	
Daniels	3		
Dawson	29		
Deer Lodge	28		
Fallon	2		
Fergus	19		
Flathead	376	3	Yes
Gallatin	977	3	Yes
Garfield	12		
Glacier	87	1	Yes
Golden Valley	3		
Granite	18		
Hill	48	2	
Jefferson	30		
Judith Basin	3		

County of Residence	Number of Cases	Number of Deaths	Community Transmission*
Lake	184	1	
Lewis and Clark	171	2	Yes
Liberty	1		
Lincoln	78	2	
Madison	84	1	Yes
McCone	5		
Meagher	4		
Mineral	2		
Missoula	357	1	Yes
Musselshell	4		
Park	62		
Phillips	85		
Pondera	11		
Powder River	1		
Powell	2		
Prairie	1		
Ravalli	85	2	Yes
Richland	48	2	
Roosevelt	29		
Rosebud	65	1	Yes
Sanders	11		
Sheridan	5		
Silver Bow	104		Yes
Stillwater	29	1	
Sweet Grass	5	1	
Teton	15		
Toole	44	6	
Treasure	2		
Valley	30		
Wheatland	3		
Wibaux	3		
Yellowstone	1463	32	Yes
Total	5541	81	

\* Community transmission - a community has identified cases who are unable to be linked with other known cases or travel. This status has been determined after consultation between state and local health departments.

Hospitalization Status	Number of Cases (percent of total)
Ever hospitalized	319 (6%)

<b>Hospitalization Status</b>	<b>Number of Cases (percent of total)</b>
Not Hospitalized	5191 (93%)
Under Investigation	31 (1%)
Total	5541

<b>Age Group</b>	<b>Number of Cases (percent of total)</b>
0-9 years	222 (4%)
10-19 years	482 (8.7%)
20-29 years	1433 (25.8%)
30-39 years	924 (16.7%)
40-49 years	696 (12.5%)
50-59 years	693 (12.5%)
60-69 years	583 (10.5%)
70-79 years	315 (5.7%)
80-89 years	151 (2.7%)
90-99 years	42 (<1%)
Total	5541

<b>Sex</b>	<b>Number of Cases (percent of total)</b>
Female	2795 (50.4%)
Male	2746 (49.6%)
Total	5541

<b>Race and Ethnicity</b>	<b>Number of Cases (percent of total)</b>
White	3038 (54.8%)
American Indian, Alaska Native, Native Hawaiian, and Pacific Islander	742 (13.4%)
Asian	20 (<1%)
Black or African American	31 (<1%)
Other Race	52 (1%)

<b>Race and Ethnicity</b>	<b>Number of Cases (percent of total)</b>
Undetermined/Under investigation	1656 (29.8%)
Total	5541
<b>Among those with ethnicity specified:</b>	
Hispanic/Latino	233 (6.2%)
Not Hispanic/Latino	3515 (93.8%)
Total	3748

<b>Current Status of Cases</b>	<b>Number of Cases (percent of total)</b>
Hospitalized	86 (1.9%)
Deceased	81 (1.5%)
Recovering	1368 (24.7%)
Recovered and released from isolation	4011 (72.3%)
Total number of cases	5541

**Location (at time of testing) of individuals diagnosed but not residing or counted in Montana:**

<b>County</b>	<b>Number of Cases (percent of total)</b>
Beaverhead	3 (1%)
Big Horn	1 (<1%)
Carbon	3 (1%)
Cascade	20 (9%)
Custer	4 (2%)
Dawson	1 (<1%)
Deer Lodge	1 (<1%)
Fallon	1 (<1%)
Fergus	2 (1%)
Flathead	46 (21%)
Gallatin	43 (20%)
Glacier	1 (<1%)
Granite	1 (<1%)
Lake	10 (5%)
Lewis and Clark	5 (2%)
Lincoln	3 (1%)
Madison	23 (11%)
Meagher	1 (<1%)
Missoula	7 (3%)

County	Number of Cases (percent of total)
Park	8 (4%)
Powell	1 (<1%)
Ravalli	8 (4%)
Silver Bow	4 (2%)
Stillwater	1 (<1%)
Sweet Grass	1 (<1%)
Toole	2 (1%)
Yellowstone	19 (9%)
Total	222

Cases reported in the tables above include **13** residents of other states who were tested, isolated and/or hospitalized in Montana during the early phases of the pandemic. As COVID-19 is now widespread across the United States, data no longer include out-of-state residents who test positive in Montana in order to align with Council of State and Territorial Epidemiologists guidelines that classify cases by the individual's usual state of residence. This is standard practice for all communicable diseases to ensure accurate case reporting for Montana and the US. Additional individuals were diagnosed in Montana but are not included due to residency and/or the transient nature of their visit to the state: data for these individuals are reflected in the table immediately above.



## Communicable Disease Epidemiology

### Staff Listing



To submit a question or comment to the Communicable Disease Epidemiology Program, please click on the suggestion box to access our online form.

 [Diseases A-Z](#)

 [Disease Reporting](#)

 [Data and Reports](#)

 [Contact Us](#)

Other Program Areas

 [Tuberculosis \(TB\)](#)

 [Healthcare Associated Infections \(HAI\)](#)

 [Sexually Transmitted Diseases \(HIV/STD\)](#)



*The DPHHS CDEpi Section mission is to create, maintain, support, and strengthen routine surveillance and detection systems and epidemiological investigation processes, as well as to expand these systems and processes in response to incidents of public health significance.*

**Nondiscrimination Notice/Policy**

**Notice of Use of Protected Health Information**

**Disclaimer**

**Contact Webmaster**

**Language Assistance Available**

**Español | Deutsch | 繁體中文 | 日本語 | Tagalog | Français | Русский | 한국어 | العربية | ไทย | Norsk |  
Tiếng Việt | український | Pennsilfaanisch Deitsch | Italiano**