

Sheila Hogan, Director

Children/Families

Disabilities

Seniors

Health

[Home](#) » [Public Health & Safety](#) » [Communicable Disease Epidemiology](#) » [Diseases A to Z](#) » [Coronavirus](#) » [Demographics](#)

## Coronavirus Disease 2019 (COVID-19)

[Analysis of COVID-19 Cases in Montana as of 8/7/2020](#)

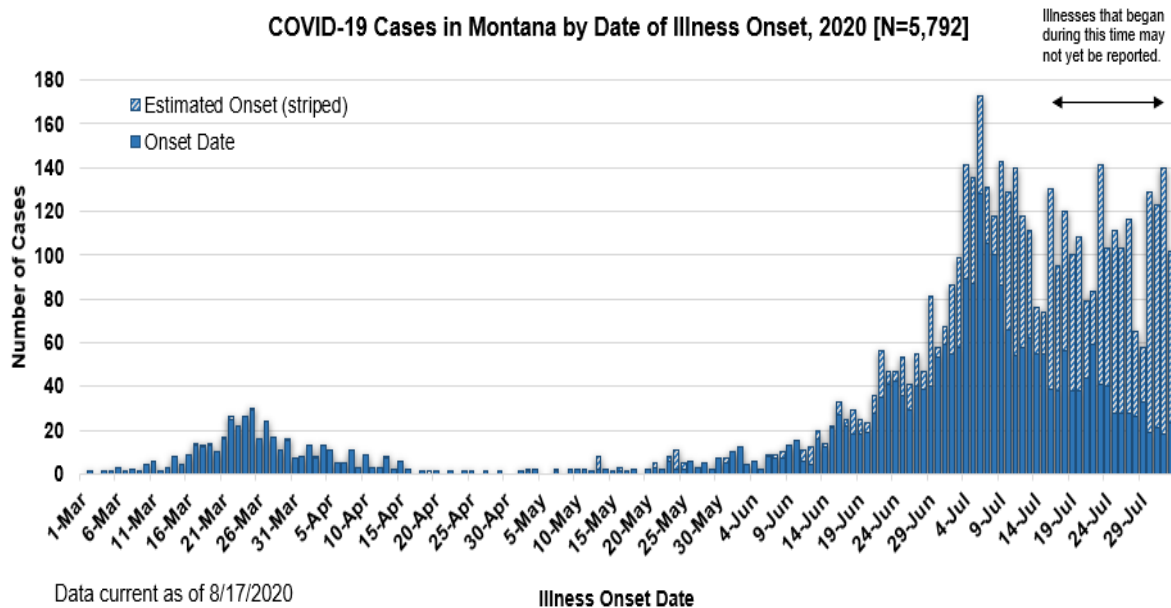
[Archive of COVID-19 Montana Analyses](#)



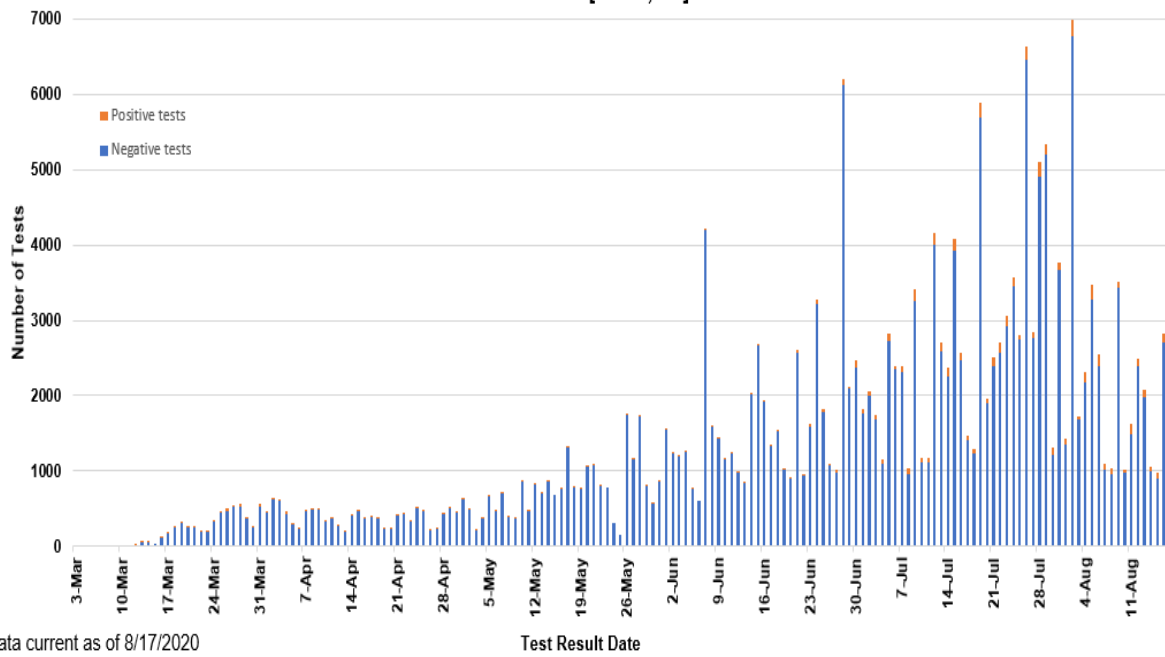
### Demographic Information for Confirmed Cases

COVID-19 Cases in Montana	
Total Number of Cases	5792
- Number of Deaths	82

*\* Tables and charts are updated by 10 am every morning.*



**SARS-Cov-2 PCR Testing at Montana Public Health Laboratory and Reference Laboratories,  
Montana 2020 [n=204,725]**



County of Residence	Number of Cases	Number of Deaths	Community Transmission*
Beaverhead	68		Yes
Big Horn	529	14	Yes
Blaine	14		
Broadwater	14		
Carbon	77		
Cascade	183	4	Yes
Choteau	10		
Custer	61	2	
Daniels	3		
Dawson	30		
Deer Lodge	30		
Fallon	2		
Fergus	23		
Flathead	407	3	Yes
Gallatin	992	3	Yes
Garfield	12		
Glacier	88	1	Yes
Golden Valley	3		
Granite	18		
Hill	48	2	
Jefferson	31		
Judith Basin	3		

County of Residence	Number of Cases	Number of Deaths	Community Transmission*
Lake	187	1	
Lewis and Clark	178	2	Yes
Liberty	1		
Lincoln	78	2	
Madison	86	1	Yes
McCone	5		
Meagher	4		
Mineral	2		
Missoula	385	2	Yes
Musselshell	4		
Park	63		
Phillips	93		
Pondera	11		
Powder River	1		
Powell	2		
Prairie	1		
Ravalli	85	2	Yes
Richland	50	2	
Roosevelt	35		
Rosebud	78	1	Yes
Sanders	18		
Sheridan	5		
Silver Bow	105		Yes
Stillwater	31	1	
Sweet Grass	6	1	
Teton	15		
Toole	46	6	
Treasure	2		
Valley	30		
Wheatland	3		
Wibaux	3		
Yellowstone	1533	32	Yes
Total	5792	82	

\* Community transmission - a community has identified cases who are unable to be linked with other known cases or travel. This status has been determined after consultation between state and local health departments.

Hospitalization Status	Number of Cases (percent of total)
Ever hospitalized	330 (6%)

<b>Hospitalization Status</b>	<b>Number of Cases (percent of total)</b>
Not Hospitalized	5458 (94%)
Under Investigation	4 (<1%)
Total	5792

<b>Age Group</b>	<b>Number of Cases (percent of total)</b>
0-9 years	234 (4%)
10-19 years	510 (9%)
20-29 years	1479 (25%)
30-39 years	977 (17%)
40-49 years	725 (12.5%)
50-59 years	730 (12.5%)
60-69 years	611 (10%)
70-79 years	328 (6%)
80-89 years	154 (3%)
90-99 years	44 (<1%)
Total	5792

<b>Sex</b>	<b>Number of Cases (percent of total)</b>
Female	2908 (50%)
Male	2884 (50%)
Total	5792

<b>Race and Ethnicity</b>	<b>Number of Cases (percent of total)</b>
White	3231 (56%)
American Indian, Alaska Native, Native Hawaiian, and Pacific Islander	807 (14%)
Asian	20 (<1%)
Black or African American	35 (<1%)
Other Race	54 (1%)

<b>Race and Ethnicity</b>	<b>Number of Cases (percent of total)</b>
Undetermined/Under investigation	1645 (28%)
Total	5792
<b>Among those with ethnicity specified:</b>	
Hispanic/Latino	236 (6%)
Not Hispanic/Latino	3773 (94%)
Total	4009

<b>Current Status of Cases</b>	<b>Number of Cases (percent of total)</b>
Hospitalized	94 (1.5%)
Deceased	82 (1.4%)
Recovering	1454 (25%)
Recovered and released from isolation	4162 (72%)
Total number of cases	5792

**Location (at time of testing) of individuals diagnosed but not residing or counted in Montana:**

<b>County</b>	<b>Number of Cases (percent of total)</b>
Beaverhead	3 (1%)
Big Horn	1 (<1%)
Carbon	3 (1%)
Cascade	20 (9%)
Custer	4 (2%)
Dawson	1 (<1%)
Deer Lodge	1 (<1%)
Fallon	1 (<1%)
Fergus	2 (1%)
Flathead	46 (21%)
Gallatin	43 (20%)
Glacier	1 (<1%)
Granite	1 (<1%)
Lake	10 (5%)
Lewis and Clark	5 (2%)
Lincoln	3 (1%)
Madison	23 (11%)
Meagher	1 (<1%)
Missoula	7 (3%)

County	Number of Cases (percent of total)
Park	8 (4%)
Powell	1 (<1%)
Ravalli	8 (4%)
Silver Bow	4 (2%)
Stillwater	1 (<1%)
Sweet Grass	1 (<1%)
Toole	2 (1%)
Yellowstone	19 (9%)
Total	222

Cases reported in the tables above include **13** residents of other states who were tested, isolated and/or hospitalized in Montana during the early phases of the pandemic. As COVID-19 is now widespread across the United States, data no longer include out-of-state residents who test positive in Montana in order to align with Council of State and Territorial Epidemiologists guidelines that classify cases by the individual's usual state of residence. This is standard practice for all communicable diseases to ensure accurate case reporting for Montana and the US. Additional individuals were diagnosed in Montana but are not included due to residency and/or the transient nature of their visit to the state: data for these individuals are reflected in the table immediately above.



## Communicable Disease Epidemiology

### Staff Listing



To submit a question or comment to the Communicable Disease Epidemiology Program, please click on the suggestion box to access our online form.

 [Diseases A-Z](#)

 [Disease Reporting](#)

 [Data and Reports](#)

 [Contact Us](#)

Other Program Areas

 [Tuberculosis \(TB\)](#)

 [Healthcare Associated Infections \(HAI\)](#)

 [Sexually Transmitted Diseases \(HIV/STD\)](#)



*The DPHHS CDEpi Section mission is to create, maintain, support, and strengthen routine surveillance and detection systems and epidemiological investigation processes, as well as to expand these systems and processes in response to incidents of public health significance.*

**Nondiscrimination Notice/Policy**

**Notice of Use of Protected Health Information**

**Disclaimer**

**Contact Webmaster**

**Language Assistance Available**

**Español | Deutsch | 繁體中文 | 日本語 | Tagalog | Français | Русский | 한국어 | العربية | ไทย | Norsk |  
Tiếng Việt | український | Pennsilfaanisch Deitsch | Italiano**