

## Coronavirus Disease 2019 (COVID-19)

### [Analysis of COVID-19 Cases in Montana as of 8/7/2020](#)

#### [Archive of COVID-19 Montana Analyses](#)



#### Demographic Information for Confirmed Cases

##### COVID-19 Cases in Montana

Total Number of Cases

6785

- Number of Deaths

98

*\* Tables and charts are updated by 10 am every morning.*



[Click Here: Montana COVID-19 Case Map](#)

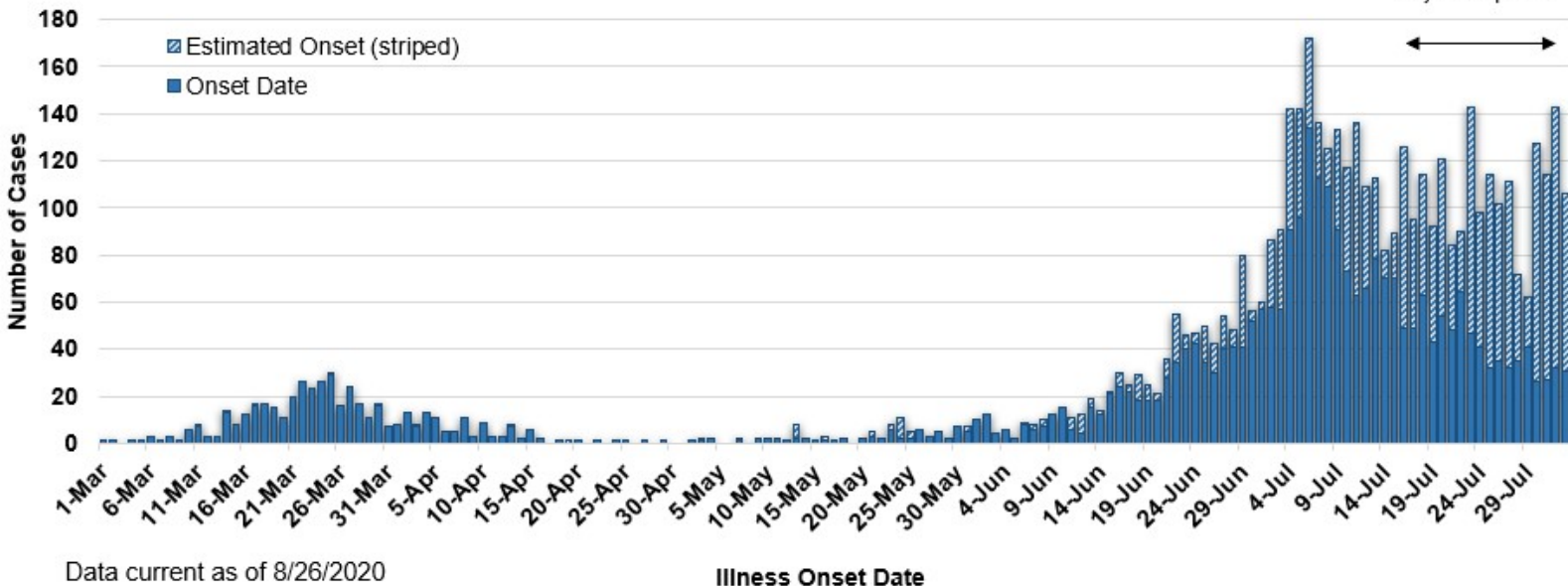
County of Residence	Number of Cases	Number of Deaths	Community Transmission*
Beaverhead	69		Yes
Big Horn	609	15	Yes
Blaine	15		
Broadwater	16		
Carbon	84		
Cascade	258	5	Yes
Choteau	10		
Custer	65	2	
Daniels	3		

County of Residence	Number of Cases	Number of Deaths	Community Transmission*
Dawson	32		
Deer Lodge	33		
Fallon	2		
Fergus	26		
Flathead	539	4	Yes
Gallatin	1029	3	Yes
Garfield	12		
Glacier	128	1	Yes
Golden Valley	3		
Granite	18		
Hill	72	2	
Jefferson	36		
Judith Basin	4		
Lake	192	1	
Lewis and Clark	191	2	Yes
Liberty	5		
Lincoln	85	2	
Madison	91	1	Yes
McCone	8		
Meagher	4		
Mineral	2		
Missoula	417	3	Yes
Musselshell	7		
Park	63		
Phillips	110		
Pondera	15		
Powder River	2		
Powell	10		
Prairie	1		
Ravalli	99	2	Yes
Richland	55	2	
Roosevelt	34	1	
Rosebud	166	2	Yes
Sanders	31		
Sheridan	5		
Silver Bow	110		Yes
Stillwater	34	2	
Sweet Grass	9	1	
Teton	17		
Toole	47	6	
Treasure	3		
Valley	37		
Wheatland	3		
Wibaux	5		
Yellowstone	1864	41	Yes
Total	6785	98	

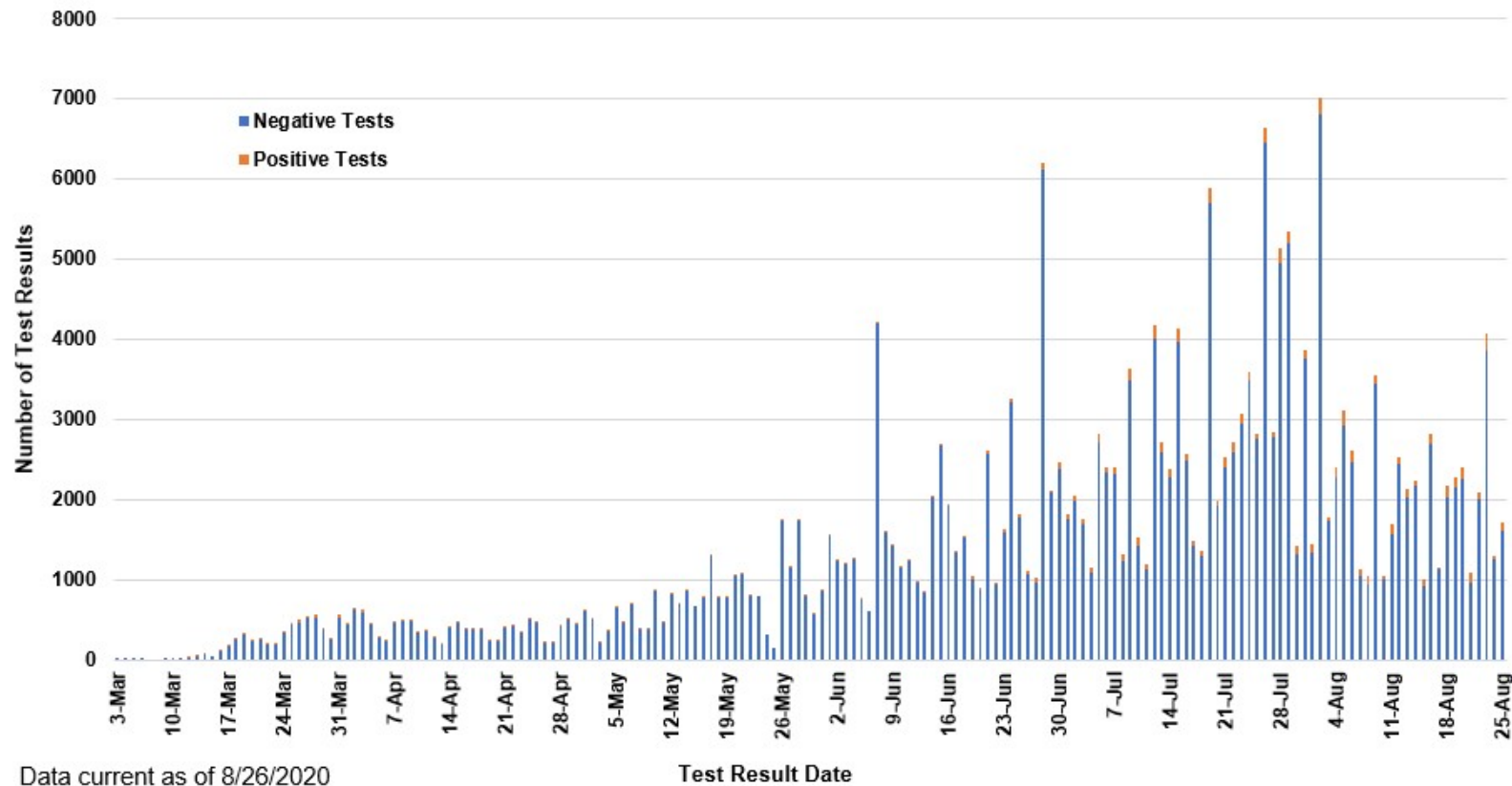
\* Community transmission - a community has identified cases who are unable to be linked with other known cases or travel. This status has been determined after consultation between state and local health departments.

### COVID-19 Cases in Montana by Date of Illness Onset, 2020 [N=6,785]

Illnesses that began during this time may not yet be reported.



### SARS-Cov-2 PCR Testing at Montana Public Health Laboratory and Reference Laboratories, Montana 2020 [n=238,260]



Hospitalization Status  
 Ever hospitalized  
 Not Hospitalized  
 Total

Number of Cases (percent of total)  
 402 (6%)  
 6383 (94%)  
 6785

Age Group  
 0-9 years  
 10-19 years

Number of Cases (percent of total)  
 286 (4.2%)  
 623 (9.2%)

Age Group	Number of Cases (percent of total)
20-29 years	1658 (24.4%)
30-39 years	1173 (17.3%)
40-49 years	877 (12.9%)
50-59 years	850 (12.5%)
60-69 years	712 (10.5%)
70-79 years	389 (5.7%)
80-89 years	169 (2.5%)
90+ years	48 (<1%)
Total	6785
Sex	Number of Cases (percent of total)
Female	3400 (50.1%)
Male	3385 (49.9%)
Total	6785

Race and Ethnicity	Number of Cases (percent of total)
White	3804 (56.1%)
American Indian, Alaska Native, Native Hawaiian, and Pacific Islander	1074 (15.8%)
Asian	26 (<1%)
Black or African American	41 (<1%)
Other Race	71 (1%)
Undetermined/Under investigation	1769 (26%)
Total	6785
<b>Among those with ethnicity specified:</b>	
Hispanic/Latino	272 (5.6%)
Not Hispanic/Latino	4599 (94.4%)
Total	4871

Current Status of Cases	Number of Cases (percent of total)
Hospitalized	125 (1.8%)
Deceased	98 (1.4%)
Recovering	1579 (23.3%)
Recovered and released from isolation	4983 (73.4%)
Total number of cases	6785

**Location (at time of testing) of individuals diagnosed but not residing or counted in Montana:**

County	Number of Cases (percent of total)
Beaverhead	3 (1%)
Big Horn	1 (<1%)
Carbon	3 (1%)
Cascade	20 (9%)
Custer	4 (2%)
Dawson	2 (1%)
Deer Lodge	1 (<1%)
Fallon	1 (<1%)
Fergus	2 (1%)
Flathead	46 (20%)
Gallatin	43 (19%)
Glacier	1 (<1%)
Granite	1 (<1%)
Lake	10 (4%)
Lewis and Clark	5 (2%)
Lincoln	3 (1%)
Madison	25 (11%)
Meagher	1 (<1%)
Missoula	8 (4%)
Park	8 (4%)

County	Number of Cases (percent of total)
Powell	1 (<1%)
Ravalli	8 (4%)
Silver Bow	5 (2%)
Stillwater	2 (1%)
Sweet Grass	3 (1%)
Toole	2 (1%)
Yellowstone	20 (9%)
Total	229

*Cases reported in the tables above include 13 residents of other states who were tested, isolated and/or hospitalized in Montana during the early phases of the pandemic. As COVID-19 is now widespread across the United States, data no longer include out-of-state residents who test positive in Montana in order to align with Council of State and Territorial Epidemiologists guidelines that classify cases by the individual's usual state of residence. This is standard practice for all communicable diseases to ensure accurate case reporting for Montana and the US. Additional individuals were diagnosed in Montana but are not included due to residency and/or the transient nature of their visit to the state: data for these individuals are reflected in the table immediately above.*