

## Sheila Hogan, Director

Children/Families

Disabilities

Seniors

Health

[Home](#) » [Public Health & Safety](#) » [Communicable Disease Epidemiology](#) » [Diseases A to Z](#) » [Coronavirus](#) » [Demographics](#)

## Coronavirus Disease 2019 (COVID-19)

[Analysis of COVID-19 Cases in Montana as of 8/21/2020](#)

[Archive of COVID-19 Montana Analyses](#)



### Demographic Information for Confirmed Cases

COVID-19 Cases in Montana	
Total Number of Cases	7691
- Number of Deaths	109

*\* Tables and charts are updated by 10 am every morning.*

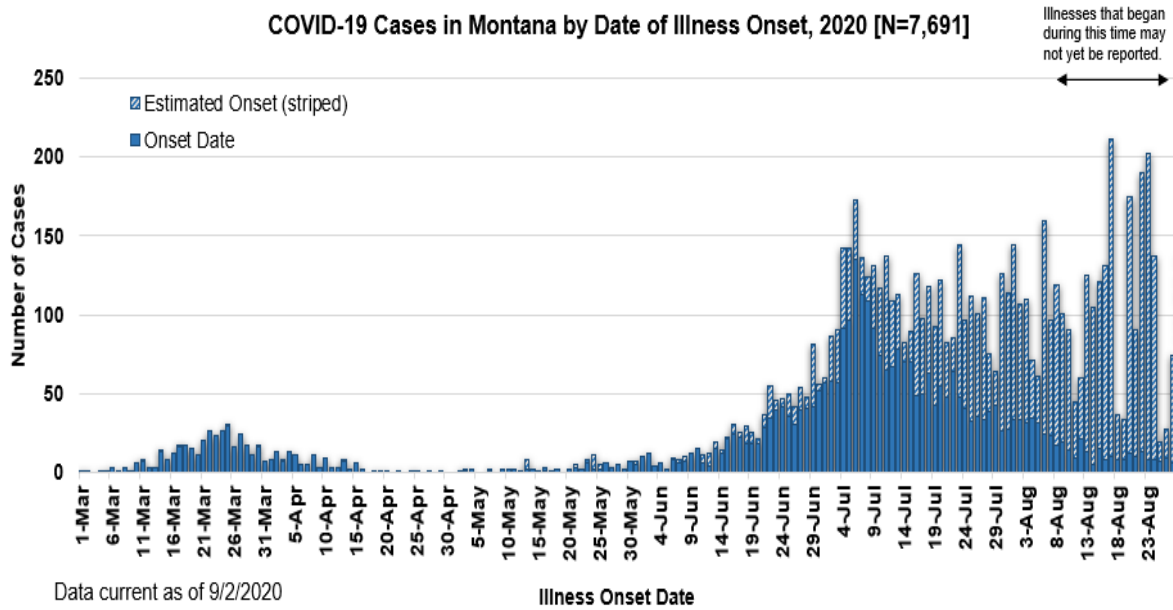
County of Residence	Number of Cases	Number of Deaths	Community Transmission*
Beaverhead	71	1	Yes
Big Horn	682	16	Yes
Blaine	15		
Broadwater	16		
Carbon	89		
Cascade	299	5	Yes
Chouteau	11		
Custer	66	2	
Daniels	3		
Dawson	47		
Deer Lodge	33		
Fallon	2		

<b>County of Residence</b>	<b>Number of Cases</b>	<b>Number of Deaths</b>	<b>Community Transmission*</b>
Fergus	32		
Flathead	626	7	Yes
Gallatin	1086	3	Yes
Garfield	14		
Glacier	138	1	Yes
Golden Valley	3		
Granite	20		
Hill	91	2	
Jefferson	39		
Judith Basin	6		
Lake	204	1	
Lewis and Clark	199	3	Yes
Liberty	7		
Lincoln	89	2	
Madison	93	1	Yes
McCone	14		
Meagher	4		
Mineral	2		
Missoula	436	3	Yes
Musselshell	15		
Park	65		
Phillips	114		
Pondera	16		
Powder River	2		
Powell	10		
Prairie	1		
Ravalli	110	2	Yes
Richland	60	2	
Roosevelt	44	1	
Rosebud	297	5	Yes
Sanders	39		
Sheridan	5		
Silver Bow	115		Yes
Stillwater	38	2	
Sweet Grass	28	1	
Teton	18		
Toole	51	6	
Treasure	3		

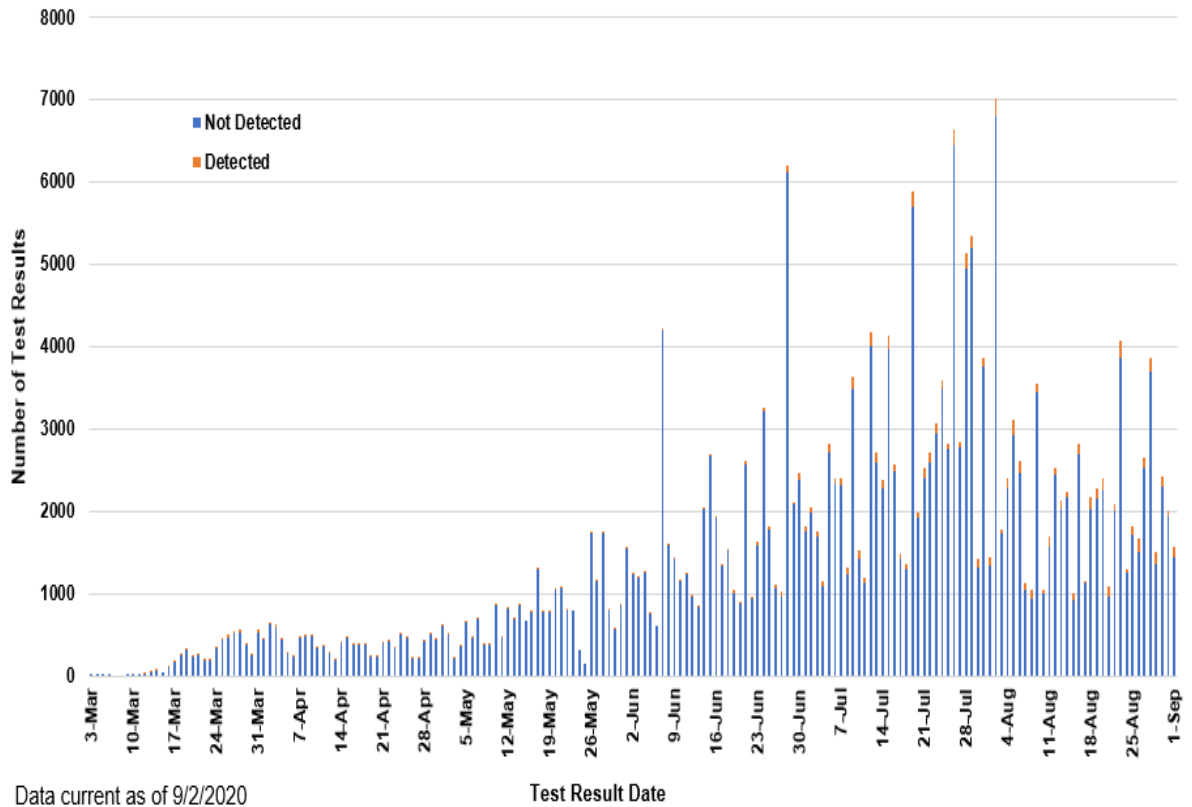
County of Residence	Number of Cases	Number of Deaths	Community Transmission*
---------------------	-----------------	------------------	-------------------------

Valley	46		
Wheatland	3		
Wibaux	8		
Yellowstone	2166	43	Yes
Total	7691	109	

\* Community transmission - a community has identified cases who are unable to be linked with other known cases or travel. This status has been determined after consultation between state and local health departments.



**SARS-Cov-2 PCR Testing at Montana Public Health Laboratory and Reference Laboratories,  
Montana 2020 [n=253,873]**



Hospitalization Status	Number of Cases (percent of total)
Ever hospitalized	461 (6%)
Not Hospitalized	7230 (94%)
Total	7691

Age Group	Number of Cases (percent of total)
0-9 years	329 (4%)
10-19 years	725 (9%)
20-29 years	1817 (24%)
30-39 years	1318 (17%)
40-49 years	1021 (13%)
50-59 years	973 (13%)
60-69 years	803 (10%)
70-79 years	457 (6%)

Age Group	Number of Cases (percent of total)
80-89 years	197 (3%)
90-99 years	50 (<1%)
100+	1 (<1%)
Total	7691

Sex	Number of Cases (percent of total)
Female	3853 (50%)
Male	3838 (50%)
Total	7691

Race and Ethnicity	Number of Cases (percent of total)
White	4017 (52%)
American Indian, Alaska Native, Native Hawaiian, and Pacific Islander	1235 (16%)
Asian	27 (<1%)
Black or African American	43 (<1%)
Other Race	75 (1%)
Undetermined/Under investigation	2294 (30%)
Total	7691
<b>Among those with ethnicity specified:</b>	
Hispanic/Latino	284 (4%)
Not Hispanic/Latino	4961 (66%)
Undetermined/Under investigation	2446 (30%)
Total	7691

Current Status of Cases	Number of Cases (percent of total)
Hospitalized	150 (2%)
Deceased	109 (1%)
Recovering	1848 (24%)
Recovered and released from isolation	5584 (73%)
Total number of cases	7691

**Summary of Long Term Care Facility (LTCF) and Assisted Living Facility (ALF)**

**COVID-19 cases and deaths:**

	Count (percent of total)
Number of LTCF/ALF facilities in Montana	291
Number of LTCF/ALF with positive cases	41 (14.1%)
All COVID-19 cases reported in Montana	7063
Number of COVID-19 cases in LTCF/ALF	311 (4.4%)
All COVID-19 related deaths reported in Montana	100
Number of COVID-19 related deaths in LTCF/ALF	33 (33%)

*Long term care residents are at high risk for infection, serious illness, and death from COVID-19. Data in the above table will be updated weekly.*

**Location (at time of testing) of individuals diagnosed but not residing or counted in Montana:**

County	Number of Cases (percent of total)
Beaverhead	3 (1%)
Big Horn	1 (<1%)
Carbon	3 (1%)
Cascade	20 (9%)
Custer	4 (2%)
Dawson	2 (1%)
Deer Lodge	1 (<1%)
Fallon	1 (<1%)
Fergus	2 (1%)
Flathead	46 (20%)
Gallatin	45 (19%)
Glacier	1 (<1%)
Granite	1 (<1%)
Lake	10 (4%)
Lewis and Clark	5 (2%)
Lincoln	3 (1%)
Madison	25 (11%)
Meagher	1 (<1%)
Missoula	12 (5%)
Park	8 (3%)
Powell	1 (<1%)
Ravalli	8 (3%)
Silver Bow	5 (2%)
Stillwater	2 (1%)
Sweet Grass	3 (1%)
Toole	2 (1%)

County	Number of Cases (percent of total)
Yellowstone	20 (9%)
Total	235

Cases reported in the tables above include **13** residents of other states who were tested, isolated and/or hospitalized in Montana during the early phases of the pandemic. As COVID-19 is now widespread across the United States, data no longer include out-of-state residents who test positive in Montana in order to align with Council of State and Territorial Epidemiologists guidelines that classify cases by the individual's usual state of residence. This is standard practice for all communicable diseases to ensure accurate case reporting for Montana and the US. Additional individuals were diagnosed in Montana but are not included due to residency and/or the transient nature of their visit to the state: data for these individuals are reflected in the table immediately above.



## Communicable Disease Epidemiology Staff Listing



To submit a question or comment to the Communicable Disease Epidemiology Program, please click on the suggestion box to access our online form.

 [Diseases A-Z](#)

 [Disease Reporting](#)

 [Data and Reports](#)

 [Contact Us](#)

Other Program Areas

 [Tuberculosis \(TB\)](#)

 [Healthcare Associated Infections \(HAI\)](#)

 [Sexually Transmitted Diseases \(HIV/STD\)](#)

 [Antimicrobial Resistance](#)

 [Follow DPHHS](#)

*The DPHHS CDEpi Section mission is to create, maintain, support, and strengthen routine surveillance and detection systems and epidemiological investigation processes, as well as to expand these systems and processes in response to incidents of public health significance.*

Nondiscrimination Notice/Policy

Notice of Use of Protected Health Information

**Disclaimer**

**Contact Webmaster**

**Language Assistance Available**

**Español | Deutsch | 繁體中文 | 日本語 | Tagalog | Français | Русский | 한국어 | العربية | ไทย | Norsk |  
Tiếng Việt | український | Pennsilfaanisch Deitsch | Italiano**