

## Sheila Hogan, Director

Children/Families

Disabilities

Seniors

Health

[Home](#) » [Public Health & Safety](#) » [Communicable Disease Epidemiology](#) » [Diseases A to Z](#) » [Coronavirus](#) » [Demographics](#)

## Coronavirus Disease 2019 (COVID-19)

[Analysis of COVID-19 Cases in Montana as of 9/4/2020](#)

[Archive of COVID-19 Montana Analyses](#)



### Demographic Information for Confirmed Cases

COVID-19 Cases in Montana	
Total Number of Cases	9021
- Number of Deaths	135

*\* Tables and charts are updated by 10 am every morning.*

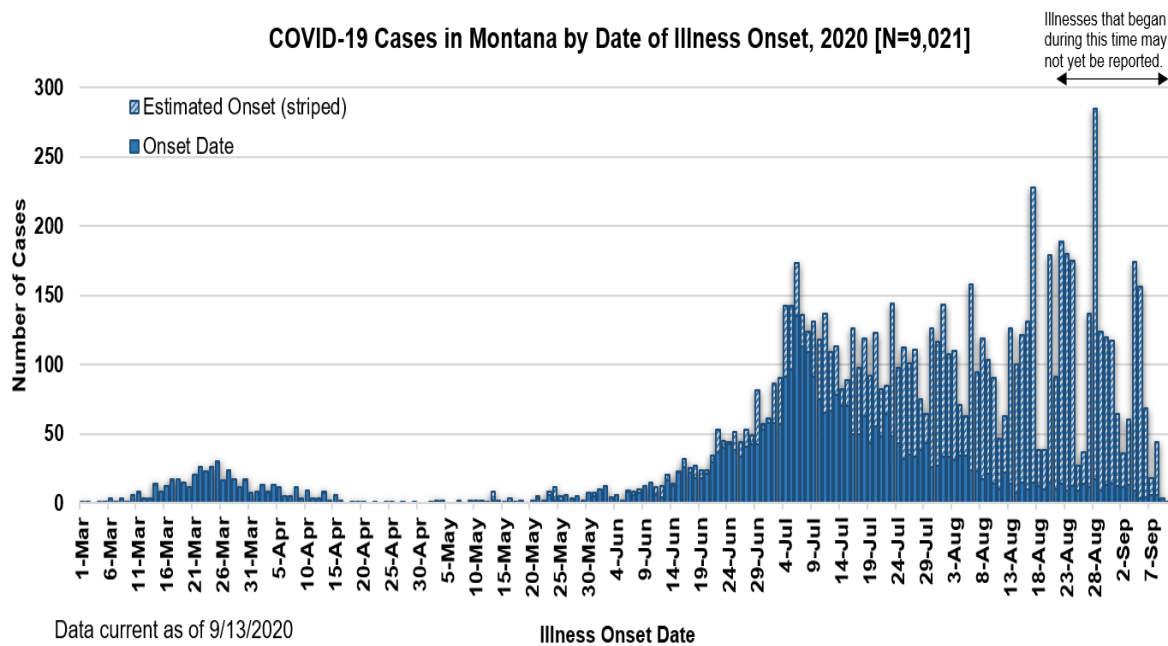
County of Residence	Number of Cases	Number of Deaths	Community Transmission*
Beaverhead	74	1	Yes
Big Horn	773	19	Yes
Blaine	15		
Broadwater	17		
Carbon	100		
Cascade	444	5	Yes
Chouteau	15		
Custer	79	2	
Daniels	3		
Dawson	59	1	
Deer Lodge	87		
Fallon	4		

<b>County of Residence</b>	<b>Number of Cases</b>	<b>Number of Deaths</b>	<b>Community Transmission*</b>
Fergus	53	1	
Flathead	730	13	Yes
Gallatin	1153	3	Yes
Garfield	16		
Glacier	166	1	Yes
Golden Valley	3		
Granite	22		
Hill	111	3	
Jefferson	45		
Judith Basin	6		
Lake	241	1	
Lewis and Clark	209	3	Yes
Liberty	15		
Lincoln	103	3	
Madison	96	1	Yes
McCone	15		
Meagher	9	1	
Mineral	2		
Missoula	473	3	Yes
Musselshell	23	1	
Park	76		
Phillips	114		
Pondera	17		
Powder River	2		
Powell	10		
Prairie	1		
Ravalli	115	2	Yes
Richland	70	2	
Roosevelt	86	1	
Rosebud	434	7	Yes
Sanders	42	1	
Sheridan	6		
Silver Bow	160		Yes
Stillwater	49	2	
Sweet Grass	36	1	
Teton	19		
Toole	64	6	
Treasure	3		

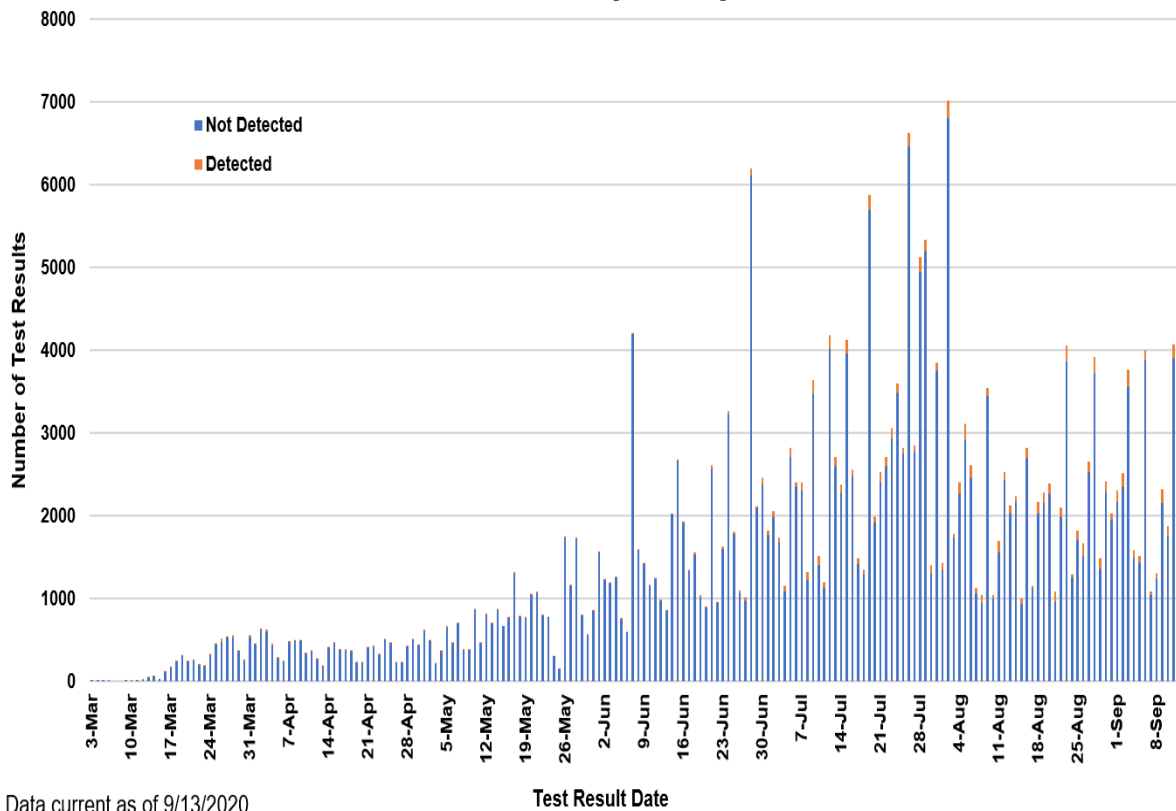
County of Residence	Number of Cases	Number of Deaths	Community Transmission*
---------------------	-----------------	------------------	-------------------------

Valley	51		
Wheatland	6		
Wibaux	8		
Yellowstone	2491	51	Yes
Total	9021	135	

\* Community transmission - a community has identified cases who are unable to be linked with other known cases or travel. This status has been determined after consultation between state and local health departments.



**SARS-Cov-2 PCR Testing at Montana Public Health Laboratory and Reference Laboratories,  
Montana 2020 [n=280,124]**



View your county's test positivity rate at the [Center for Medicare and Medicaid Services' \(CMS\) webpage.](#)

Hospitalization Status	Number of Cases (percent of total)
Ever hospitalized	525 (6%)
Not Hospitalized	8496 (94%)
Total	9021

Age Group	Number of Cases (percent of total)
0-9 years	372 (4%)
10-19 years	888 (10%)
20-29 years	2049 (23%)
30-39 years	1542 (17%)
40-49 years	1210 (13%)
50-59 years	1139 (13%)
60-69 years	949 (10%)

Age Group	Number of Cases (percent of total)
70-79 years	556 (6%)
80-89 years	251 (3%)
90-99 years	62 (<1%)
100+	3 (<1%)
Total	9021

Sex	Number of Cases (percent of total)
Female	4508 (50%)
Male	4513 (50%)
Total	9021

Race and Ethnicity	Number of Cases (percent of total)
White	4310 (50%)
American Indian, Alaska Native, Native Hawaiian, and Pacific Islander	1414 (16%)
Asian	29 (<1%)
Black or African American	46 (<1%)
Other Race	81 (1%)
Undetermined/Under investigation	3141 (33%)
Total	9021
<b>Among those with ethnicity specified:</b>	
Hispanic/Latino	304 (3%)
Not Hispanic/Latino	5395 (61%)
Undetermined/Under investigation	3322 (36%)
Total	9021

Current Status of Cases	Number of Cases (percent of total)
Hospitalized	145 (1.6%)
Deceased	135 (1.5%)
Recovering	1911 (20%)
Recovered and released from isolation	6830 (77%)
Total number of cases	9021

**Summary of Long Term Care Facility (LTCF) and Assisted Living Facility (ALF) COVID-19 cases and deaths:**

	LTCF	ALF
Number of facilities in Montana by type	73	211
Number of facilities that have reported COVID-19 cases* (%)	28 (38.4)	31 (14.7)
Number of facilities with ongoing COVID-19 cases** (%)	12 (16.4)	12 (5.7)
Number of COVID-19 cases ever associated with a facility (%)	168 (1.9)	219 (2.5)
Number of COVID-19 deaths ever associated with a facility (%)	8 (6.5)	30 (24.4)

*Long term care residents are at high risk for infection, serious illness, and death from COVID-19. Data in the above table will be updated weekly. \* Cases in a staff member or resident. \*\*Ongoing cases include any identified within the last 7 days.*

**Location (at time of testing) of individuals diagnosed but not residing or counted in Montana:**

County	Number of Cases (percent of total)
Beaverhead	3 (1%)
Big Horn	1 (<1%)
Carbon	3 (1%)
Cascade	20 (9%)
Custer	4 (2%)
Dawson	2 (1%)
Deer Lodge	1 (<1%)
Fallon	1 (<1%)
Fergus	2 (1%)
Flathead	46 (19%)
Gallatin	47 (20%)
Glacier	1 (<1%)
Granite	1 (<1%)
Lake	10 (4%)
Lewis and Clark	5 (2%)
Lincoln	3 (1%)
Madison	25 (11%)
Meagher	1 (<1%)
Missoula	13 (5%)
Park	8 (3%)
Powell	1 (<1%)
Ravalli	8 (3%)
Silver Bow	5 (2%)
Stillwater	2 (1%)

County	Number of Cases (percent of total)
Sweet Grass	3 (1%)
Toole	2 (1%)
Yellowstone	20 (9%)
Total	238

Cases reported in the tables above include **13** residents of other states who were tested, isolated and/or hospitalized in Montana during the early phases of the pandemic. As COVID-19 is now widespread across the United States, data no longer include out-of-state residents who test positive in Montana in order to align with Council of State and Territorial Epidemiologists guidelines that classify cases by the individual's usual state of residence. This is standard practice for all communicable diseases to ensure accurate case reporting for Montana and the US. Additional individuals were diagnosed in Montana but are not included due to residency and/or the transient nature of their visit to the state: data for these individuals are reflected in the table immediately above.



## Communicable Disease Epidemiology

### Staff Listing



To submit a question or comment to the Communicable Disease Epidemiology Program, please click on the suggestion box to access our online form.

 [Diseases A-Z](#)

 [Disease Reporting](#)

 [Data and Reports](#)

 [Contact Us](#)

Other Program Areas

 [Tuberculosis \(TB\)](#)

 [Healthcare Associated Infections \(HAI\)](#)

 [Sexually Transmitted Diseases \(HIV/STD\)](#)

 [Antimicrobial Resistance](#)

 [Follow DPHHS](#)

*The DPHHS CDEpi Section mission is to create, maintain, support, and strengthen routine surveillance and detection systems and epidemiological investigation processes, as well as to expand these systems and processes in response to incidents of public health significance.*

---

[Nondiscrimination Notice/Policy](#)

[Notice of Use of Protected Health Information](#)

[Disclaimer](#)

[Contact Webmaster](#)

[Language Assistance Available](#)

[Español](#) | [Deutsch](#) | [繁體中文](#) | [日本語](#) | [Tagalog](#) | [Français](#) | [Русский](#) | [한국어](#) | [العربية](#) | [ไทย](#) | [Norsk](#) | [Tiếng Việt](#) | [український](#) | [Pennsilfaanisch Deitsch](#) | [Italiano](#)