

## Coronavirus Disease 2019 (COVID-19)

### [Analysis of COVID-19 Cases in Montana as of 9/4/2020](#)

#### [Archive of COVID-19 Montana Analyses](#)



#### Demographic Information for Confirmed Cases

##### COVID-19 Cases in Montana

Total Number of Cases 9107

- Number of Deaths 138

*\* Tables and charts are updated by 10 am every morning.*



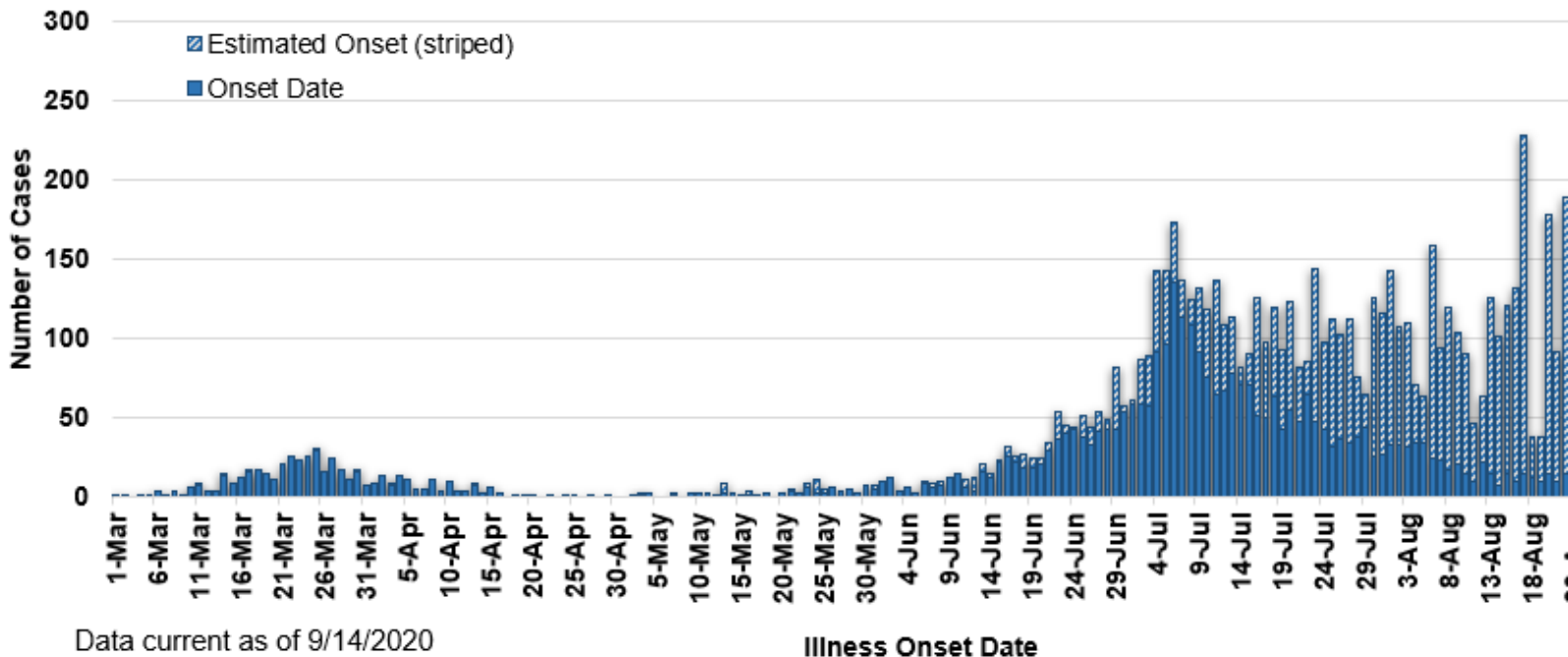
[Click Here: Montana COVID-19 Case Map](#)

County of Residence	Number of Cases	Number of Deaths	Community Transmission*
Beaverhead	74	1	Yes
Big Horn	782	21	Yes
Blaine	15		
Broadwater	17		
Carbon	100		
Cascade	447	5	Yes
Chouteau	15		
Custer	79	2	
Daniels	3		

County of Residence	Number of Cases	Number of Deaths	Community Transmission*
Dawson	60	1	
Deer Lodge	87		
Fallon	4		
Fergus	53	1	
Flathead	731	13	Yes
Gallatin	1153	3	Yes
Garfield	16		
Glacier	166	1	Yes
Golden Valley	3		
Granite	22		
Hill	113	3	
Jefferson	46		
Judith Basin	6		
Lake	241	1	
Lewis and Clark	209	3	Yes
Liberty	15		
Lincoln	103	3	
Madison	97	1	Yes
McCone	15		
Meagher	10	1	
Mineral	2		
Missoula	473	3	Yes
Musselshell	27	1	
Park	80		
Phillips	116		
Pondera	17		
Powder River	2		
Powell	10		
Prairie	1		
Ravalli	116	2	Yes
Richland	70	2	
Roosevelt	86	1	
Rosebud	439	7	Yes
Sanders	42	1	
Sheridan	6		
Silver Bow	182		Yes
Stillwater	49	2	
Sweet Grass	37	1	
Teton	20		
Toole	64	6	
Treasure	3		
Valley	51		
Wheatland	6		
Wibaux	8		
Yellowstone	2518	52	Yes
Total	9107	138	

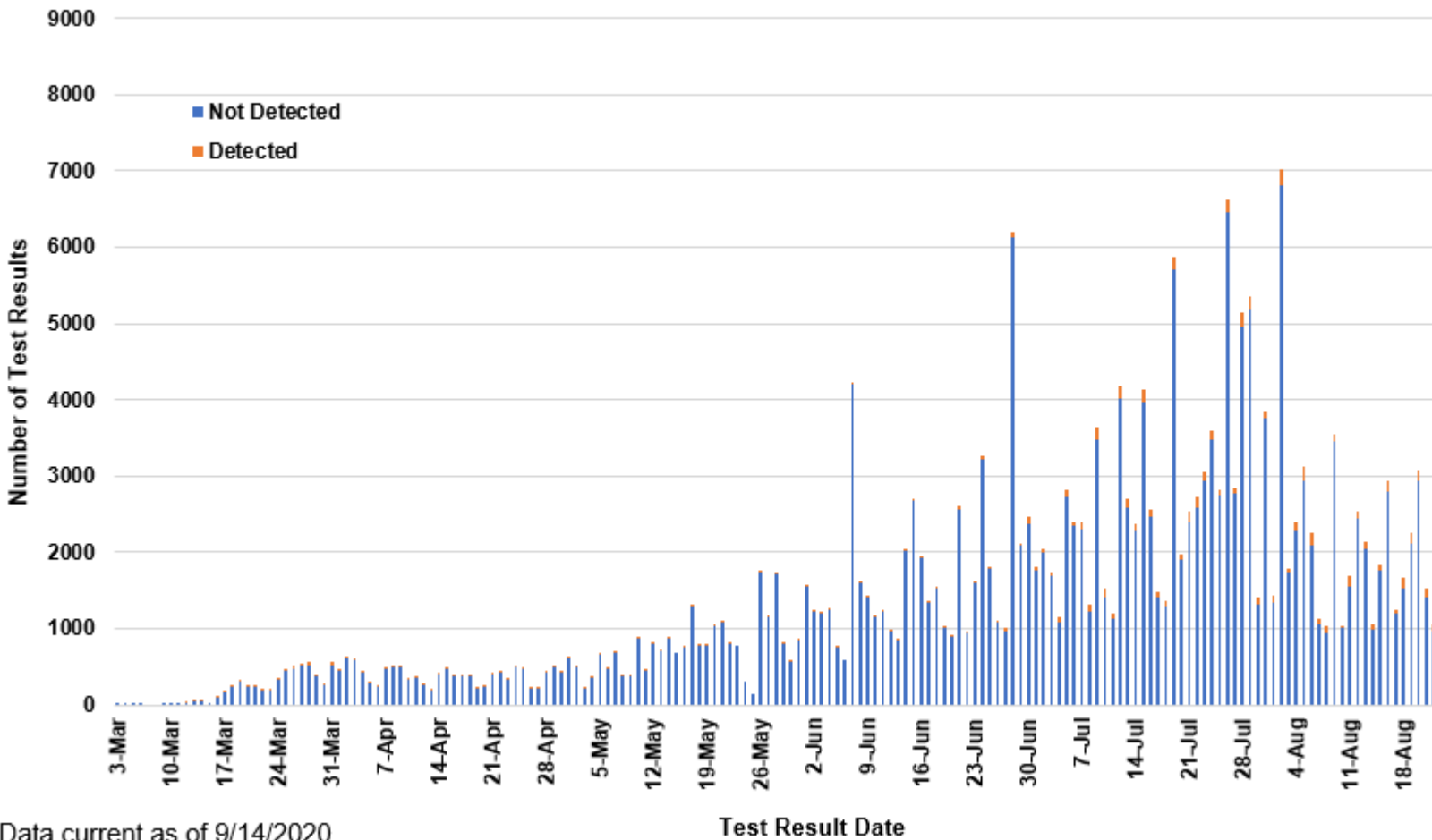
\* Community transmission - a community has identified cases who are unable to be linked with other known cases or travel. This status has been determined after consultation between state and local health departments.

### COVID-19 Cases in Montana by Date of Illness Onset, 2020 [N=9,107]



Data current as of 9/14/2020

### SARS-Cov-2 PCR Testing at Montana Public Health Laboratory and Reference Laboratories, Montana 2020 [n=285,870]



Data current as of 9/14/2020

View your county's test positivity rate at the [Center for Medicare and Medicaid Services' \(CMS\) webpage](#).

Hospitalization Status	Number of Cases (percent of total)
Ever hospitalized	531 (6%)
Not Hospitalized	8576 (94%)
Total	9107

Age Group	Number of Cases (percent of total)
0-9 years	372 (4%)
10-19 years	904 (10%)
20-29 years	2065 (23%)
30-39 years	1556 (17%)
40-49 years	1221 (13%)
50-59 years	1149 (13%)
60-69 years	958 (10%)
70-79 years	564 (6%)
80-89 years	253 (3%)
90-99 years	62 (<1%)
100+	3 (<1%)
Total	9107
Sex	Number of Cases (percent of total)
Female	4546 (50%)
Male	4561 (50%)
Total	9107

Race and Ethnicity	Number of Cases (percent of total)
White	4330 (50%)
American Indian, Alaska Native, Native Hawaiian, and Pacific Islander	1419 (16%)
Asian	29 (<1%)
Black or African American	46 (<1%)
Other Race	81 (1%)
Undetermined/Under investigation	3202 (33%)
Total	9107
<b>Among those with ethnicity specified:</b>	
Hispanic/Latino	304 (3%)
Not Hispanic/Latino	5411 (61%)
Undetermined/Under investigation	3392 (36%)
Total	9107

Current Status of Cases	Number of Cases (percent of total)
Hospitalized	144 (1.6%)
Deceased	138 (1.5%)
Recovering	1983 (20%)
Recovered and released from isolation	6842 (77%)
Total number of cases	9107

**Summary of Long Term Care Facility (LTCF) and Assisted Living Facility (ALF) COVID-19 cases and deaths:**

	LTCF	ALF
Number of facilities in Montana by type	73	211
Number of facilities that have reported COVID-19 cases* (%)	28 (38.4)	31 (14.7)
Number of facilities with ongoing COVID-19 cases** (%)	12 (16.4)	12 (5.7)
Number of COVID-19 cases ever associated with a facility (%)	168 (1.9)	219 (2.5)
Number of COVID-19 deaths ever associated with a facility (%)	8 (6.5)	30 (24.4)

*Long term care residents are at high risk for infection, serious illness, and death from COVID-19. Data in the above table will be updated weekly. \* Cases in a staff member or resident. \*\*Ongoing cases include any identified within the last 7 days.*

**Location (at time of testing) of individuals diagnosed but not residing or counted in Montana:**

County	Number of Cases (percent of total)
Beaverhead	3 (1%)
Big Horn	1 (<1%)
Carbon	3 (1%)
Cascade	20 (9%)
Custer	4 (2%)
Dawson	2 (1%)
Deer Lodge	1 (<1%)
Fallon	1 (<1%)
Fergus	2 (1%)
Flathead	46 (19%)
Gallatin	47 (20%)
Glacier	1 (<1%)
Granite	1 (<1%)
Lake	10 (4%)
Lewis and Clark	5 (2%)
Lincoln	3 (1%)
Madison	25 (11%)
Meagher	1 (<1%)
Missoula	13 (5%)
Park	8 (3%)
Powell	1 (<1%)
Ravalli	8 (3%)
Silver Bow	5 (2%)
Stillwater	2 (1%)
Sweet Grass	3 (1%)
Toole	2 (1%)
Yellowstone	20 (9%)
Total	238

*Cases reported in the tables above include 13 residents of other states who were tested, isolated and/or hospitalized in Montana during the early phases of the pandemic. As COVID-19 is now widespread across the United States, data no longer include out-of-state residents who test positive in Montana in order to align with Council of State and Territorial Epidemiologists guidelines that classify cases by the individual's usual state of residence. This is standard practice for all communicable diseases to ensure accurate case reporting for Montana and the US. Additional individuals were diagnosed in Montana but are not included due to residency and/or the transient nature of their visit to the state: data for these individuals are reflected in the table immediately above.*