

Coronavirus Disease 2019 (COVID-19)

[Analysis of COVID-19 Cases in Montana as of 9/4/2020](#)

[Archive of COVID-19 Montana Analyses](#)



Demographic Information for Confirmed Cases

COVID-19 Cases in Montana

Total Number of Cases 9246
- Number of Deaths 140

** Tables and charts are updated by 10 am every morning.*



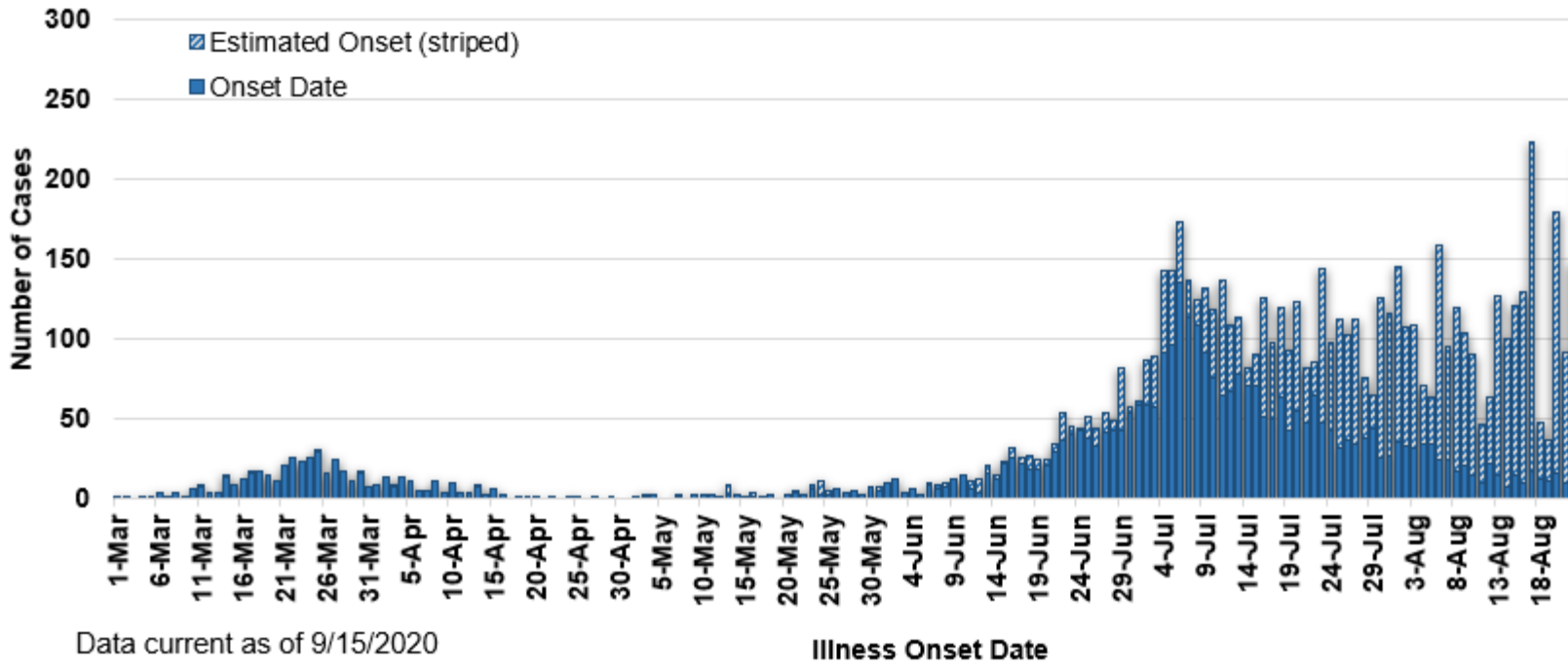
[Click Here: Montana COVID-19 Case Map](#)

County of Residence	Number of Cases	Number of Deaths	Community Transmission*
Beaverhead	75	1	Yes
Big Horn	791	21	Yes
Blaine	15		
Broadwater	17		
Carbon	102		
Cascade	463	5	Yes
Chouteau	15		
Custer	81	2	
Daniels	3		

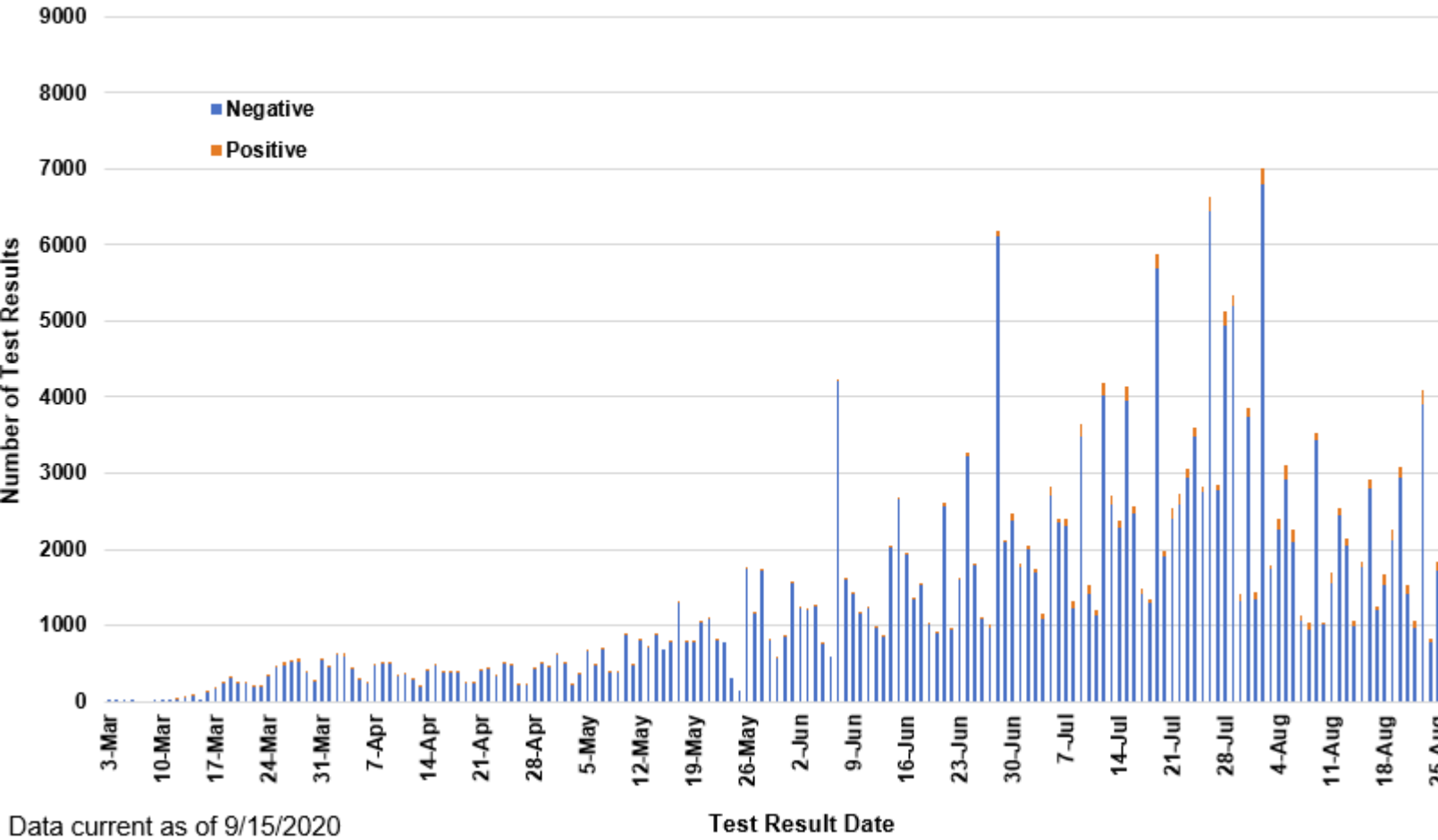
County of Residence	Number of Cases	Number of Deaths	Community Transmission*
Dawson	60	1	
Deer Lodge	87		
Fallon	4		
Fergus	53	1	
Flathead	736	13	Yes
Gallatin	1160	3	Yes
Garfield	16		
Glacier	168	1	Yes
Golden Valley	3		
Granite	22		
Hill	117	3	
Jefferson	47		
Judith Basin	6		
Lake	243	1	
Lewis and Clark	211	3	Yes
Liberty	15		
Lincoln	105	3	
Madison	97	1	Yes
McCone	19		
Meagher	10	1	
Mineral	2		
Missoula	502	3	Yes
Musselshell	28	1	
Park	80		
Phillips	116		
Pondera	18		
Powder River	2		
Powell	10		
Prairie	1		
Ravalli	117	2	Yes
Richland	70	2	
Roosevelt	87	1	
Rosebud	466	7	Yes
Sanders	42	1	
Sheridan	7		
Silver Bow	182		Yes
Stillwater	49	2	
Sweet Grass	37	1	
Teton	20		
Toole	64	6	
Treasure	3		
Valley	52		
Wheatland	6		
Wibaux	8		
Yellowstone	2536	54	Yes
Total	9246	140	

* Community transmission - a community has identified cases who are unable to be linked with other known cases or travel. This status has been determined after consultation between state and local health departments.

COVID-19 Cases in Montana by Date of Illness Onset, 2020 [N=9,246]



SARS-Cov-2 PCR Testing at Montana Public Health Laboratory and Reference Laboratories, Montana 2020 [n=288,929]



View your county's test positivity rate at the [Center for Medicare and Medicaid Services' \(CMS\) webpage](#).

Hospitalization Status	Number of Cases (percent of total)
Ever hospitalized	539 (6%)
Not Hospitalized	8707 (94%)
Total	9246

Age Group	Number of Cases (percent of total)
0-9 years	373 (4%)
10-19 years	932 (10%)
20-29 years	2096 (23%)
30-39 years	1582(17%)
40-49 years	1243 (13%)
50-59 years	1157 (13%)
60-69 years	9967 (10%)
70-79 years	569 (6%)
80-89 years	259 (3%)
90-99 years	65 (<1%)
100+	3 (<1%)
Total	9246
Sex	Number of Cases (percent of total)
Female	4608 (50%)
Male	4638 (50%)
Total	9246

Race and Ethnicity	Number of Cases (percent of total)
White	4882 (53%)
American Indian, Alaska Native, Native Hawaiian, and Pacific Islander	1549 (17%)
Asian	33 (<1%)
Black or African American	58 (<1%)
Other Race	93 (1%)
Undetermined/Under investigation	2600 (28%)
Total	9246
Among those with ethnicity specified:	
Hispanic/Latino	348 (3%)
Not Hispanic/Latino	6056 (65%)
Undetermined/Under investigation	2842 (31%)
Total	9246

Current Status of Cases	Number of Cases (percent of total)
Hospitalized	109 (1.2%)
Deceased	140 (1.5%)
Recovering	1847 (20%)
Recovered and released from isolation	7150 (77%)
Total number of cases	9246

Summary of Long Term Care Facility (LTCF) and Assisted Living Facility (ALF) COVID-19 cases and deaths:

	LTCF	ALF
Number of facilities in Montana by type	73	211
Number of facilities that have reported COVID-19 cases* (%)	28 (38.4)	31 (14.7)
Number of facilities with ongoing COVID-19 cases** (%)	12 (16.4)	12 (5.7)
Number of COVID-19 cases ever associated with a facility (%)	168 (1.9)	219 (2.5)
Number of COVID-19 deaths ever associated with a facility (%)	8 (6.5)	30 (24.4)

*Long term care residents are at high risk for infection, serious illness, and death from COVID-19. Data in the above table will be updated weekly. * Cases in a staff member or resident. **Ongoing cases include any identified within the last 7 days.*

Location (at time of testing) of individuals diagnosed but not residing or counted in Montana:

County	Number of Cases (percent of total)
Beaverhead	3 (1%)
Big Horn	1 (<1%)
Carbon	3 (1%)
Cascade	20 (9%)
Custer	4 (2%)
Dawson	2 (1%)
Deer Lodge	1 (<1%)
Fallon	1 (<1%)
Fergus	2 (1%)
Flathead	46 (19%)
Gallatin	48 (20%)
Glacier	1 (<1%)
Granite	1 (<1%)
Lake	10 (4%)
Lewis and Clark	5 (2%)
Lincoln	3 (1%)
Madison	25 (11%)
Meagher	1 (<1%)
Missoula	14 (5%)
Park	10 (3%)
Powell	1 (<1%)
Ravalli	8 (3%)
Silver Bow	5 (2%)
Stillwater	2 (1%)
Sweet Grass	3 (1%)
Toole	2 (1%)
Yellowstone	20 (9%)
Total	242

Cases reported in the tables above include 13 residents of other states who were tested, isolated and/or hospitalized in Montana during the early phases of the pandemic. As COVID-19 is now widespread across the United States, data no longer include out-of-state residents who test positive in Montana in order to align with Council of State and Territorial Epidemiologists guidelines that classify cases by the individual's usual state of residence. This is standard practice for all communicable diseases to ensure accurate case reporting for Montana and the US. Additional individuals were diagnosed in Montana but are not included due to residency and/or the transient nature of their visit to the state: data for these individuals are reflected in the table immediately above.