

Coronavirus Disease 2019 (COVID-19)

[Analysis of COVID-19 Cases in Montana as of 9/4/2020](#)

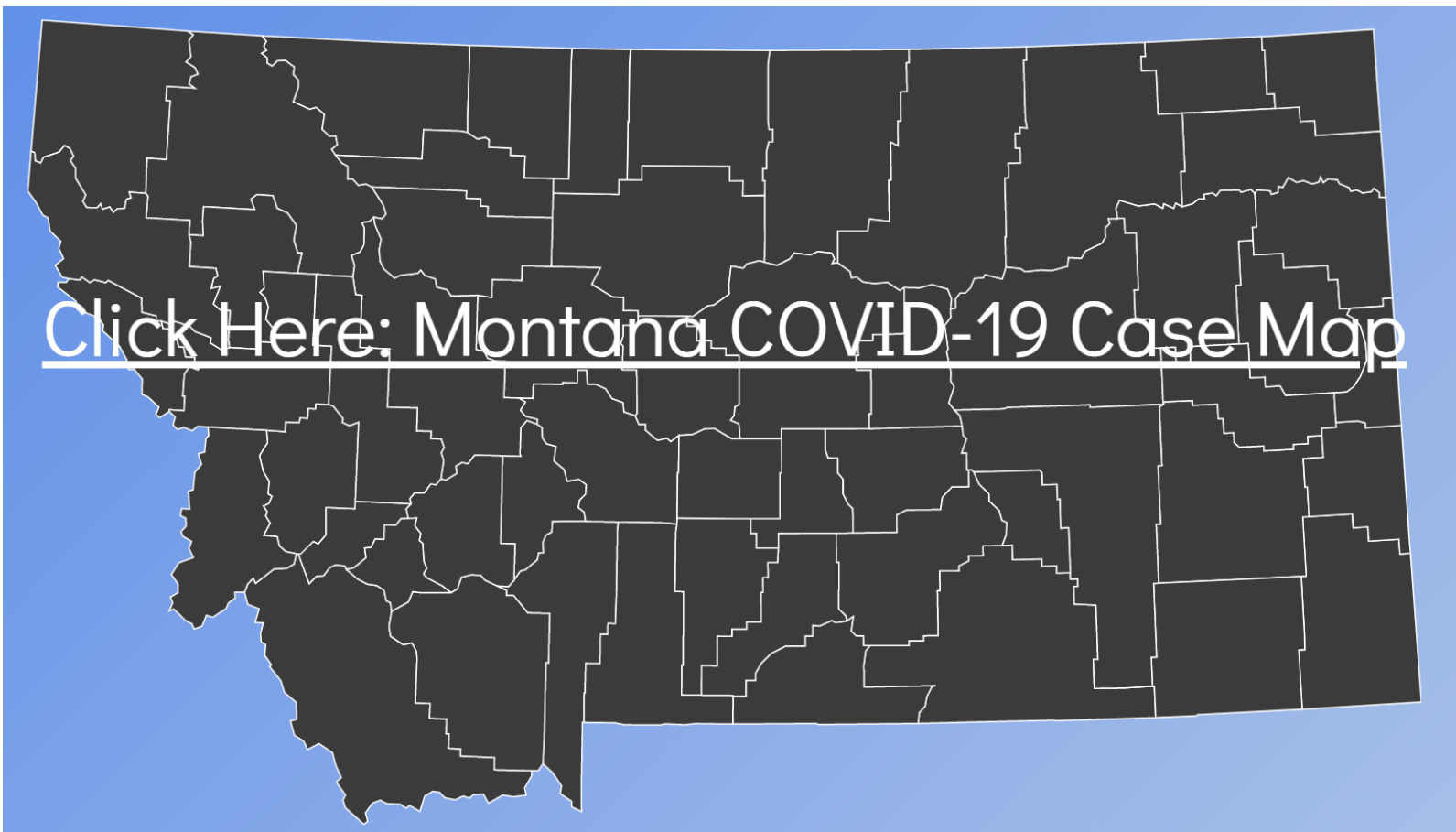
[Archive of COVID-19 Montana Analyses](#)



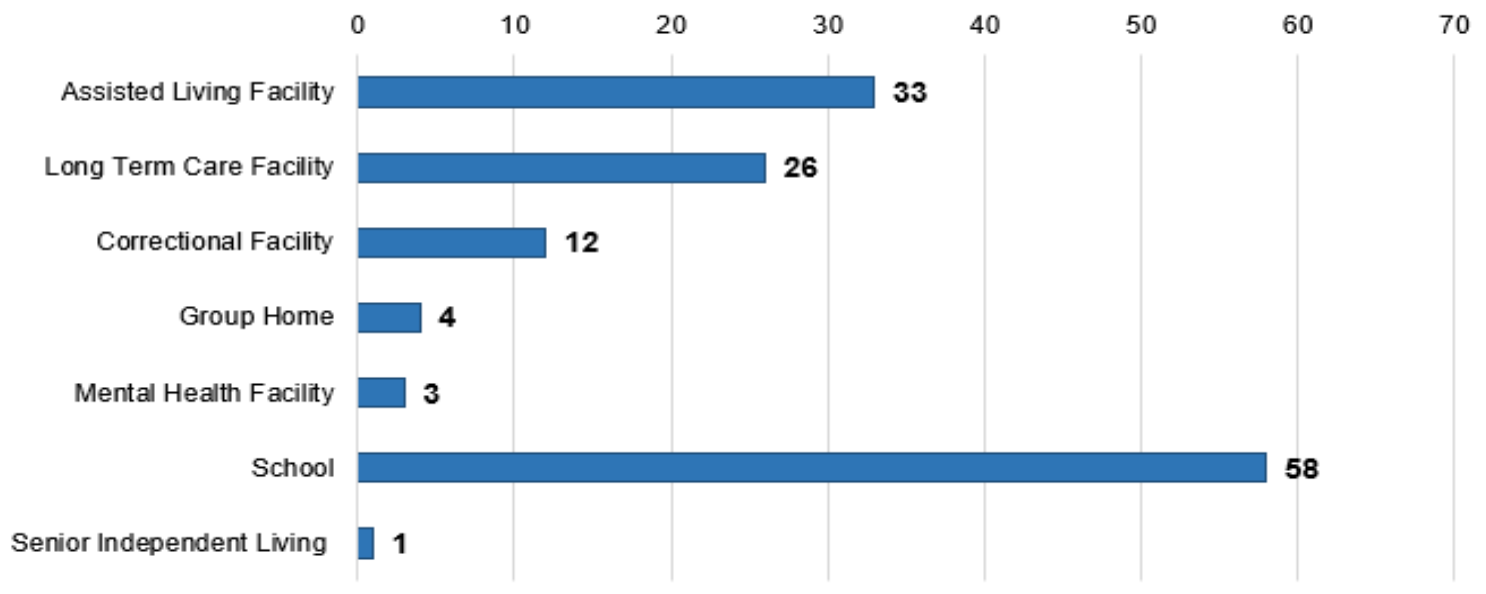
Demographic Information for Confirmed Cases

COVID-19 Cases in Montana	
Total Number of Cases	9431
- Number of Deaths	141

** Tables and charts are updated by 10 am every morning.*



Number of congregate settings with COVID-19 cases by type in Montana (n=137)



[Additional information on COVID-19 in Montana Long Term Care and Assisted Living Facilities](#)

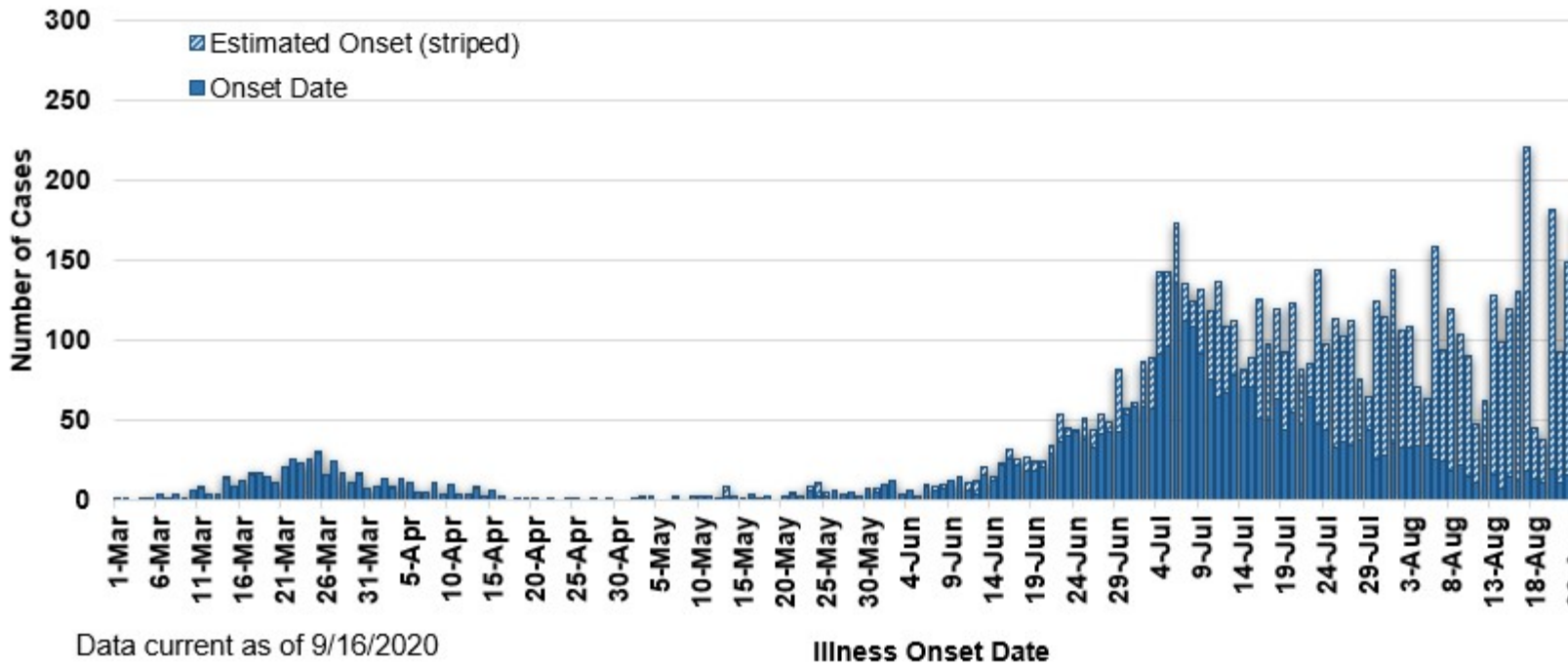
[Additional information on COVID-19 in Montana schools](#)

County of Residence	Number of Cases	Number of Deaths	Community Transmission*
Beaverhead	75	1	Yes
Big Horn	800	21	Yes
Blaine	15		
Broadwater	17		
Carbon	104		
Cascade	481	5	Yes
Chouteau	18		
Custer	85	2	
Daniels	3		
Dawson	64	1	
Deer Lodge	87		
Fallon	4		
Fergus	53	1	
Flathead	734	13	Yes
Gallatin	1166	4	Yes
Garfield	16		
Glacier	169	1	Yes
Golden Valley	3		
Granite	22		
Hill	119	3	
Jefferson	48		
Judith Basin	6		
Lake	245	1	
Lewis and Clark	215	3	Yes
Liberty	15		
Lincoln	105	3	
Madison	97	1	Yes
McCone	19		
Meagher	10	1	
Mineral	2		
Missoula	505	3	Yes

County of Residence	Number of Cases	Number of Deaths	Community Transmission*
Musselshell	28	1	
Park	84		
Phillips	116		
Pondera	18		
Powder River	2		
Powell	10		
Prairie	1		
Ravalli	119	2	Yes
Richland	71	2	
Roosevelt	87	1	
Rosebud	505	7	Yes
Sanders	42	1	
Sheridan	7		
Silver Bow	183		Yes
Stillwater	49	2	
Sweet Grass	37	1	
Teton	20		
Toole	64	6	
Treasure	3		
Valley	52		
Wheatland	6		
Wibaux	8		
Yellowstone	2617	54	Yes
Total	9431	141	

* Community transmission - a community has identified cases who are unable to be linked with other known cases or travel. This status has been determined after consultation between state and local health departments.

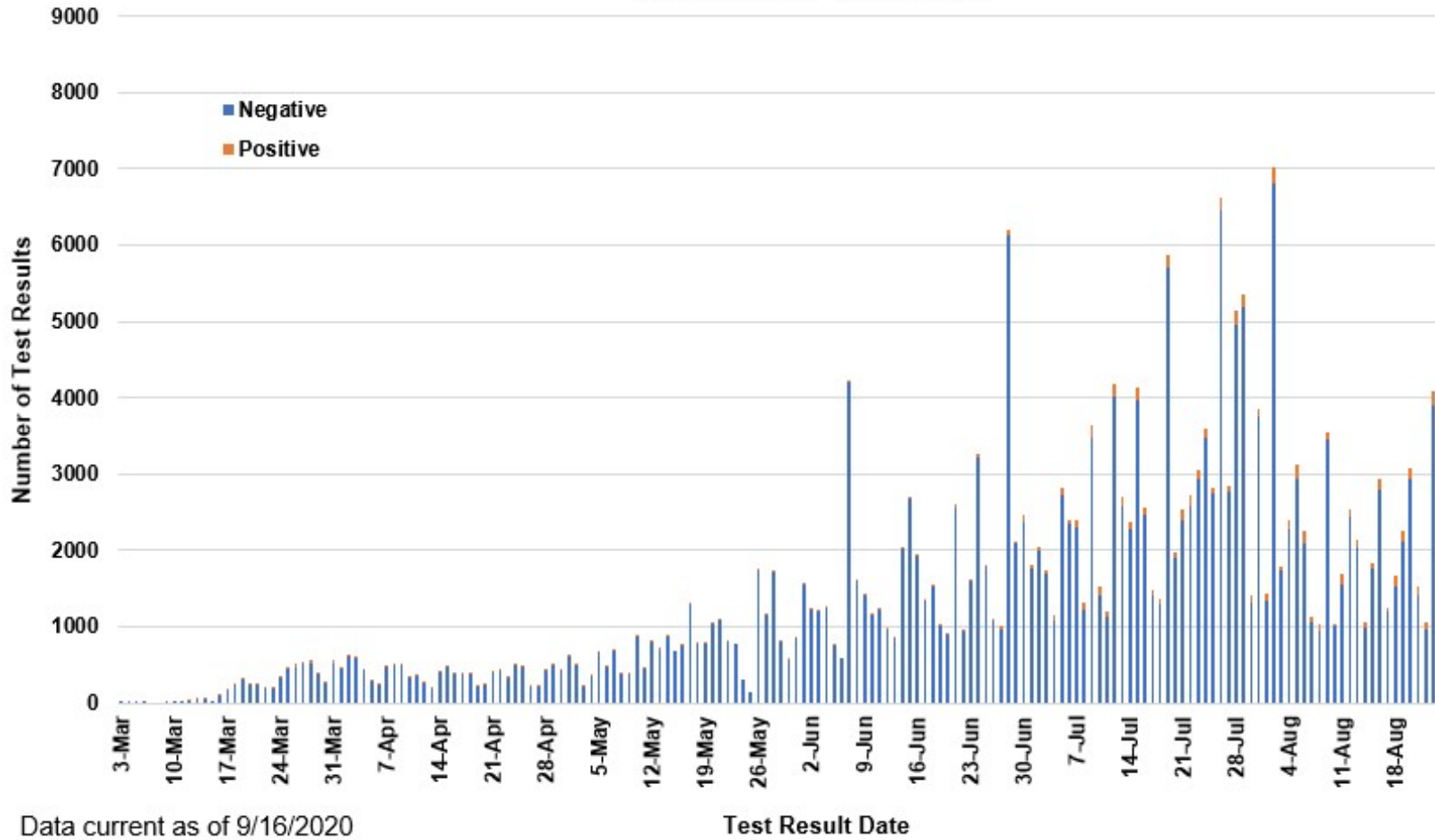
COVID-19 Cases in Montana by Date of Illness Onset, 2020 [N=9,431]



Data current as of 9/16/2020

Illness Onset Date

SARS-Cov-2 PCR Testing at Montana Public Health Laboratory and Reference Laboratories, Montana 2020 [n=292,401]



View your county's test positivity rate at the [Center for Medicare and Medicaid Services' \(CMS\) webpage](#).

Hospitalization Status	Number of Cases (percent of total)
Ever hospitalized	543 (6%)
Not Hospitalized	8888 (94%)
Total	9431

Age Group	Number of Cases (percent of total)
0-9 years	393 (4%)
10-19 years	959 (10%)
20-29 years	2129 (23%)
30-39 years	1609 (17%)
40-49 years	1259 (13%)
50-59 years	1181 (13%)
60-69 years	987 (10%)
70-79 years	582 (6%)
80-89 years	263 (3%)
90-99 years	66 (<1%)
100+	3 (<1%)
Total	9431

Sex	Number of Cases (percent of total)
Female	4701 (50%)
Male	4730 (50%)
Total	9431

Race and Ethnicity	Number of Cases (percent of total)
White	5086 (54%)
American Indian, Alaska Native, Native Hawaiian, and Pacific Islander	1622 (17%)
Asian	34 (<1%)
Black or African American	64 (<1%)
Other Race	96 (1%)
Undetermined/Under investigation	2529 (27%)
Total	9431
Among those with ethnicity specified:	
Hispanic/Latino	359 (4%)
Not Hispanic/Latino	6289 (67%)
Undetermined/Under investigation	2783 (30%)
Total	9431

Current Status of Cases	Number of Cases (percent of total)
Hospitalized	106 (1.1%)
Deceased	141 (1.5%)
Recovering	1998 (21%)
Recovered and released from isolation	7186 (76%)
Total number of cases	9431

Location (at time of testing) of individuals diagnosed but not residing or counted in Montana:

County	Number of Cases (percent of total)
Beaverhead	3 (1%)
Big Horn	1 (<1%)
Carbon	3 (1%)
Cascade	20 (9%)
Custer	4 (2%)
Dawson	2 (1%)
Deer Lodge	1 (<1%)
Fallon	1 (<1%)
Fergus	2 (1%)
Flathead	46 (19%)
Gallatin	49 (20%)
Glacier	1 (<1%)
Granite	1 (<1%)
Lake	10 (4%)
Lewis and Clark	5 (2%)
Lincoln	3 (1%)
Madison	25 (11%)
Meagher	1 (<1%)
Missoula	14 (5%)
Park	10 (3%)
Powell	1 (<1%)
Ravalli	8 (3%)
Silver Bow	5 (2%)
Stillwater	2 (1%)
Sweet Grass	3 (1%)
Toole	2 (1%)
Yellowstone	20 (9%)
Total	243

Cases reported in the tables above include 13 residents of other states who were tested, isolated and/or hospitalized in Montana during the early phases of the pandemic. As COVID-19 is now widespread across the United States, data no longer include out-of-state residents who test positive in Montana in order to align with Council of State and Territorial Epidemiologists guidelines that classify cases by the individual's usual state of residence. This is standard practice for all communicable diseases to ensure accurate case reporting for Montana and the US. Additional individuals were diagnosed in

Montana but are not included due to residency and/or the transient nature of their visit to the state: data for these individuals are reflected in the table immediately above.