

Coronavirus Disease 2019 (COVID-19)

[Analysis of COVID-19 Cases in Montana as of 9/4/2020](#)

[Archive of COVID-19 Montana Analyses](#)



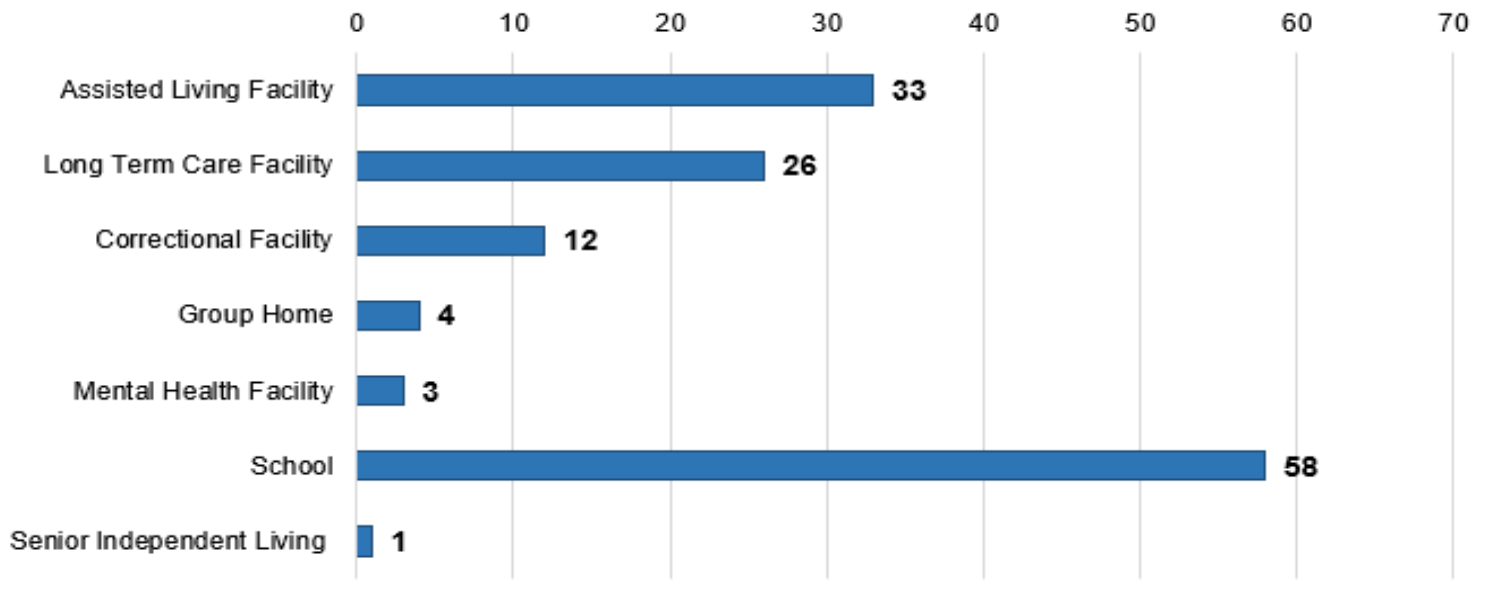
Demographic Information for Confirmed Cases

COVID-19 Cases in Montana	
Total Number of Cases	9647
- Number of Deaths	143

** Tables and charts are updated by 10 am every morning.*



Number of congregate settings with COVID-19 cases by type in Montana (n=137)



[Additional information on COVID-19 in Montana Long Term Care and Assisted Living Facilities](#)

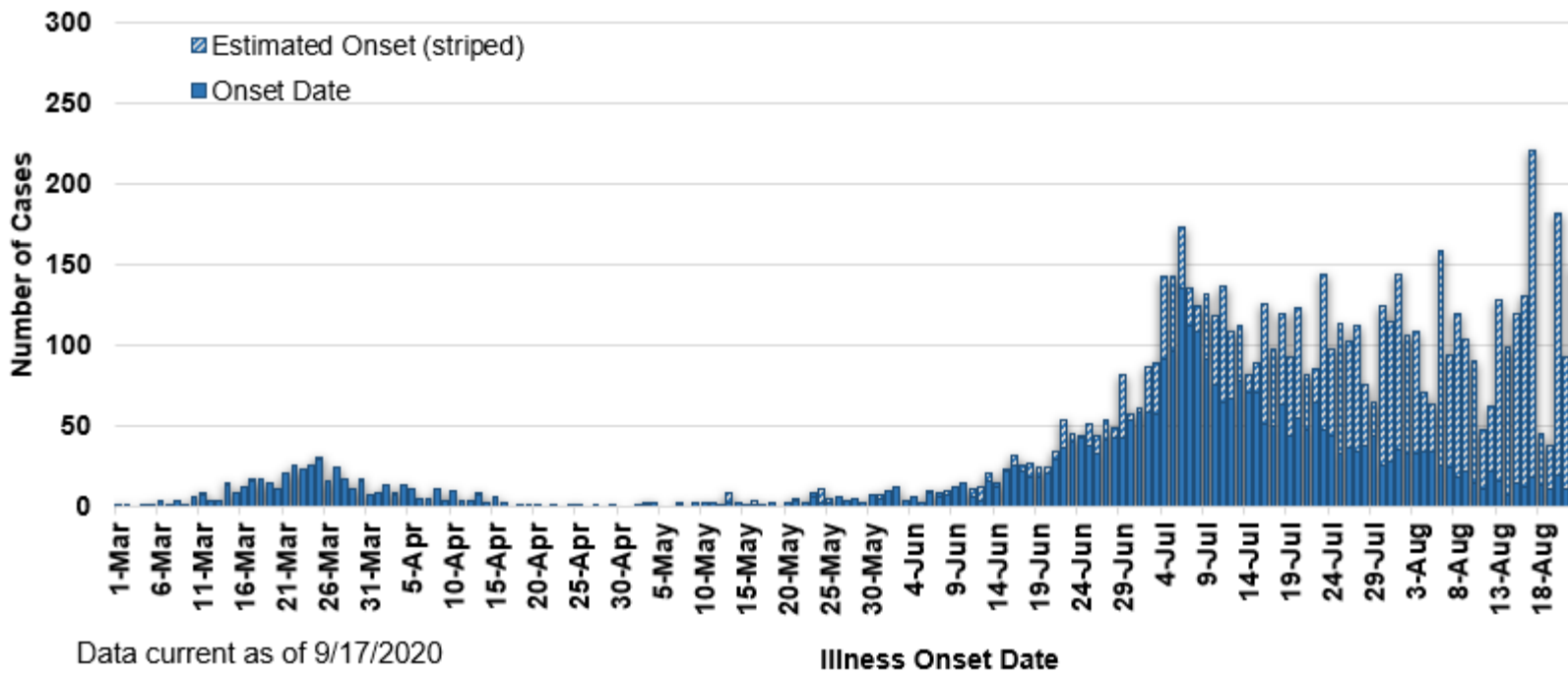
[Additional information on COVID-19 in Montana schools](#)

County of Residence	Number of Cases	Number of Deaths	Community Transmission*
Beaverhead	76	1	Yes
Big Horn	814	21	Yes
Blaine	15		
Broadwater	17		
Carbon	106		
Cascade	483	5	Yes
Chouteau	18		
Custer	91	2	
Daniels	3		
Dawson	67	1	
Deer Lodge	88		
Fallon	4		
Fergus	53	1	
Flathead	740	13	Yes
Gallatin	1179	4	Yes
Garfield	16		
Glacier	171	1	Yes
Golden Valley	3		
Granite	22		
Hill	124	3	
Jefferson	48		
Judith Basin	6		
Lake	252	1	
Lewis and Clark	216	3	Yes
Liberty	15		
Lincoln	105	3	
Madison	97	1	Yes
McCone	19		
Meagher	23	1	
Mineral	2		
Missoula	514	3	Yes

County of Residence	Number of Cases	Number of Deaths	Community Transmission*
Musselshell	31	1	
Park	86		
Phillips	116		
Pondera	20		
Powder River	2		
Powell	10		
Prairie	1		
Ravalli	120	2	Yes
Richland	71	2	
Roosevelt	101	1	
Rosebud	538	7	Yes
Sanders	43	1	
Sheridan	7		
Silver Bow	194		Yes
Stillwater	49	2	
Sweet Grass	37	1	
Teton	20		
Toole	66	6	
Treasure	3		
Valley	52		
Wheatland	8		
Wibaux	8		
Yellowstone	2677	56	Yes
Total	9647	143	

* Community transmission - a community has identified cases who are unable to be linked with other known cases or travel. This status has been determined after consultation between state and local health departments.

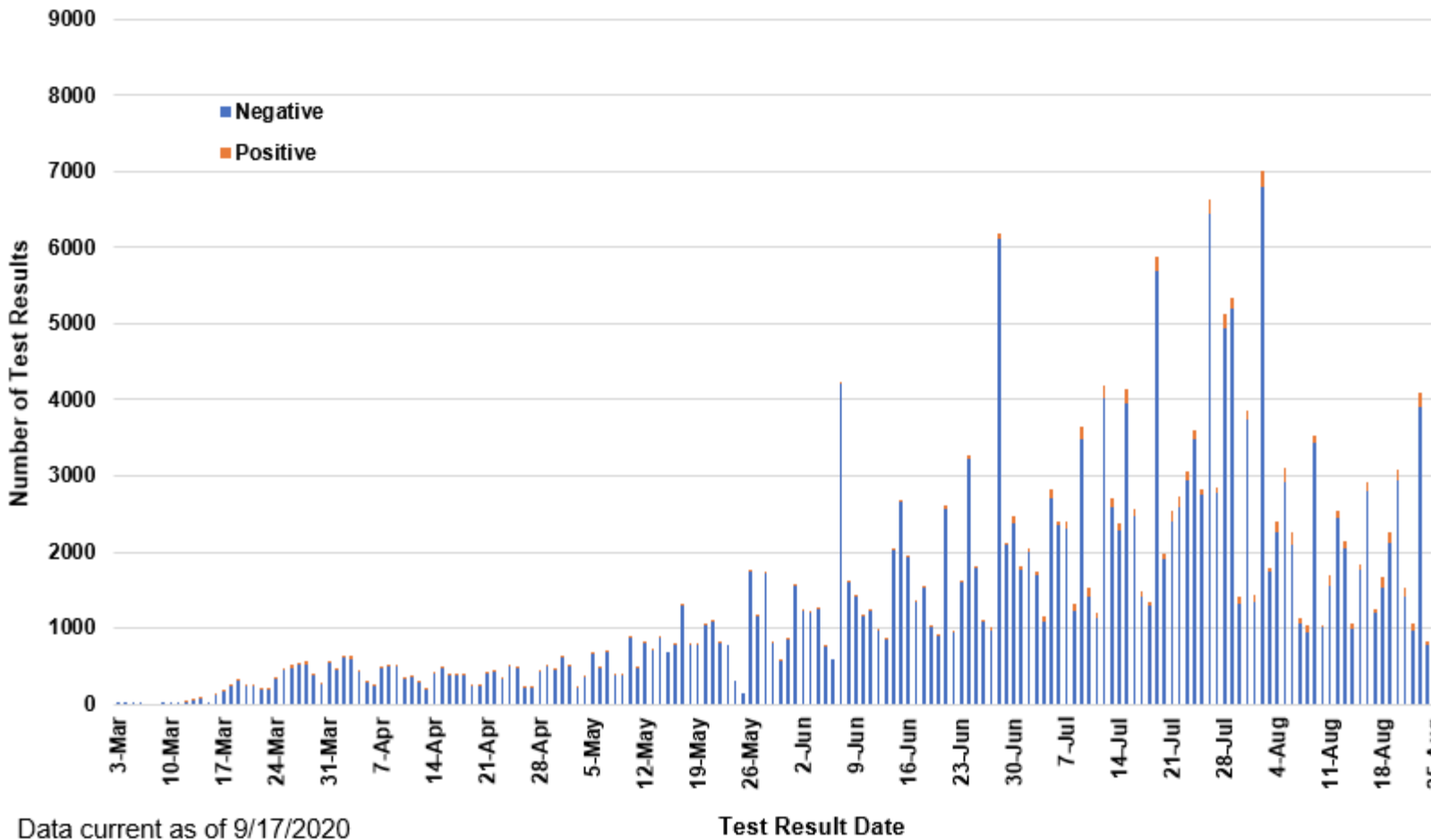
COVID-19 Cases in Montana by Date of Illness Onset, 2020 [N=9,647]



Data current as of 9/17/2020

Illness Onset Date

SARS-Cov-2 PCR Testing at Montana Public Health Laboratory and Reference Laboratories, Montana 2020 [n=295,299]



View your county's test positivity rate at the [Center for Medicare and Medicaid Services' \(CMS\) webpage](#).

Hospitalization Status	Number of Cases (percent of total)
Ever hospitalized	549 (6%)
Not Hospitalized	9098 (94%)
Total	9647

Age Group	Number of Cases (percent of total)
0-9 years	409 (4%)
10-19 years	992 (10%)
20-29 years	2164 (22%)
30-39 years	1649 (17%)
40-49 years	1283 (13%)
50-59 years	1202 (13%)
60-69 years	1019 (10%)
70-79 years	590 (6%)
80-89 years	269 (3%)
90-99 years	67 (<1%)
100+	3 (<1%)
Total	9647

Sex	Number of Cases (percent of total)
Female	4812 (50%)
Male	4835 (50%)
Total	9647

Race and Ethnicity	Number of Cases (percent of total)
White	5153 (54%)
American Indian, Alaska Native, Native Hawaiian, and Pacific Islander	1677 (17%)
Asian	34 (<1%)
Black or African American	64 (<1%)
Other Race	96 (1%)
Undetermined/Under investigation	2623 (27%)
Total	9647
Among those with ethnicity specified:	
Hispanic/Latino	360 (4%)
Not Hispanic/Latino	6395 (67%)
Undetermined/Under investigation	2892 (30%)
Total	9647

Current Status of Cases	Number of Cases (percent of total)
Hospitalized	107 (1.1%)
Deceased	143 (1.5%)
Recovering	1996 (21%)
Recovered and released from isolation	7401 (77%)
Total number of cases	9647

Location (at time of testing) of individuals diagnosed but not residing or counted in Montana:

County	Number of Cases (percent of total)
Beaverhead	3 (1%)
Big Horn	1 (<1%)
Carbon	3 (1%)
Cascade	20 (9%)
Custer	4 (2%)
Dawson	2 (1%)
Deer Lodge	1 (<1%)
Fallon	1 (<1%)
Fergus	2 (1%)
Flathead	46 (19%)
Gallatin	49 (20%)
Glacier	1 (<1%)
Granite	1 (<1%)
Lake	10 (4%)
Lewis and Clark	5 (2%)
Lincoln	3 (1%)
Madison	25 (11%)
Meagher	1 (<1%)
Missoula	14 (5%)
Park	10 (3%)
Powell	1 (<1%)
Ravalli	8 (3%)
Silver Bow	5 (2%)
Stillwater	2 (1%)
Sweet Grass	3 (1%)
Toole	2 (1%)
Yellowstone	20 (9%)
Total	243

Cases reported in the tables above include 13 residents of other states who were tested, isolated and/or hospitalized in Montana during the early phases of the pandemic. As COVID-19 is now widespread across the United States, data no longer include out-of-state residents who test positive in Montana in order to align with Council of State and Territorial Epidemiologists guidelines that classify cases by the individual's usual state of residence. This is standard practice for all communicable diseases to ensure accurate case reporting for Montana and the US. Additional individuals were diagnosed in

Montana but are not included due to residency and/or the transient nature of their visit to the state: data for these individuals are reflected in the table immediately above.